



# Toshiba Satellite P55t-A5116 Keyboard Replacement

Use this guide to remove the Toshiba Satellite P55t-A5116 Keyboard.

Written By: Brittany Castillo



# INTRODUCTION

Use this guide to remove the Toshiba Satellite P55t-A5116 Keyboard.



## TOOLS:

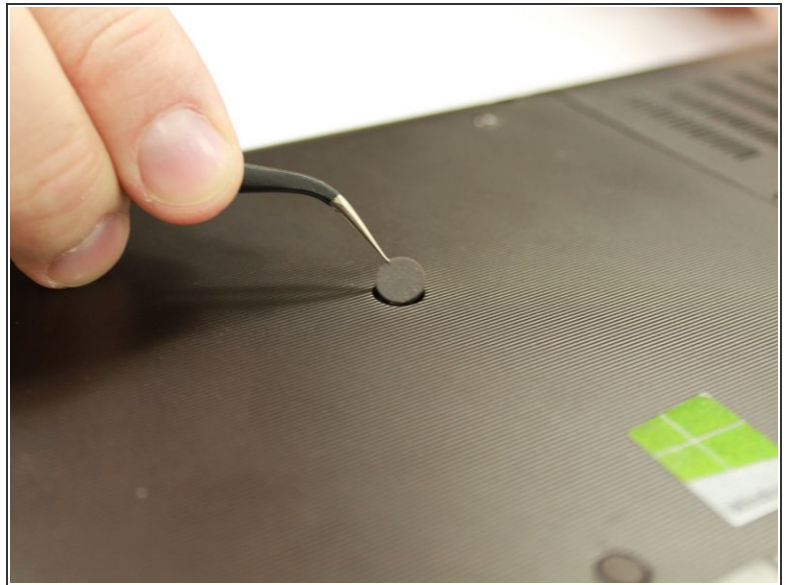
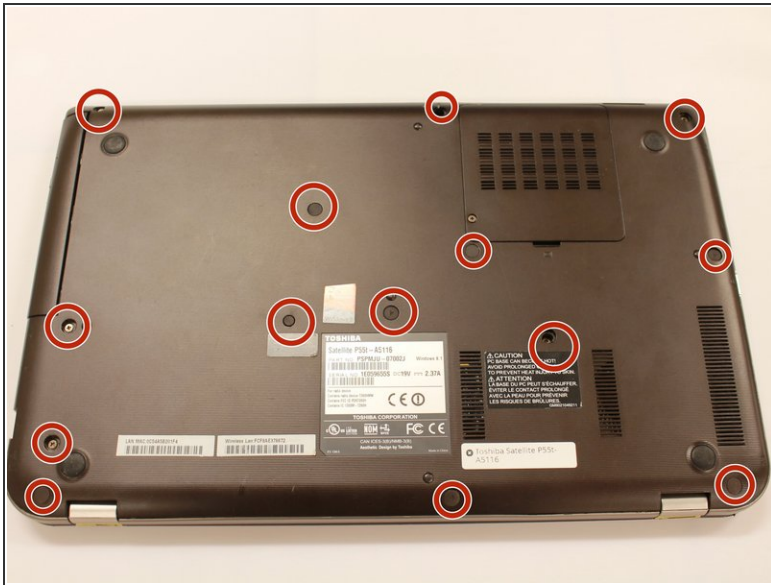
- [Tweezers](#) (1)
- [iFixit Opening Tools](#) (1)
- [Phillips #00 Screwdriver](#) (1)



## PARTS:

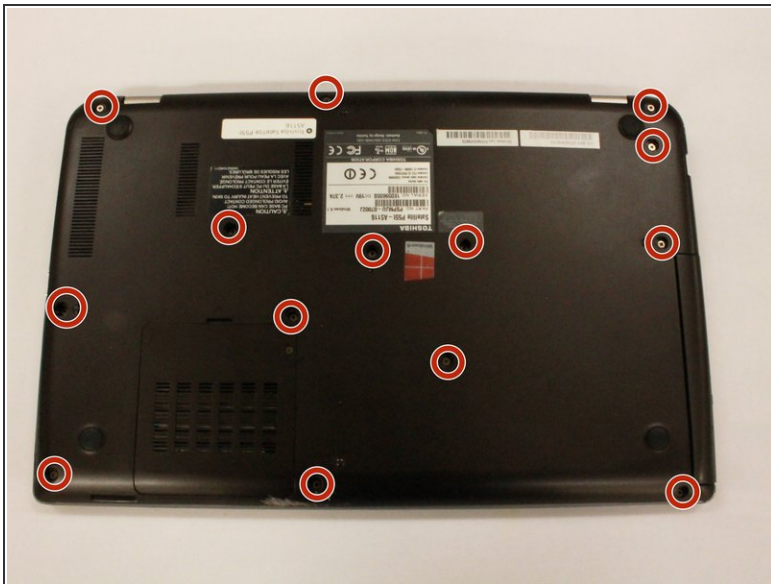
- [Toshiba P55T Series Keyboard](#) (1)
- Computer Part

## Step 1 — Back Casing



- Close laptop and turn it upside down
- Remove the 14 circular rubber covers with tweezers along with one smaller more cylindrical rubber cover.

## Step 2



- Using the #PH0 screw head, remove 14 (5.7 mm) screws from the back casing.

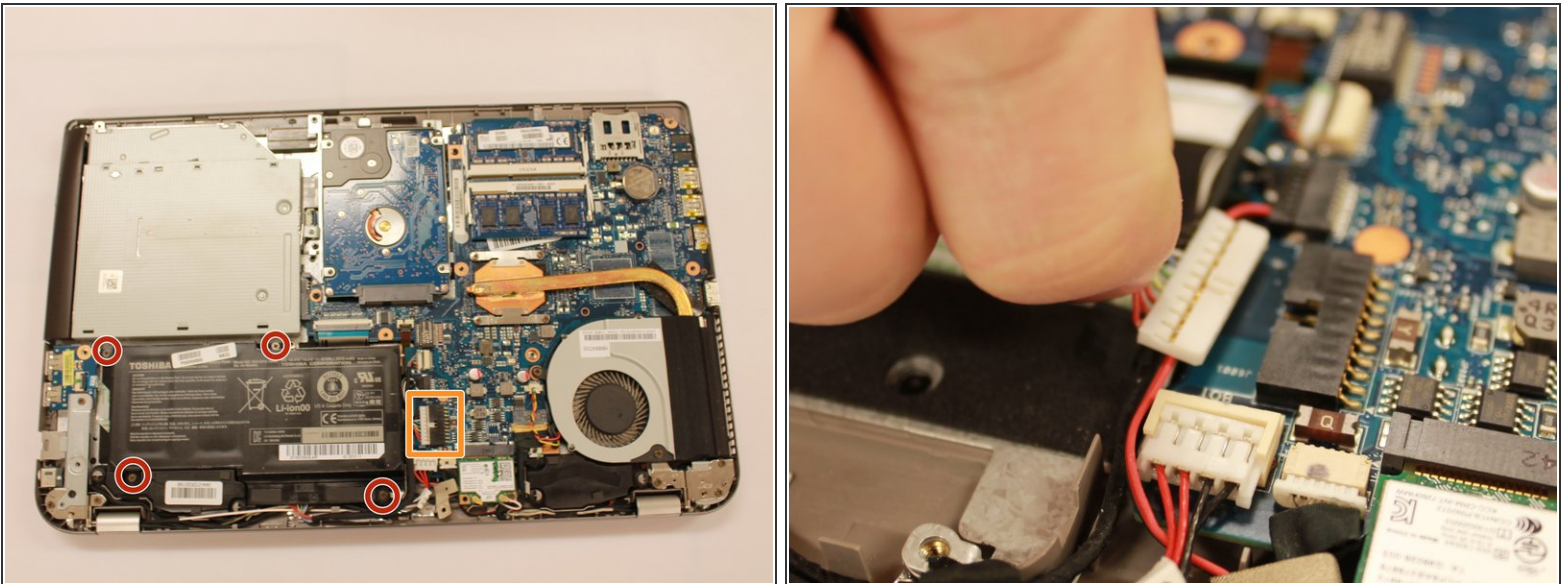


### Step 3



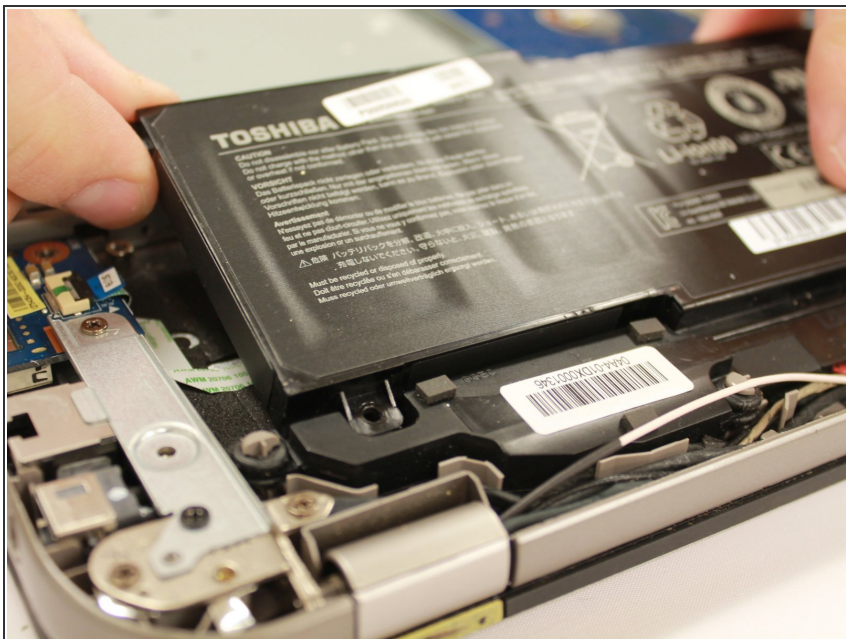
- Gently pry off the bottom case with the plastic opening tools.
- Find the seam between the back case and the rest of the laptop casing.

### Step 4 — Battery



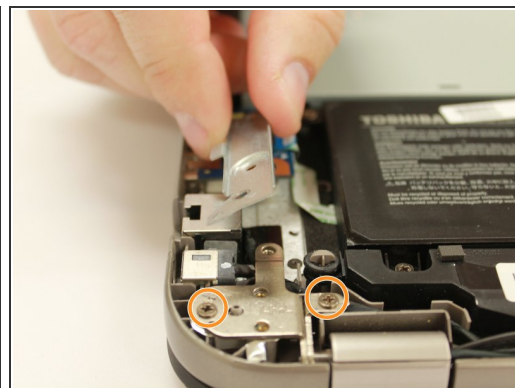
- Use the #PH0 screw head, remove 4 (5.7mm) screws.
- Unplug the battery's 10 pin connector and gently lift the battery out of the laptop.

## Step 5



- Gently remove battery from the laptop.

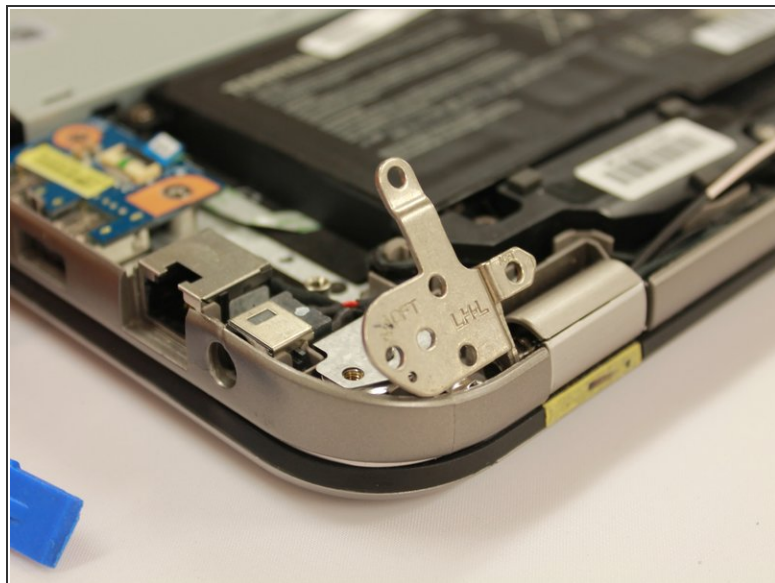
## Step 6 — Power Jack



- Using the #PH0 screw head, remove 2 (5.7 mm) screws.
- Remove metal plate.
- Using the #PH0 screw head remove 1 (5.7mm) screw and 1 (4.15mm) screw.

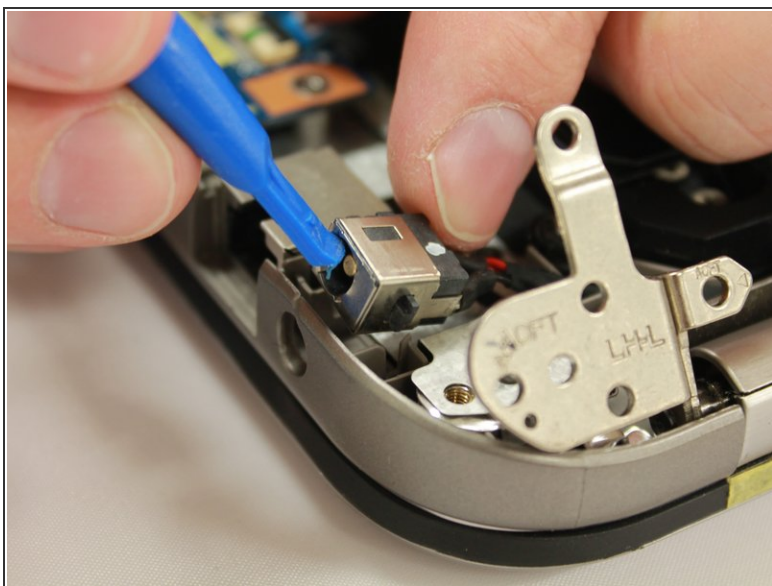


## Step 7



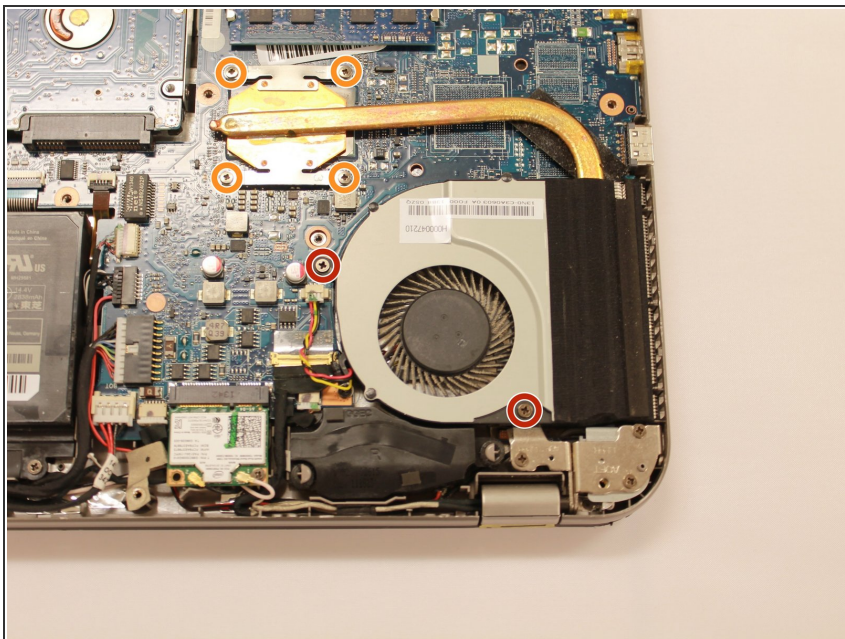
- Use the plastic opening tool to push the left hinge up.

## Step 8



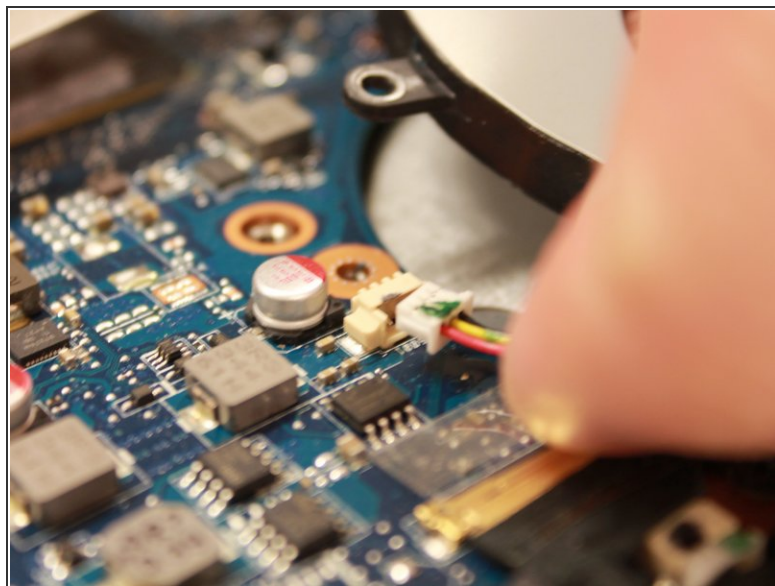
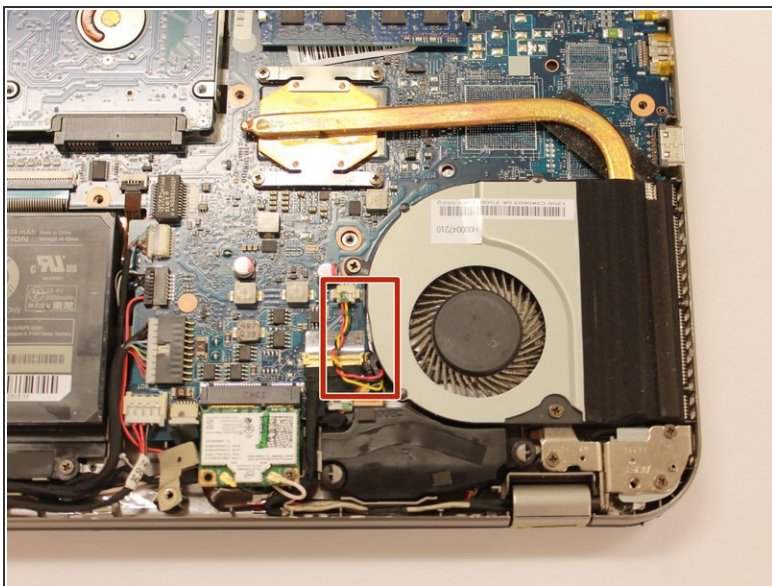
- Gently pull up the power jack. Follow the cord until you reach the connector.
- Unplug the 4 pin connector and remove from laptop

## Step 9 — Fan & CPU Cooler



- Using a PH0 screwdriver, remove 2 (5.7mm) screws.
- Using a PH0 screwdriver, remove 4 (3.68mm) screws.

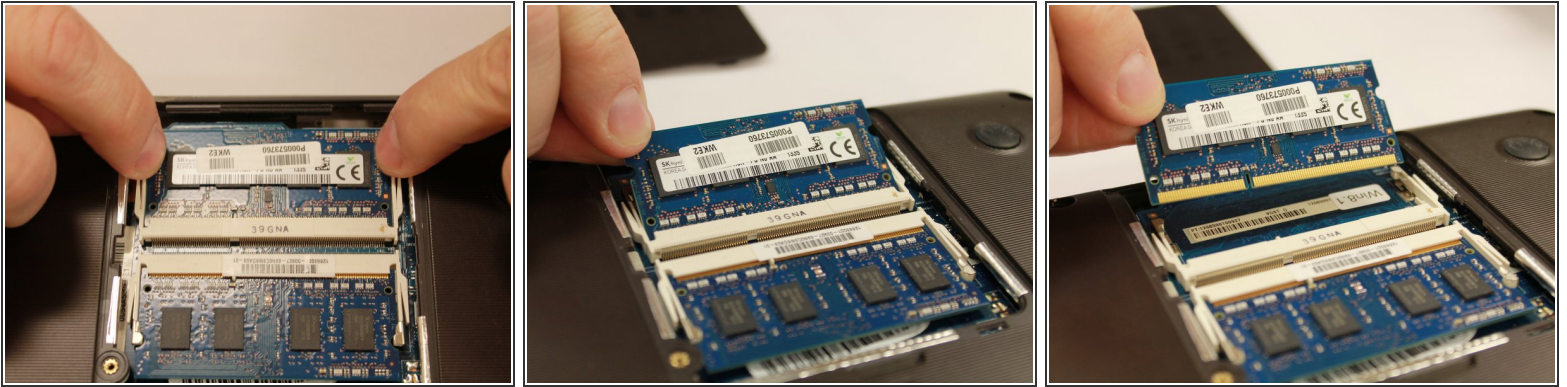
## Step 10



- Unplug the 3 pin connector
- Remove fan.



## Step 11 — Keyboard



- Pull out the latches on either side.
- The RAM should pop up.
- Remove the RAM.
- Repeat for the other side.

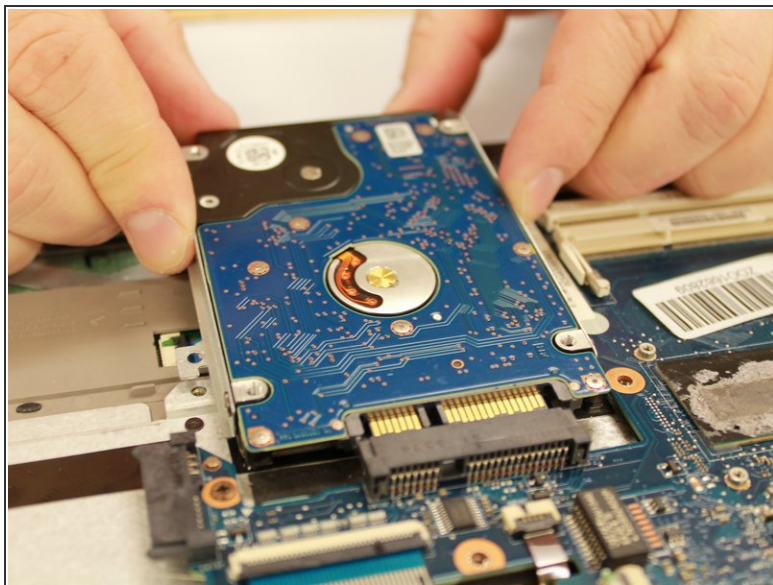
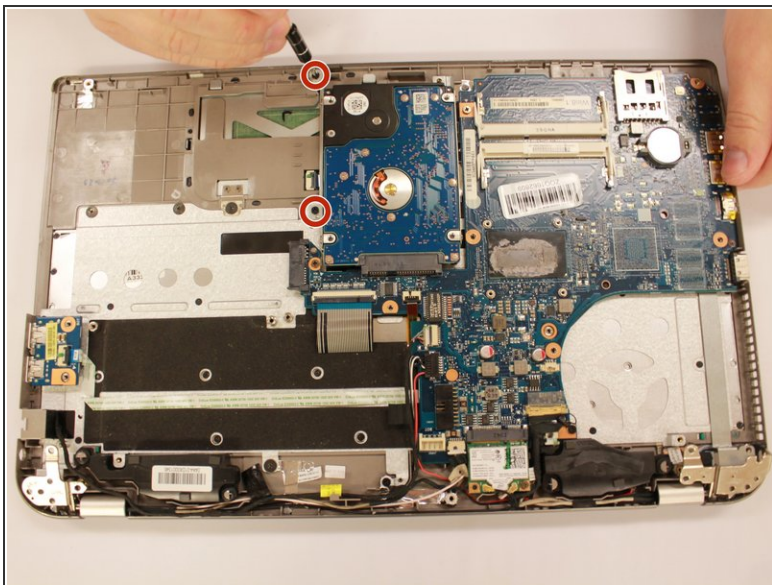
## Step 12



- Remove the DVD drive by pulling it sideways out of the laptop

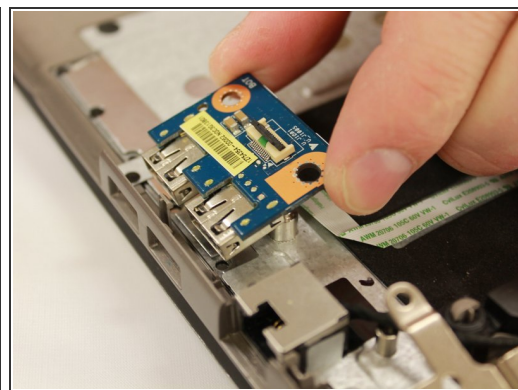
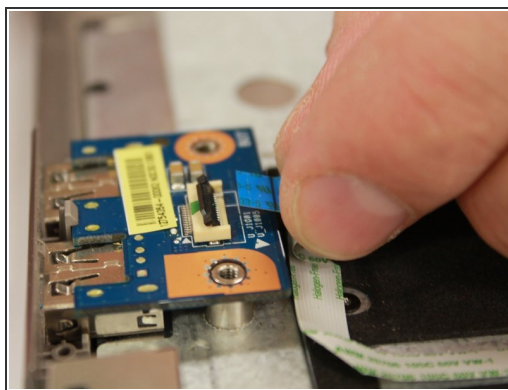
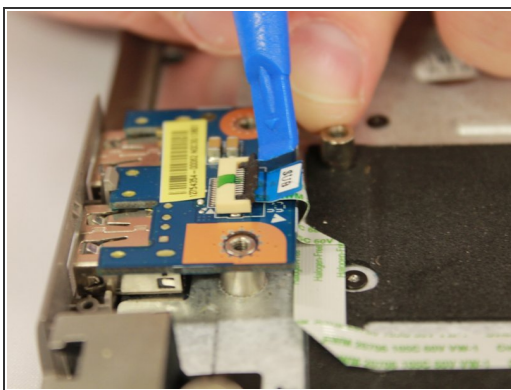


## Step 13



- Using the PH0 screw head, remove 2 (4.23mm) screws.
- Slide the hard drive out.

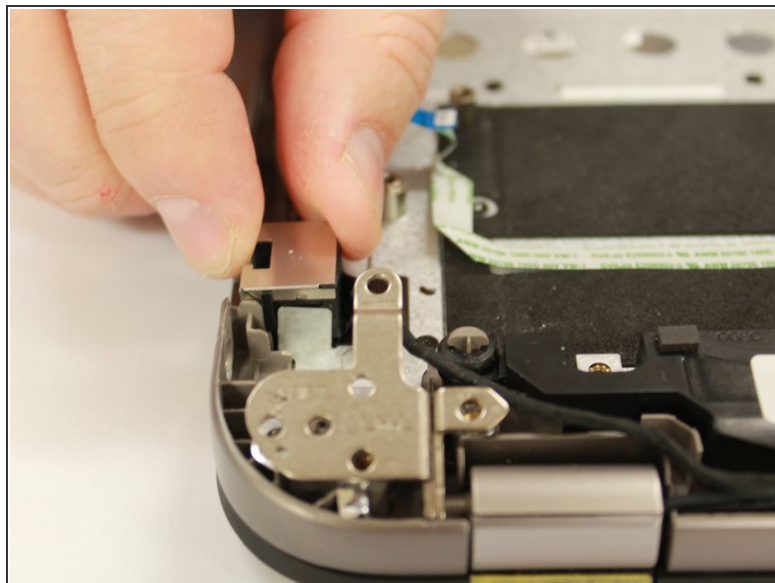
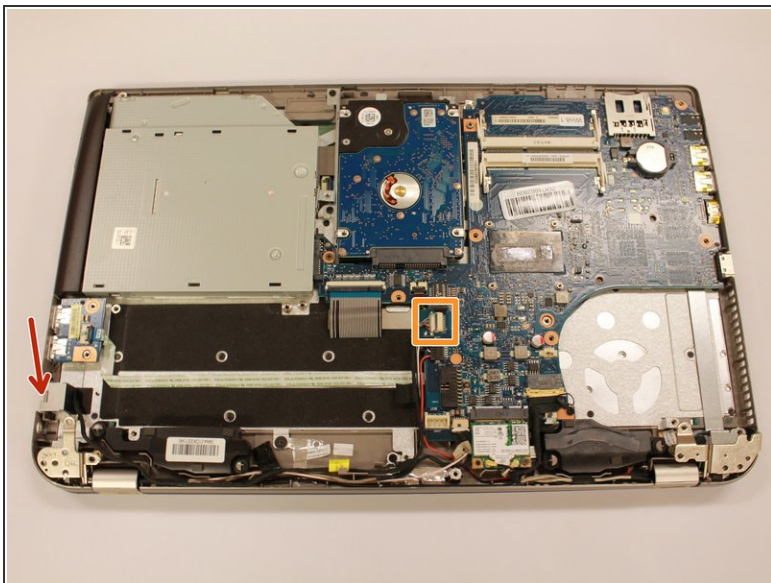
## Step 14



- Use a plastic opening tool to gently lift the black ribbon tab and unplug the ribbon cable.
- Remove the ribbon.
- Lightly pull up the USB Port from the metal supports and take out of the laptop.

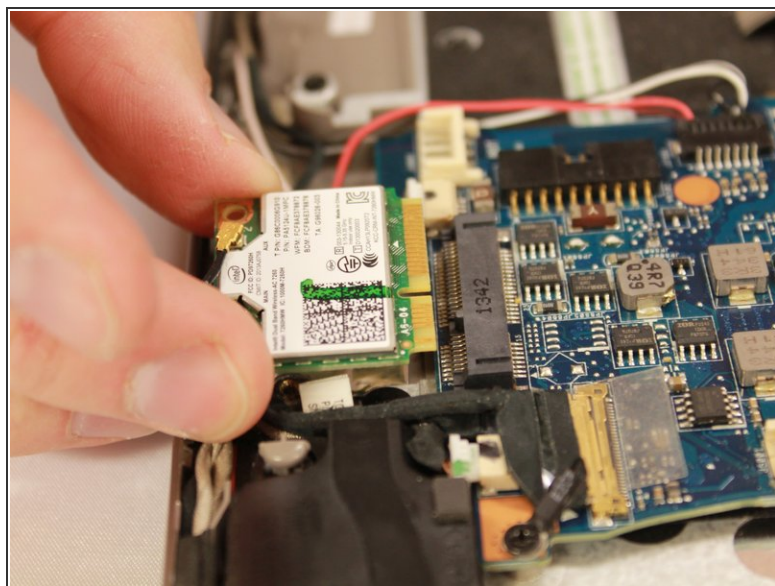
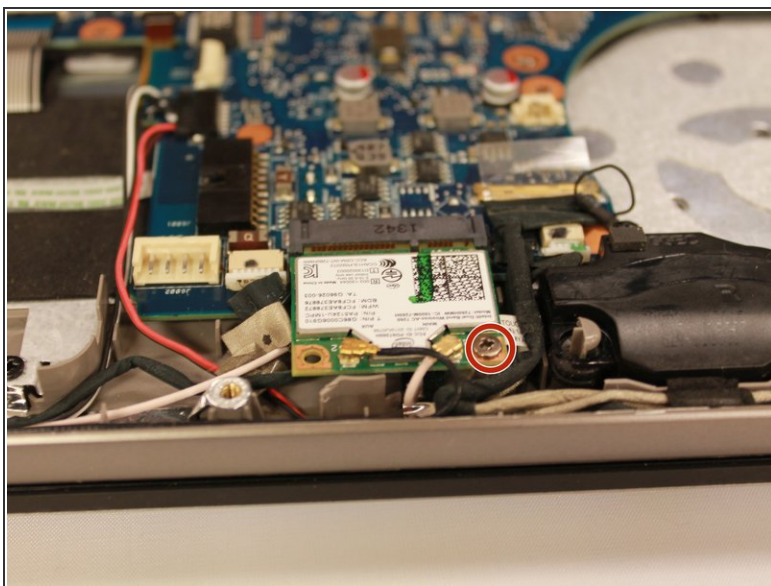


## Step 15



- Remove LAN port/ ethernet port. Lift up the ethernet port.
- Unplug the 8 pin connector.

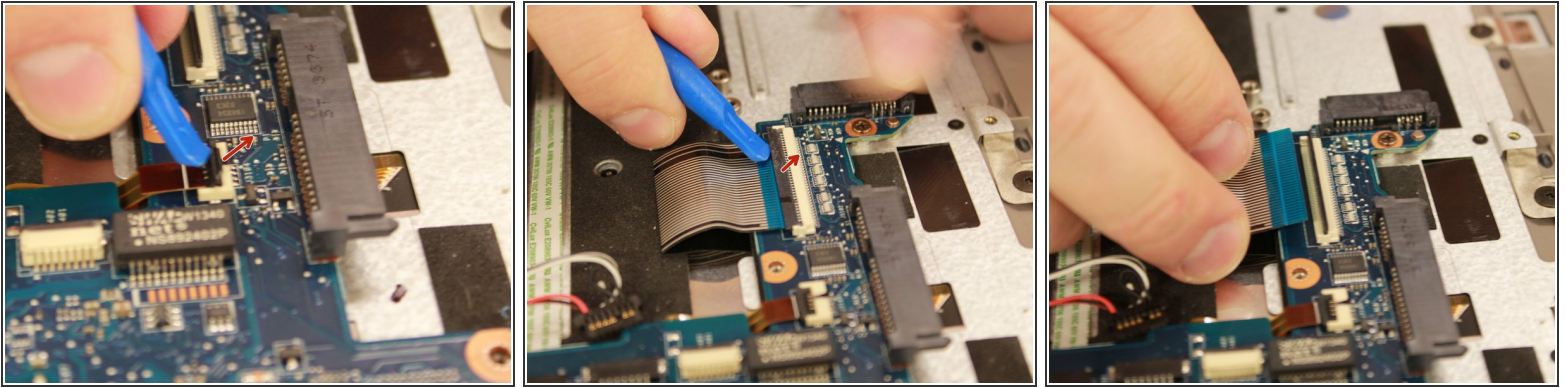
## Step 16



- Using the PH0 screw head, remove 1 (3.8mm) screw.
- Separate the wireless adapter chip from the motherboard.

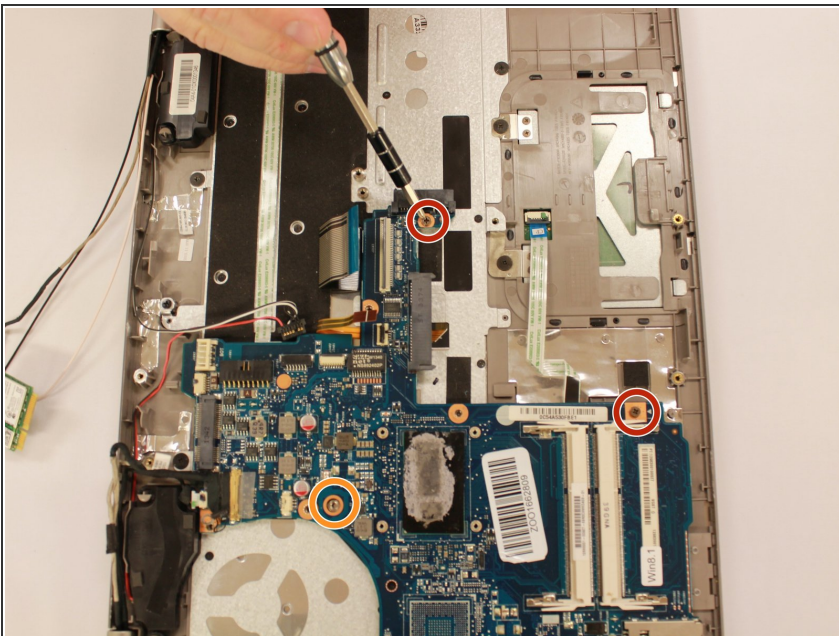


## Step 17



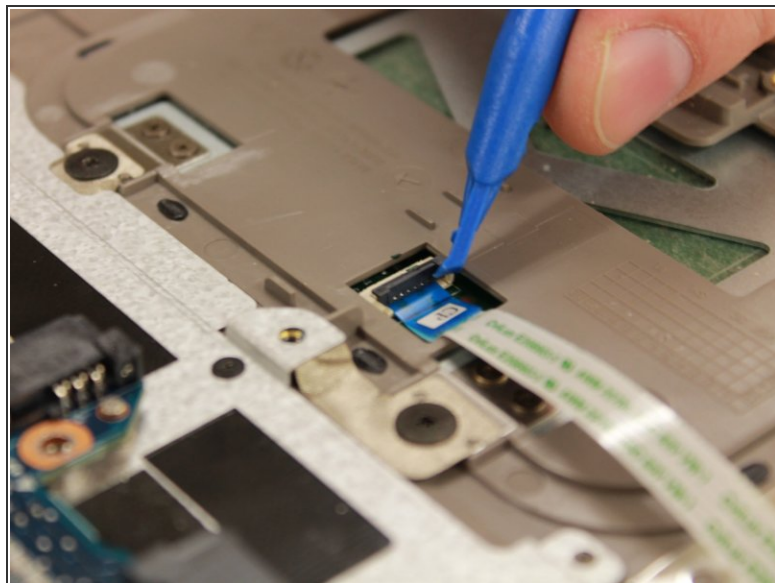
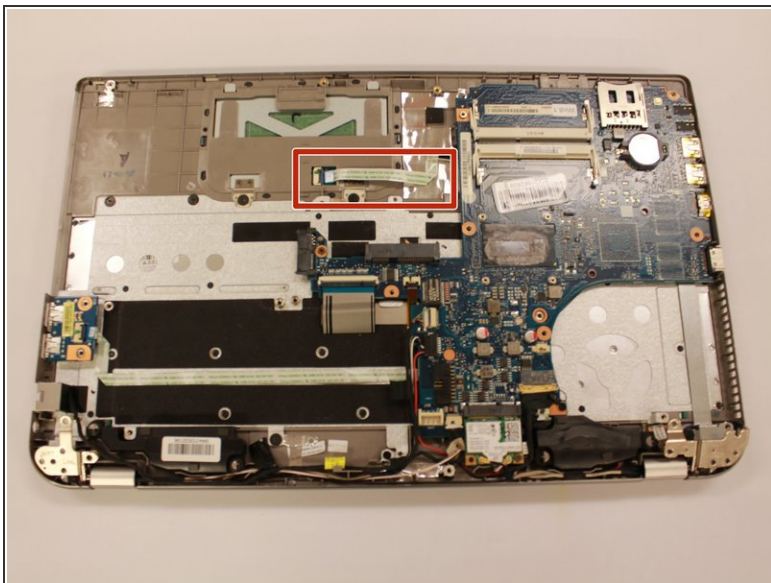
- Using a plastic opening tool, lift up the black ribbon tab and the smaller orange tab which are connected to the keyboard underneath.
- Unplug the ribbons.

## Step 18



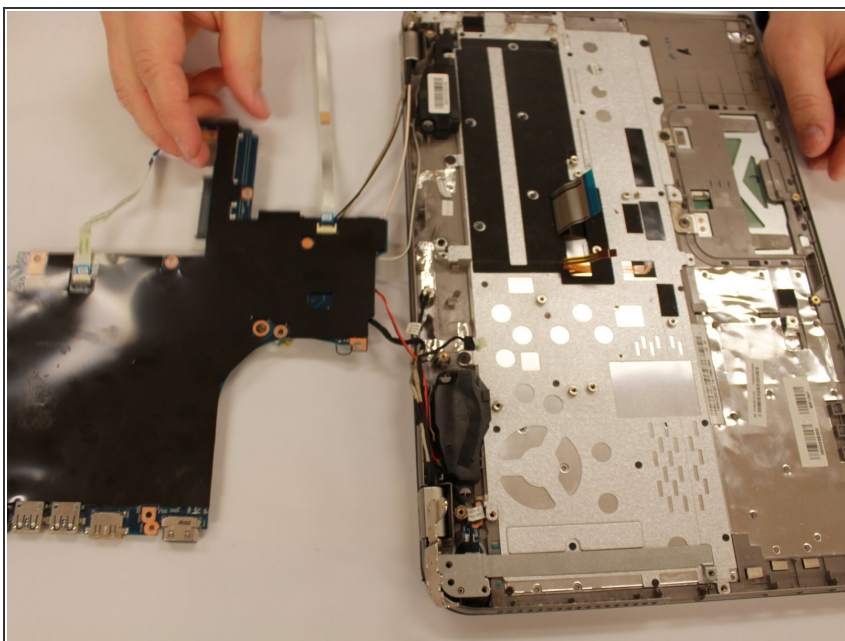
- Using the PH0 screw head, remove 2 (5.7mm) screws.
- Using the PH0 screw head, remove 1 (4.2mm) screw.

## Step 19



- Using a plastic opening tool, remove the CP Tab that was plugged into the touchpad.

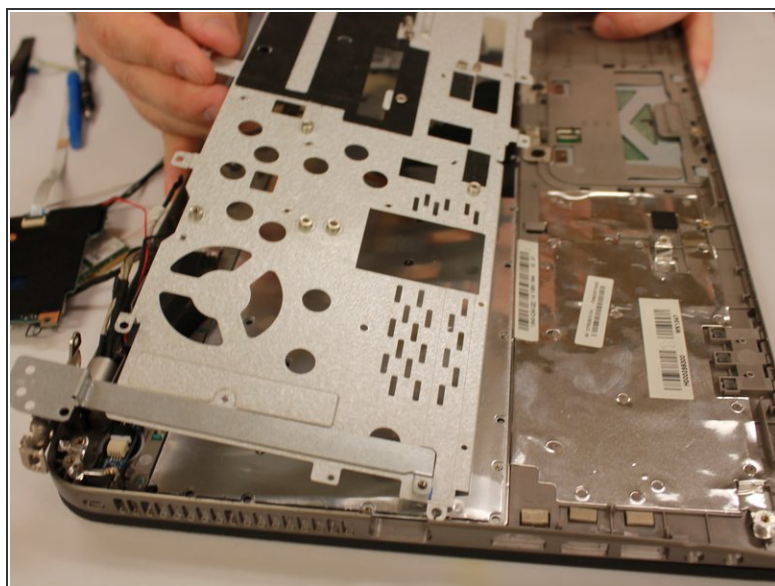
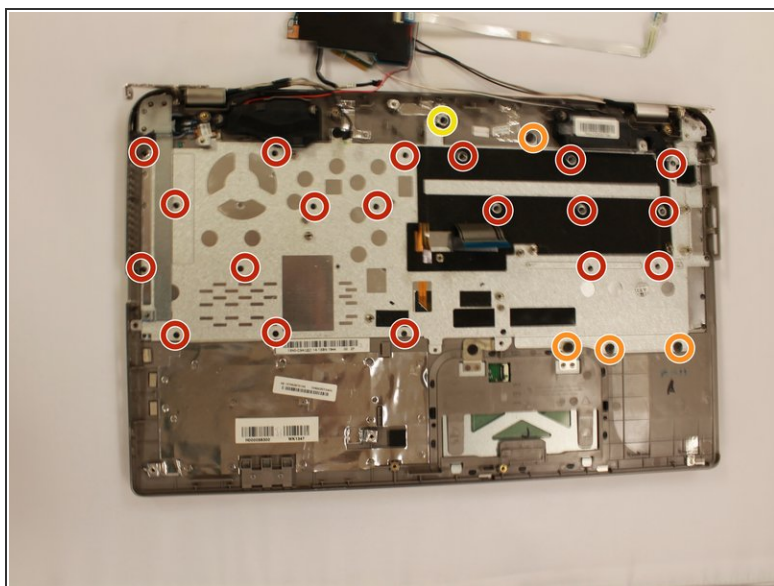
## Step 20



- Lift up the mother board and gently flip it over to sit upside down next to the laptop.

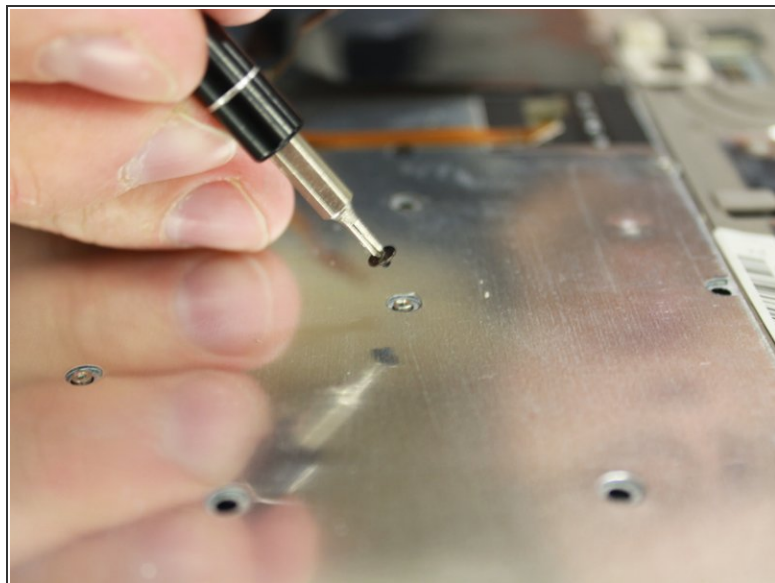
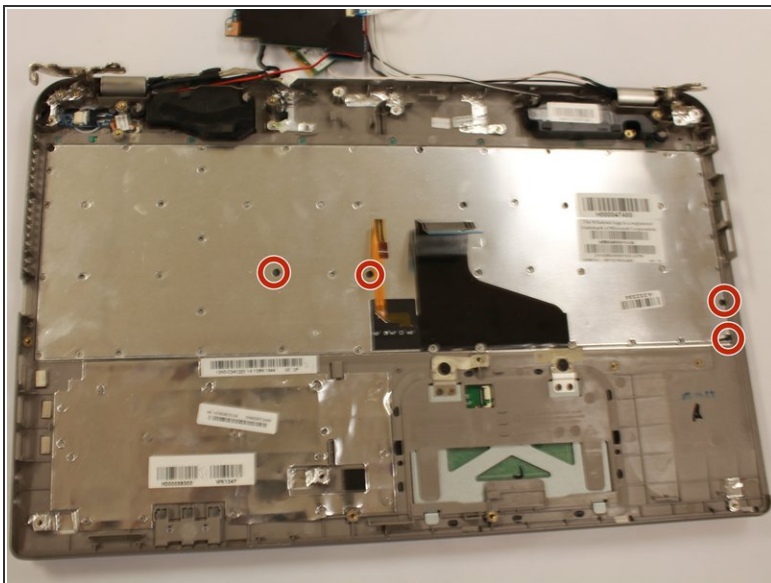


## Step 21



- Using the #J000 screw head, remove 20 (1.67mm) small screws.
- Using the #J000 screw head, remove 4 (2.44mm) wide flathead screws.
- Using the #J000 screw head, remove 1 (4.1mm) screw.
- Gently lift up the metal frame from the laptop.

## Step 22



- Using the #J000 screw head, remove 4 small (1.67 mm) screws.

## Step 23



- Gently lift up the keyboard out of the laptop.

To reassemble your device, follow these instructions in reverse order.