

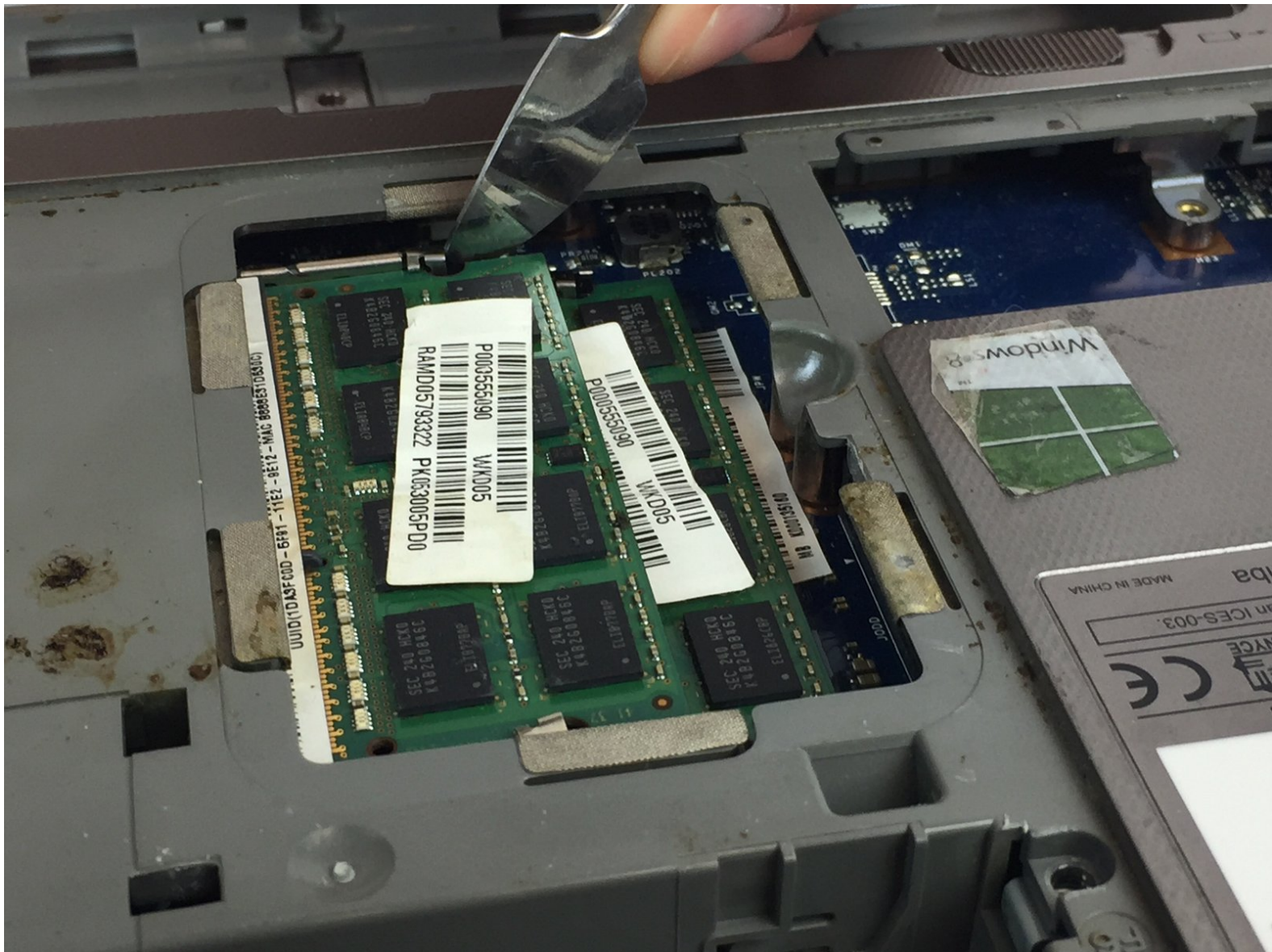


Toshiba Satellite P855-S5102 RAM

Replacement

Replace your Toshiba Satellite P855-S5102 Random Access Memory to prevent computer from freezing or rebooting.

Written By: Benson Smith



This document was generated on 2019-11-11 07:19:22 AM (MST).

INTRODUCTION

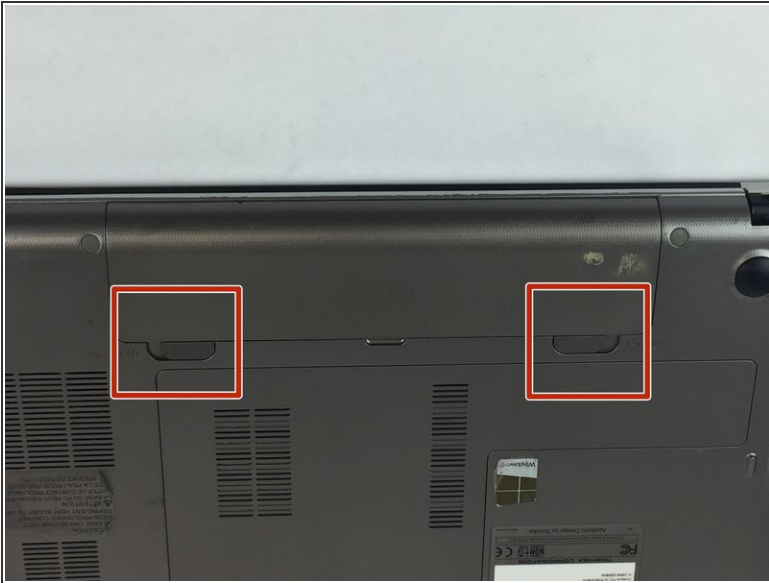
The RAM card is the part of the computer that has memory and stores the data being used by the computer. It keeps the computer's functions regulating smoothly. Below are a few steps to take in order to remove and replace the computer's RAM Cards.



TOOLS:

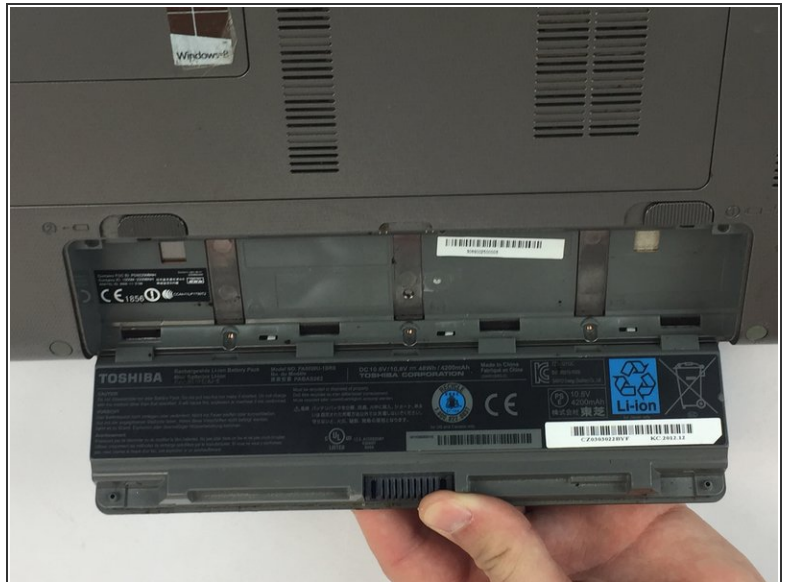
- [Phillips #0 Screwdriver](#) (1)
 - [iFixit Opening Tools](#) (1)
-

Step 1 — Battery



- Push the locking tabs away from each other.

Step 2



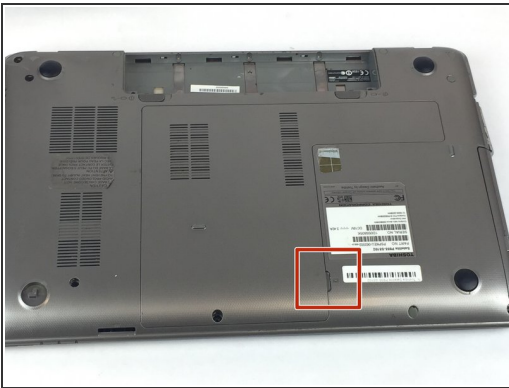
- Pull up on the battery to remove.

Step 3 — RAM



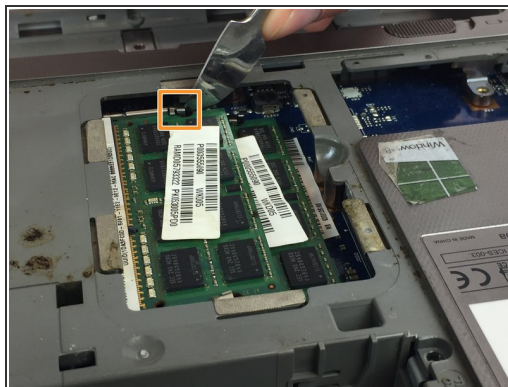
- Remove the 3mm Phillips #0 screw from the cover.

Step 4



- Use a plastic opening tool to lift up the cover and remove by hand.

Step 5



- Two clips secure the RAM module in place, one on each side. Using your fingers, spread the clips away from the RAM module.
- ⓘ When released, the RAM module will pop up at a slight angle.
- Lift the RAM module to an angle of about 30 degrees and slide it out.

To reassemble your device, follow these instructions in reverse order.