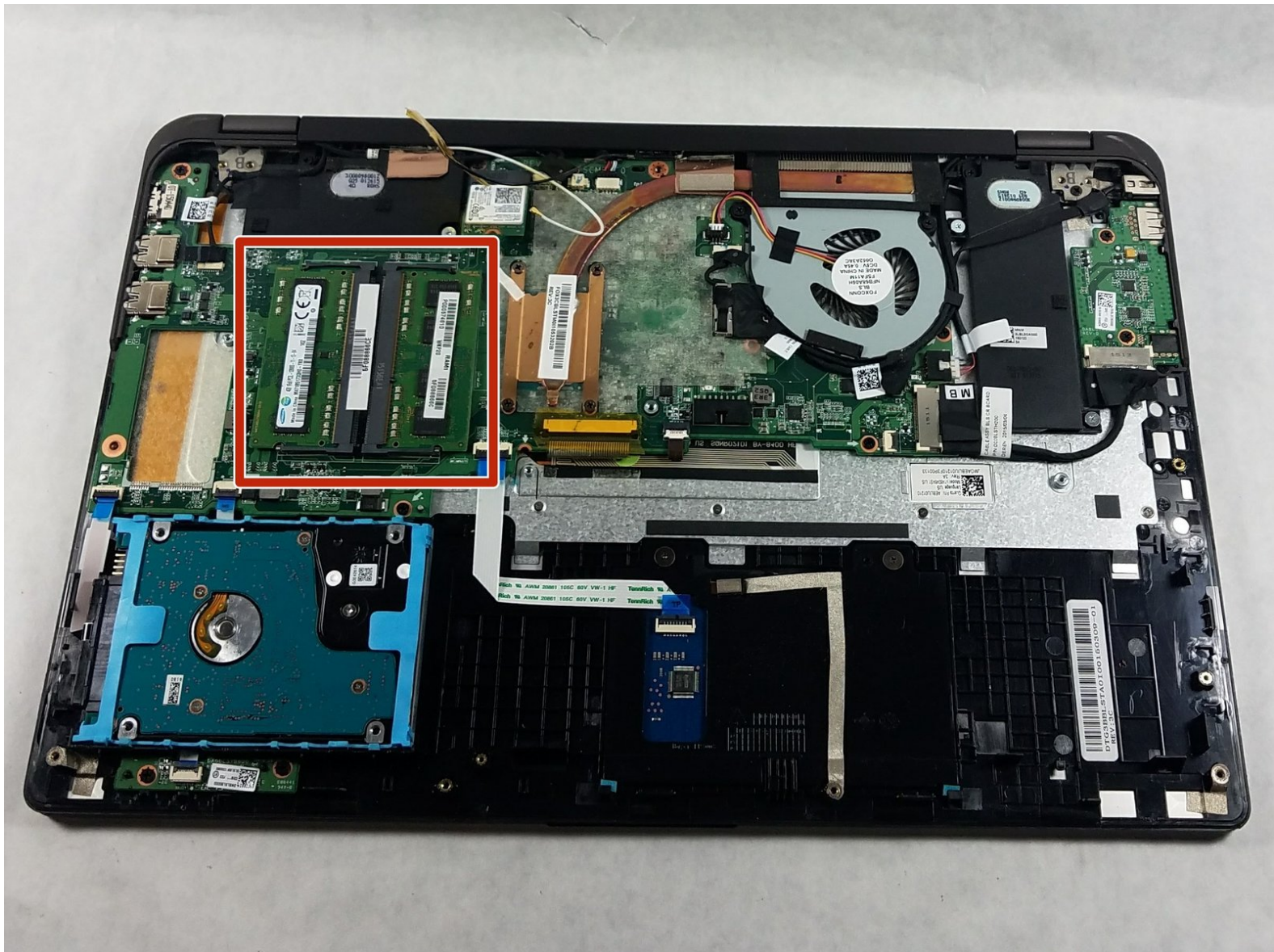




Toshiba Satellite Radius P55W-B5112 RAM Replacement

This guide will help you replace/upgrade the RAM on your Toshiba Satellite Radius P55W-B5112.

Written By: Mudassar Abbas Khan



INTRODUCTION

This guide will help you replace/upgrade the RAM on your Toshiba Satellite Radius P55W-B5112.



TOOLS:

- [Metal Spudger](#) (1)
 - [iFixit Opening Tools](#) (1)
 - [64 Bit Driver Kit](#) (1)
-

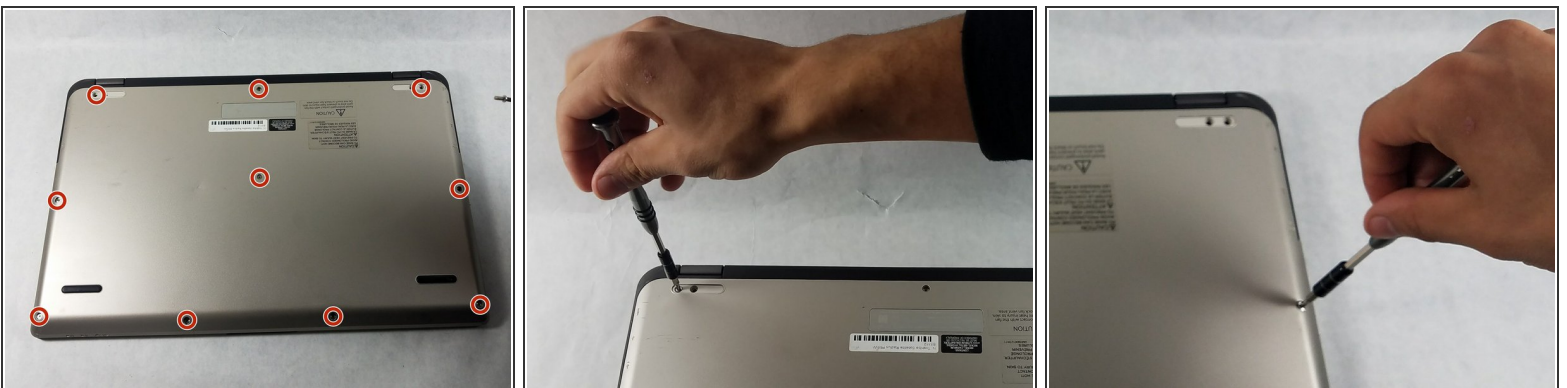
Step 1 — Battery Replacement



- Unplug your laptop from any source of power.
- Lay your laptop on a soft, clean surface as shown.
- Using the metal spudger, remove the two rubber grips on the bottom face of the laptop, located closest to the hinge.

⚠ The grips may be brittle. Be careful when removing them with the metal spudger so as not to damage them.

Step 2



- Remove the ten 5mm Phillips #0 screws that secure the back plate to the computer.

Step 3



- Starting on the edge that is opposite the hinge, use the plastic opening tools to pry the back plate away from the computer.
- Loosen the three non-hinge edges.
- Leave a plastic opening tool in each corner to ensure that one side does not snap closed before you are done opening the others.

 DO NOT lift the back plate away from the computer; it is still connected to the motherboard.

Step 4



- To loosen the back plate, lift it slightly and gently pull it away from the hinge.
- Flip the back plate open towards the power button, but be sure to not pull on the ribbon cable that connects the back plate to the motherboard.
- Use a plastic opening tool to detach the side of the ribbon cable connected to the computer by prying up gently on the small black lever at the point of attachment.

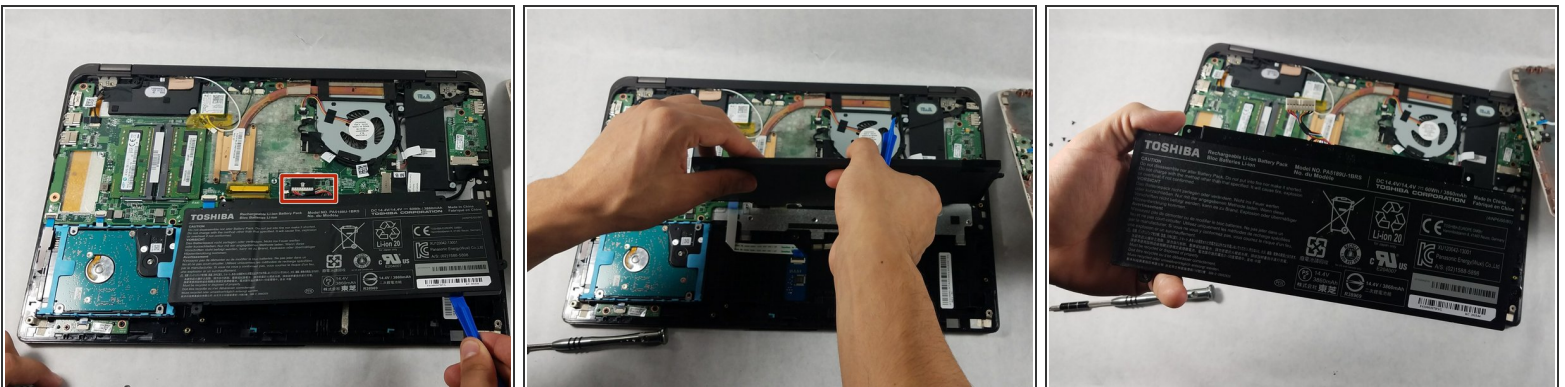
This document was generated on 2020-04-03 09:24:40 AM (MST).

Step 5



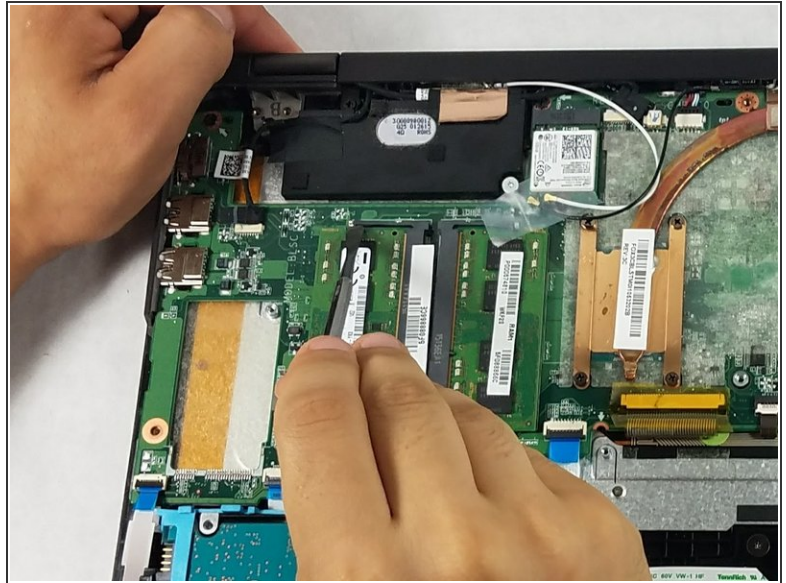
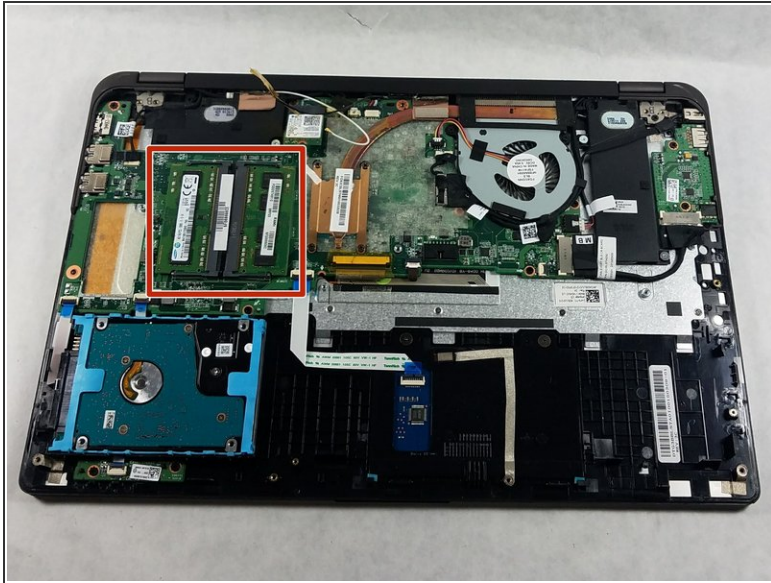
- Remove the four 3mm Phillips #0 screws connecting the battery to the computer.

Step 6



- Use a plastic opening tool to lift the side of the battery that is closest to the long edge of the computer.
- As you are pulling the battery away from the computer, unplug it from the side closest to the short edge of the computer.
- i There may be a lot of resistance when unplugging the battery. If there is, try to wiggle the male side of the plug back and forth as you remove it.

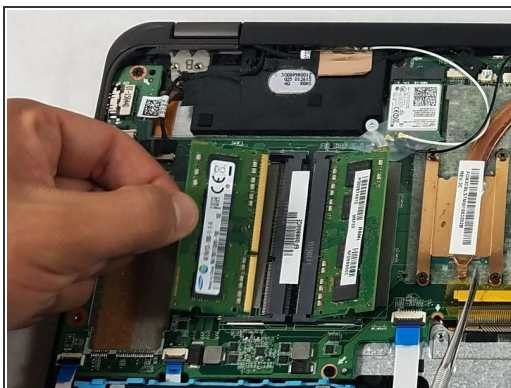
Step 7 — RAM Replacement



- Use a spudger to gently pry up the plastic brackets holding on each RAM drive. The long edges of each drive furthest from one another should pop up at an angle.

⚠ While a metal spudger is used in these photos, using plastic opening tools instead will lower your chances of damaging your device.

Step 8



- Remove each RAM drive by pulling at an upwards angle in the direction of its free edge.

To reassemble your device, follow these instructions in reverse order.