



# Toshiba Satellite Radius P55W-B5220

## Motherboard Replacement

This guide shows how to replace the motherboard in the Toshiba Satellite Radius P55W-B5220.

Written By: Nicole Kohm



## INTRODUCTION

The motherboard of your device acts as a meeting point for crucial components, such as the CPU and input and output devices. To replace a damaged or defective motherboard, you will remove all connected peripherals, replace the motherboard, and reconnect all peripherals.



### TOOLS:

- [Spudger](#) (1)
- [Phillips #0 Screwdriver](#) (1)



### PARTS:

- [Toshiba Satellite Radius P55W-B5220 Motherboard](#) (1)

## Step 1 — Motherboard



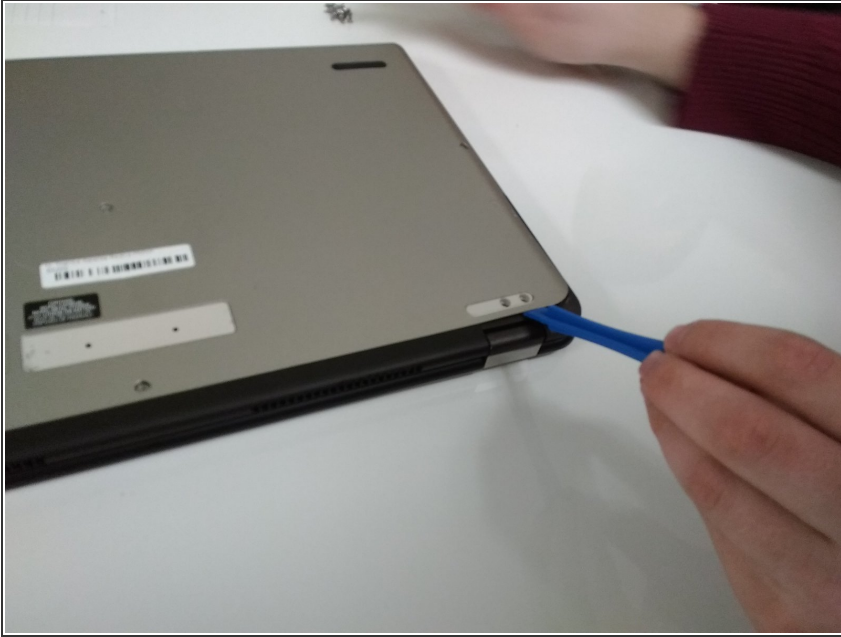
- Using the plastic opening tool, remove the two rubber feet closest to the hinge.

## Step 2



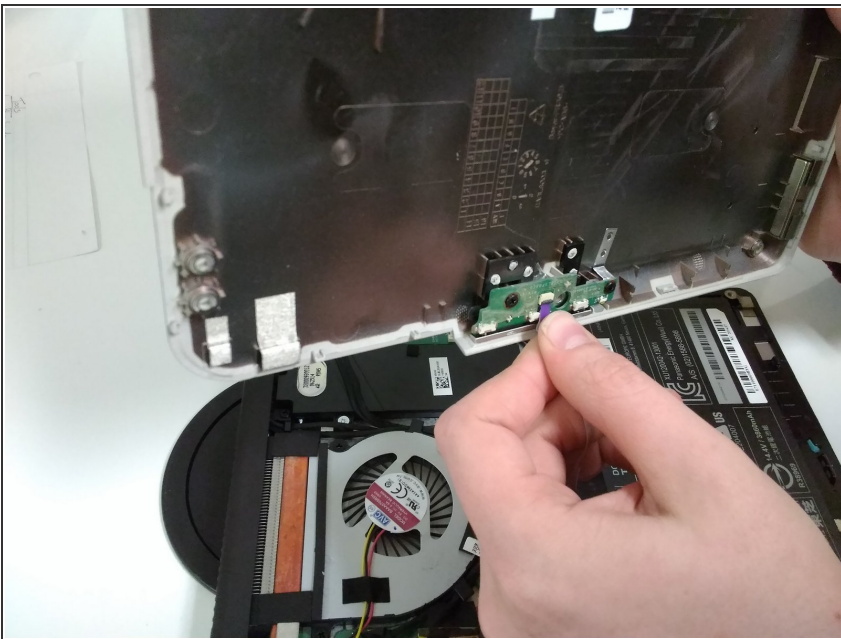
- Remove the 12 M2x4mm PH0 Philips screws.

### Step 3



- Near the hinges, wedge a plastic opening tool under the back panel.

### Step 4



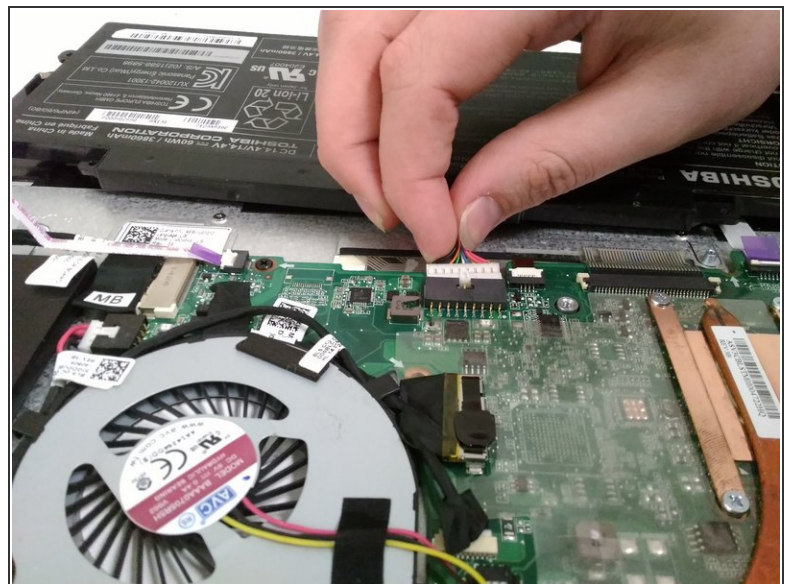
- Unlatch the LED indicator from the back panel.

## Step 5



- Using a P0 Philips head screwdriver, Remove the four M2x2.5mm P0 Philips screws from the battery.

## Step 6



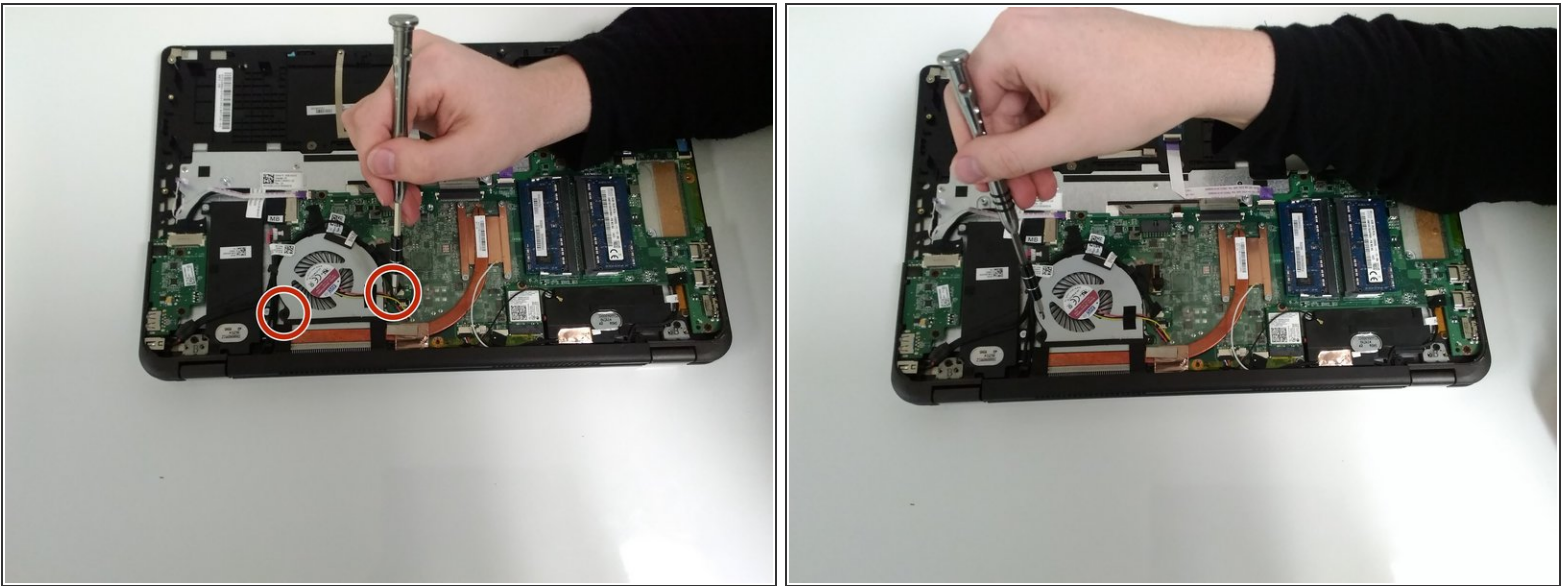
- Lift the battery.
- Disconnect the battery.

## Step 7



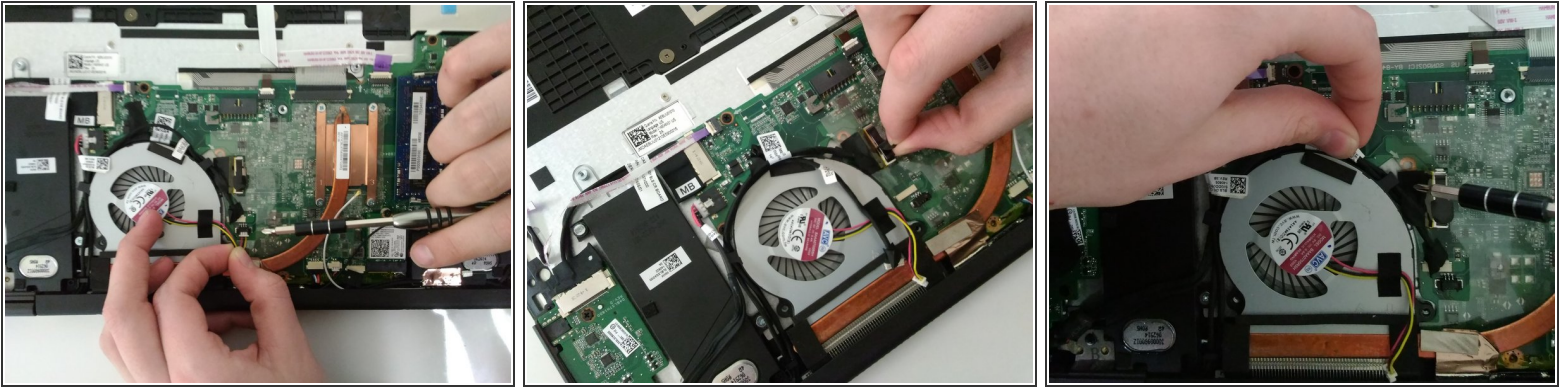
- Disconnect the ribbon cable of the touchpad from the motherboard.

## Step 8



- Remove the two M2x2.5mm P0 Philips screws from the fan.

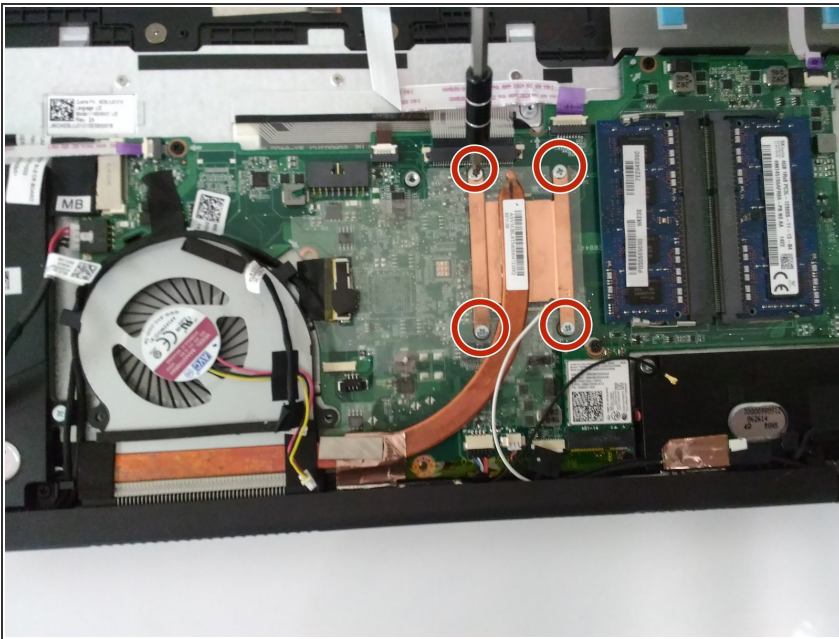
## Step 9



- Disconnect the fan cables.

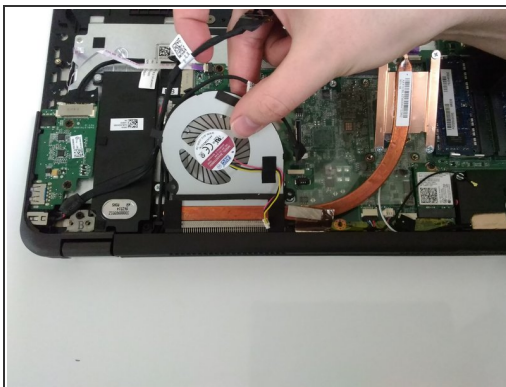
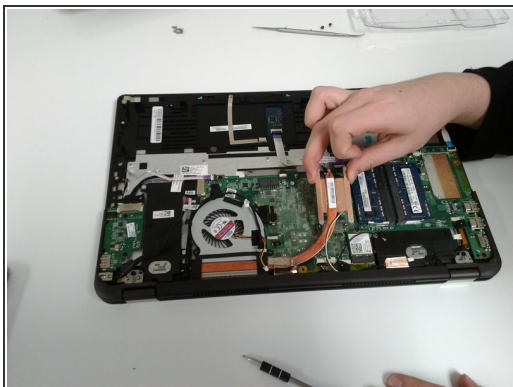
 **Carefully unhook the wires from the base of the fan.**

## Step 10



- Unscrew the four M2x4mm PH0 Philips screws from the CPU mounts on the motherboard.

## Step 11

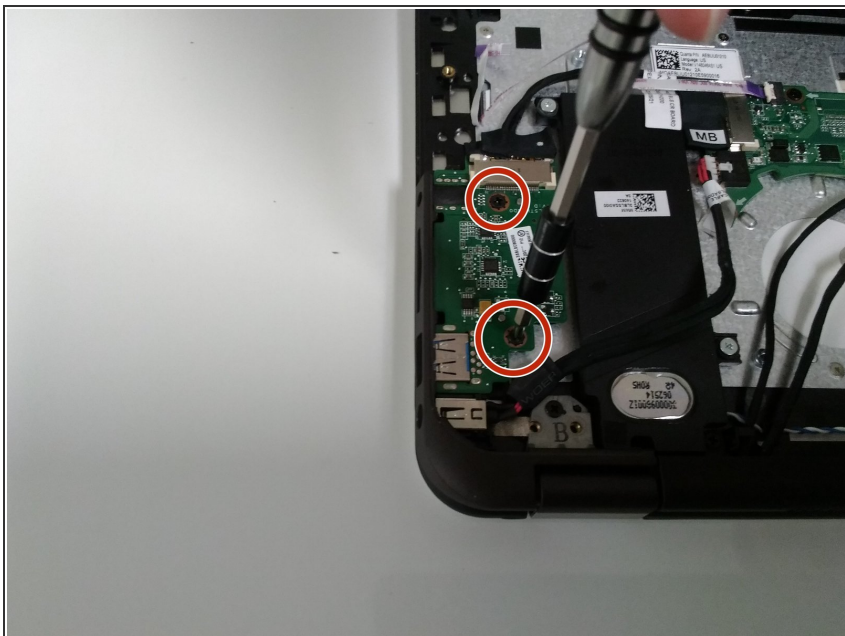


- Carefully lift the heatsink off the CPU.

⚠ Avoid bending or kinking the tubing.

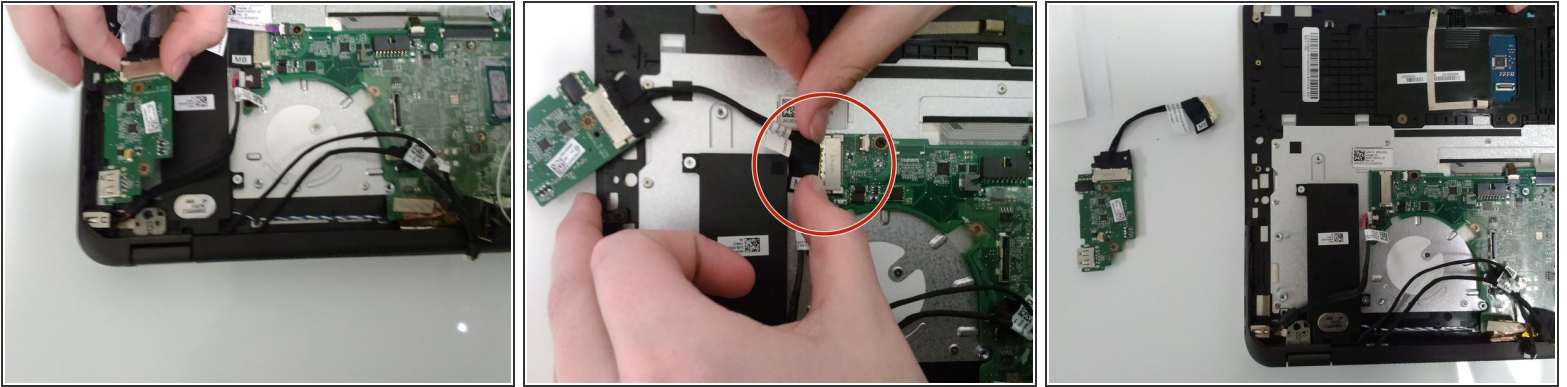
⚠ Delicately lift the fan out with the heatsink.

## Step 12



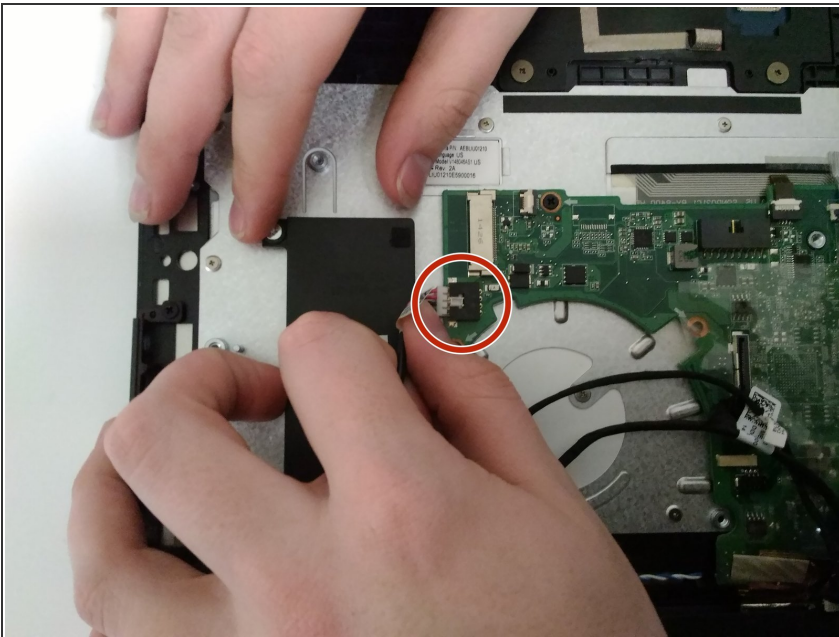
- Remove the M2x2.5mm P0 Philips screw from the USB controller.

## Step 13



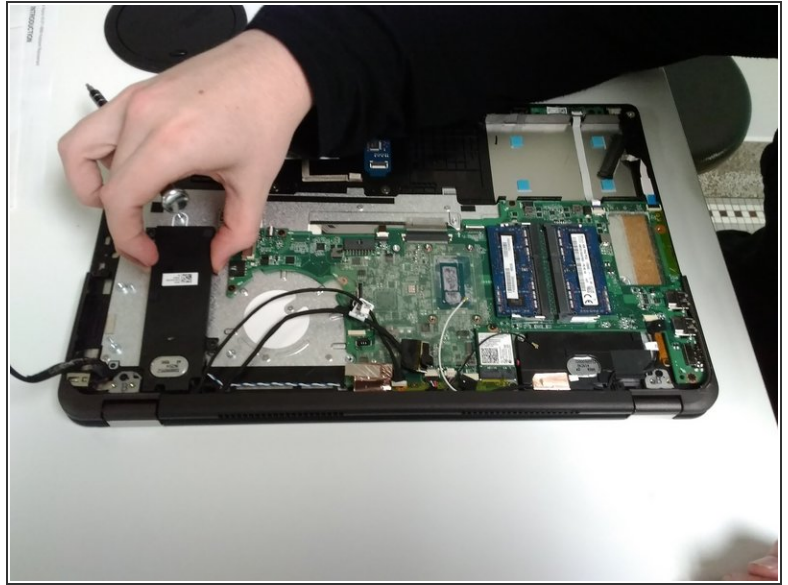
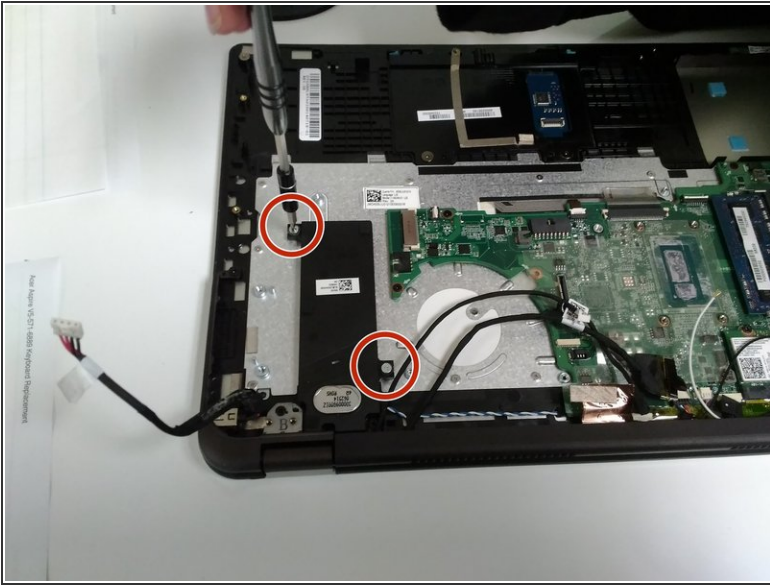
- Lift the USB controller from the motherboard.
- Detach the USB controller from the motherboard.

## Step 14



- Disconnect the left speaker from the motherboard.

## Step 15



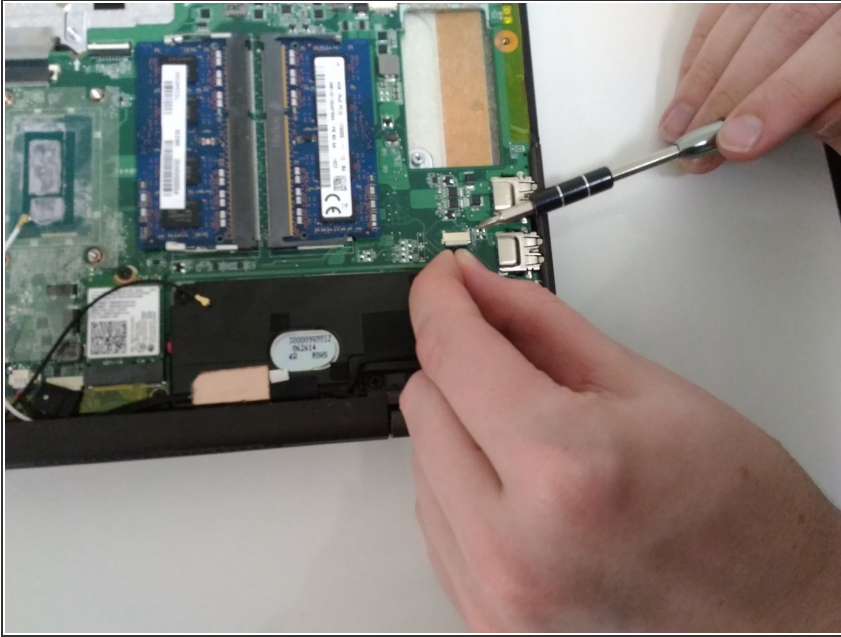
- Remove the two M2x4mm PH0 Philips screws for the speaker mounts.

## Step 16



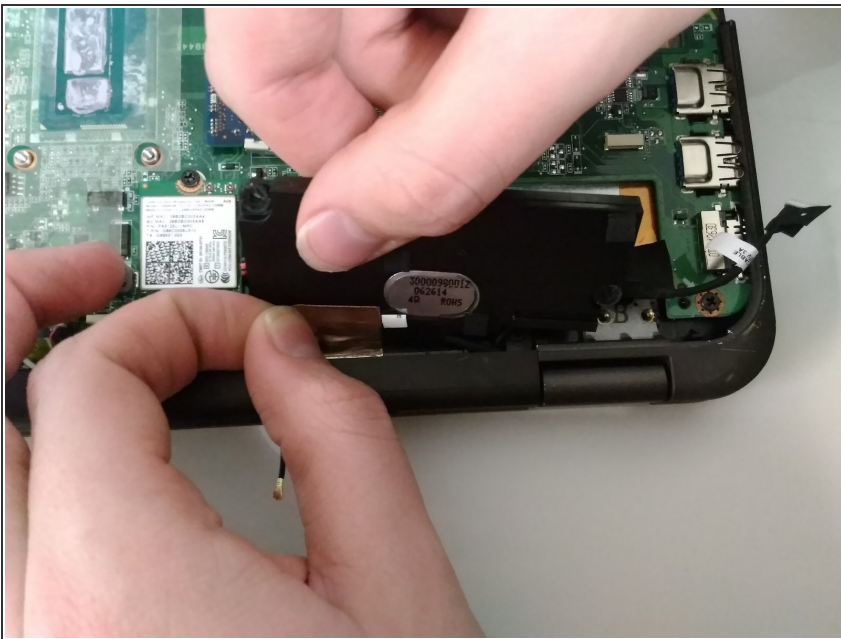
- Unhook the speaker from under the hinge cable mounts.

## Step 17



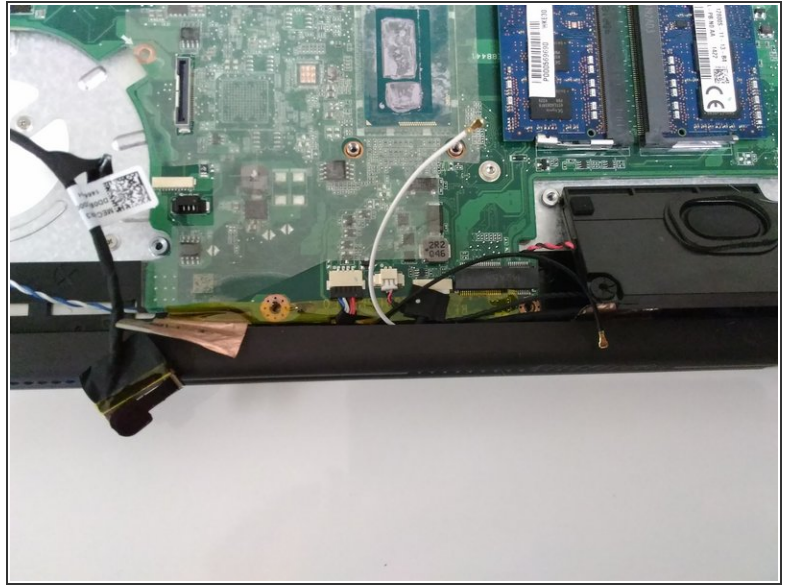
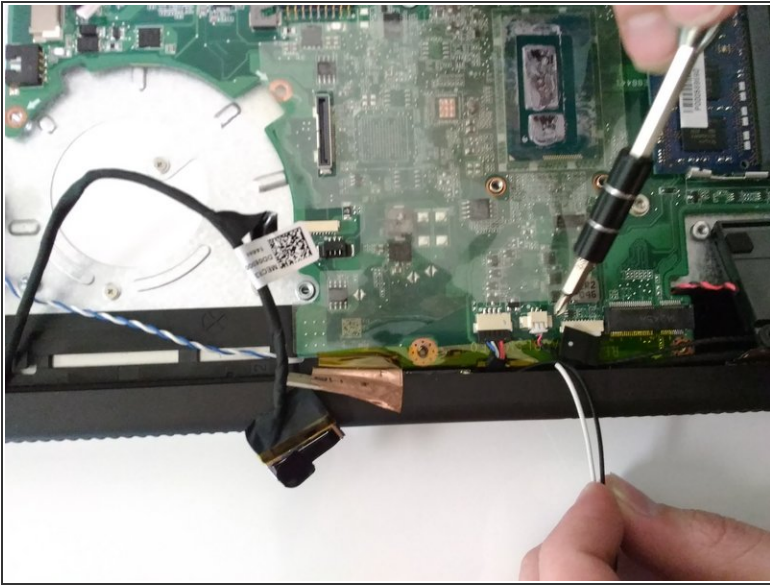
- Unhook the right speaker cable from the motherboard.

## Step 18



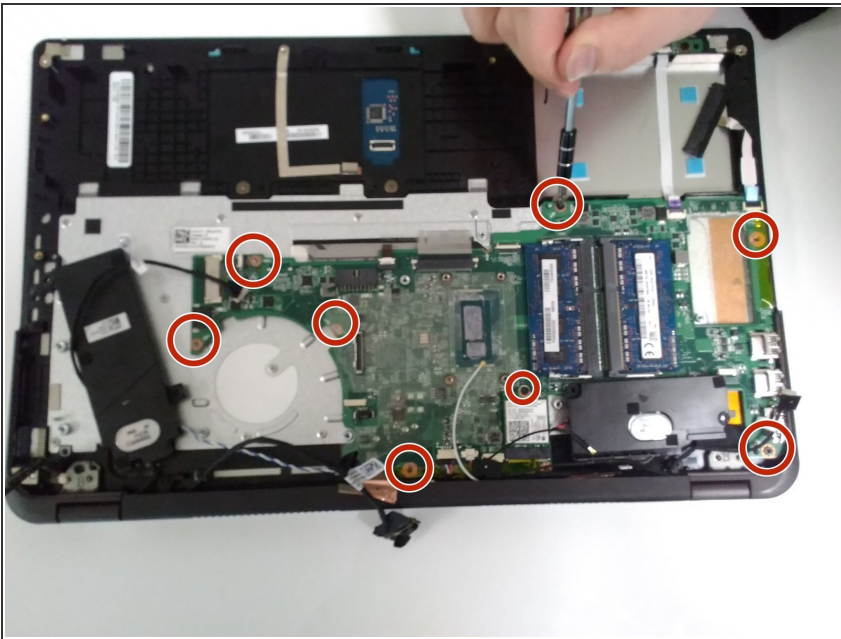
- Remove the copper tape from the speaker cord.

## Step 19



- Unhook the speaker cables from under the catch under the hinge.

## Step 20



- Remove the eight M2x2.5mm P0 Philips screws from the motherboard.

## Step 21



- Remove the motherboard.

To reassemble your device, follow these instructions in reverse order.