



Toshiba Satellite Radius P55W-B5220 USB/SD/headphone jack Replacement

A guide to replace the SUB/SD card/headphone jack within your Toshiba Radius.

Written By: Garrett barta



INTRODUCTION

A guide to replace the SUB/SD card/headphone jack within your Toshiba Radius.




TOOLS:

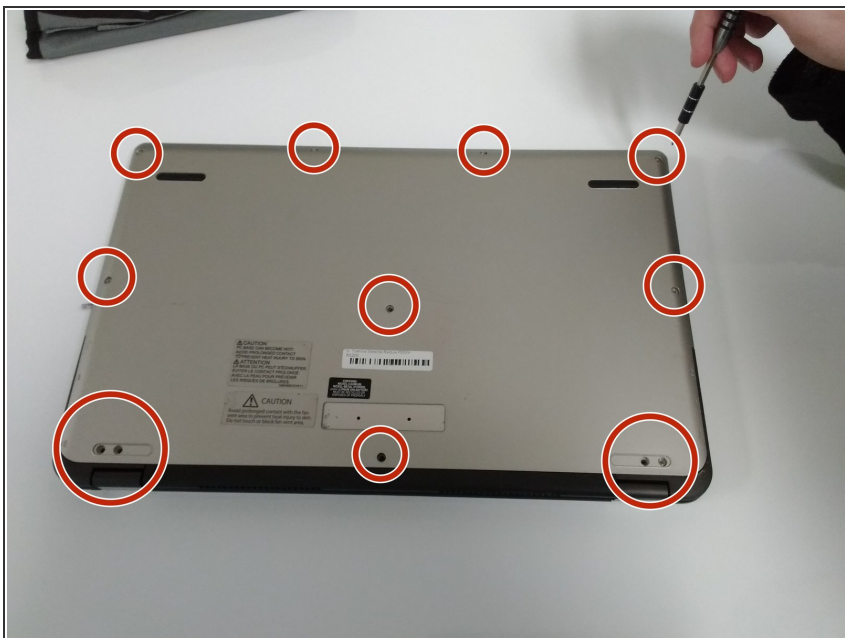
- [Phillips #0 Screwdriver](#) (1)
 - [iFixit Opening Tools](#) (1)
-

Step 1 — Back Cover



-  Turn off the laptop before starting.
- Remove the two rubber feet closest to the hinge with a plastic opening tool.

Step 2



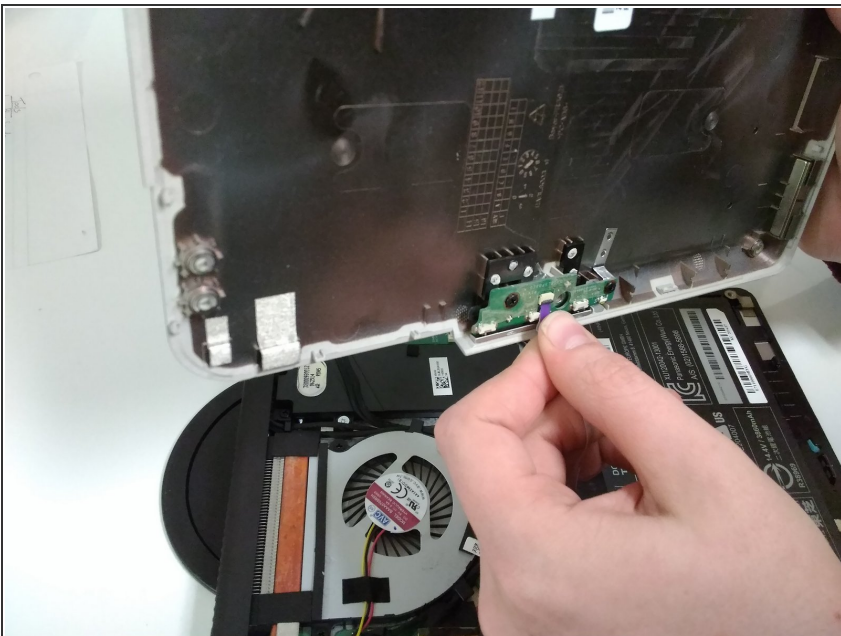
- Remove the twelve M2x4mm PH0 Philips head screws.

Step 3



- Loosen the back cover with a plastic opening tool.
- ⓘ The least damaging way to pry the cover is to start from a corner and run the spudger along the edge.
- ⚠ Do not crack or bend the cover.

Step 4



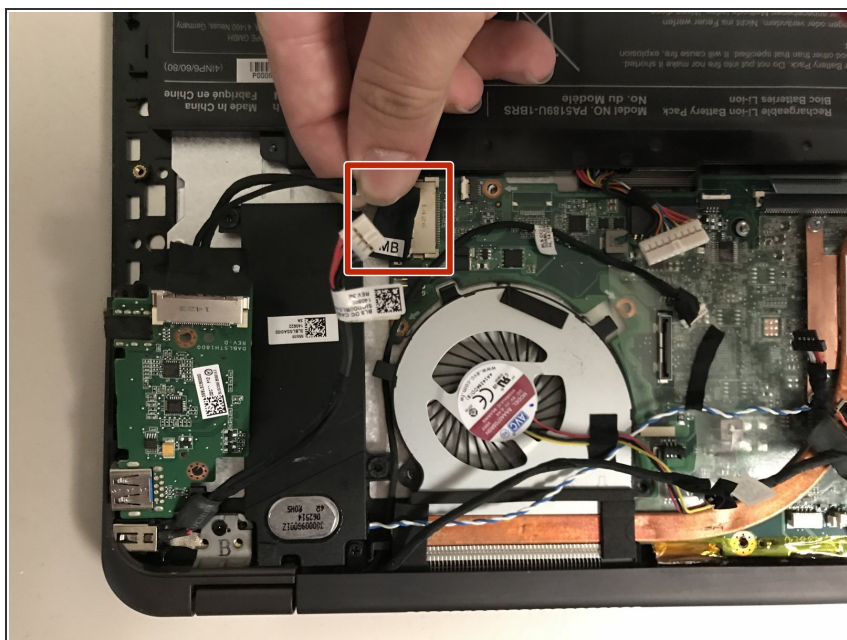
- Carefully lift open the cover.
- Remove the attached purple ribbon cable underneath the cover.
- ⚠ Do not rip the ribbon cable.

Step 5 — USB/SD/headphone jack



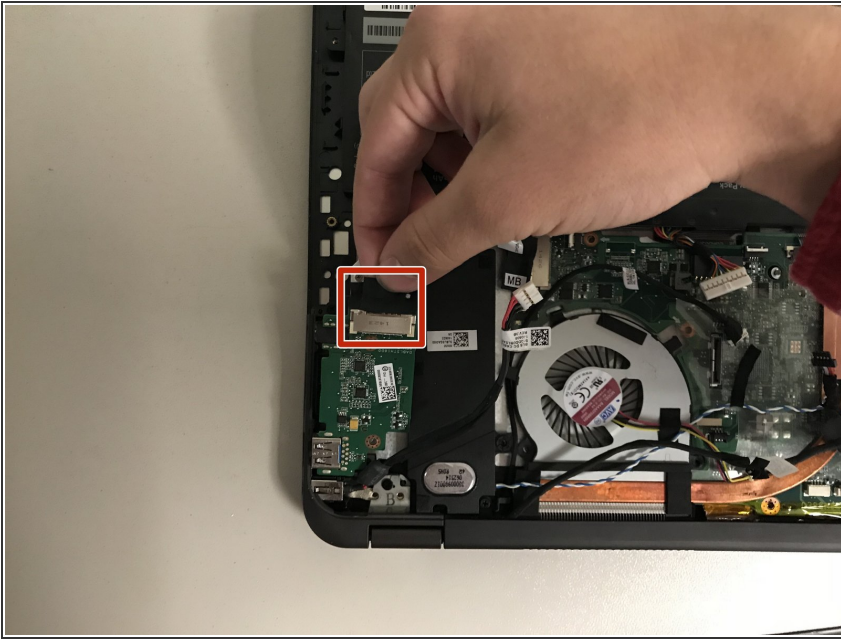
- Unscrew the two screws holding the panel of the UBS/SD card/headphone jack

Step 6



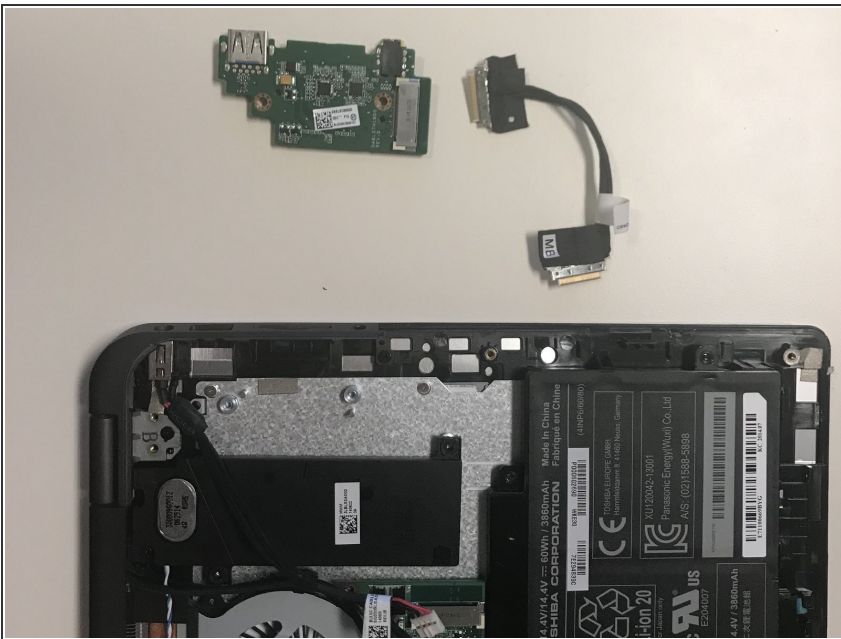
- disconnect the cable shown from the motherboard

Step 7



- disconnect the cable attached to the top of the USB/SD card/headphone jack interface

Step 8



- remove the interface

To reassemble your device, follow these instructions in reverse order.