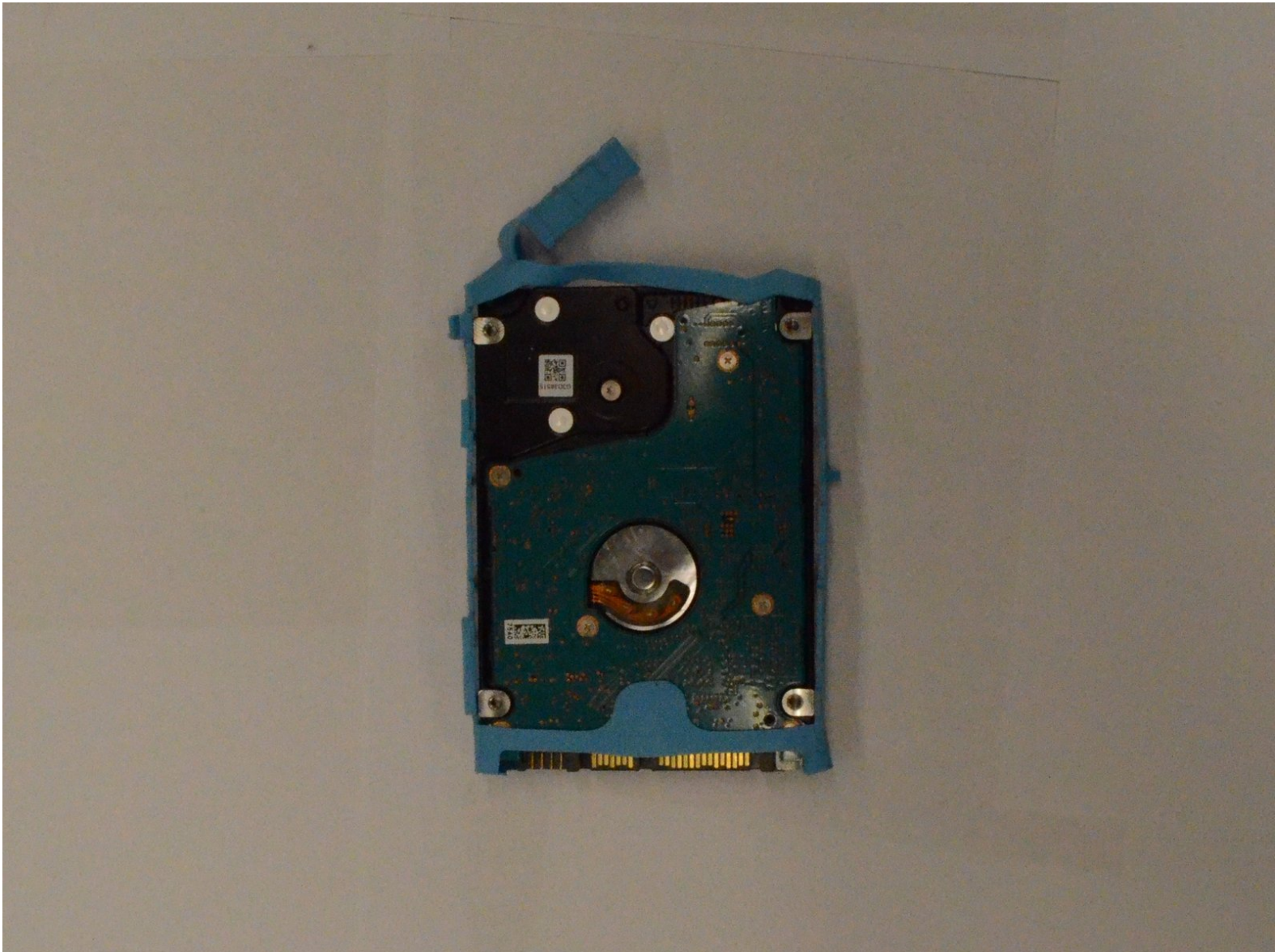




Toshiba Satellite S50-B Hard Drive Replacement

How to replace the hard drive of the Toshiba Satellite S50-B.

Written By: Victoria Murillo



INTRODUCTION

This guide details how to replace the hard drive of a Toshiba Satellite S50-B laptop. You will need a Phillips 0 screwdriver and a plastic opening tool for this replacement.



TOOLS:

- [Phillips #0 Screwdriver](#) (1)
- [iFixit Opening Tools](#) (1)



PARTS:

- [1 TB SSD / Upgrade Bundle](#) (1)
- [250 GB SSD / Upgrade Bundle](#) (1)
- [500 GB SSD / Upgrade Bundle](#) (1)
- [2 TB SSD / Upgrade Bundle](#) (1)

Step 1 — Battery



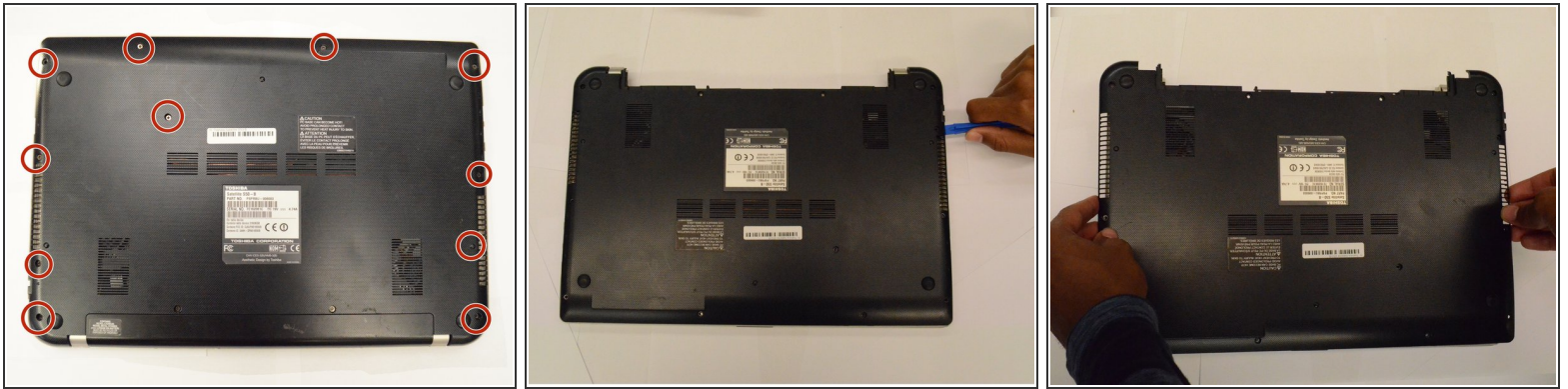
- i** Make sure you turn off the laptop first.
- Unscrew the two 6.5mm screws below the battery using a Phillips #0 Screwdriver.

Step 2



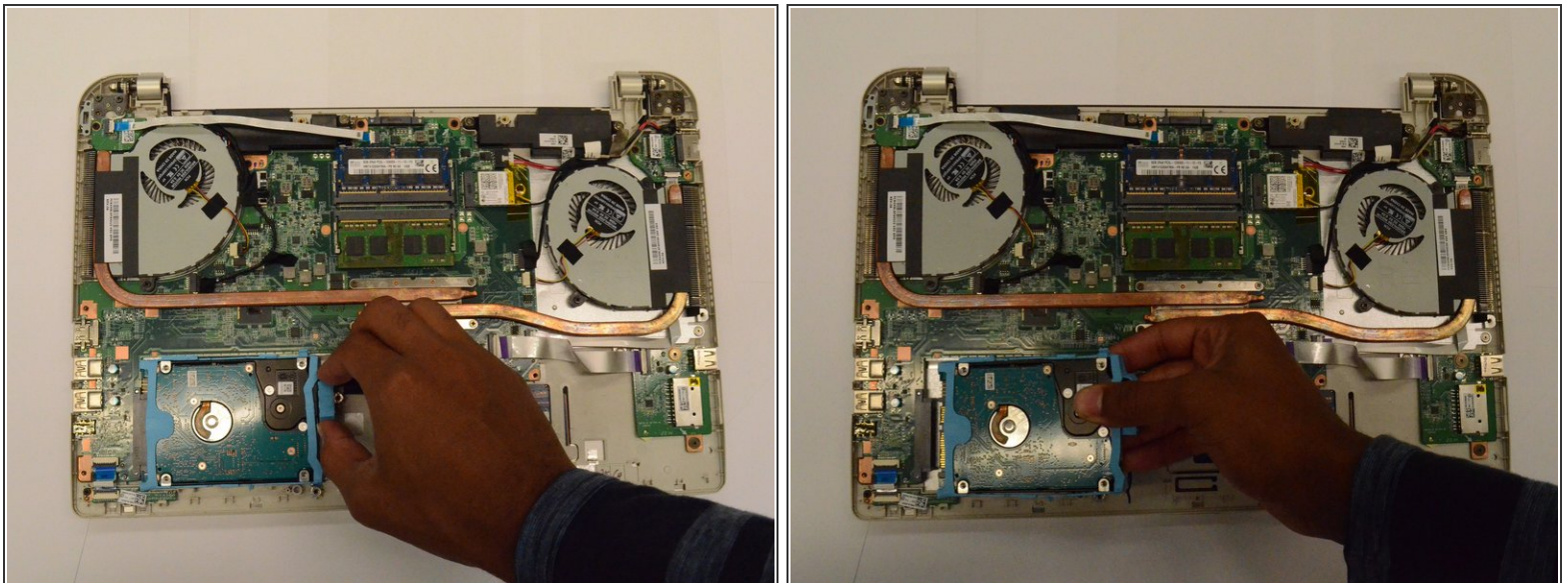
- Place thumbs on corners of the battery. Pinch the battery between the thumb and index finger and pull.

Step 3 — Hard Drive



- Locate the 12 screws on the bottom of the device. Unscrew using a Phillips screwdriver, and set screws aside.
- Use a plastic opening tool to remove bottom casing.

Step 4



- Use the plastic casing over the hard drive to lift the hard drive up.
- Once hard drive is slightly lifted up, make sure the laptop is in correct orientation with the battery away from you, and pull the hard drive towards right.

To reassemble your device, follow these instructions in reverse order.