



Toshiba Satellite S55T-B5335 Battery Replacement

This guide will walk you through the simple process of removing the battery from the Toshiba Satellite S55T-B5335.

Written By: George Gillespie



INTRODUCTION

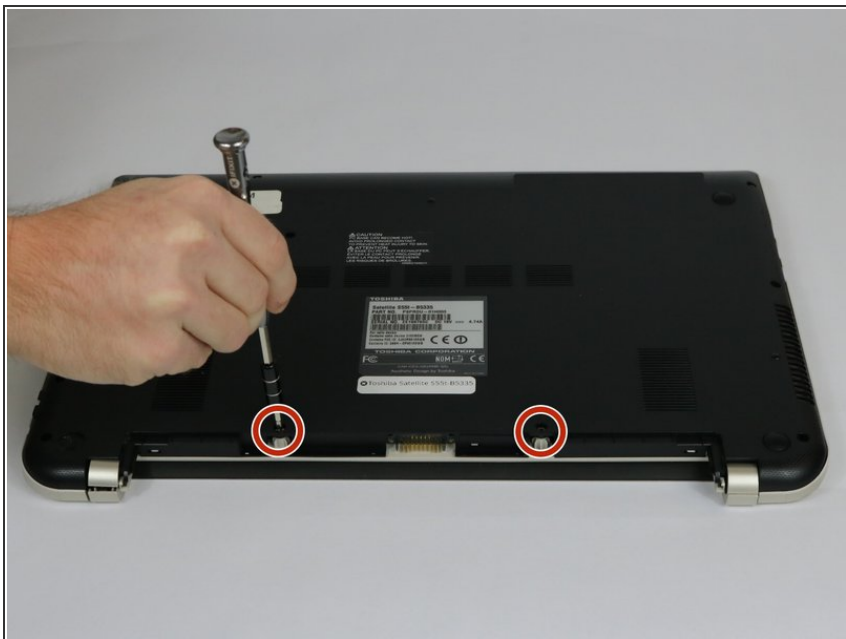
Removing the battery is the first step in many instances where the laptop needs to be repaired or battery needs to be replaced. This is a simple process that requires only two screws to be removed. Please refer to the [Battery Troubleshooting Guide](#) to determine if your cooling fan needs to be replaced.



TOOLS:

- [Phillips #1 Screwdriver](#) (1)
-

Step 1 — Battery



- Remove the two 7 mm Phillips #1 screws that hold the battery in place.

Step 2



- Pull the battery from laptop.

To reassemble your device, follow these instructions in reverse order.