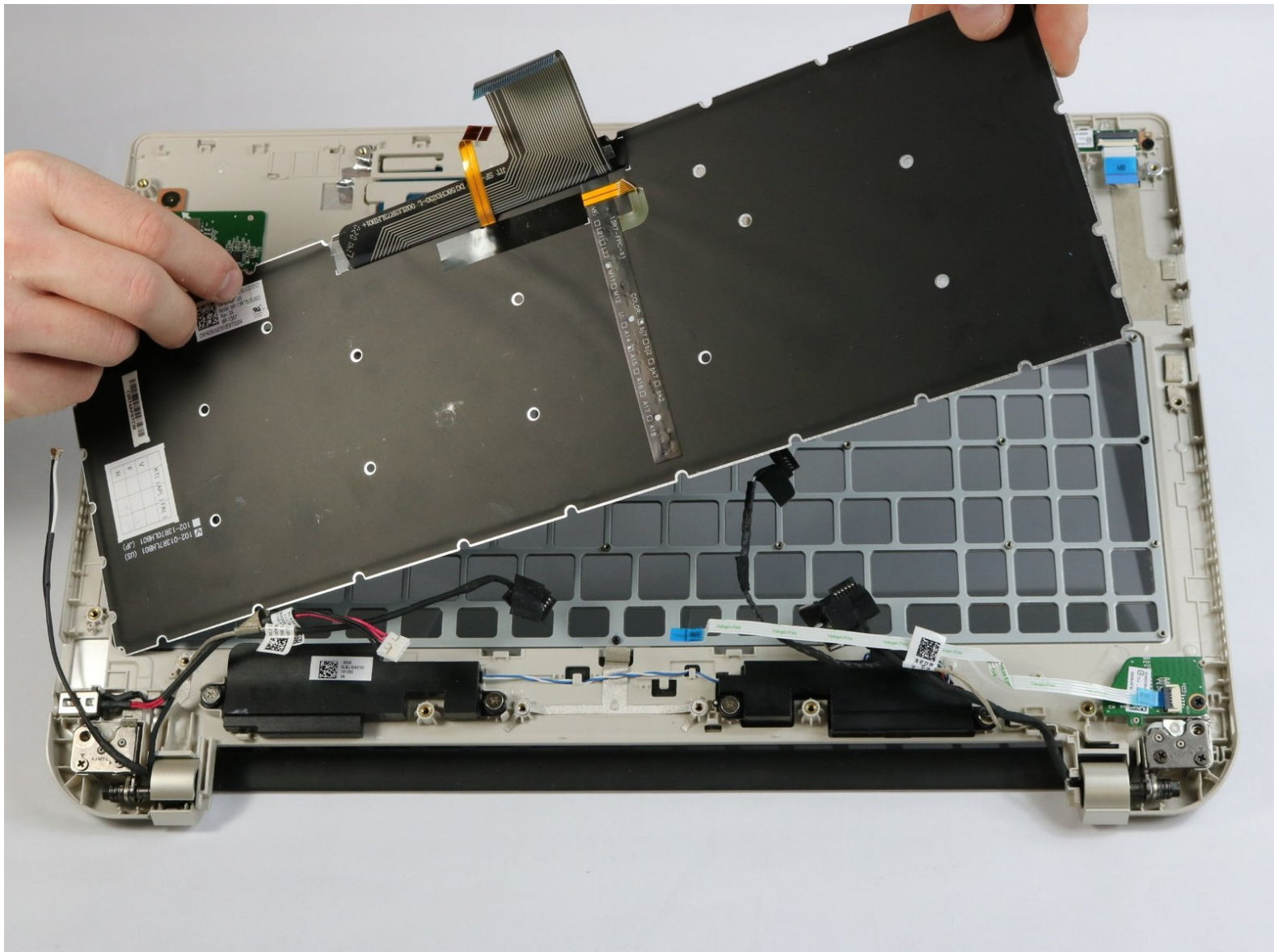




# Toshiba Satellite S55T-B5335 Keyboard Replacement

This guide will aid in the replacement of a faulty keyboard

Written By: George Gillespie



## INTRODUCTION

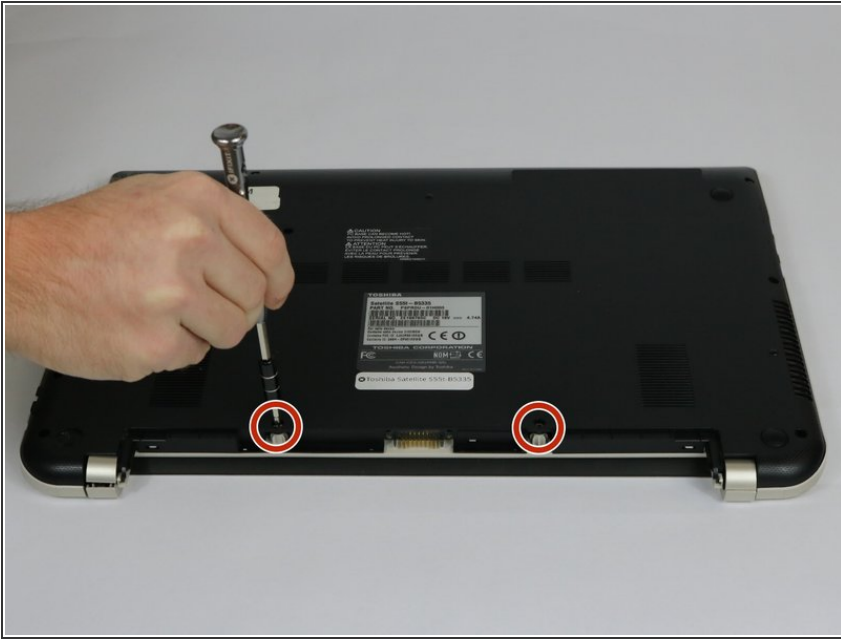
The keyboard may need to be replaced when a key(s) does not work as intended. This is possibly the most difficult part to replace on this laptop as it requires the most parts to be removed. Please refer to the [Keyboard Troubleshooting Guide](#) to determine if your keyboard needs to be replaced.



### TOOLS:

- [Heavy-Duty Spudger](#) (1)
  - [Tweezers](#) (1)
  - [Phillips #1 Screwdriver](#) (1)
  - [iFixit Opening Tools](#) (1)
  - [Phillips #0 Screwdriver](#) (1)
-

## Step 1 — Battery



- Remove the two 7 mm Phillips #1 screws that hold the battery in place.

## Step 2



- Pull the battery from laptop.

## Step 3 — Bottom Cover



- Remove the ten 7 mm Phillips #1 screws that secure the back cover.

## Step 4



- Wedge the tip of a plastic opening tool between the back cover and the metal frame.
- Twist the plastic opening tool, while wedged, in order to release the retaining tabs from the frame.
- Repeat these steps in a circular pattern around the laptop to release all retaining tabs.



## Step 5



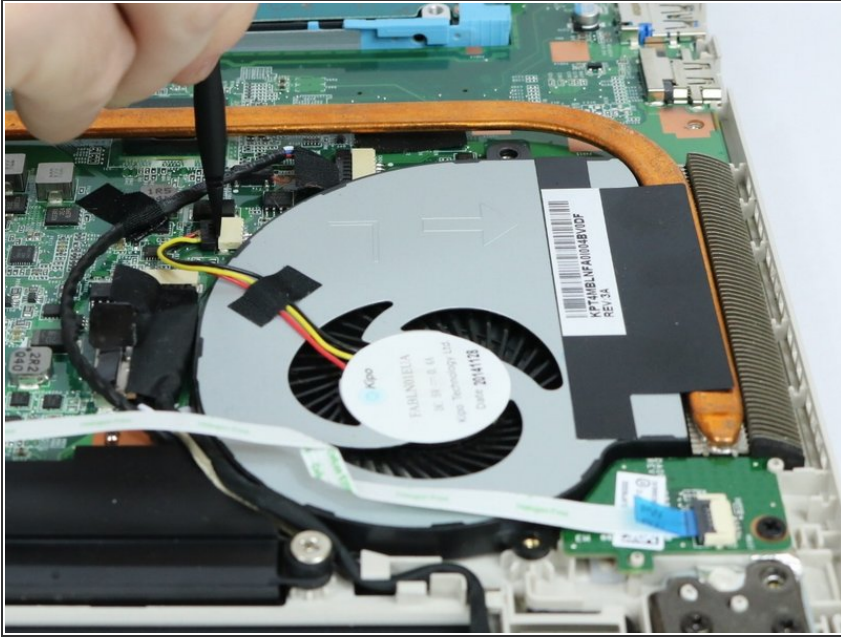
- Once all retaining tabs are released from the frame, you can pull up on the back cover to remove it.

## Step 6 — Cooling Fans



- Remove the two 3.5 mm Phillips #1 screws that hold the cooling fan in place.

## Step 7



- Wedge the flat end of the spudger between the connector and its socket.
- Twist back and forth in order to pry the connector loose from its socket.
- ⓘ Although you can pull on the connector wires to remove it from the socket, it is not recommended until the connector is loose to prevent damage to the wires.

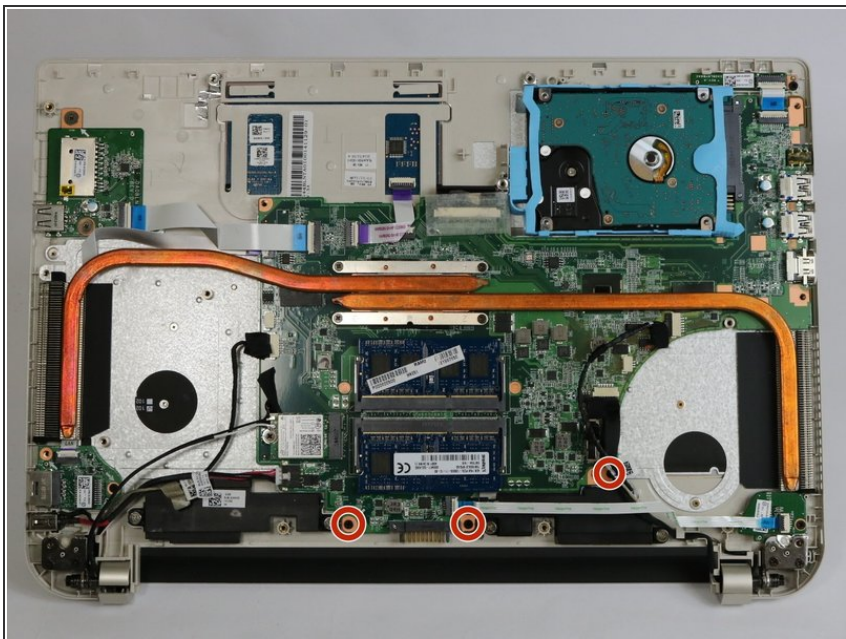
## Step 8



- Lift up on the cooling fan to remove it from the laptop.
- ⓘ Repeat steps 6-8 for the other cooling fan.

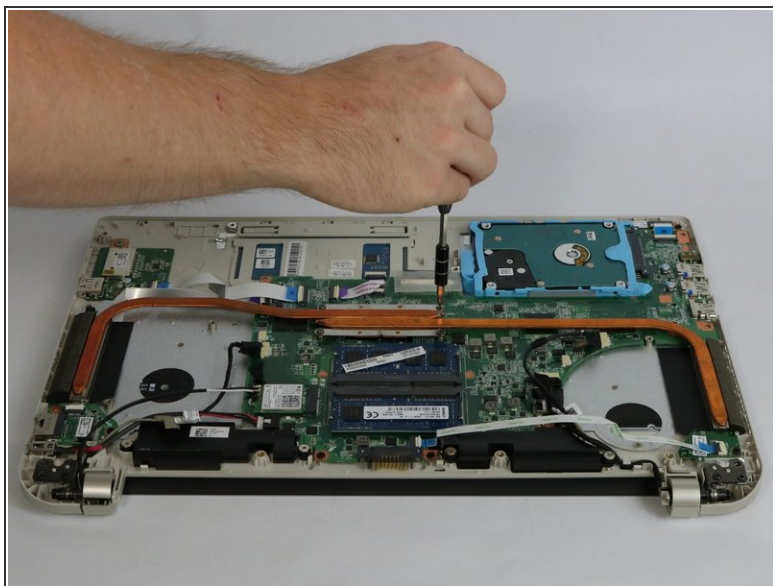
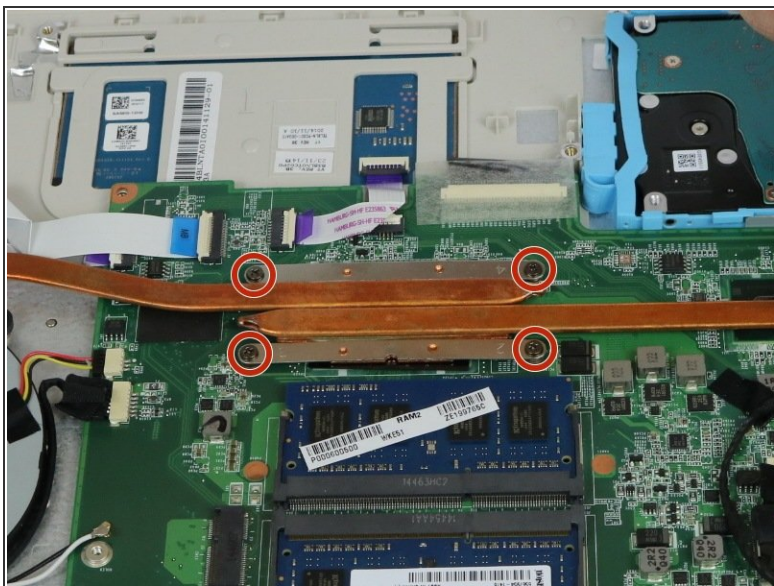


## Step 9 — Motherboard



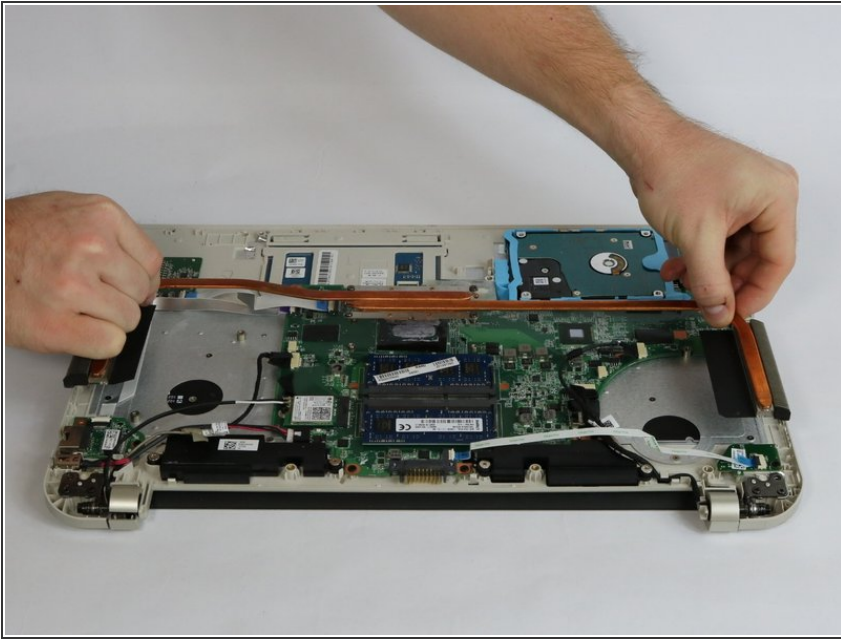
- Remove the three 4 mm Phillips #1 screws holding the motherboard in place.

## Step 10



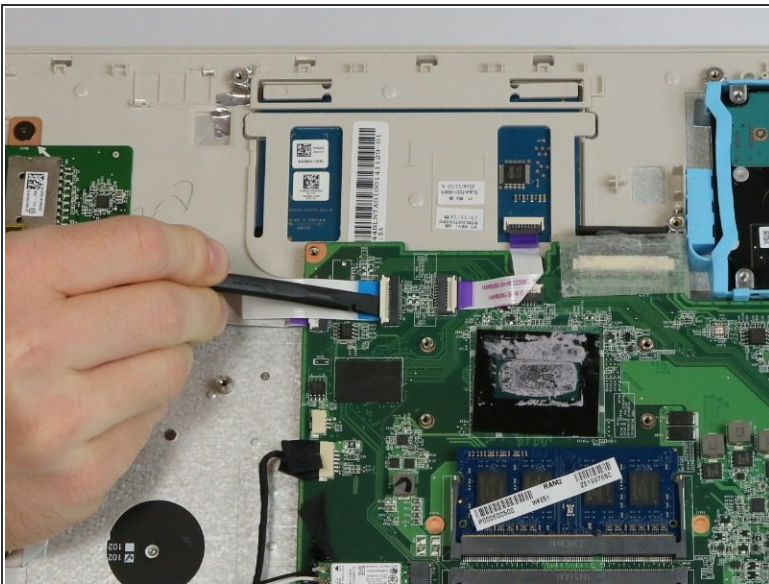
- Remove the four 4 mm Phillips #1 screws mounting the heat sink to the motherboard.

## Step 11



- Gently lift on either side of the heat sink to separate it from the laptop.
- ☑ When reassembling the device, be sure to [apply new thermal paste](#) to the heat sink and processor.

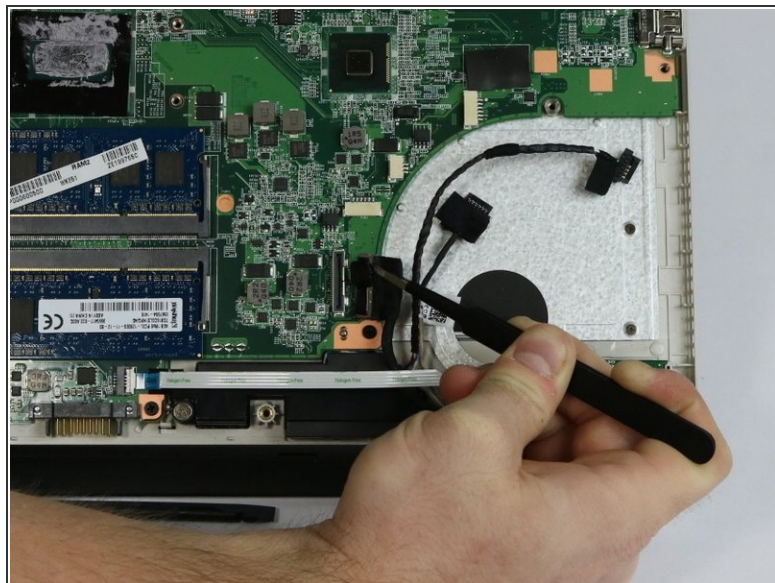
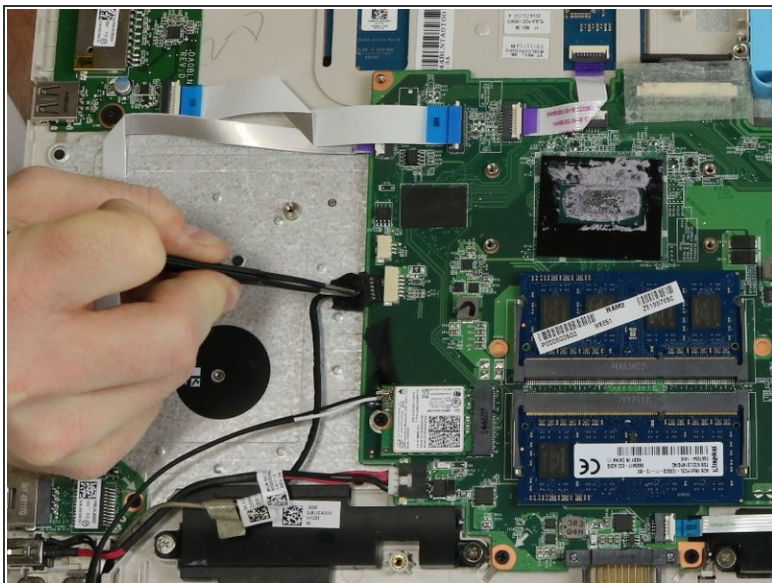
## Step 12



- On all ZIF (Zero Insertion Force) connectors, use a spudger to lift the lock.
- Use tweezers to pull on the designated pull tab to remove each ZIF connector.

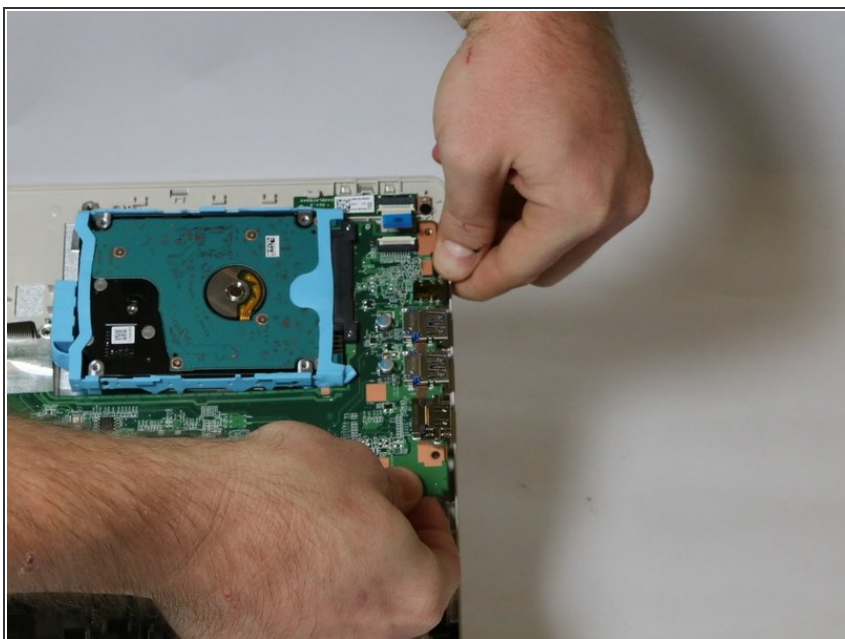


## Step 13



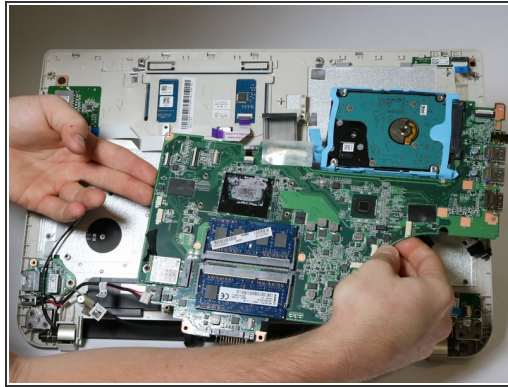
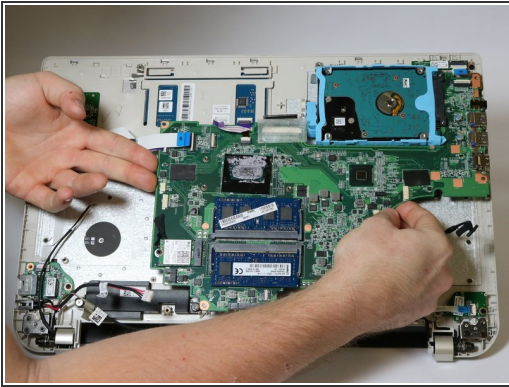
- On all No-Fuss Ribbon Cable Connectors use tweezers, on the designated tabs, to remove them.

## Step 14



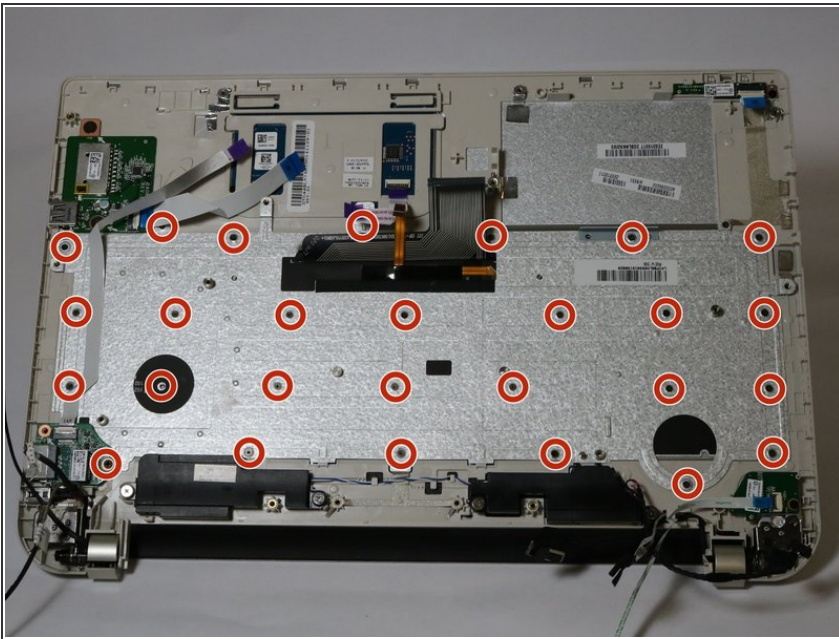
- Lift on the motherboard from the USB port area while pulling the frame away from motherboard.

## Step 15



- Once all connectors are separated from the motherboard and the USB port area is freed, carefully lift on either side of the motherboard to remove it.

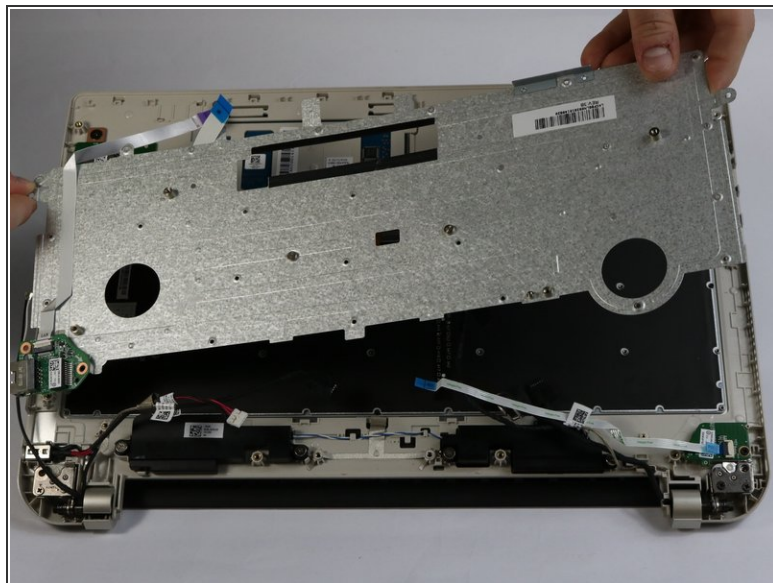
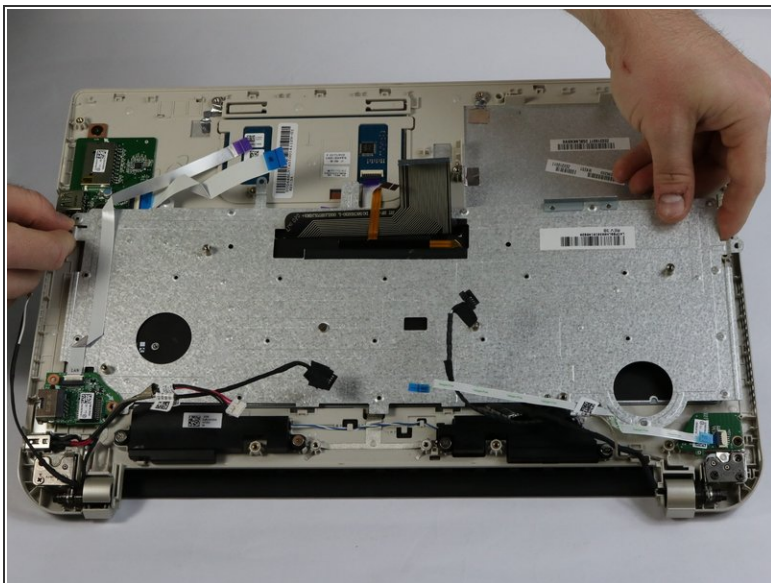
## Step 16 — Keyboard



- Remove the twenty-seven 2 mm Phillips #0 screws that secure the keyboard retaining plate.

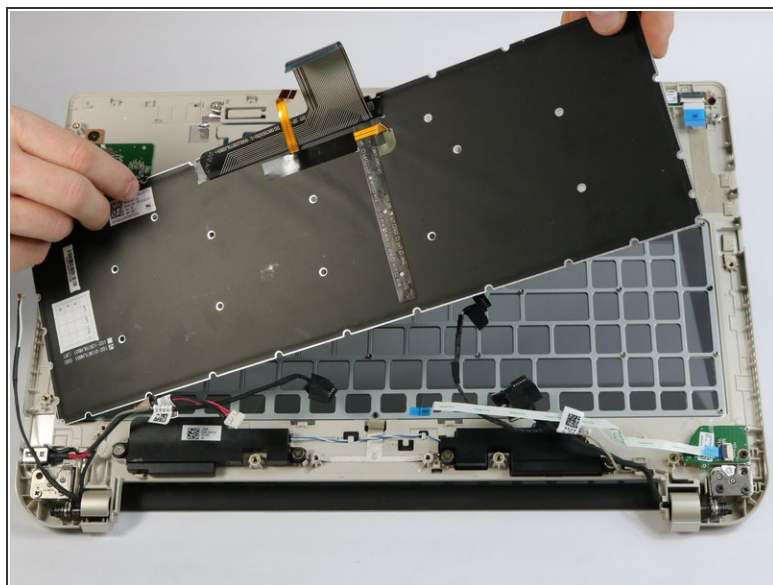
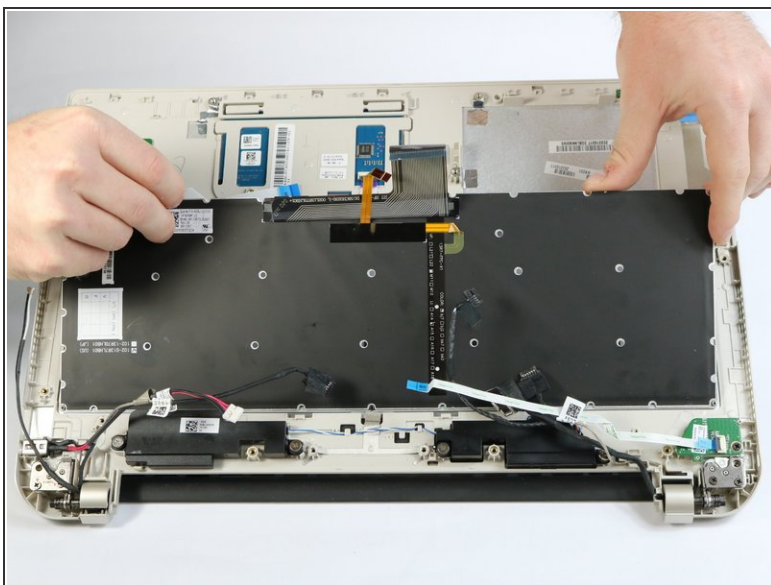


## Step 17



- Carefully lift the keyboard retaining plate away from the laptop making sure not to damage any connectors.

## Step 18



- Lift up on the keyboard to remove it from the laptop.



To reassemble your device, follow these instructions in reverse order.