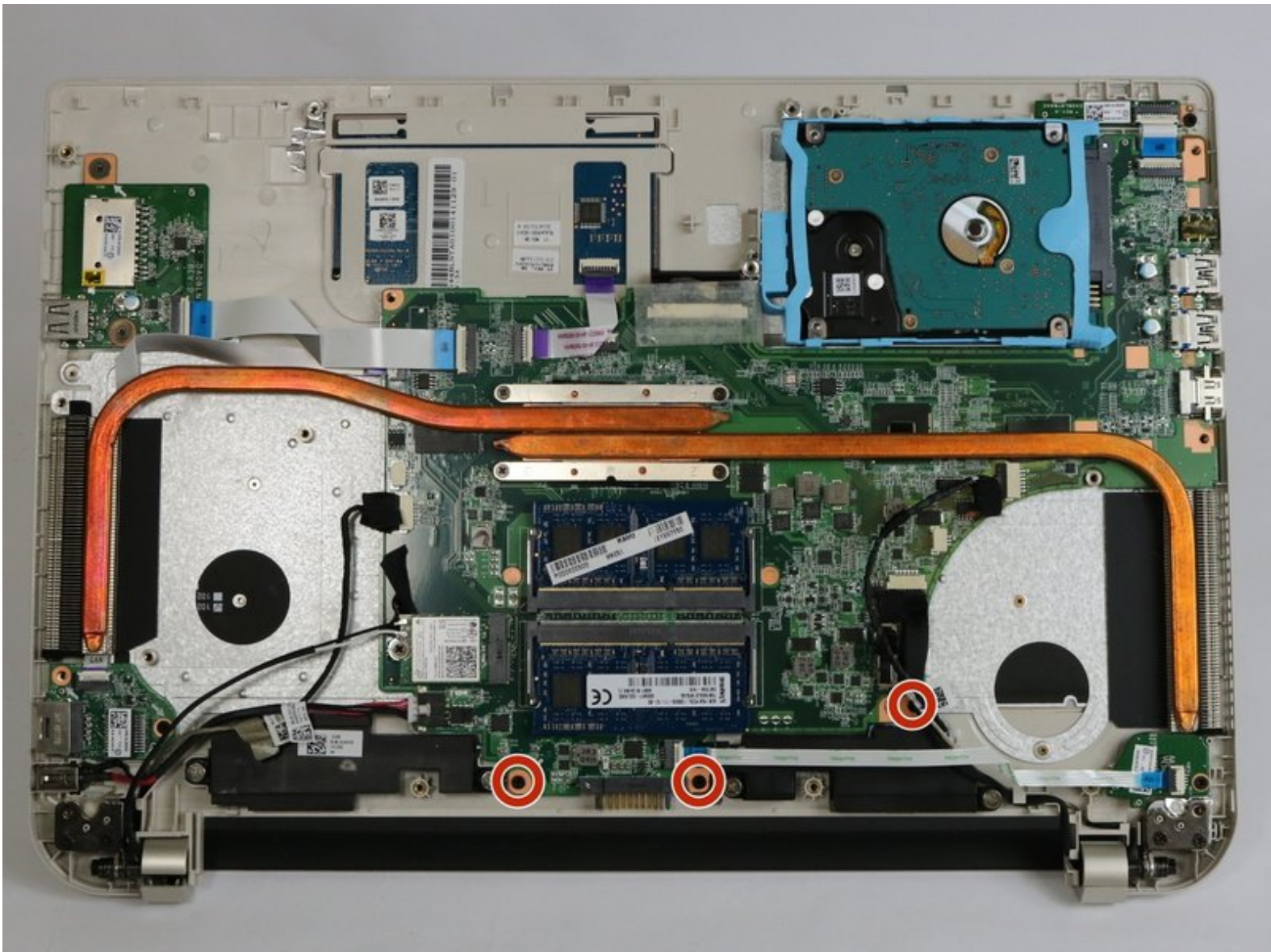




Toshiba Satellite S55T-B5335 Motherboard Replacement

This guide will walk you through the process of removing the motherboard of the Toshiba Satellite S55T-B5335.

Written By: George Gillespie



This document was generated on 2019-10-04 04:31:41 AM (MST).

INTRODUCTION

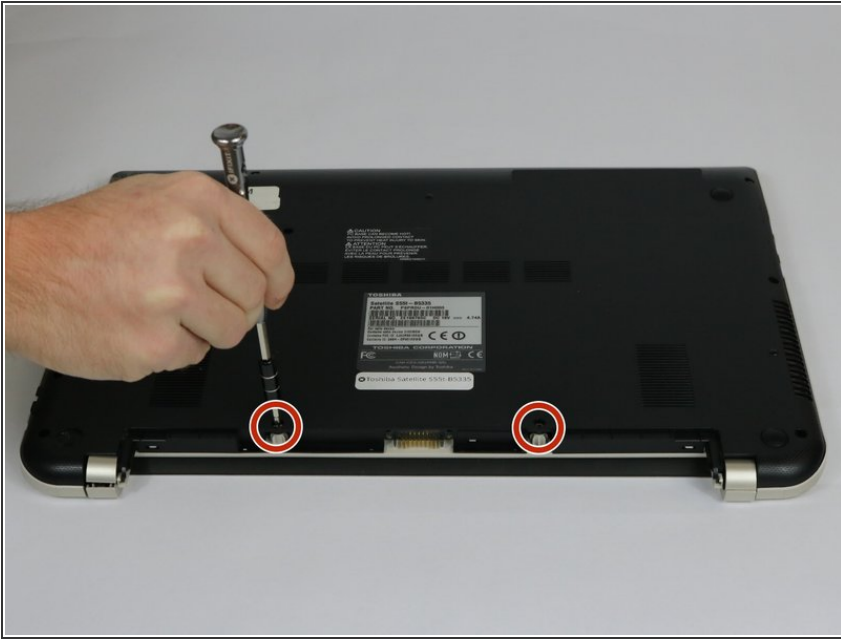
The motherboard is the main circuit board in which components of the computer (Wi-Fi adapter, touchpad, keyboard, cooling fans) are connected.



TOOLS:

- [Phillips #1 Screwdriver](#) (1)
 - [iFixit Opening Tools](#) (1)
 - [Heavy-Duty Spudger](#) (1)
 - [Tweezers](#) (1)
-

Step 1 — Battery



- Remove the two 7 mm Phillips #1 screws that hold the battery in place.

Step 2



- Pull the battery from laptop.

Step 3 — Bottom Cover



- Remove the ten 7 mm Phillips #1 screws that secure the back cover.

Step 4



- Wedge the tip of a plastic opening tool between the back cover and the metal frame.
- Twist the plastic opening tool, while wedged, in order to release the retaining tabs from the frame.
- Repeat these steps in a circular pattern around the laptop to release all retaining tabs.

Step 5



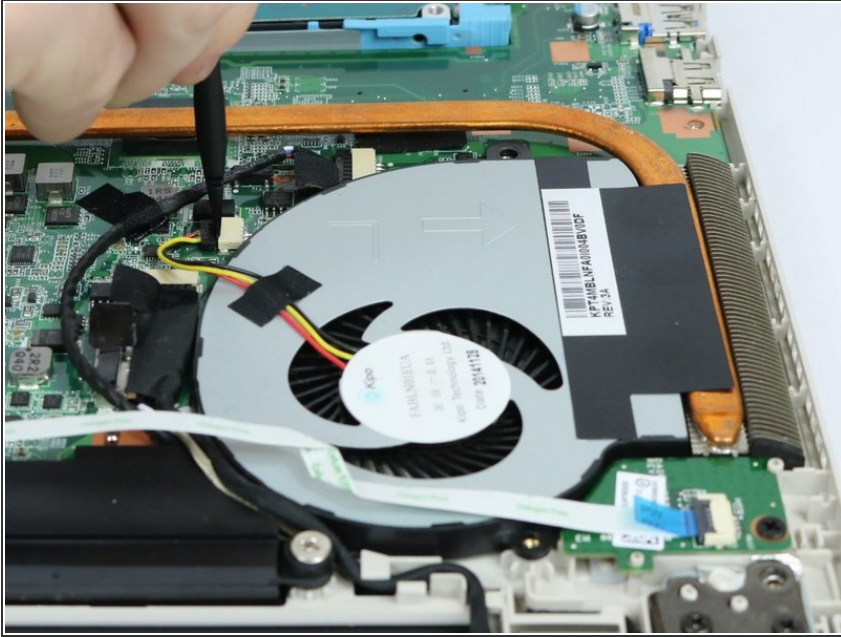
- Once all retaining tabs are released from the frame, you can pull up on the back cover to remove it.

Step 6 — Cooling Fans



- Remove the two 3.5 mm Phillips #1 screws that hold the cooling fan in place.

Step 7



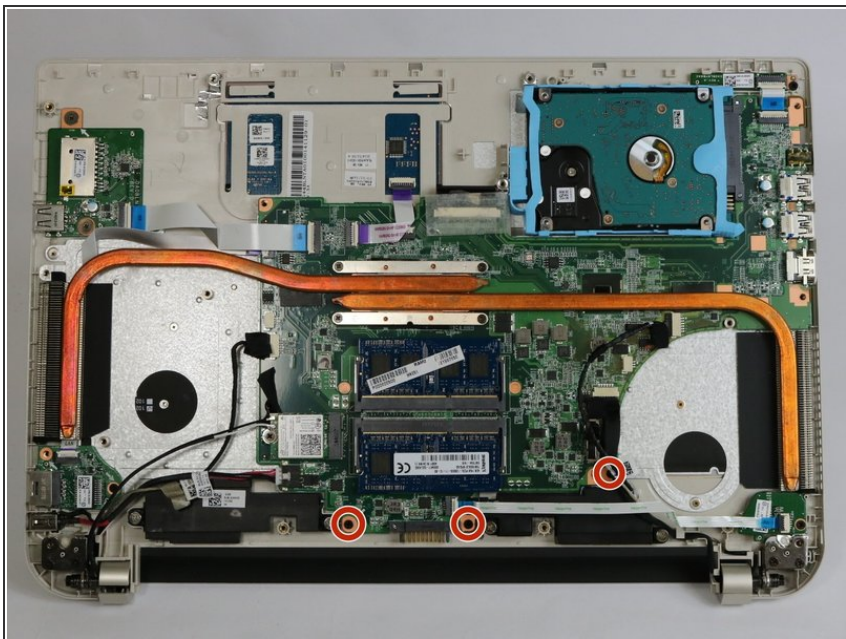
- Wedge the flat end of the spudger between the connector and its socket.
- Twist back and forth in order to pry the connector loose from its socket.
- ⓘ Although you can pull on the connector wires to remove it from the socket, it is not recommended until the connector is loose to prevent damage to the wires.

Step 8



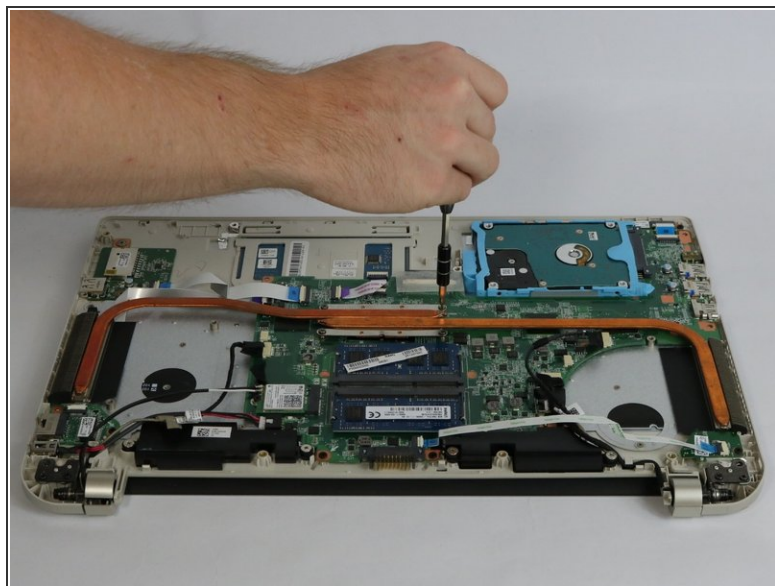
- Lift up on the cooling fan to remove it from the laptop.
- ⓘ Repeat steps 6-8 for the other cooling fan.

Step 9 — Motherboard



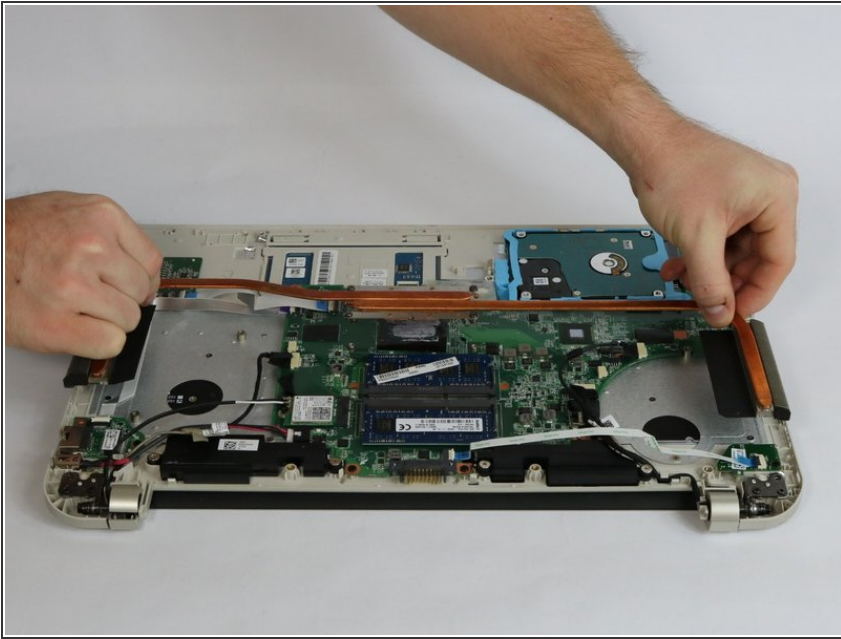
- Remove the three 4 mm Phillips #1 screws holding the motherboard in place.

Step 10



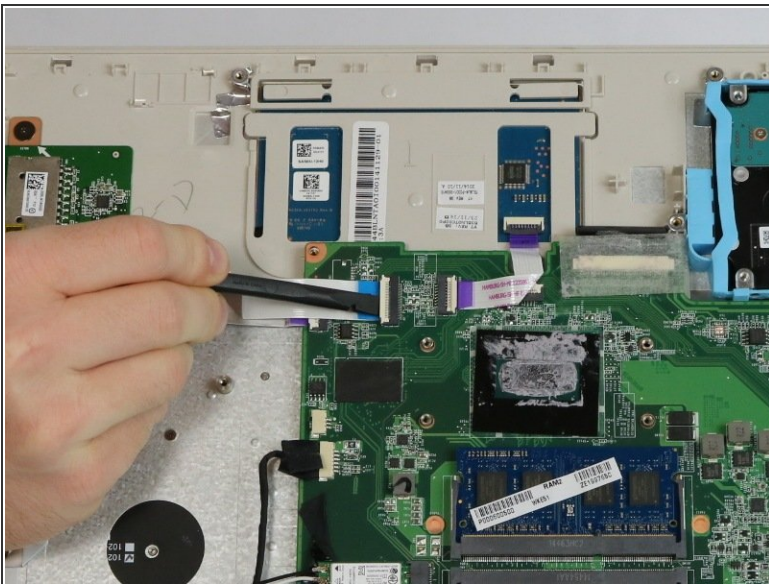
- Remove the four 4 mm Phillips #1 screws mounting the heat sink to the motherboard.

Step 11



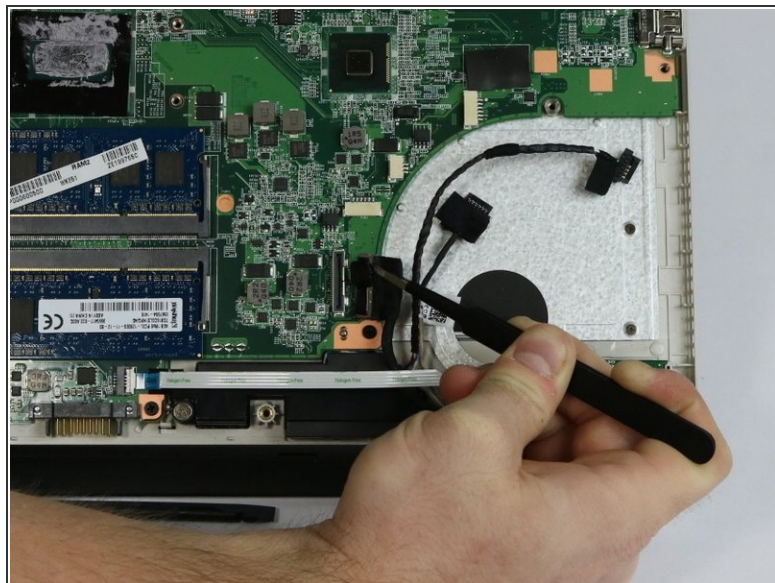
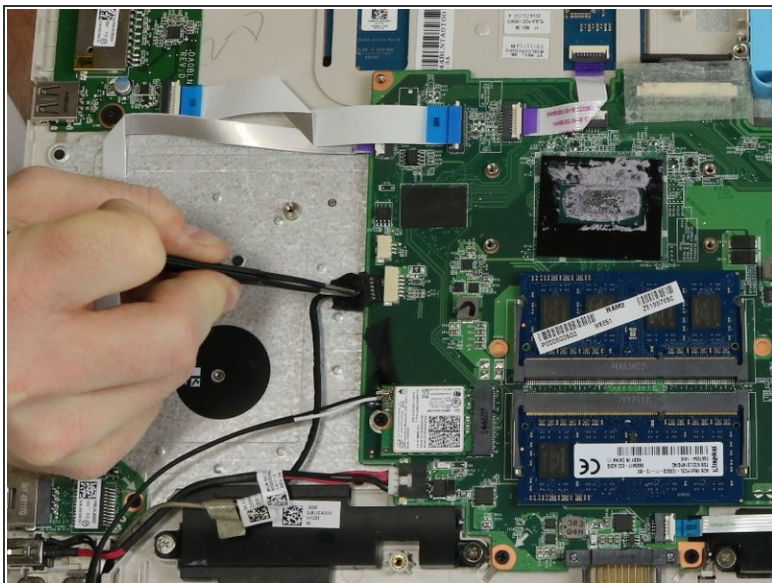
- Gently lift on either side of the heat sink to separate it from the laptop.
- ☑ When reassembling the device, be sure to [apply new thermal paste](#) to the heat sink and processor.

Step 12



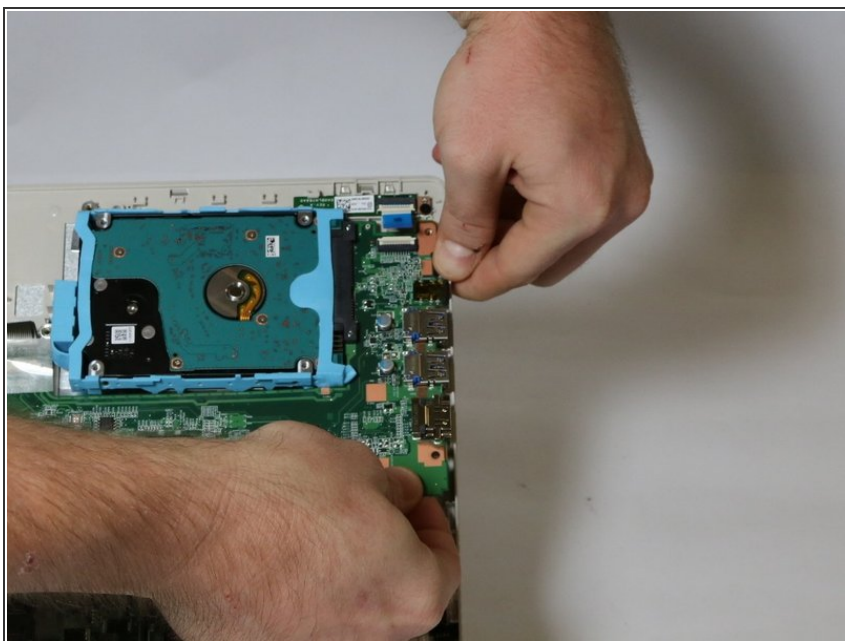
- On all ZIF (Zero Insertion Force) connectors, use a spudger to lift the lock.
- Use tweezers to pull on the designated pull tab to remove each ZIF connector.

Step 13



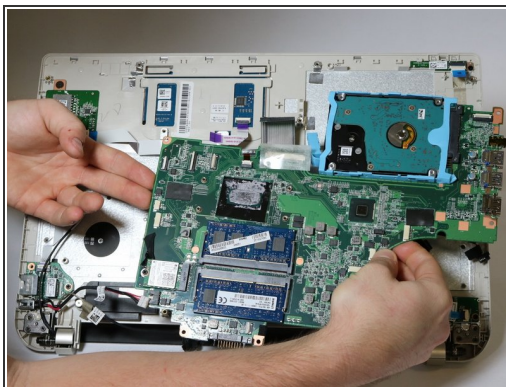
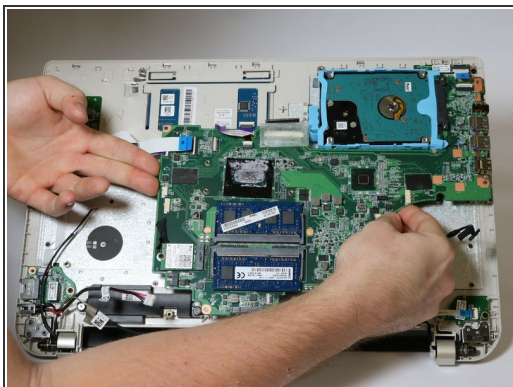
- On all No-Fuss Ribbon Cable Connectors use tweezers, on the designated tabs, to remove them.

Step 14



- Lift on the motherboard from the USB port area while pulling the frame away from motherboard.

Step 15



- Once all connectors are separated from the motherboard and the USB port area is freed, carefully lift on either side of the motherboard to remove it.

To reassemble your device, follow these instructions in reverse order.