



Toshiba Satellite S55t-A5389 Processor Replacement

The removal of the processor of the Toshiba Satellite S55t-A5389 that has a FCPGA946 socket, which allows it to use a number of different processors.

Written By: William Mazanec



This document was generated on 2019-09-28 11:07:44 PM (MST).

INTRODUCTION

If your laptop no longer runs as well as it did, and has become slow, unresponsive, or does not power on. You're processor may be at fault and replacing it could be an option. However before this is done, be sure to check your laptop for any viruses, or any other issues that it may have.



TOOLS:

- [iFixit Opening Tools](#) (1)
- [Phillips #0 Screwdriver](#) (1)
- [Magnetic Project Mat](#) (1)
- [Thermal Paste](#) (1)
- [T8 Torx Screwdriver](#) (1)



PARTS:

- [FCPGA946 Supported Processor](#) (1)

Step 1 — Battery



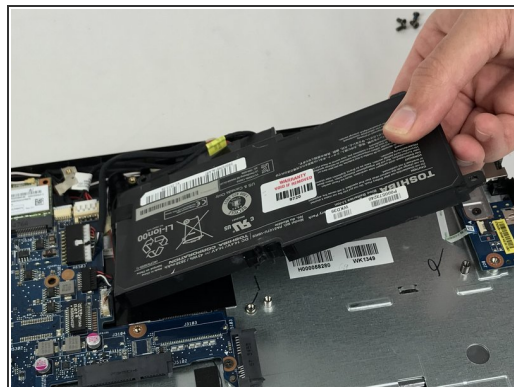
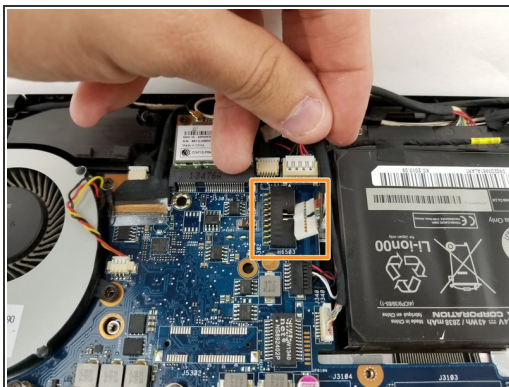
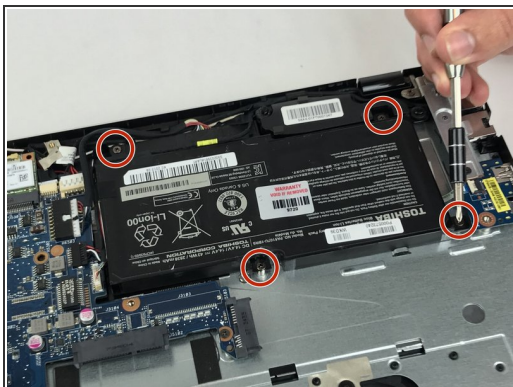
- Remove the fourteen 5mm Phillips #0 screws from the bottom of the laptop.

Step 2



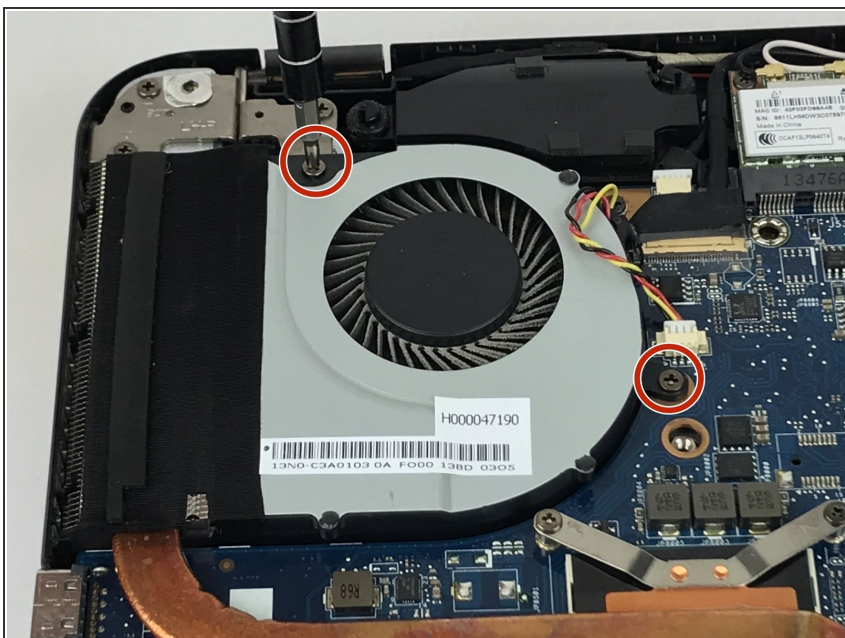
- Using the plastic prying tools, go around the edge of the bottom of the laptop to release the cover.

Step 3



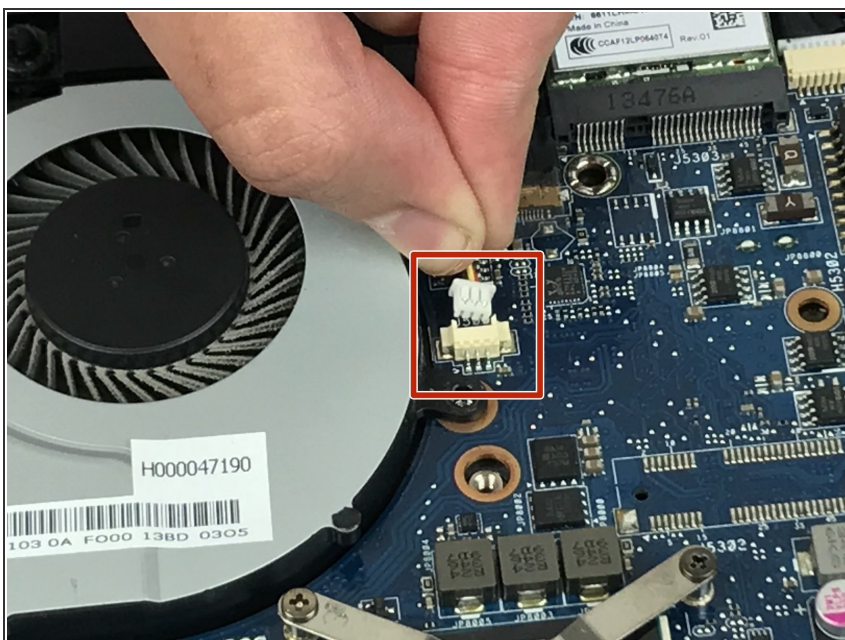
- Remove the four 5mm Phillips #0 screws from the battery.
- Unplug the battery from the motherboard.
- Remove the battery from the laptop.

Step 4 — Processor Fan



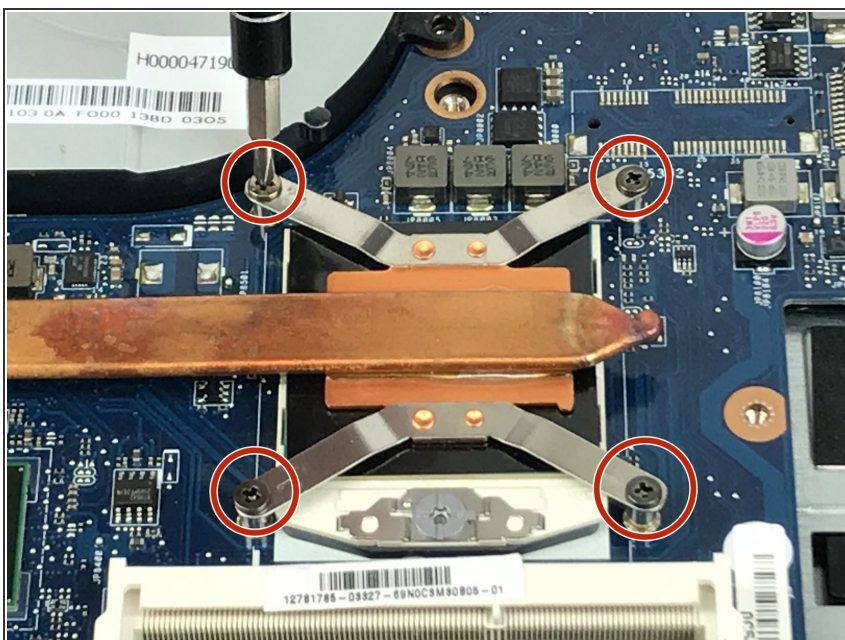
- Remove the two 5mm Phillips #0 screws from the fan.

Step 5



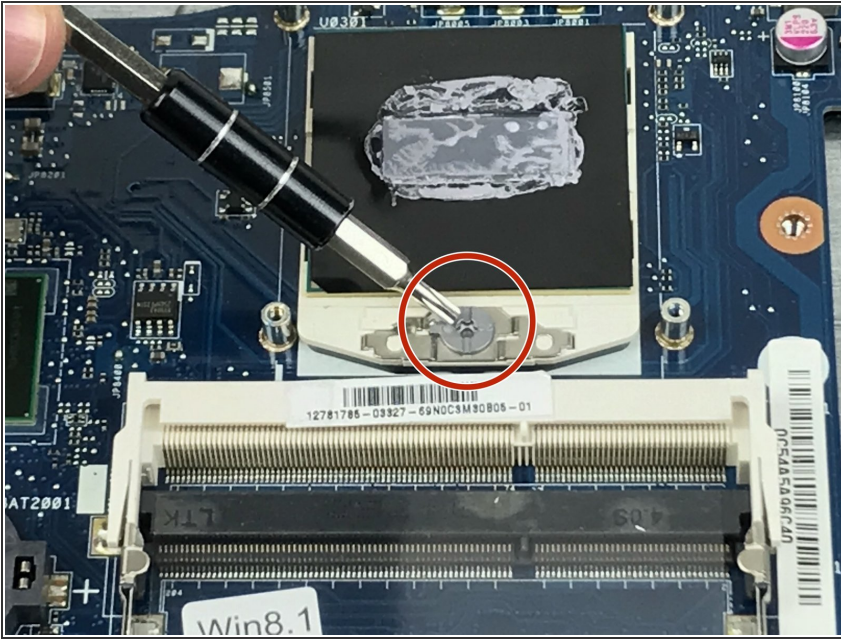
- Disconnect the fan from the motherboard.

Step 6



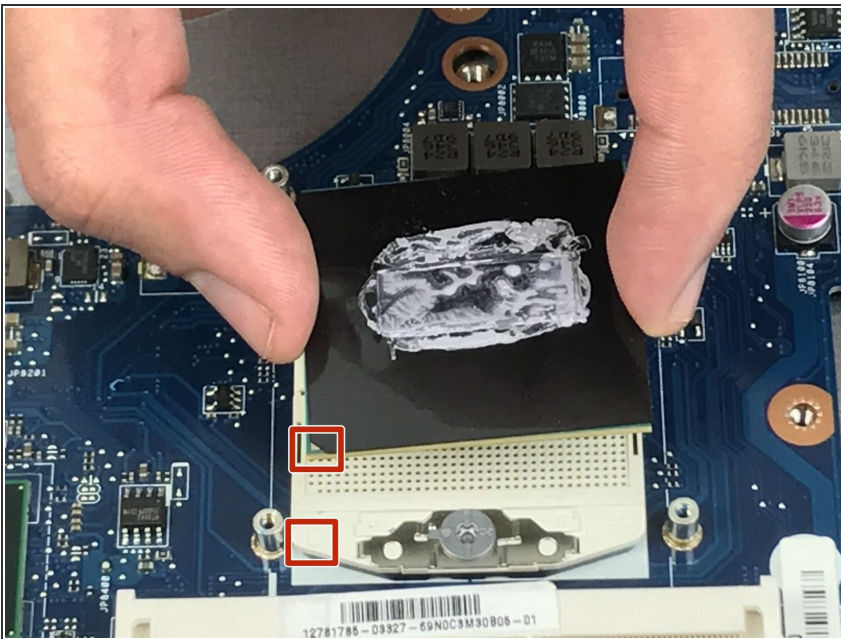
- Remove the four 5mm Phillips #0 screws from the heat pipe.
- Remove the fan and heat pipe from the laptop.

Step 7 — Processor



- Rotate the lock 90 degrees using a Torx T8 in order to remove the processor.

Step 8



- Carefully lift up the processor.
- ⚠ When putting the new processor on, make sure that the little arrow on the processor matches with the arrow on the socket

To reassemble your device, follow these instructions in reverse order.