



Toshiba Satellite S55t-A5389 RAM

Replacement

How to remove and properly replace DDR3L-1333 4GB RAM cards for the Toshiba Satellite S55t-A5389 laptop.

Written By: William Mazanec



INTRODUCTION

If you find that your laptop is sluggish when many programs are running, freezing, or randomly restarting. It may be time to add more RAM or replace the RAM currently in the laptop.



TOOLS:

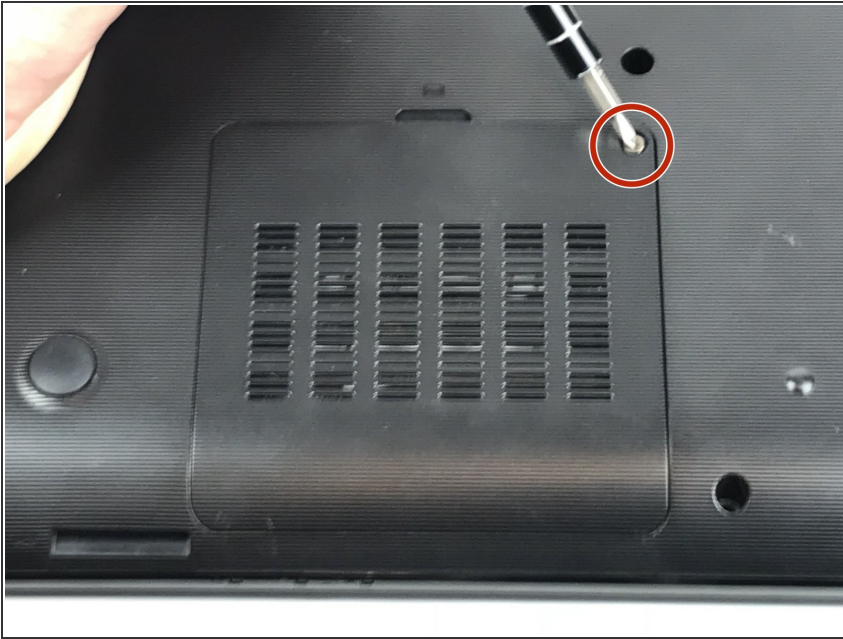
- [Phillips #0 Screwdriver](#) (1)



PARTS:

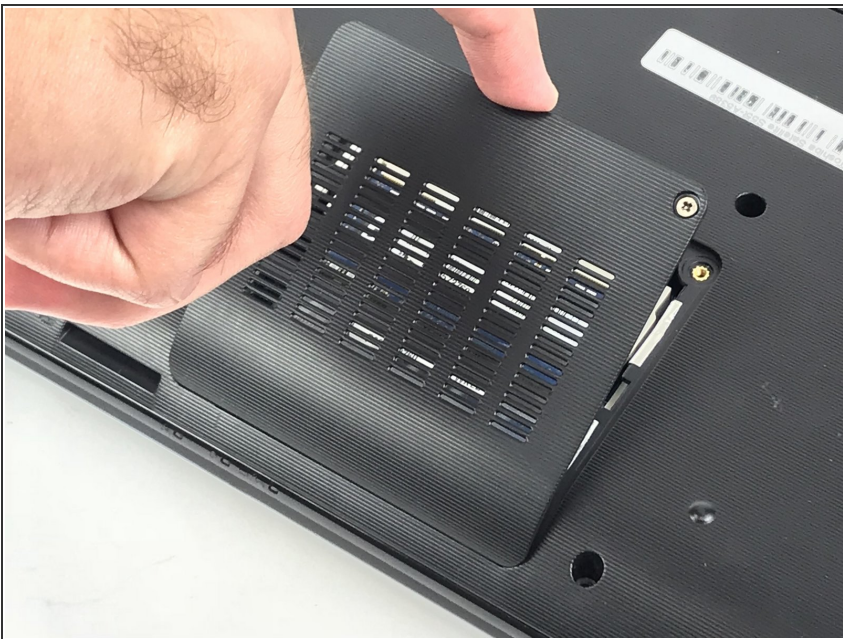
- [DDR3L-1333 4GB RAM](#) (2)

Step 1 — RAM



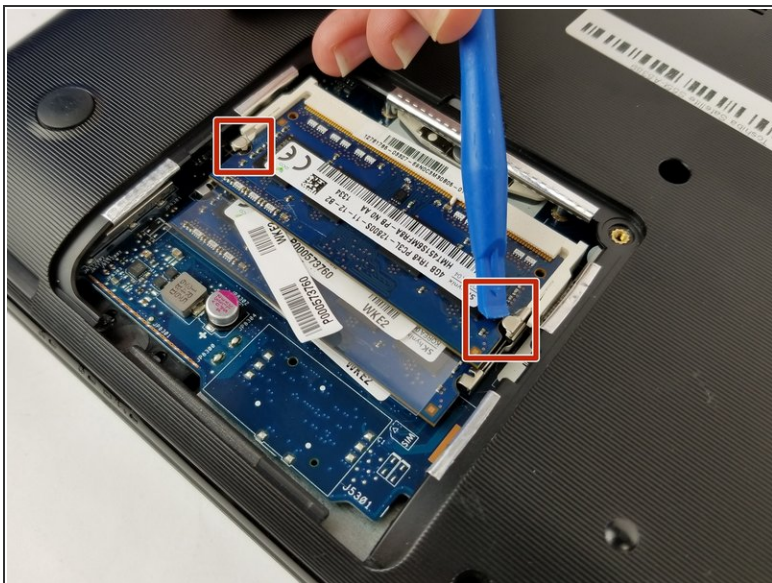
- Unscrew the single Phillips #0 screw from the RAM panel.

Step 2



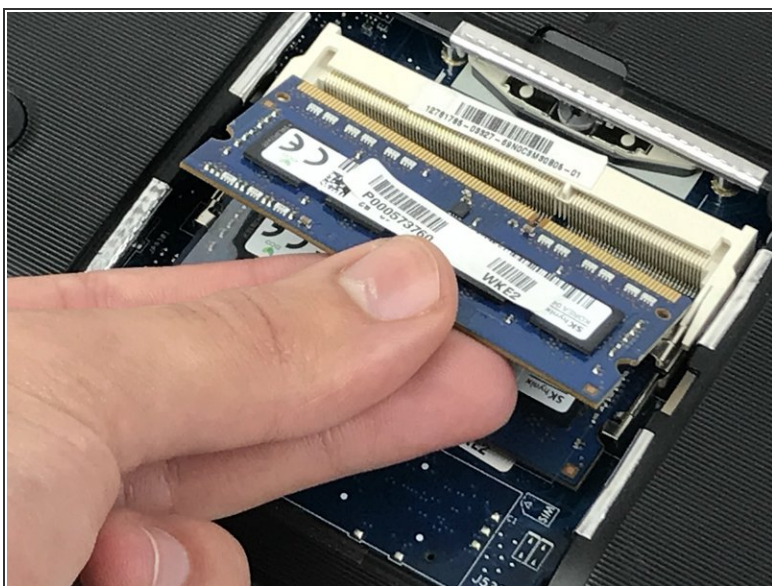
- Remove the panel.

Step 3



- Spread the clips away from the RAM module.
- ⓘ When released, the RAM module will pop up at a slight angle.

Step 4



- Lift the RAM module to an angle of about 30 degrees and slide it out.

To reassemble your device, follow these instructions in reverse order.

When installing the new RAM, push the RAM sticks in at an angle. Proceed to push each RAM stick down until the latches click, indicating that it is locked in.