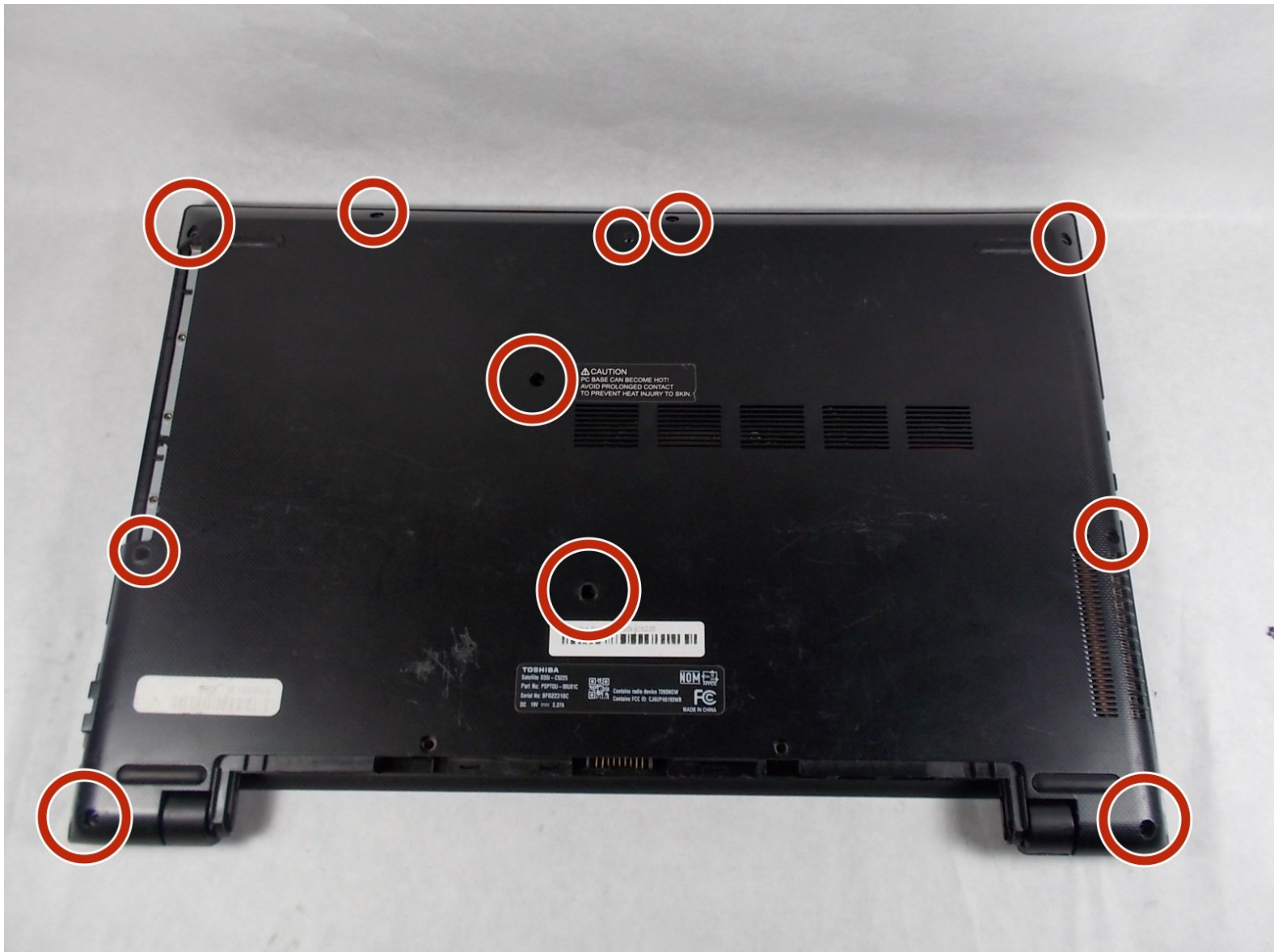




Toshiba Satellite S55t-C5225 Back Panel Replacement

Replace the back panel of your Toshiba Satellite S55t-C5225.

Written By: Sarah Westberg



INTRODUCTION

If you need to access the internals of your Toshiba Satellite S55t-C5225, follow this guide. Be sure to remove the battery prior to beginning any work on the device.




TOOLS:

- [iFixit Opening Tools](#) (1)
 - [Phillips #0 Screwdriver](#) (1)
-

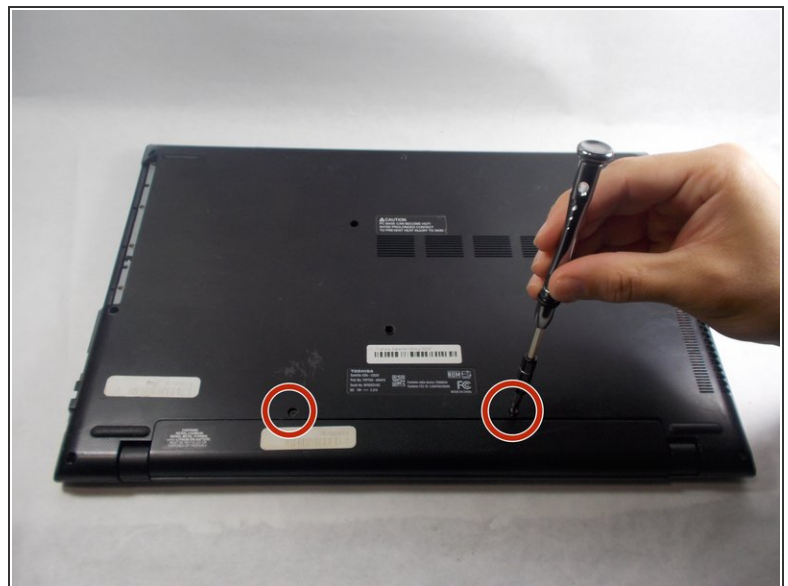
Step 1 — Battery



 Shut down the computer and disconnect all cables

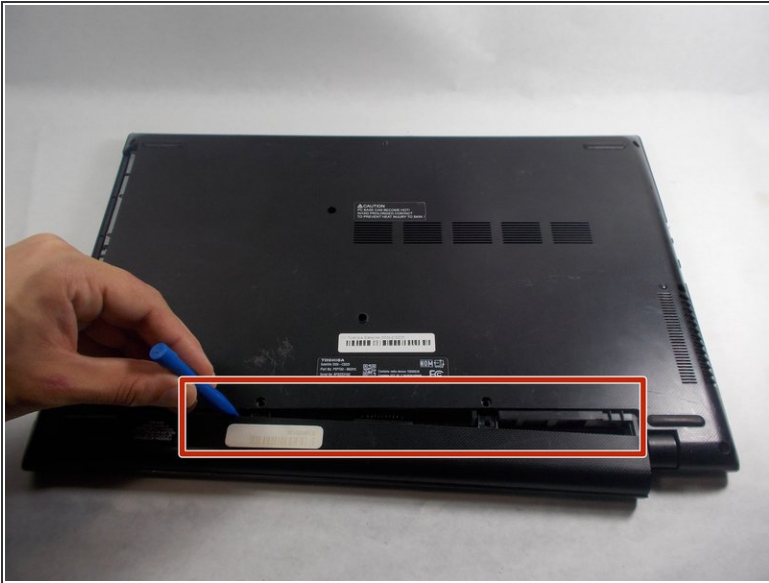
- Flip the computer over so the bottom is facing up.

Step 2



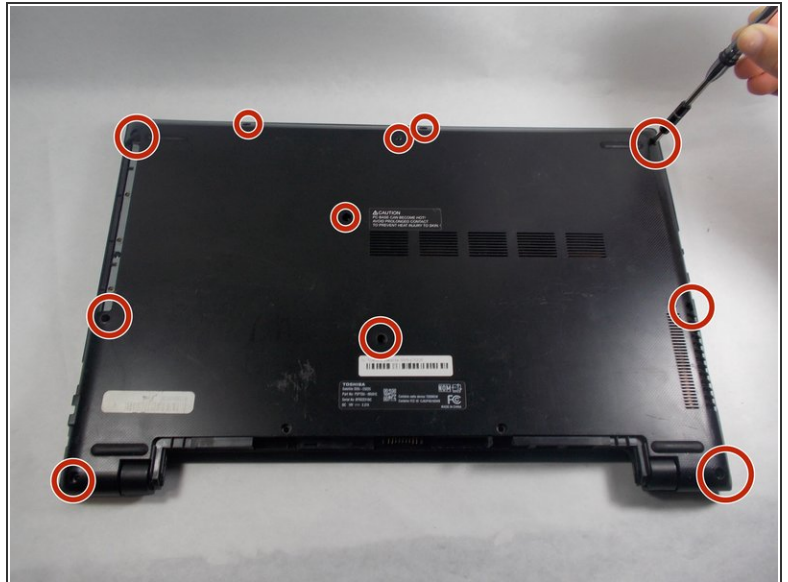
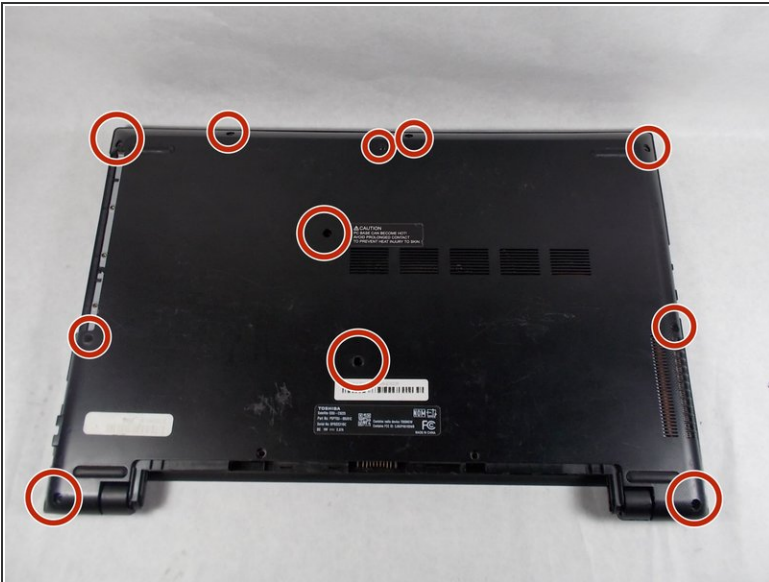
- Remove the two 7.0 mm Phillips #0 screws that hold the battery in place.

Step 3



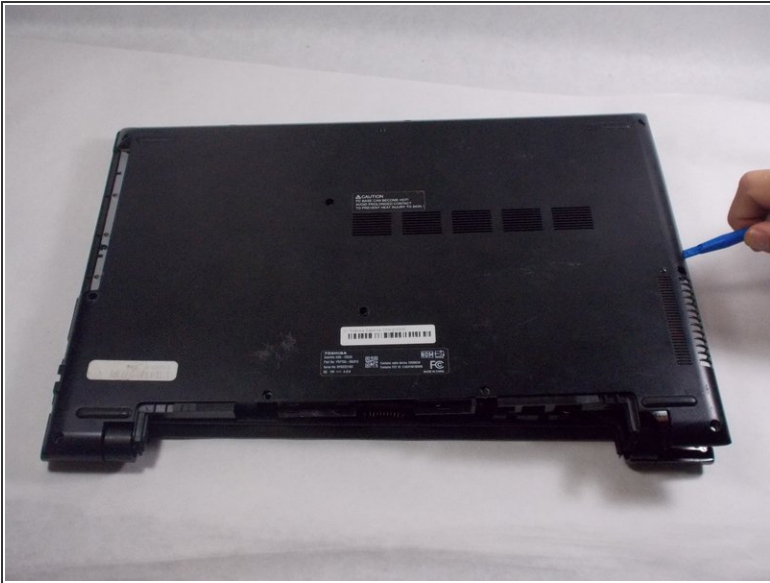
- Carefully remove the battery by wedging a plastic opening tool in-between the battery and back cover.

Step 4 — Back Panel



- Remove the eleven 7.0 mm Phillips #0 screws that secure the back cover.

Step 5



- Wedge the tip of a plastic opening tool between the back cover and metal frame.
- Twist the plastic tool, while wedged, to release the retaining tabs from the frame.
- Repeat these steps around the laptop to release all retaining tabs.

Step 6



- Once all retaining tabs are released, pull up on the cover to remove.

To reassemble your device, follow these instructions in reverse order.