



Toshiba Satellite S55t-C5225 Battery Replacement

This guide will help the reader replace the battery of the Toshiba Satellite S55t-C5225.

Written By: Ali Mortada



INTRODUCTION

If your Toshiba S55t-C5225 can no longer hold a charge, it most likely has a dead battery and will require a battery replacement. A working battery provides power to your laptop.

Make sure to turn off your device before starting the battery replacement guide.



TOOLS:

- [iFixit Opening Tools](#) (1)
 - [Phillips #0 Screwdriver](#) (1)
-

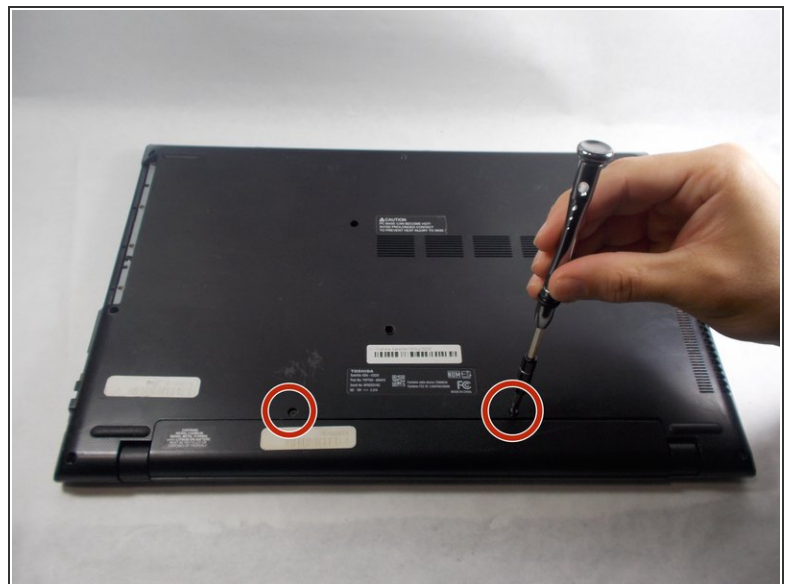
Step 1 — Battery



⚠ Shut down the computer and disconnect all cables

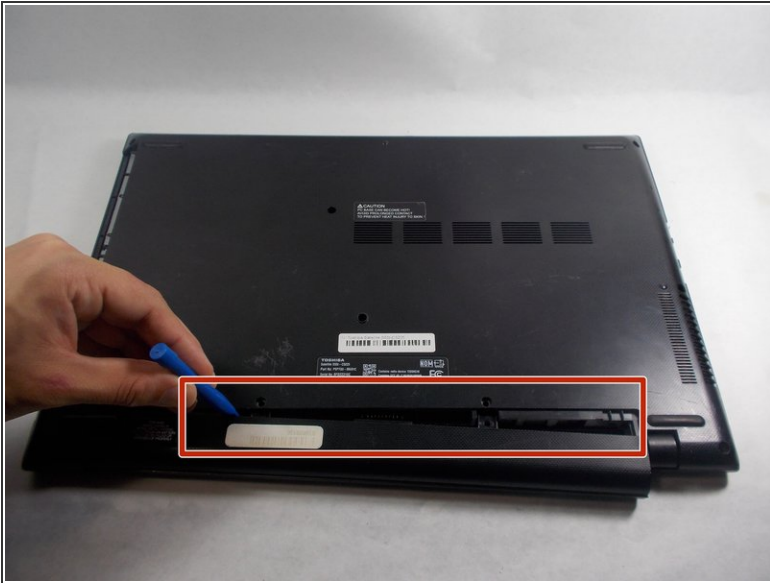
- Flip the computer over so the bottom is facing up.

Step 2



- Remove the two 7.0 mm Phillips #0 screws that hold the battery in place.

Step 3



- Carefully remove the battery by wedging a plastic opening tool in-between the battery and back cover.

To reassemble your device, follow these instructions in reverse order.