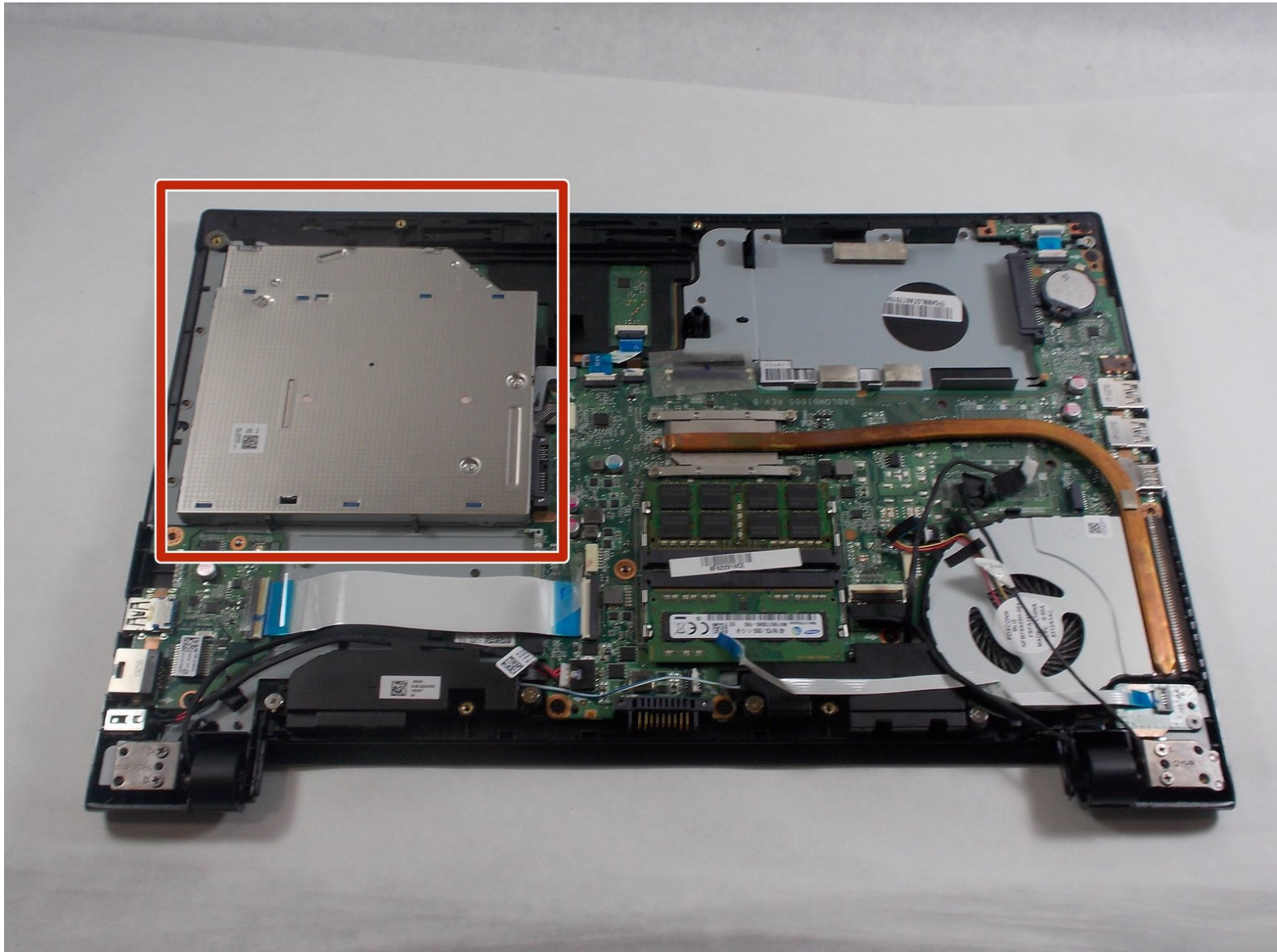




Toshiba Satellite S55t-C5225 Optical Disk Drive Replacement

How to replace the optical disk drive in a Toshiba Satellite S55t-C5225.

Written By: Nicholas Costa



INTRODUCTION

If your Toshiba S55t-C5225 can no longer read CD's/DVD's or will not open then your optical disk drive is most likely not operational and needs to be replaced. The following steps are a guide to help the user in replacing the optical disk drive.



TOOLS:

- [Phillips #0 Screwdriver](#) (1)
 - [iFixit Opening Tools](#) (1)
-

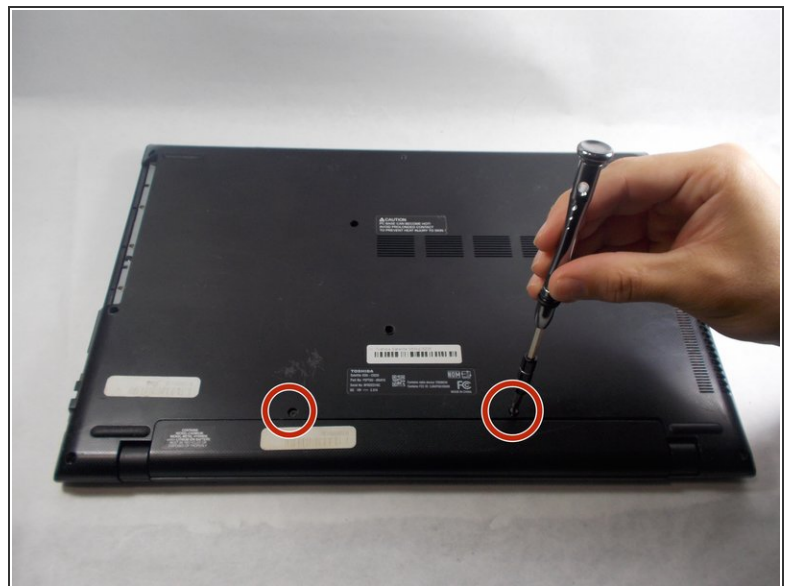
Step 1 — Battery



⚠ Shut down the computer and disconnect all cables

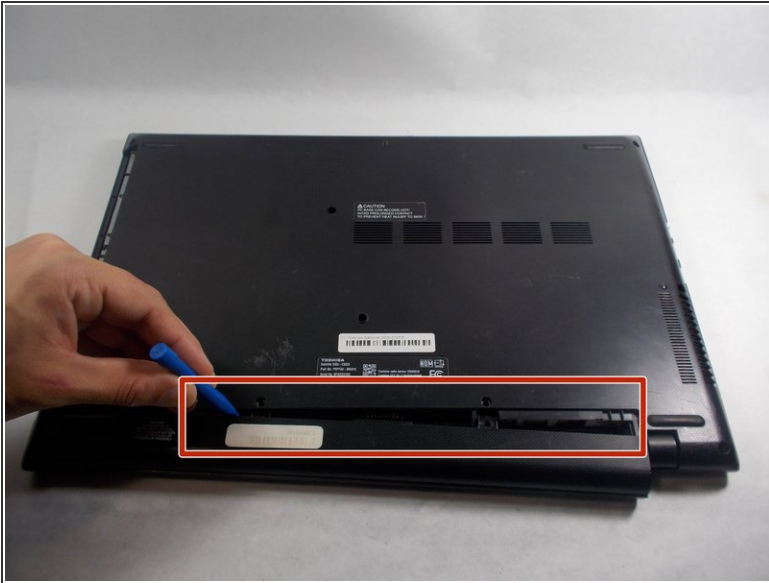
- Flip the computer over so the bottom is facing up.

Step 2



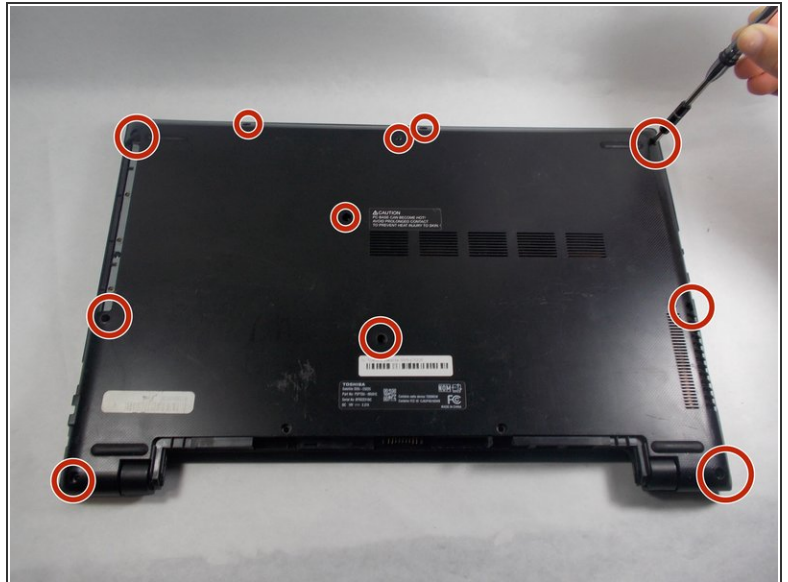
- Remove the two 7.0 mm Phillips #0 screws that hold the battery in place.

Step 3



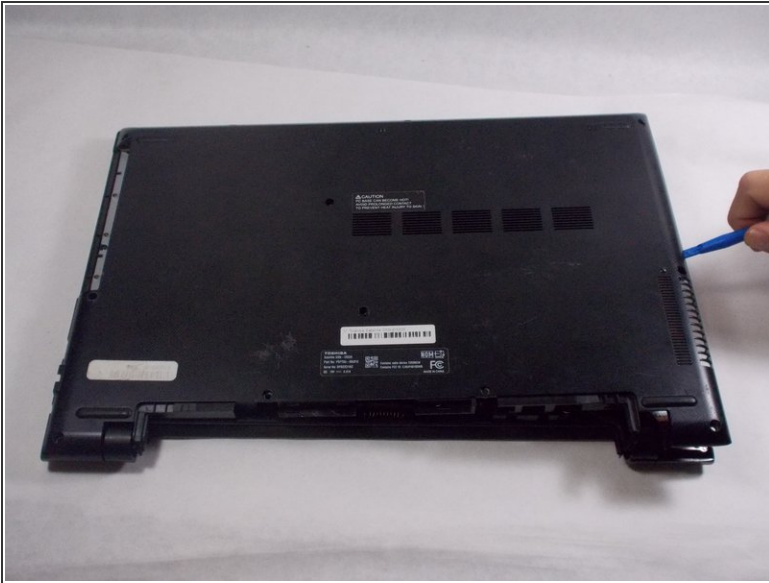
- Carefully remove the battery by wedging a plastic opening tool in-between the battery and back cover.

Step 4 — Back Panel



- Remove the eleven 7.0 mm Phillips #0 screws that secure the back cover.

Step 5



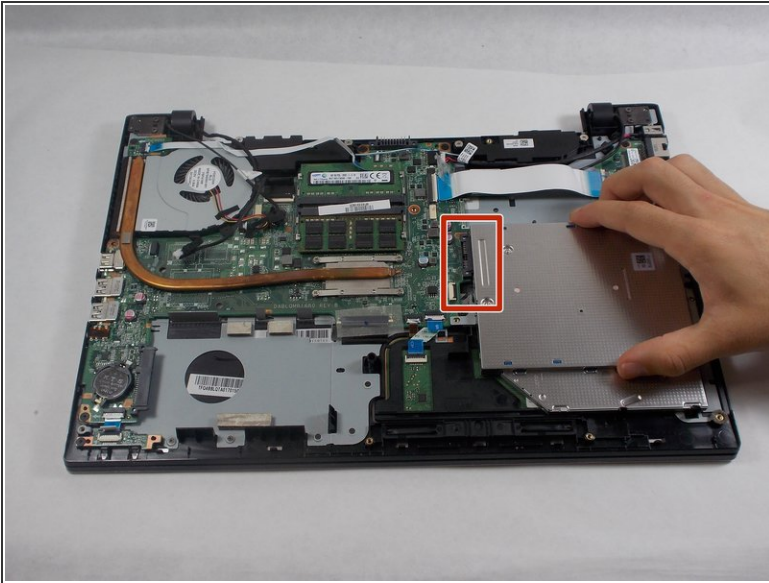
- Wedge the tip of a plastic opening tool between the back cover and metal frame.
- Twist the plastic tool, while wedged, to release the retaining tabs from the frame.
- Repeat these steps around the laptop to release all retaining tabs.

Step 6



- Once all retaining tabs are released, pull up on the cover to remove.

Step 7 — Optical Disk Drive



- Carefully slide the optical disk drive to the right to remove from the motherboard.

To reassemble your device, follow these instructions in reverse order.