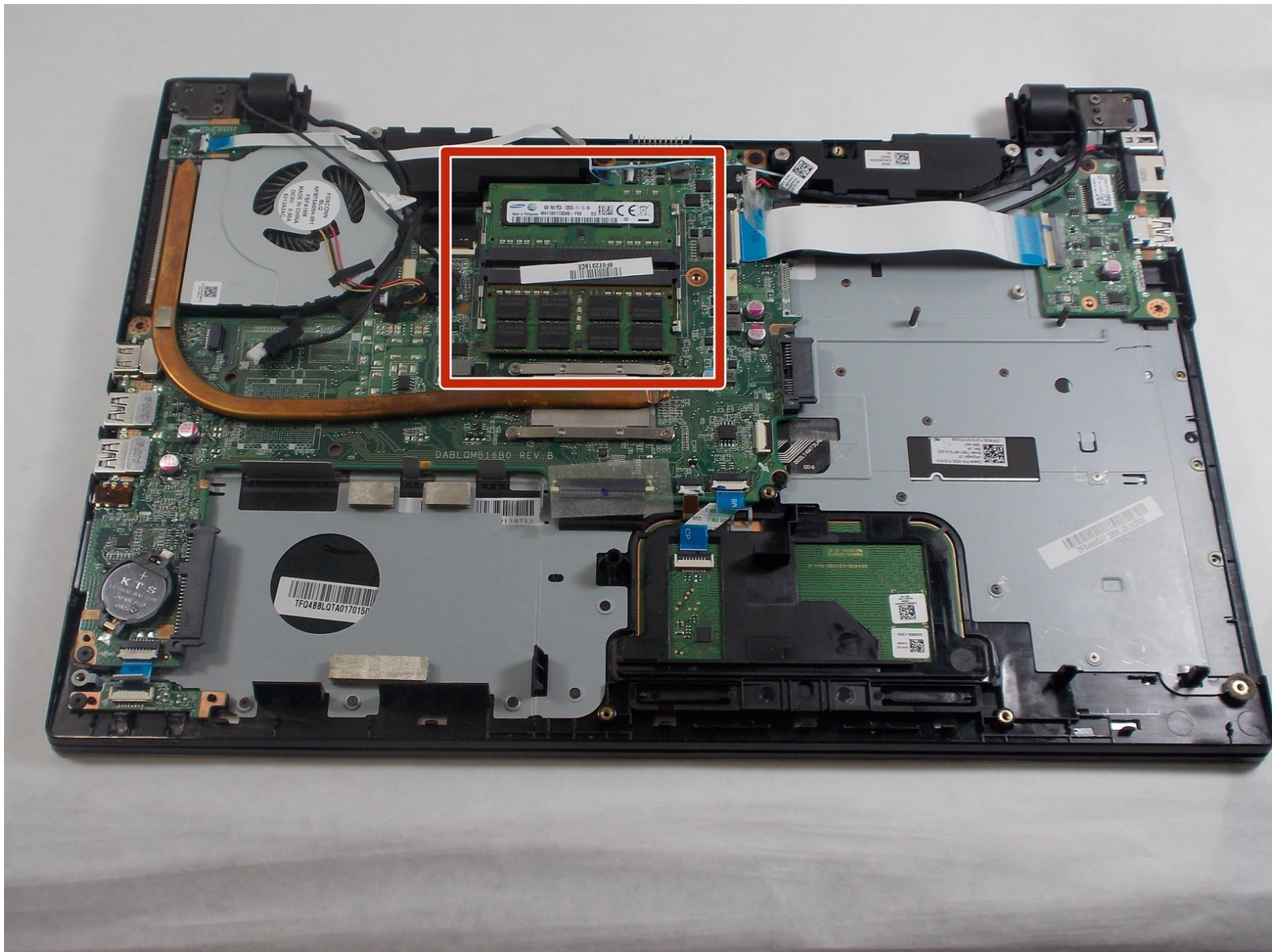




Toshiba Satellite S55t-C5225 RAM Replacement

This guide will show the reader how to correctly replace the RAM of your Toshiba Satellite S55t-C5225.

Written By: Javien Delgado



INTRODUCTION

If your Toshiba Satellite S55t-C5225 shuts down abruptly, performance is low, or fails to install new programs then the RAM most likely needs to be replaced. The following guide will walk the user through replacing the RAM in your Toshiba Satellite S55t-C5225.



TOOLS:

- [Phillips #0 Screwdriver](#) (1)
 - [iFixit Opening Tools](#) (1)
-

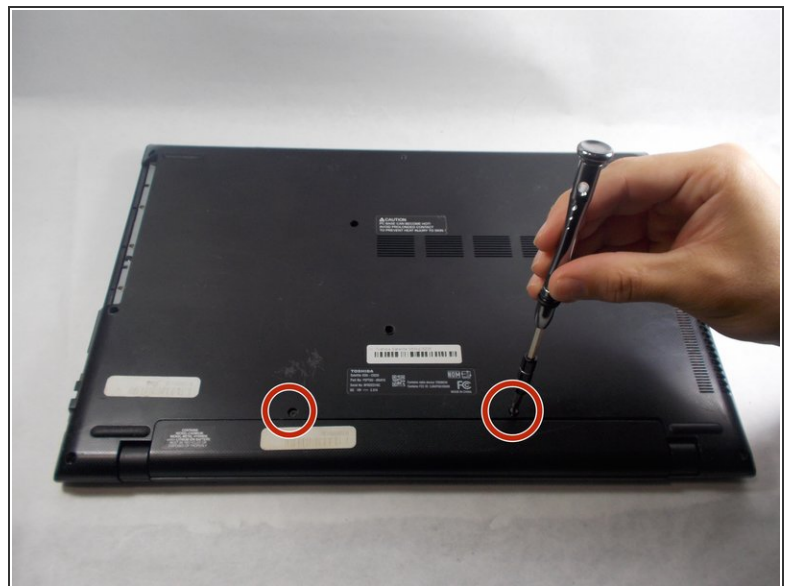
Step 1 — Battery



⚠ Shut down the computer and disconnect all cables

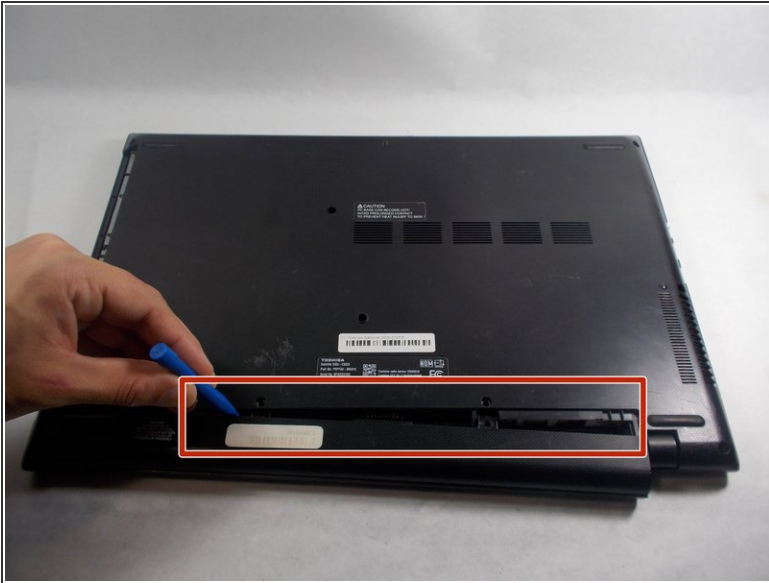
- Flip the computer over so the bottom is facing up.

Step 2



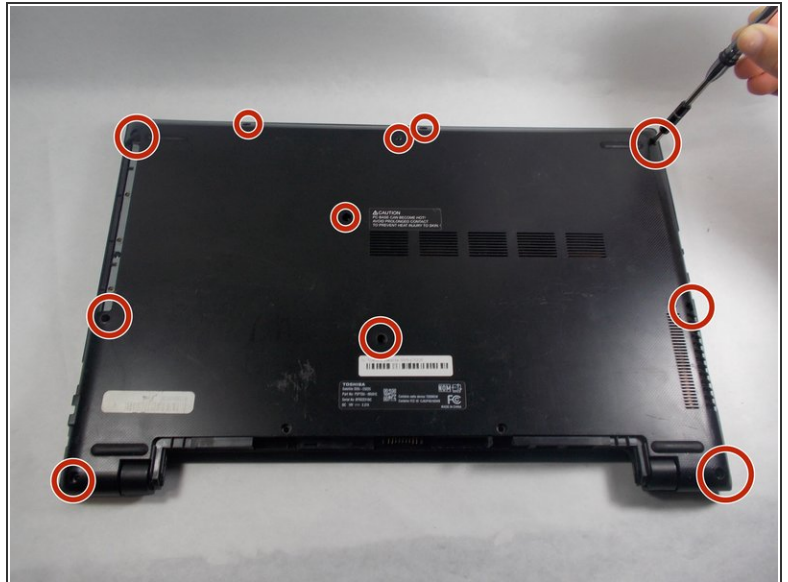
- Remove the two 7.0 mm Phillips #0 screws that hold the battery in place.

Step 3



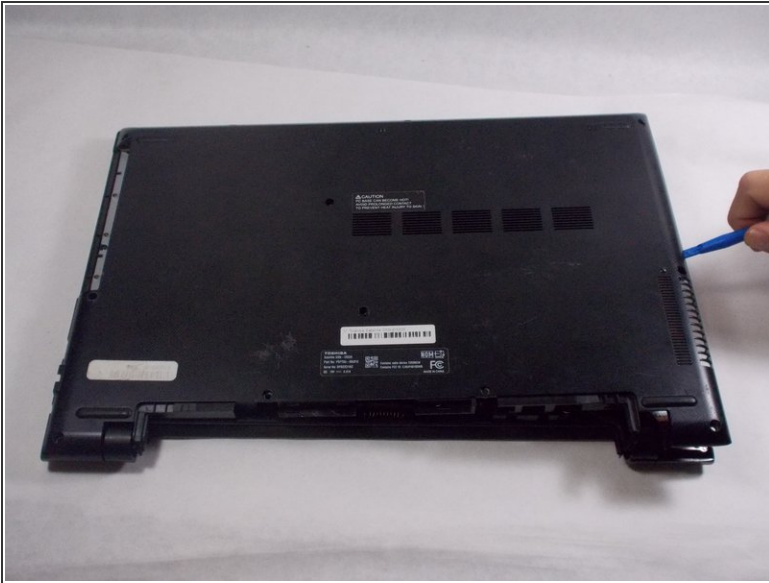
- Carefully remove the battery by wedging a plastic opening tool in-between the battery and back cover.

Step 4 — Back Panel



- Remove the eleven 7.0 mm Phillips #0 screws that secure the back cover.

Step 5



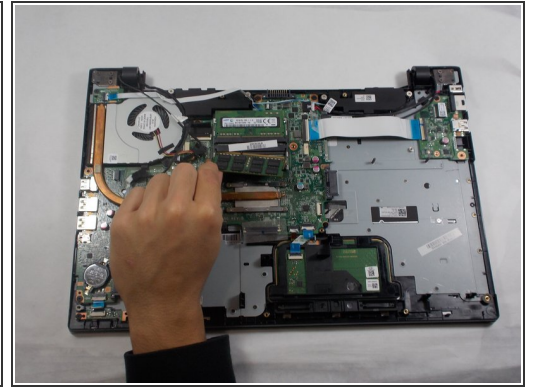
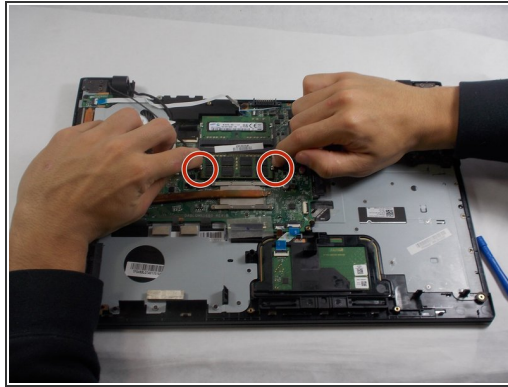
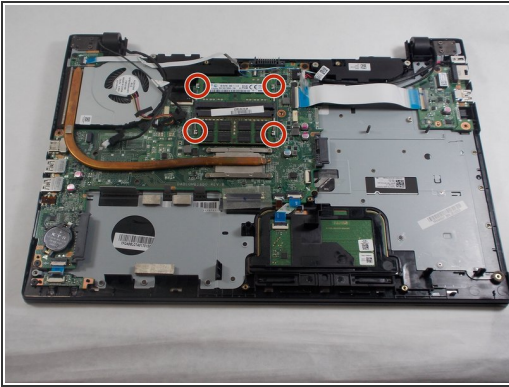
- Wedge the tip of a plastic opening tool between the back cover and metal frame.
- Twist the plastic tool, while wedged, to release the retaining tabs from the frame.
- Repeat these steps around the laptop to release all retaining tabs.

Step 6



- Once all retaining tabs are released, pull up on the cover to remove.

Step 7 — RAM



- Press on the metals clips on the outside of the RAM to release it.
- Gently pull out the first RAM stick. Repeat the process for the other RAM stick.

To reassemble your device, follow these instructions in reverse order.