



Toshiba Satellite S55t-C5225 Screen Assembly Replacement

This guide will show the reader how to properly replace the screen of your Toshiba Satellite S55t-C5225.

Written By: Javien Delgado



This document was generated on 2020-04-06 04:48:02 AM (MST).

INTRODUCTION

If your Toshiba Satellite S55t-C5225 is experiencing quality errors in the screen or visible damage then the screen might need to be replaced. This replacement guide should be followed if you are experiencing the problems mentioned above.



TOOLS:

- [Phillips #0 Screwdriver](#) (1)
 - [iFixit Opening Tools](#) (1)
-

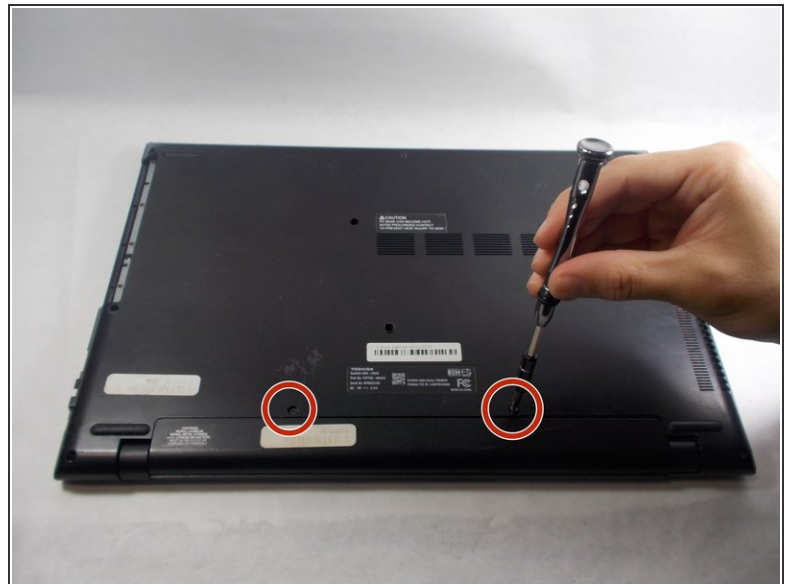
Step 1 — Battery



⚠ Shut down the computer and disconnect all cables

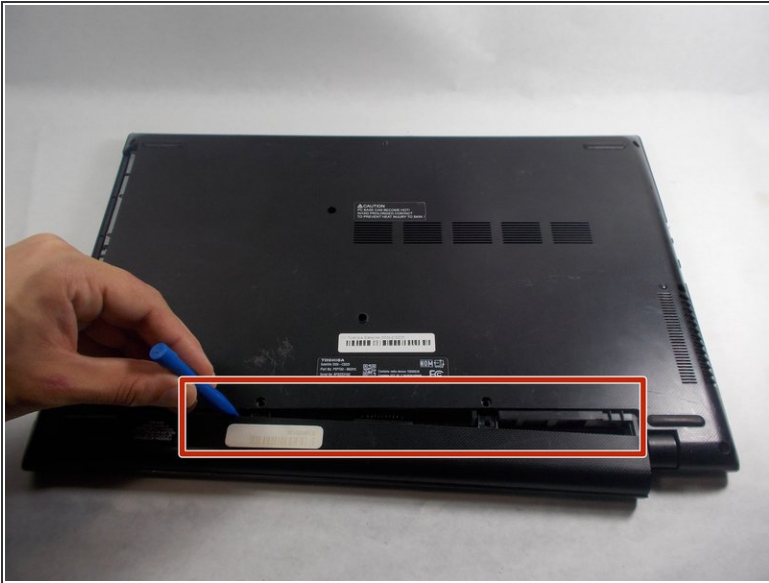
- Flip the computer over so the bottom is facing up.

Step 2



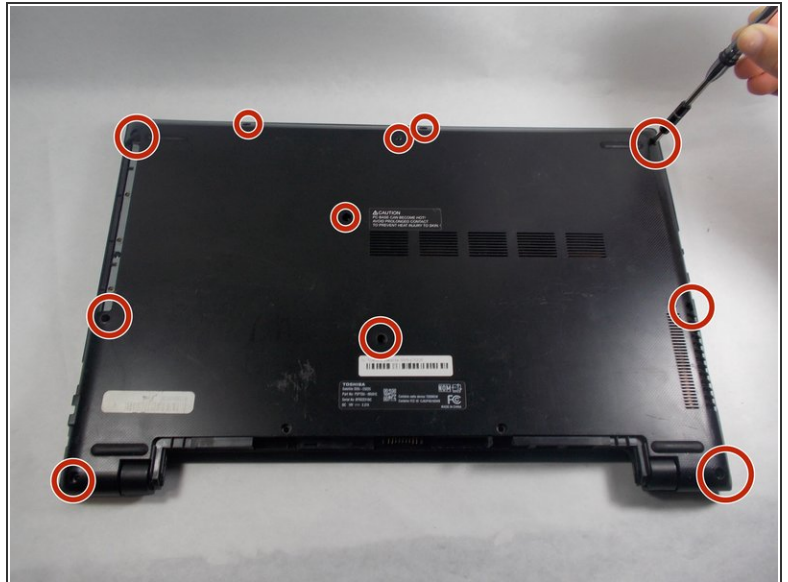
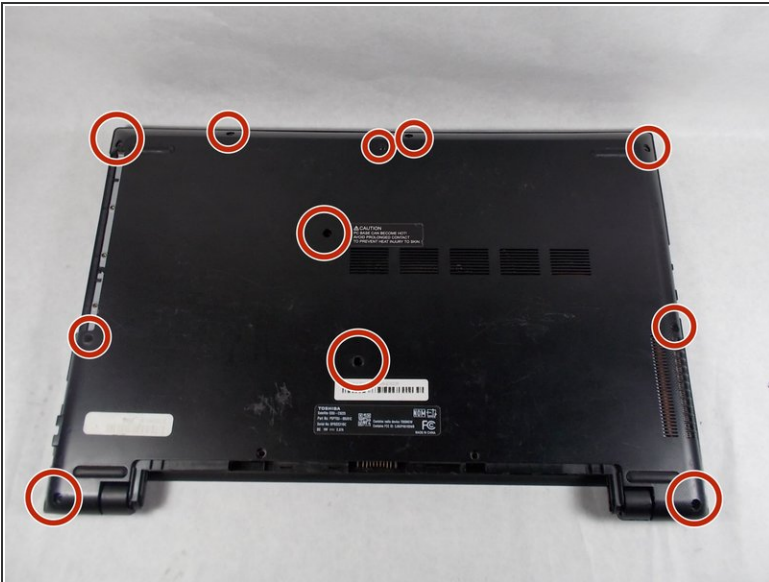
- Remove the two 7.0 mm Phillips #0 screws that hold the battery in place.

Step 3



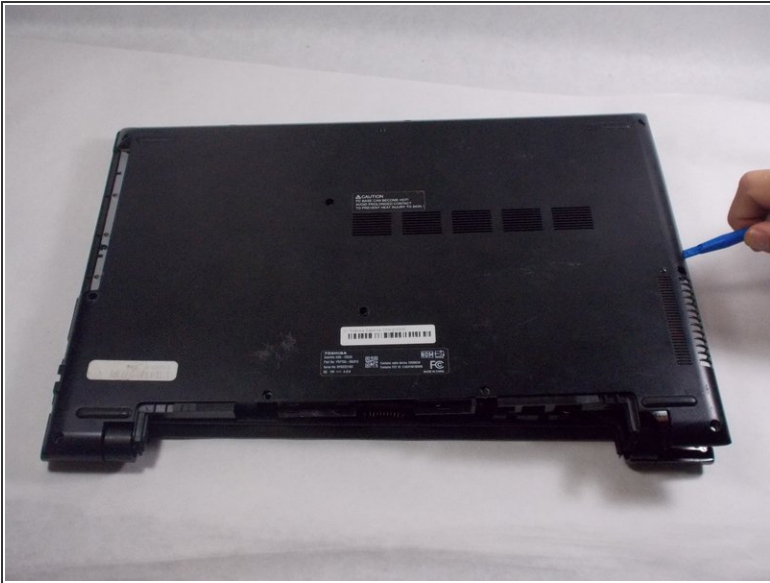
- Carefully remove the battery by wedging a plastic opening tool in-between the battery and back cover.

Step 4 — Back Panel



- Remove the eleven 7.0 mm Phillips #0 screws that secure the back cover.

Step 5



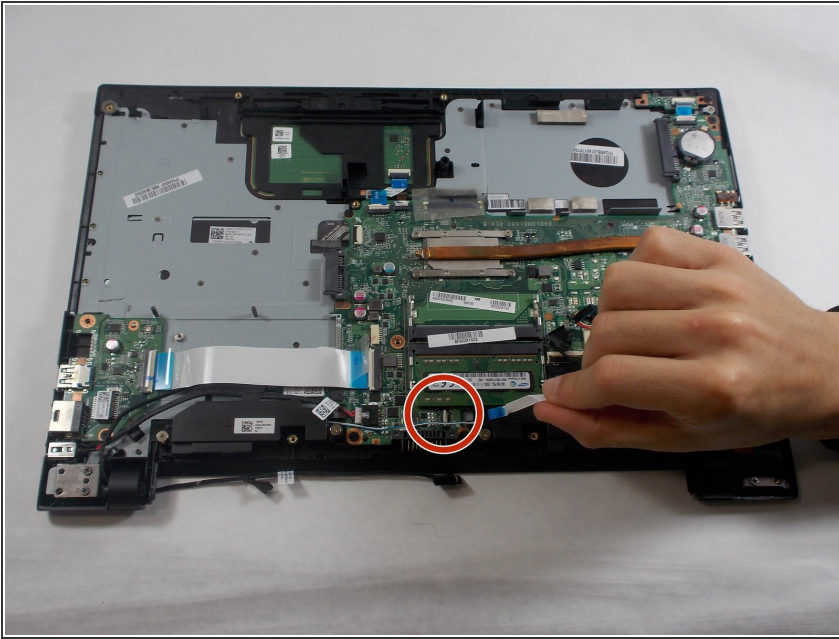
- Wedge the tip of a plastic opening tool between the back cover and metal frame.
- Twist the plastic tool, while wedged, to release the retaining tabs from the frame.
- Repeat these steps around the laptop to release all retaining tabs.

Step 6



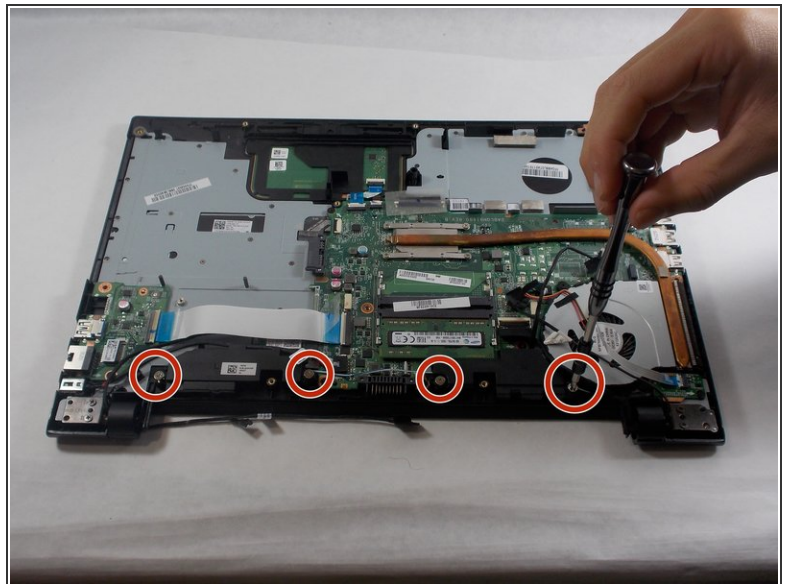
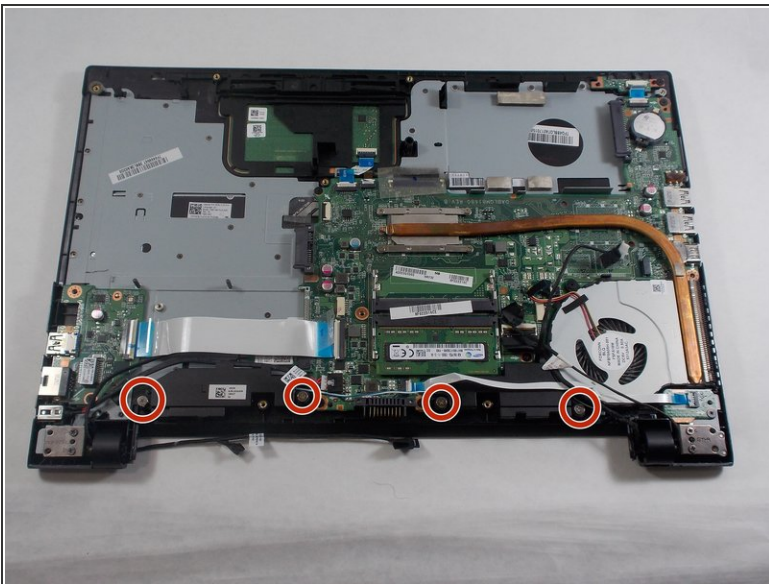
- Once all retaining tabs are released, pull up on the cover to remove.

Step 7 — Speakers



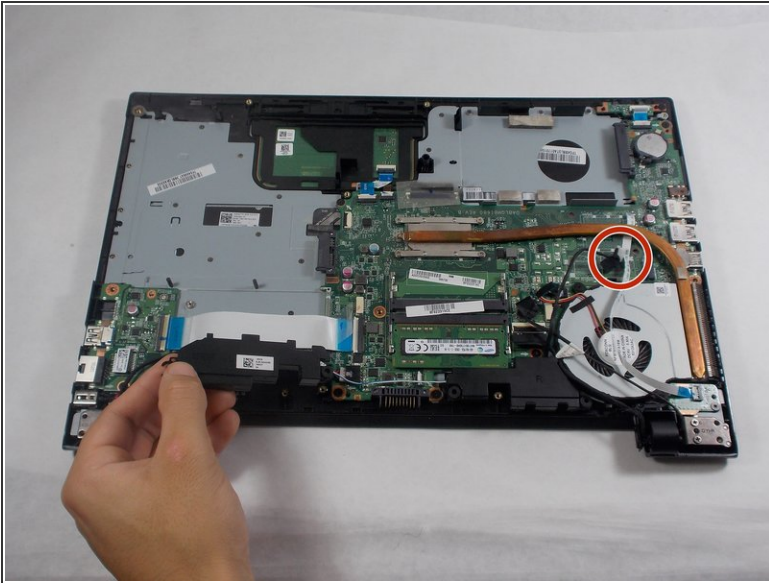
- Disconnect the power button strip by flipping up the white plastic clamp that connects it to the motherboard.
- Pull the ribbon wire out from plastic clamp.

Step 8



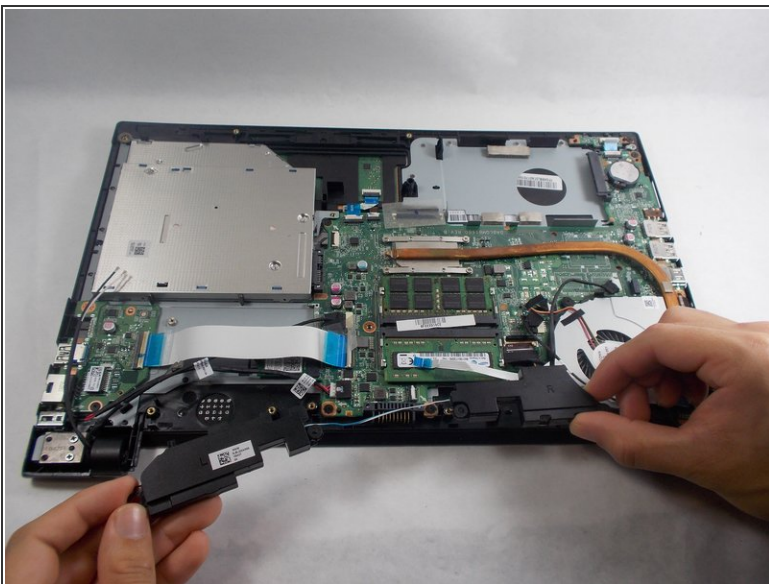
- Remove the four 10.0 mm Phillips #0 screws that hold the speakers in place.

Step 9



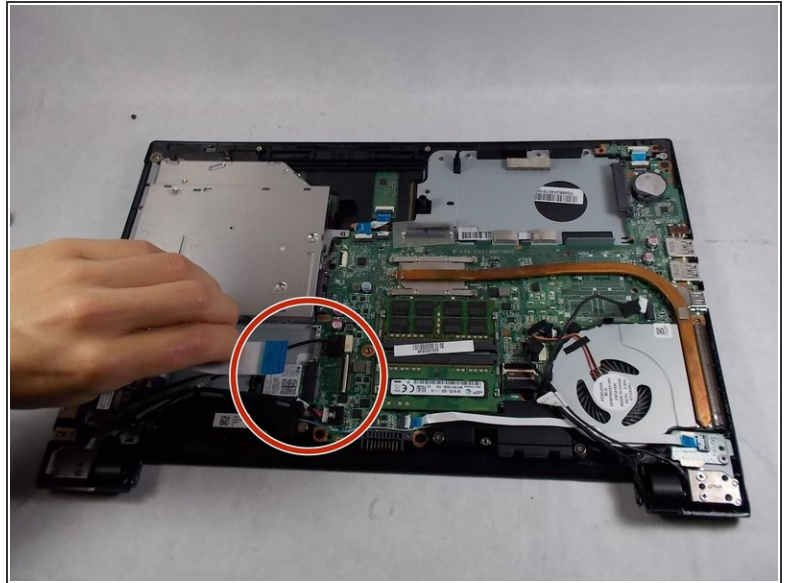
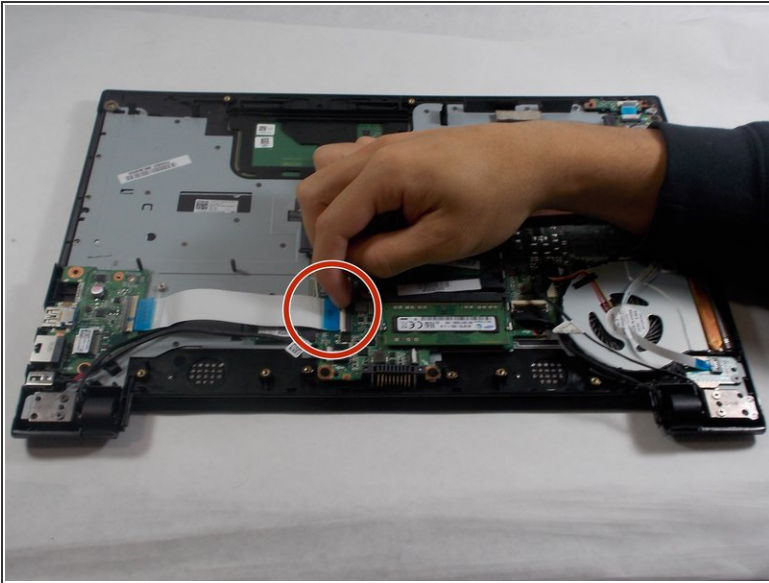
- Follow the black wire that connects the speakers to the motherboard.
- Pull the wire out from its socket to disconnect the speakers from the motherboard.

Step 10



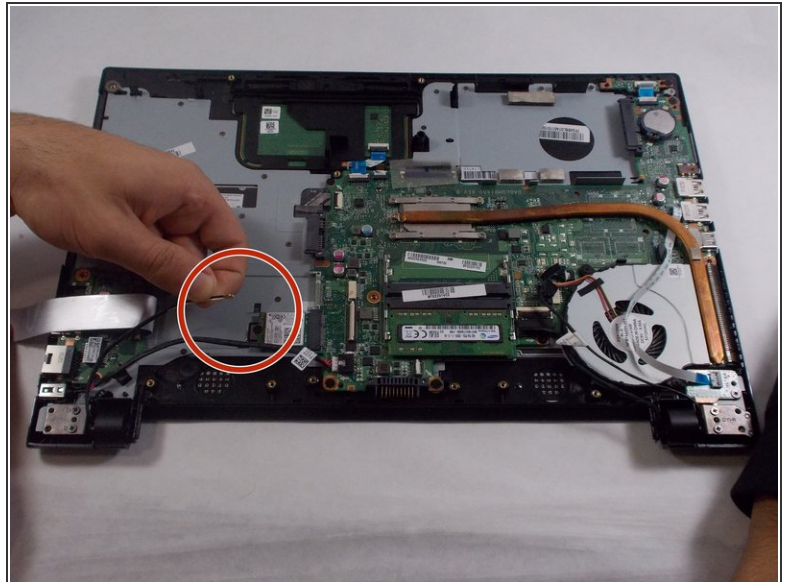
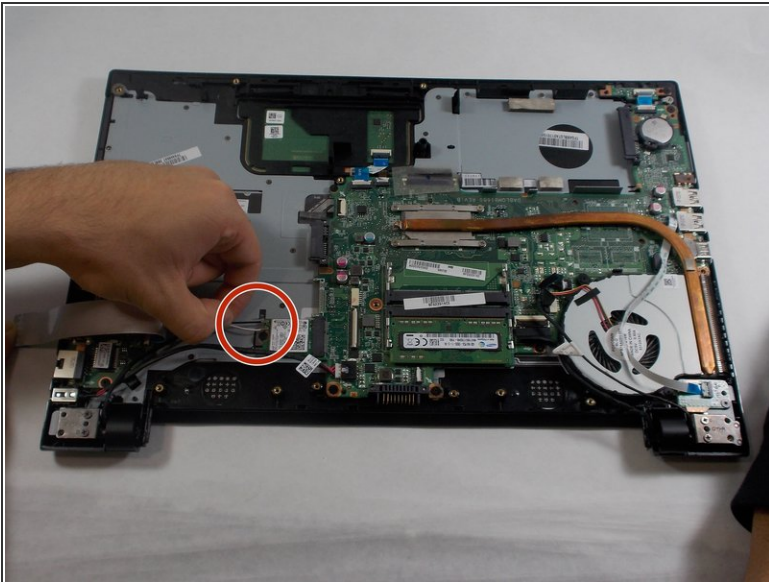
- Lift speakers up from their mounted position to remove.

Step 11 — Screen Assembly



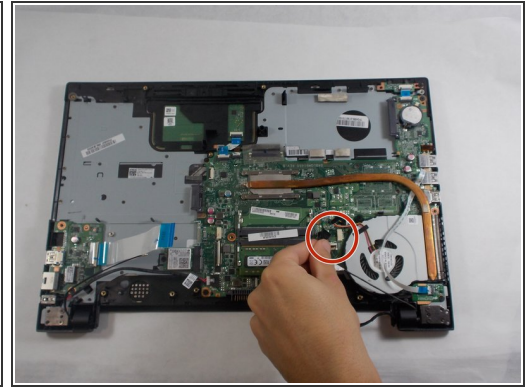
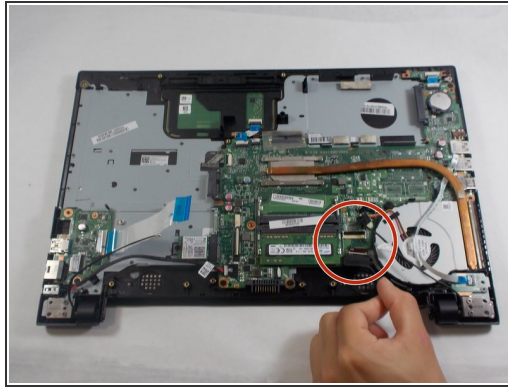
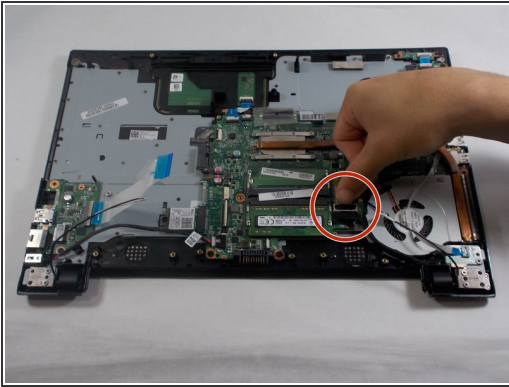
- Disconnect LAN from the motherboard power wire. Pop up the white clamp that holds it in place, then pull the wire out.

Step 12



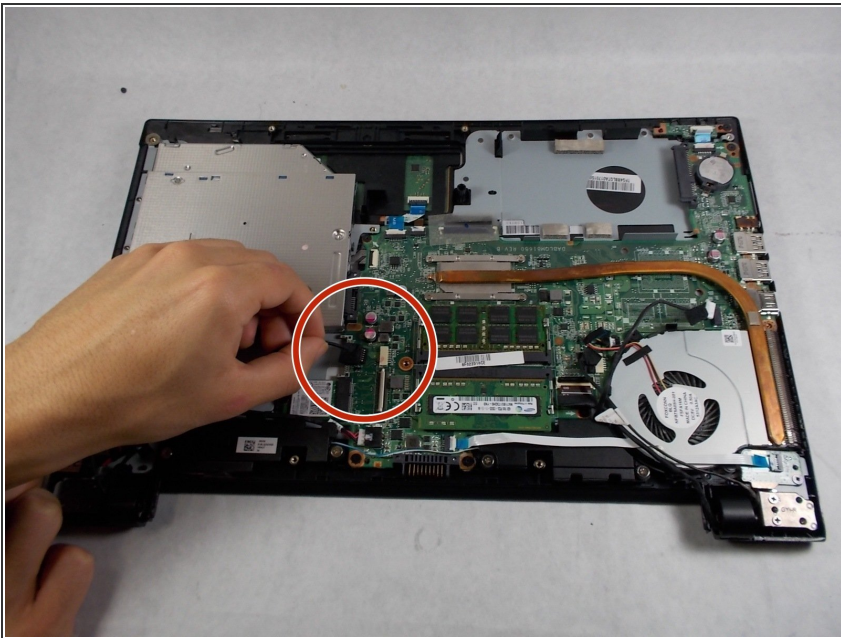
- Disconnect the two cables connecting the screen assembly to the WIFI card.

Step 13



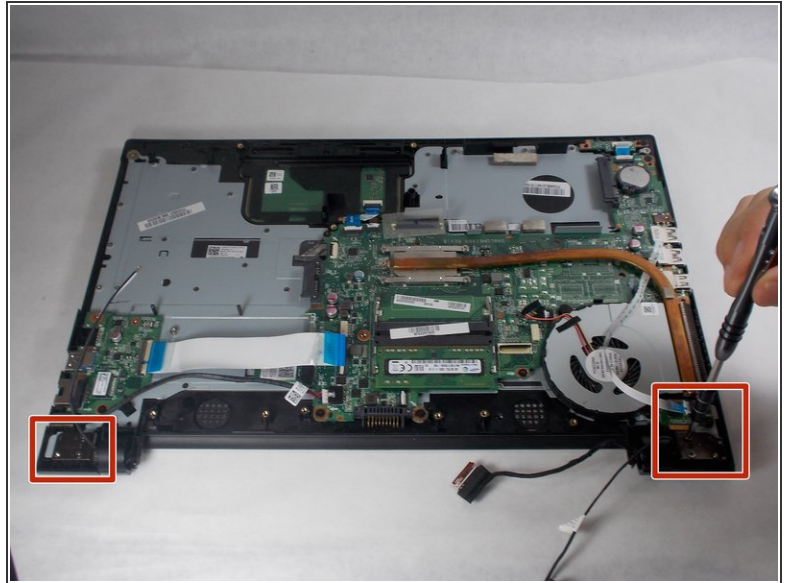
- Disconnect all remaining cables that connect the screen assembly to the motherboard.

Step 14



- Disconnect all remaining cables that connect the screen assembly to the motherboard.

Step 15



- Remove the four 7.0 mm Phillips #0 screws on both ends of the laptop that attach the screen assembly to the laptop.

Step 16



- Slowly open laptop while the bottom is facing up. Begin to separate the bottom of laptop from the screen assembly brackets.
- Remove the screen assembly.

To reassemble your device, follow these instructions in reverse order.