



Toshiba Satellite S75D-A7346 Hard Drive Replacement

This Replacement guide will be teaching you step by step how to replace the hard drive on you Toshiba Satellite S75D-A7346

Written By: Emil Lambert



INTRODUCTION

This Replacement guide will be teaching you step by step how to replace the hard drive on you Toshiba Satellite S75D-A7346



TOOLS:

- 1x philips #000 (1)
-

Step 1 — Taking Out The Battery



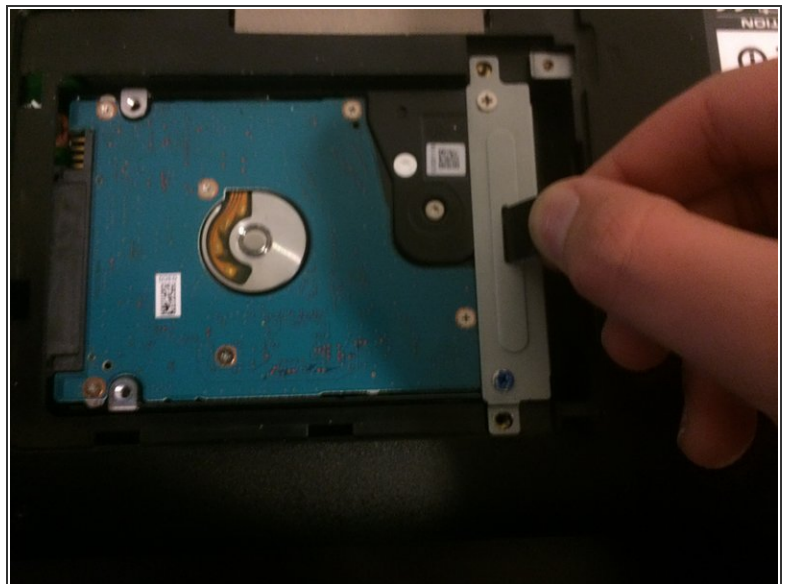
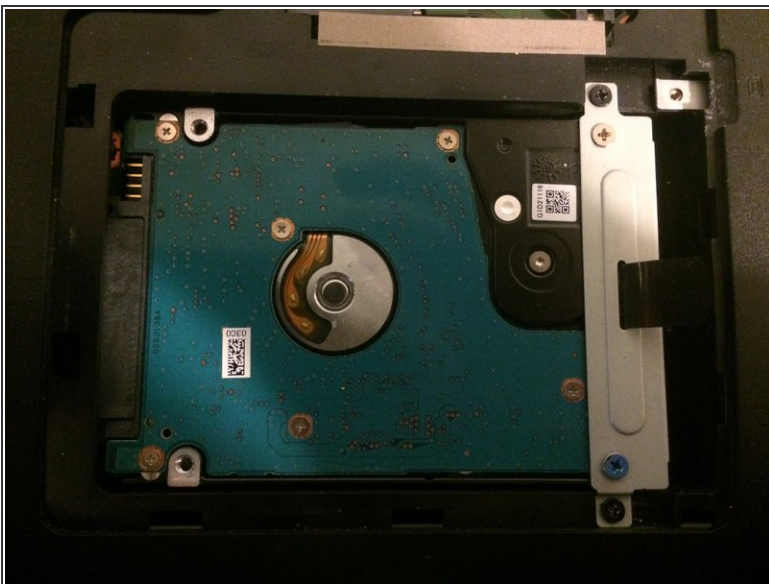
- First we have to take out the battery
- Pull the switch on the left to the left
- then hold the switch on the right to the right direction
- then pull up the battery from the point inbetween the 2 switches

Step 2 — UnScrewing The BackPlate



- Unscrew the screw located next to the information sticker
- Then get a screw driver or prior to gently pry the covering plate

Step 3 — Taking Out The HDD



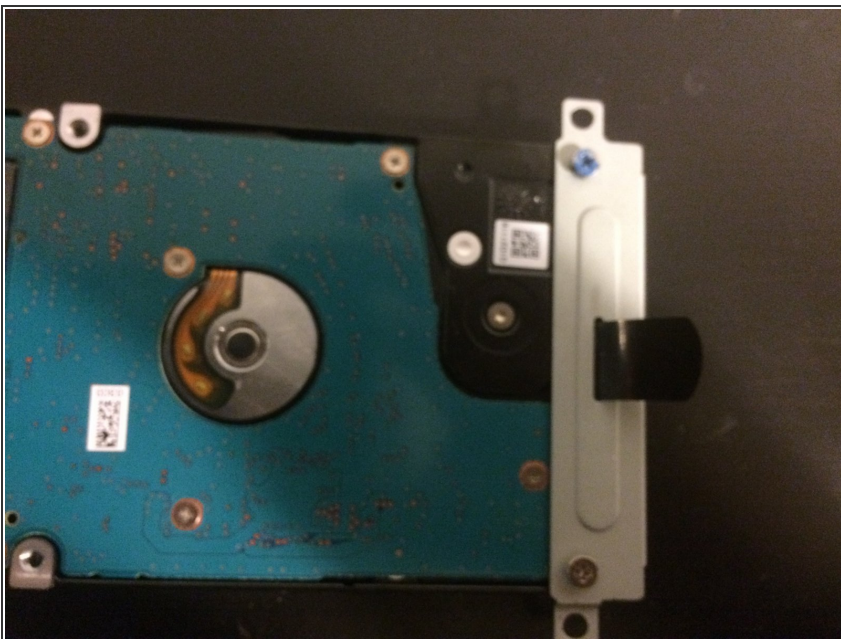
- Unscrew the black screws and then pull the black tab to the right
- Then lift it out and place it somewhere

Step 4 — Taking The HDD Of the Mount



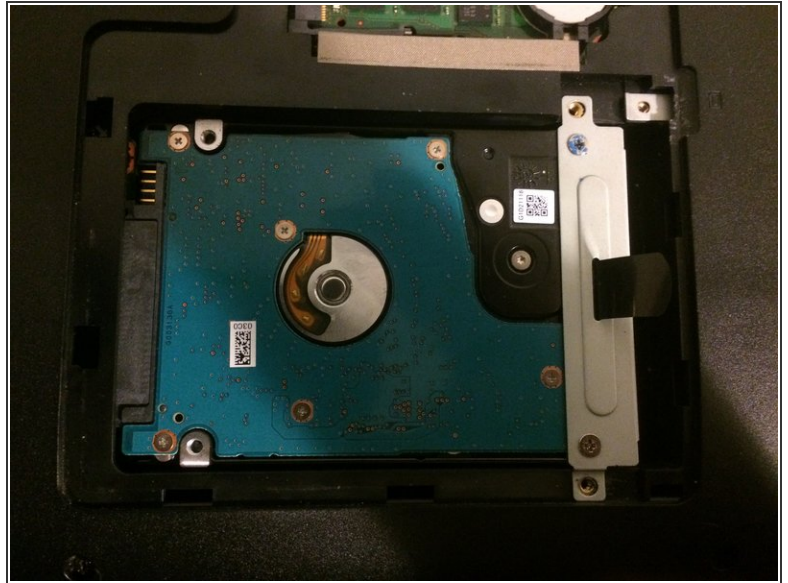
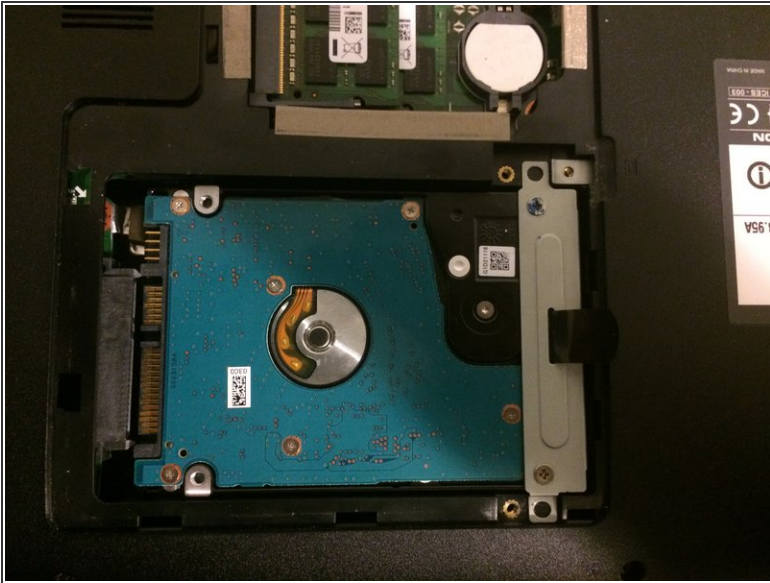
- Unscrew the silver screws and move the hard drive somewhere else

Step 5 — Adding The New HDD/SSD To The Mount



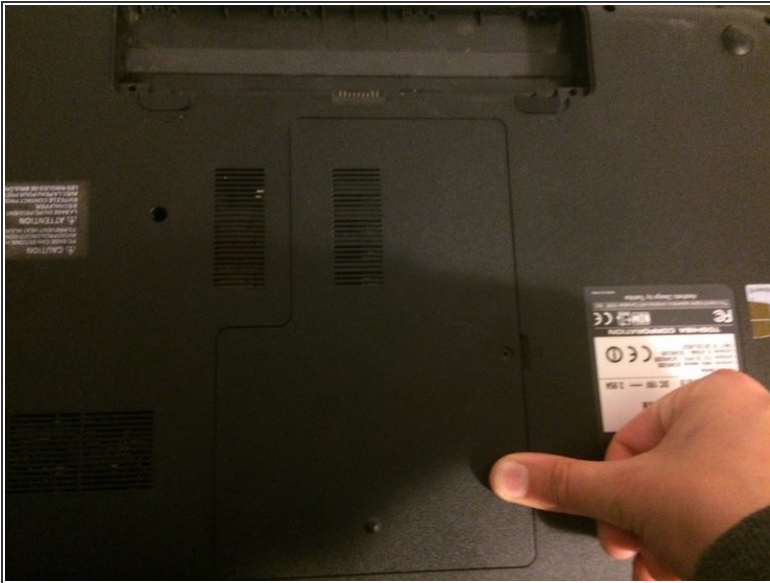
- Screw the silver screws into the screw slots furthest away from the connectors
- Note: This computer is only compatible with 2.5 inch SATA 3Gbps

Step 6 — Connecting The HDD/SSD



- Put the Hard Drive in slot (make sure the connectors are on the same side of the connectors)
- Push the Hard Driver into the connector and screw the black screws in

Step 7 — Putting On The Backplate



- Put on the backplate and put pressure around the edges of the backplate so it stays flat with the case
- Then screw in the screw next to the information sticker

Step 8 — Putting In The Battery



- Place the battery in the slot
- Then hold the right switch to the right and push the battery in, then release the switch.
- move the left switch to the right

Step 9 — You Finished



- You have now finished the replacement

To reassemble your device, follow these instructions in reverse order.