



# Toshiba Satellite T135D-S1324 Battery Replacement

This guide will help you to replace the battery in your Toshiba Satellite T135D-S1324 to extend the life of your device.

Written By: Karin Juarez

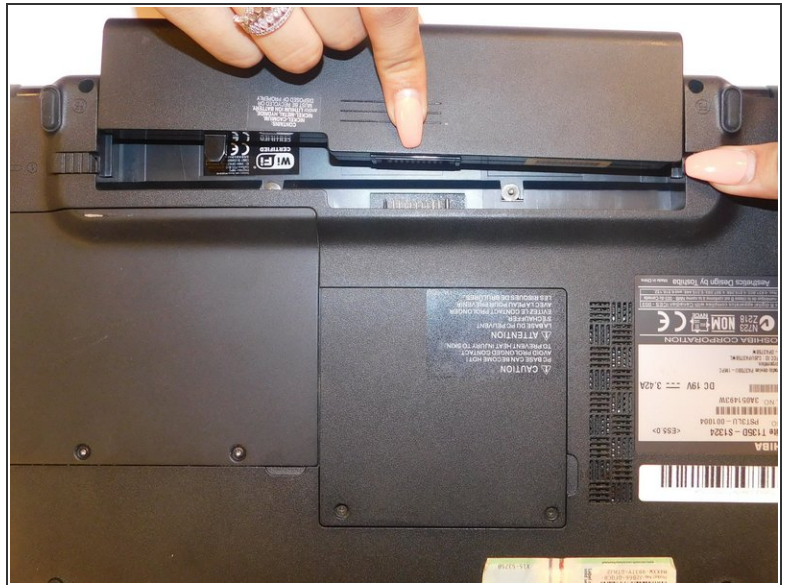
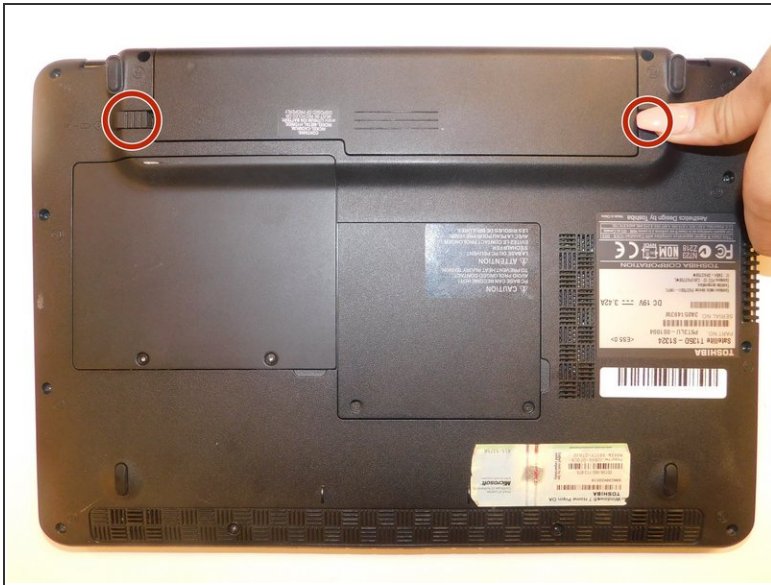


## INTRODUCTION

This guide will be very useful if you are facing problems with turning on your device.

If you are having trouble turning on your Toshiba Satellite T135D-S1324 you might want to replace the battery. By replacing the main source of energy you should find that your laptop will light up and you should be able to get back to work in a matter of minutes.

## Step 1 — Battery



- ❗ Make sure to turn off your device and unplug it before you proceed.
- Pull back the claps to release the battery.
- When the battery is unlocked, pull back the battery to completely remove it.

To reassemble your device, follow these instructions in reverse order.