



Toshiba Satellite U405D-S2902 Keyboard Replacement

This guide shows how to replace a keyboard if it is needed.

Written By: Brandon Kirklen



INTRODUCTION

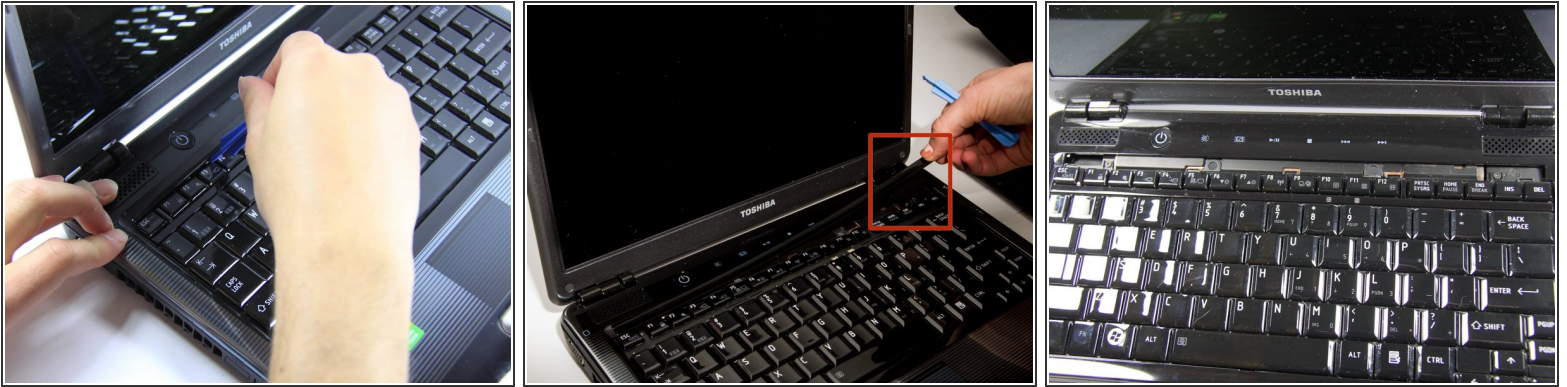
The function of the keyboard is to allow you to type on the computer. Sometimes it can break and need to be replaced.



TOOLS:

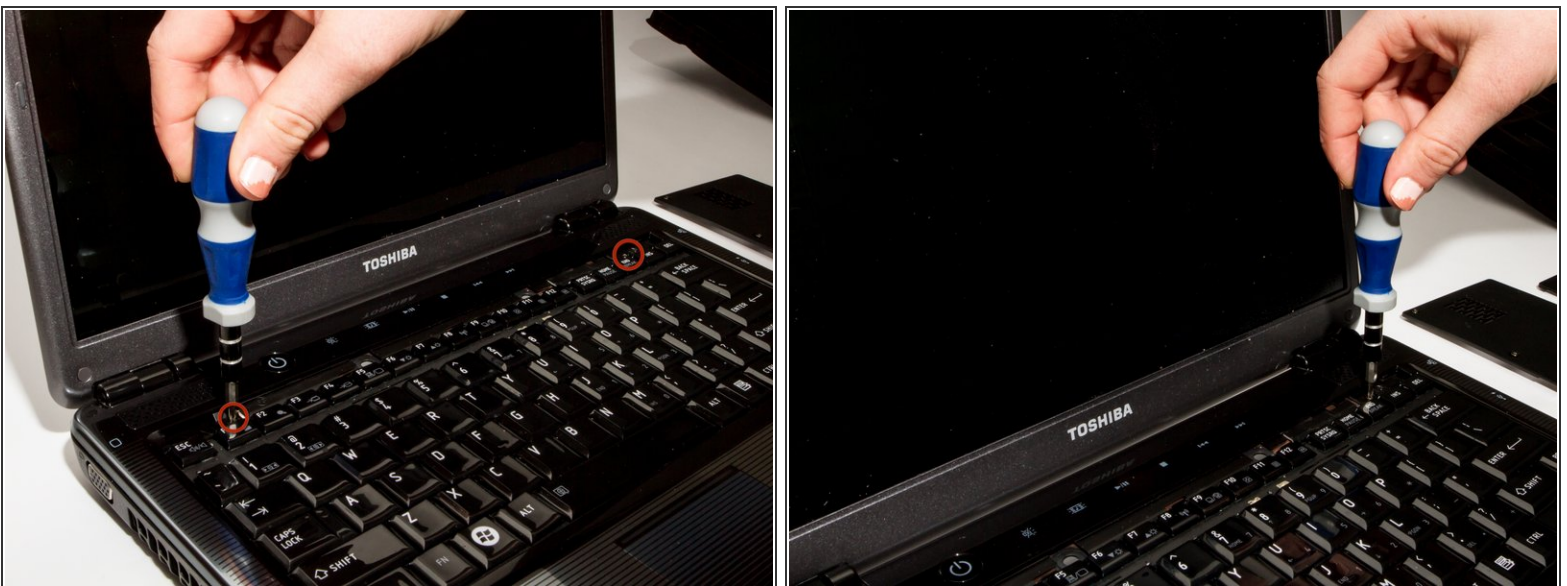
- [Phillips #1 Screwdriver](#) (1)
 - [iFixit Opening Tools](#) (1)
-

Step 1 — Keyboard



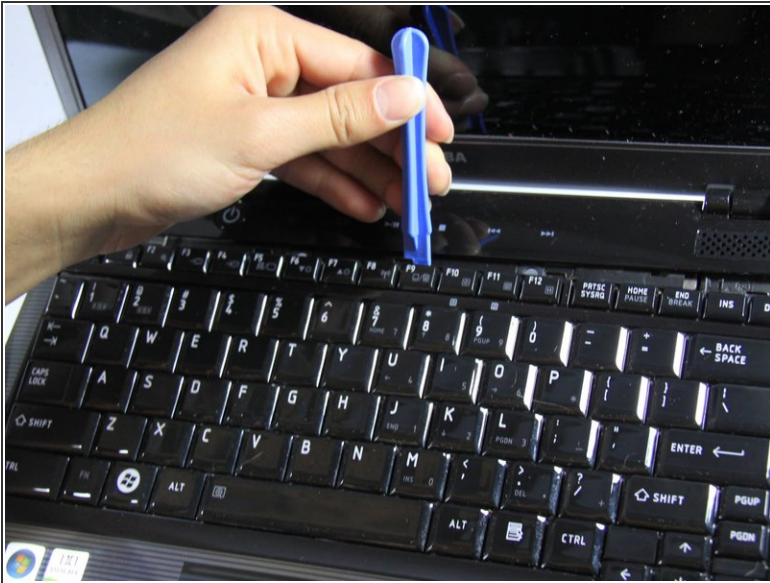
- Situate the laptop so that it is open and the display is facing you.
- Use the plastic opening tool to pry the black plastic insert upward. The insert can be found at the top of the keyboard.
- Once the insert is loose, carefully remove it from the device.

Step 2



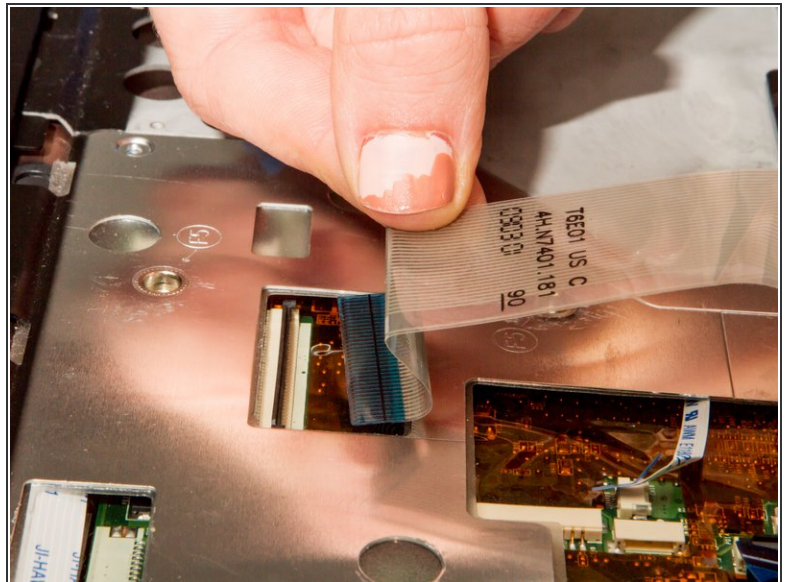
- Using #1 Phillips Screwdriver, remove both of the 5 mm screws that are located beneath the insert.

Step 3



- Use the plastic opening tool to begin removing the keys off of the device.
- ❗ Once the keys are off, gently remove the keyboard. Be careful of the ribbon cable that still connects the keyboard to motherboard.

Step 4



- Lift up the gate on the ZIF socket to release the ribbon.
- Ease the ribbon connecting the keyboard to the motherboard out of the ZIF socket.

This document was generated on 2019-09-25 07:01:04 AM (MST).

To reassemble your device, follow these instructions in reverse order.