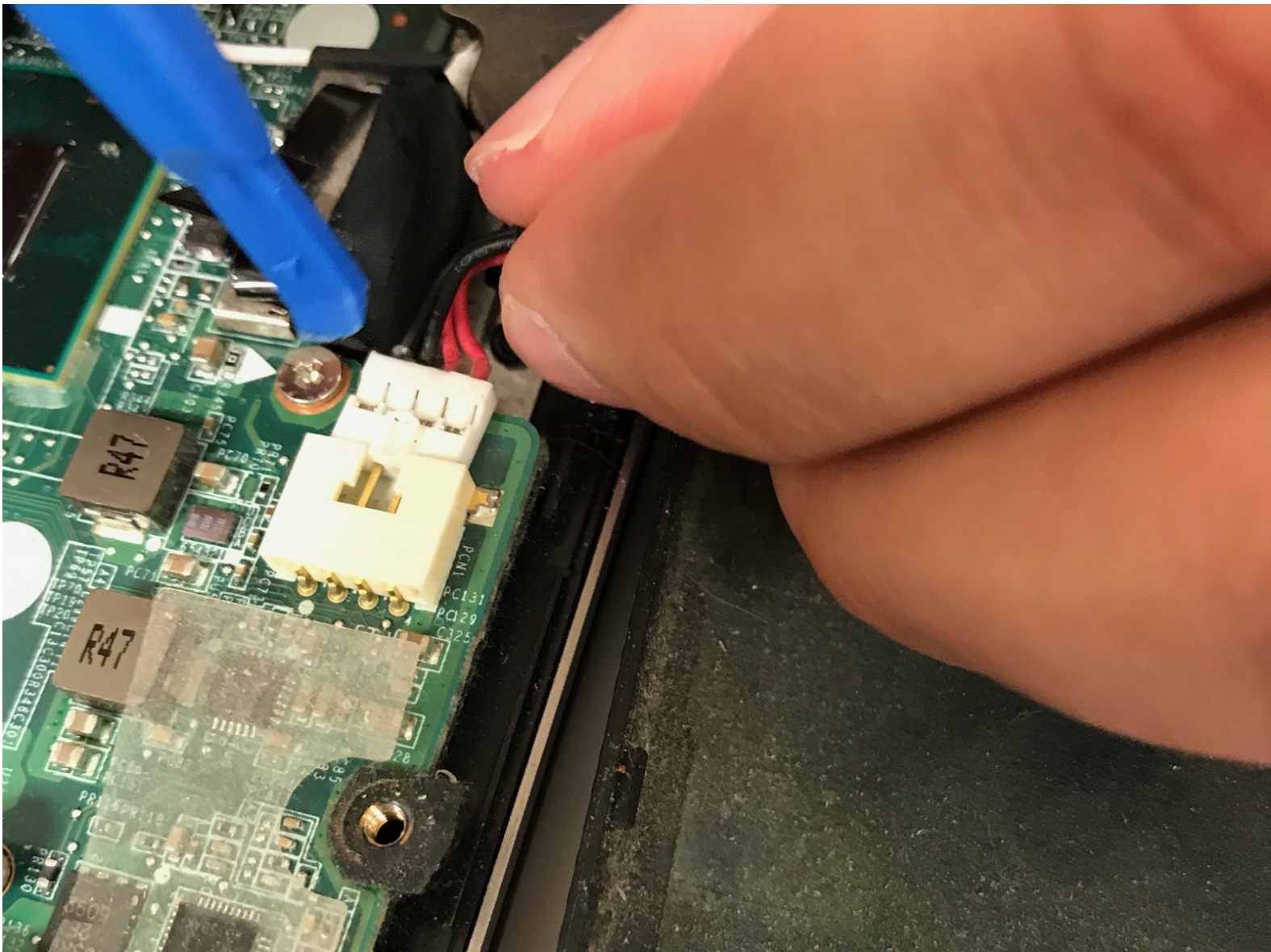




Toshiba Satellite U840W 12V Charging Port Replacement

This guide will walk you through how to replace your 12V charging port on your Toshiba Satellite U840W.

Written By: Joshua Pedersen



INTRODUCTION

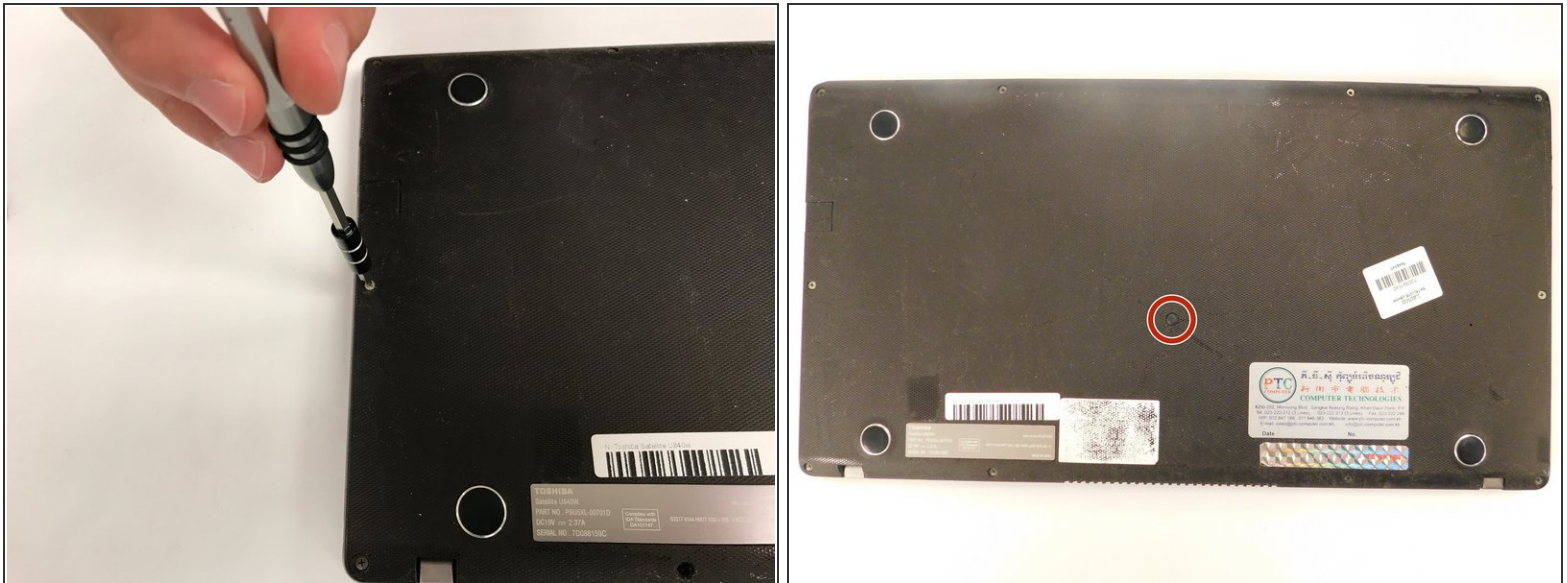
Removing this piece makes working inside of the computer easier. To replace this part (if it is broken) follow this guide.



TOOLS:

- [Phillips #00 Screwdriver](#) (1)
 - [iFixit Opening Tools](#) (1)
-

Step 1 — Toshiba Satellite U840W Disassembly Guide



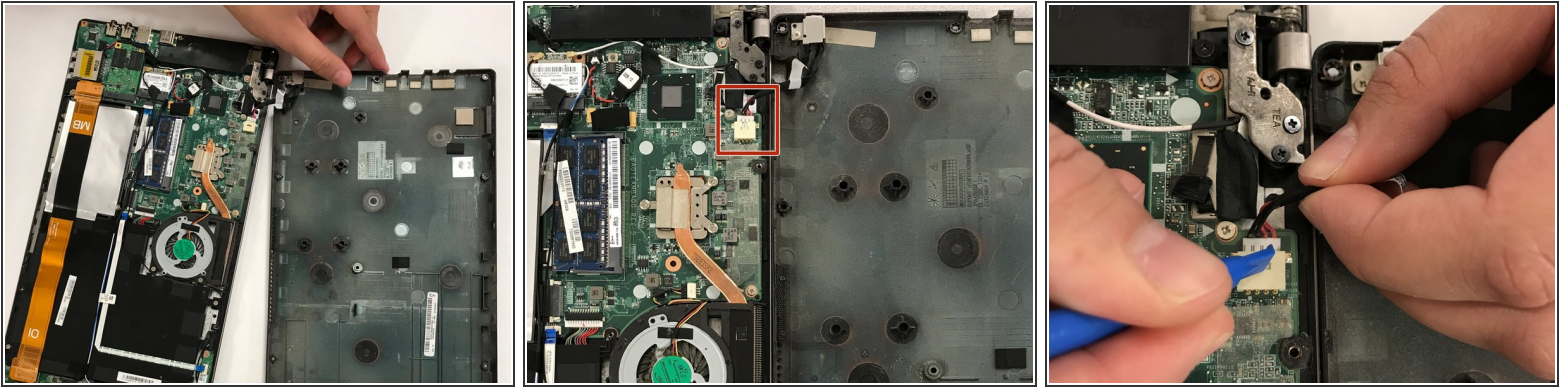
- There are ten 5mm screws surrounding the edge of the cover.
- A rubber cap covers the eleventh 5mm screw (in the center).
- Remove the screws using a Phillips #00 screwdriver.

Step 2



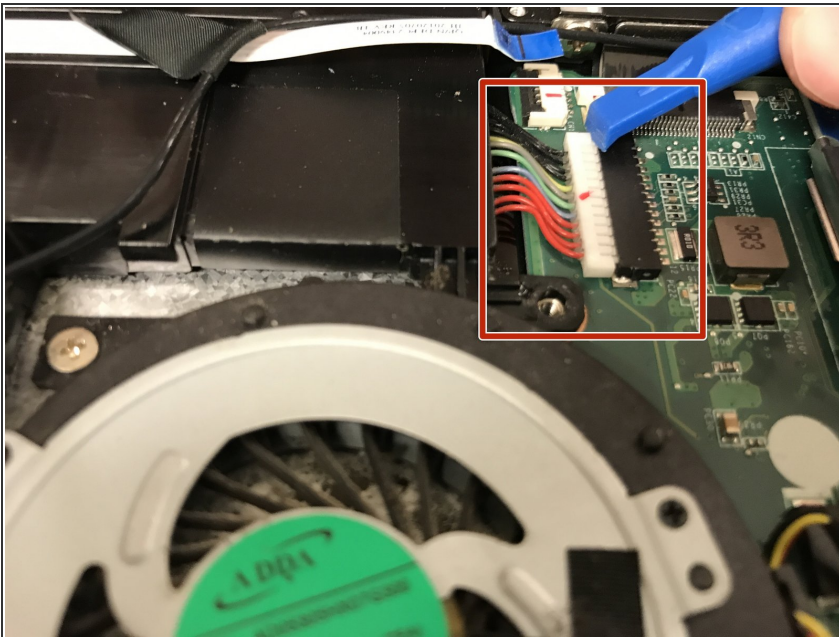
- Pry between the casing and cover using a plastic wedge tool.
- Use the wedge tool to move along the case & slowly pry it open.
- The wire for the 12v charging port connects the cover to the casing.

Step 3



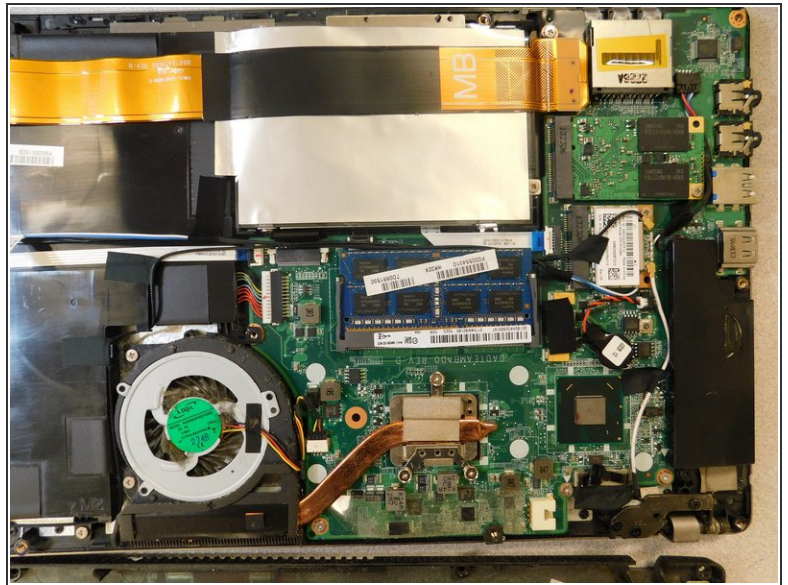
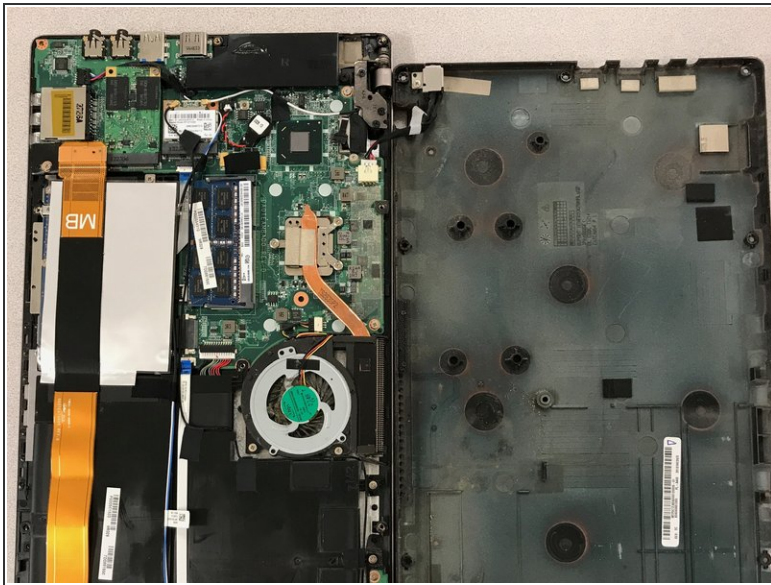
- Disconnect this connector from the motherboard to avoid damaging the motherboard or charging port cable.

Step 4



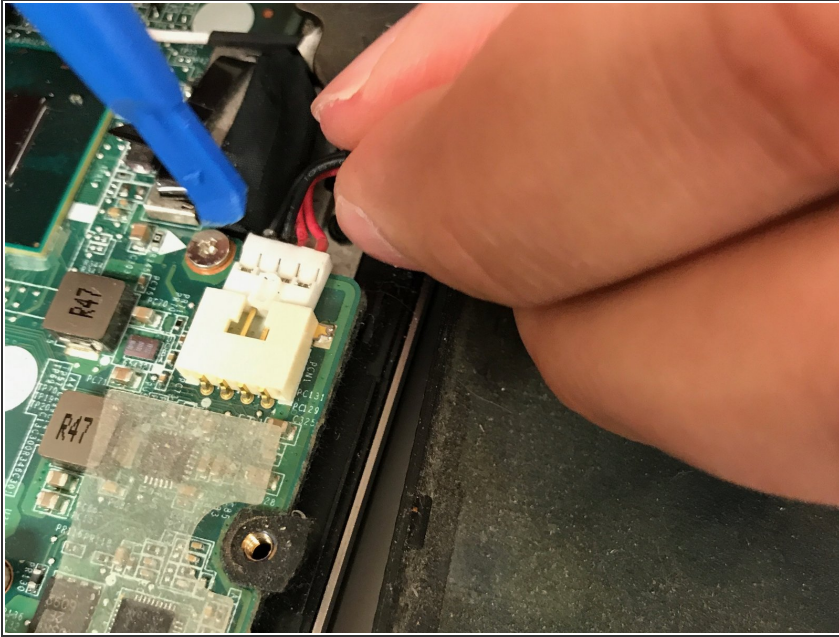
- Disconnect the battery.
- Hold down the power button for ~10 seconds to discharge any stored electricity from the motherboard.

Step 5



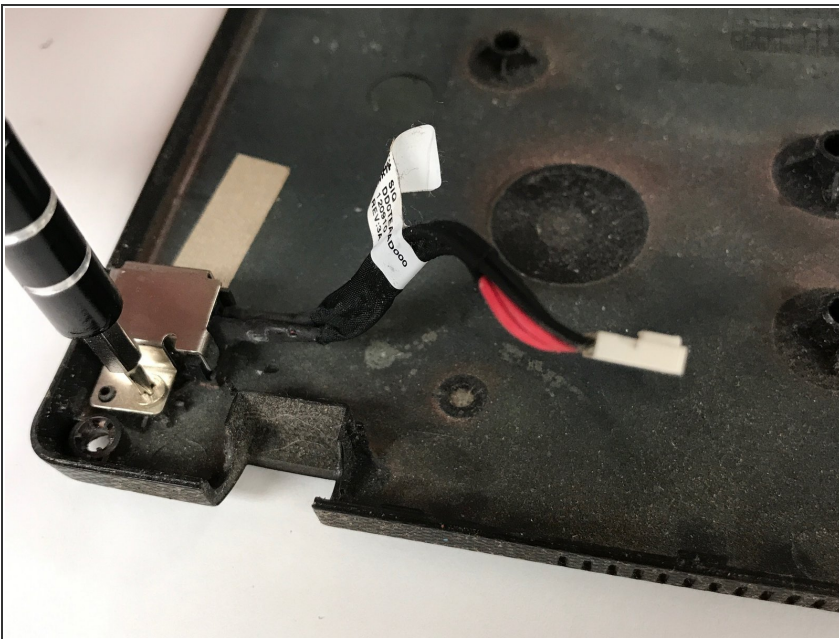
- At this point you should be able to:
- [Replace 12V Charging Port](#)
- [Replace RAM](#)
- [Replace Processor Fan](#)
- [Replace Speakers](#)

Step 6 — 12V Charging Port



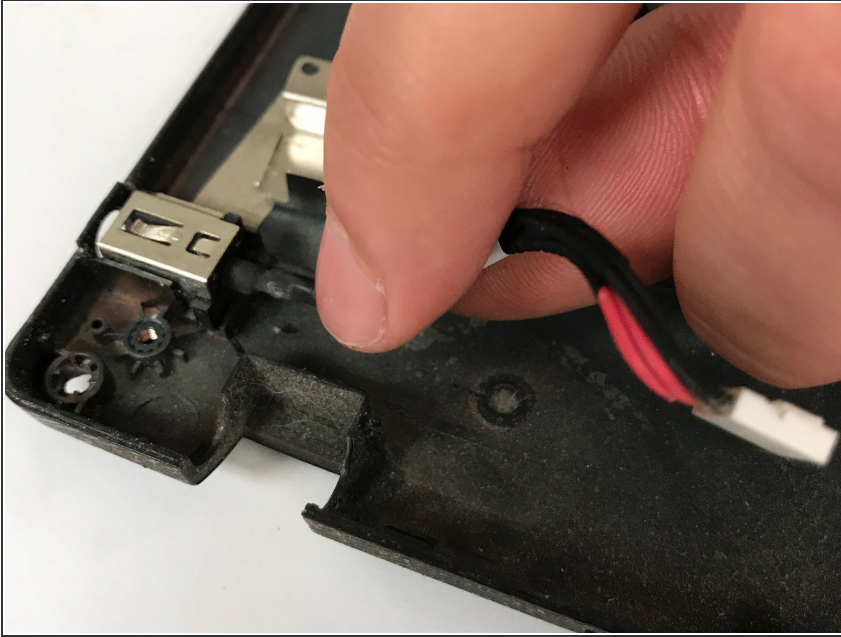
- Remove the connector from the motherboard.
- ⓘ This separates the only connection from the motherboard to the cover.

Step 7



- Remove the screw holding 12v charging port to the cover.

Step 8



- Remove the 12v charging port from the cover.

To reassemble your device, follow these instructions in reverse order.