



Toshiba Satellite U840W Disassembly Guide

This is a guide to removing the bottom cover to gain access to system components for a Toshiba Satellite U840W.

Written By: Eric



INTRODUCTION

Before working on any other article for replacement, start here to get instructions on how to remove the bottom cover and gain access to the system components.

TOOLS:

- [iFixit Opening Tools](#) (1)
 - [Phillips #00 Screwdriver](#) (1)
-

Step 1 — Toshiba Satellite U840W Disassembly Guide



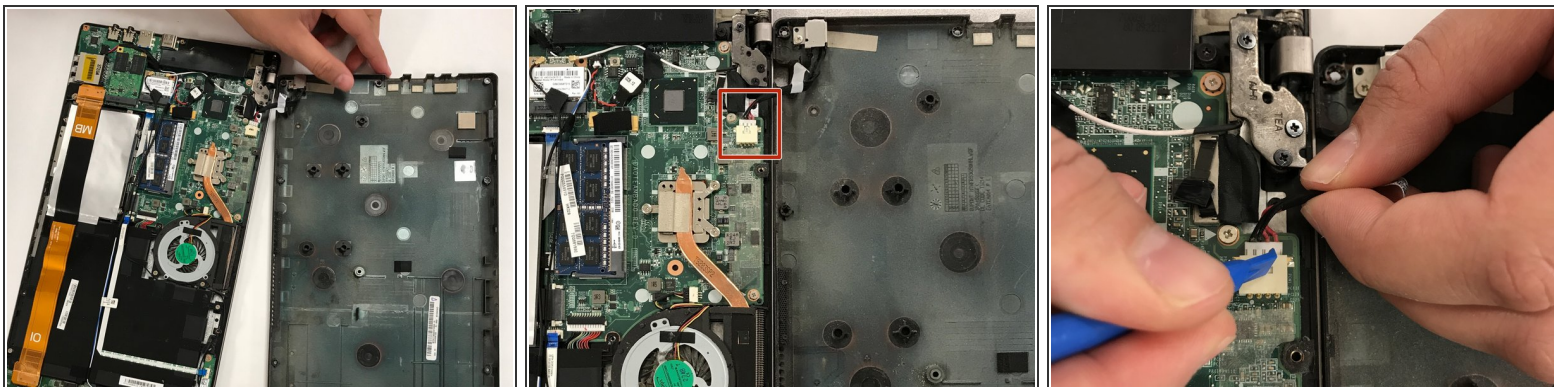
- There are ten 5mm screws surrounding the edge of the cover.
- A rubber cap covers the eleventh 5mm screw (in the center).
- Remove the screws using a Phillips #00 screwdriver.

Step 2



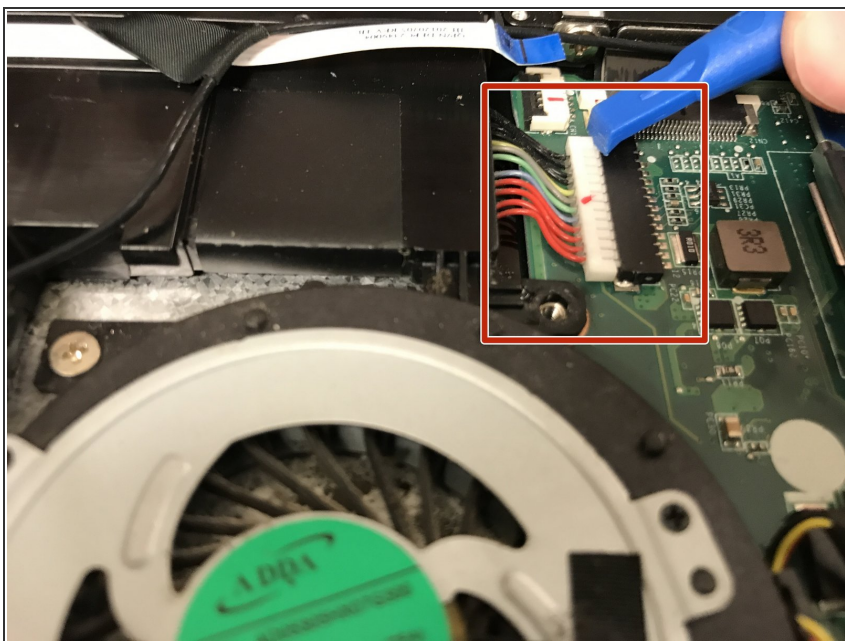
- Pry between the casing and cover using a plastic wedge tool.
- Use the wedge tool to move along the case & slowly pry it open.
- The wire for the 12v charging port connects the cover to the casing.

Step 3



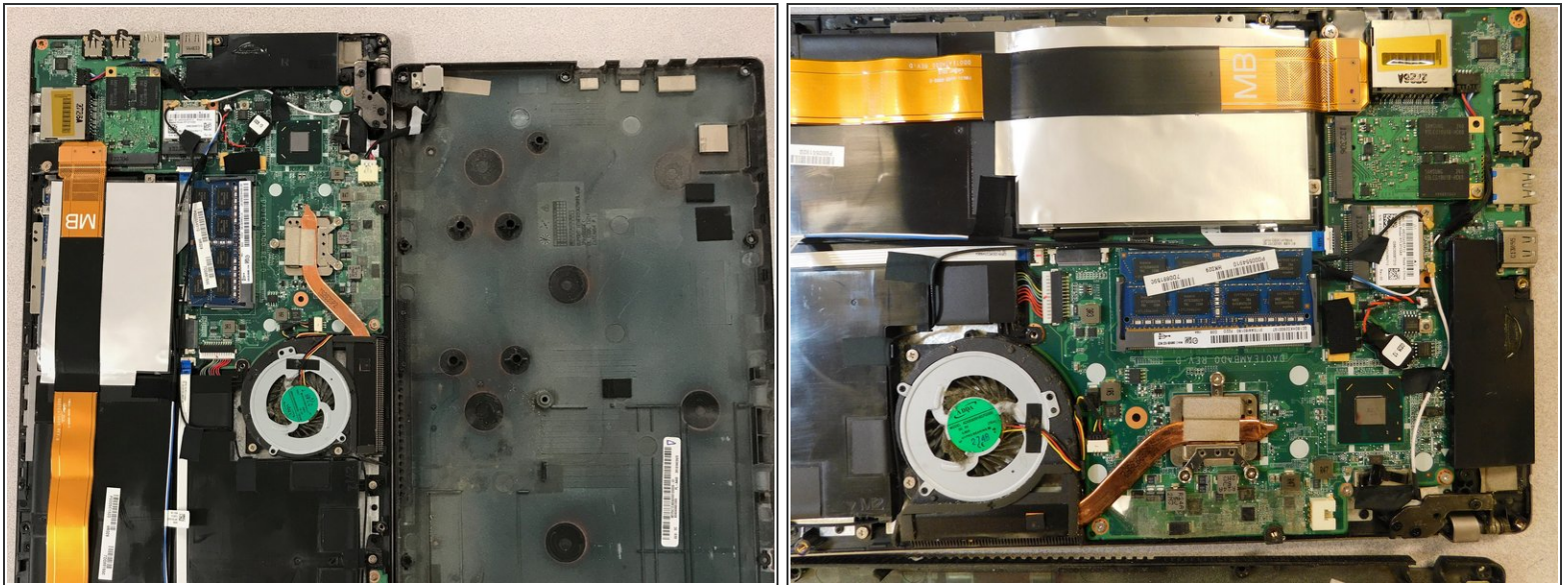
- Disconnect this connector from the motherboard to avoid damaging the motherboard or charging port cable.

Step 4



- Disconnect the battery.
- Hold down the power button for ~10 seconds to discharge any stored electricity from the motherboard.

Step 5



- At this point you should be able to:
- [Replace 12V Charging Port](#)
- [Replace RAM](#)
- [Replace Processor Fan](#)
- [Replace Speakers](#)

To reassemble your device, follow these instructions in reverse order.