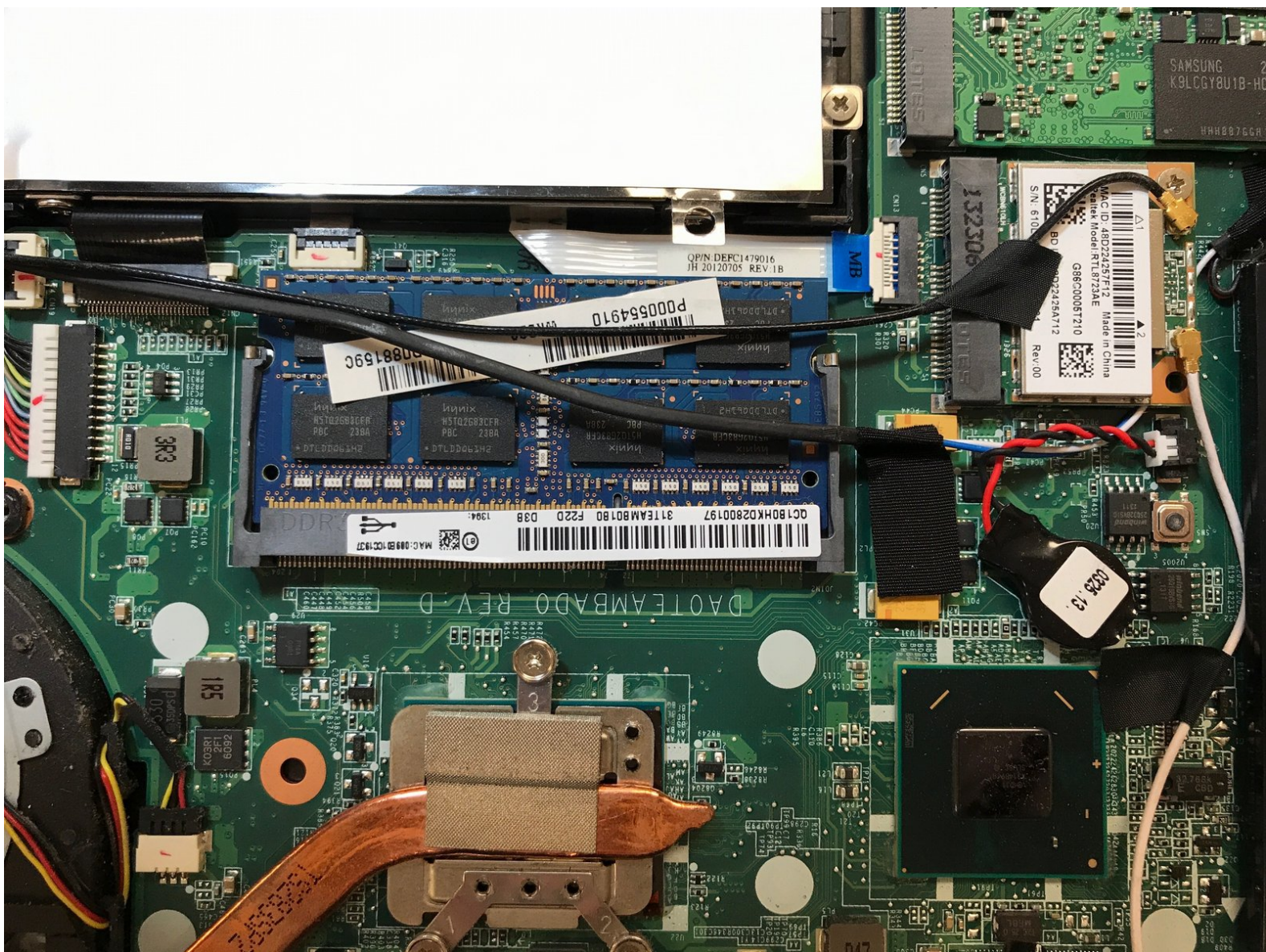




Written By: Eric



Page 1 of 6

INTRODUCTION

Is your Toshiba Satellite performance being rather slow lately? If so, these steps will show you how to replace the RAM on your motherboard.

TOOLS:

- [Phillips #00 Screwdriver](#) (1)
 - [iFixit Opening Tools](#) (1)
-

Step 1 — Toshiba Satellite U840W Disassembly Guide



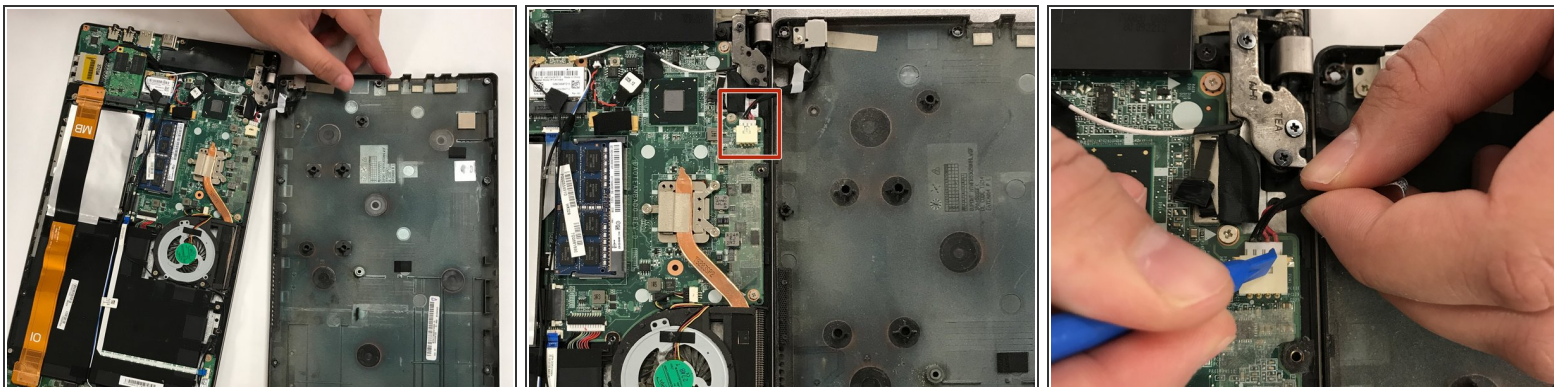
- There are ten 5mm screws surrounding the edge of the cover.
- A rubber cap covers the eleventh 5mm screw (in the center).
- Remove the screws using a Phillips #00 screwdriver.

Step 2



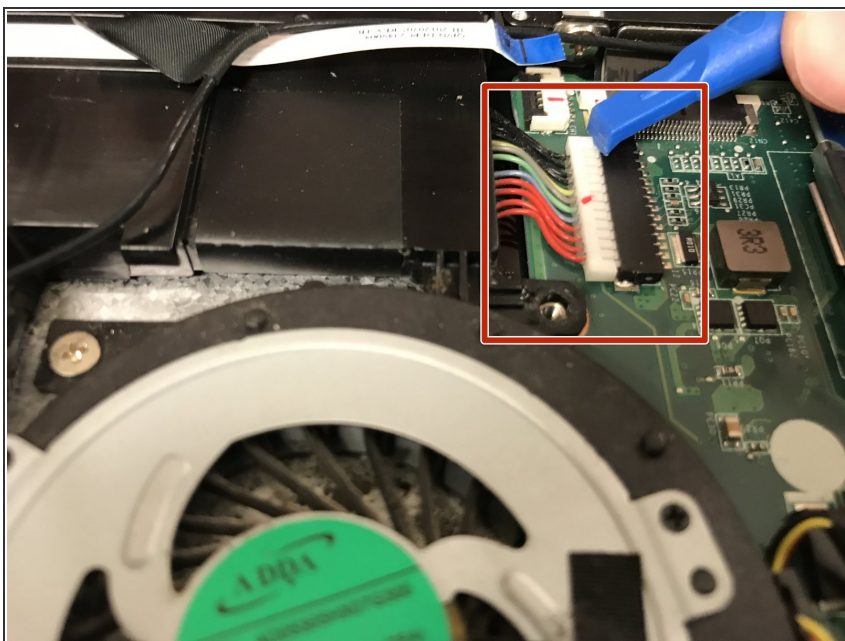
- Pry between the casing and cover using a plastic wedge tool.
- Use the wedge tool to move along the case & slowly pry it open.
- The wire for the 12v charging port connects the cover to the casing.

Step 3



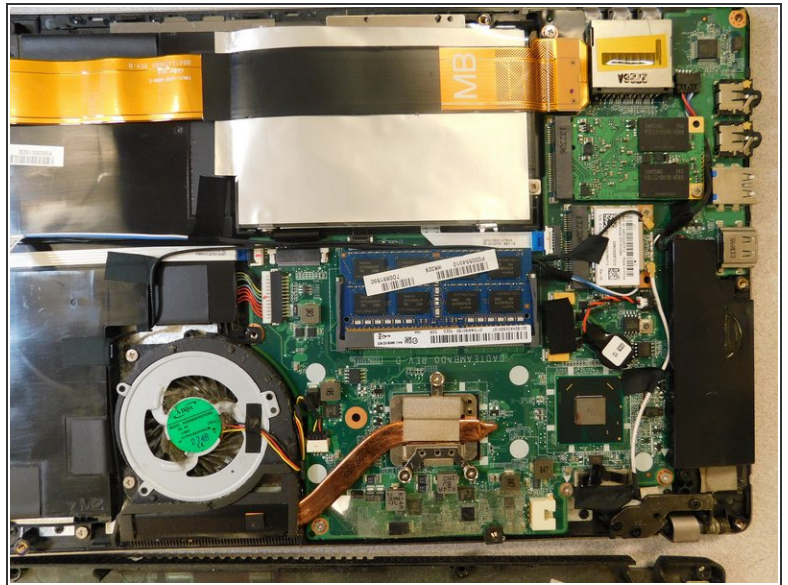
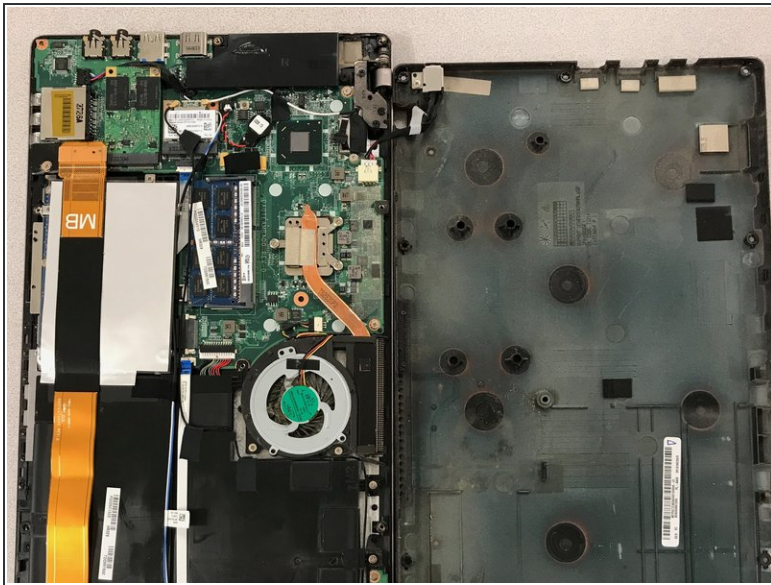
- Disconnect this connector from the motherboard to avoid damaging the motherboard or charging port cable.

Step 4



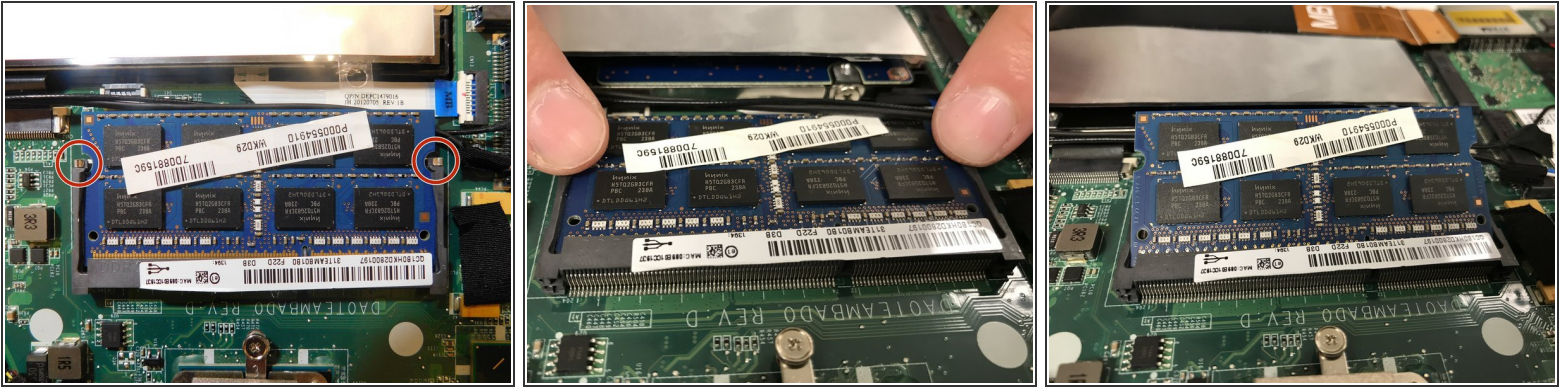
- Disconnect the battery.
- Hold down the power button for ~10 seconds to discharge any stored electricity from the motherboard.

Step 5



- At this point you should be able to:
- [Replace 12V Charging Port](#)
- [Replace RAM](#)
- [Replace Processor Fan](#)
- [Replace Speakers](#)

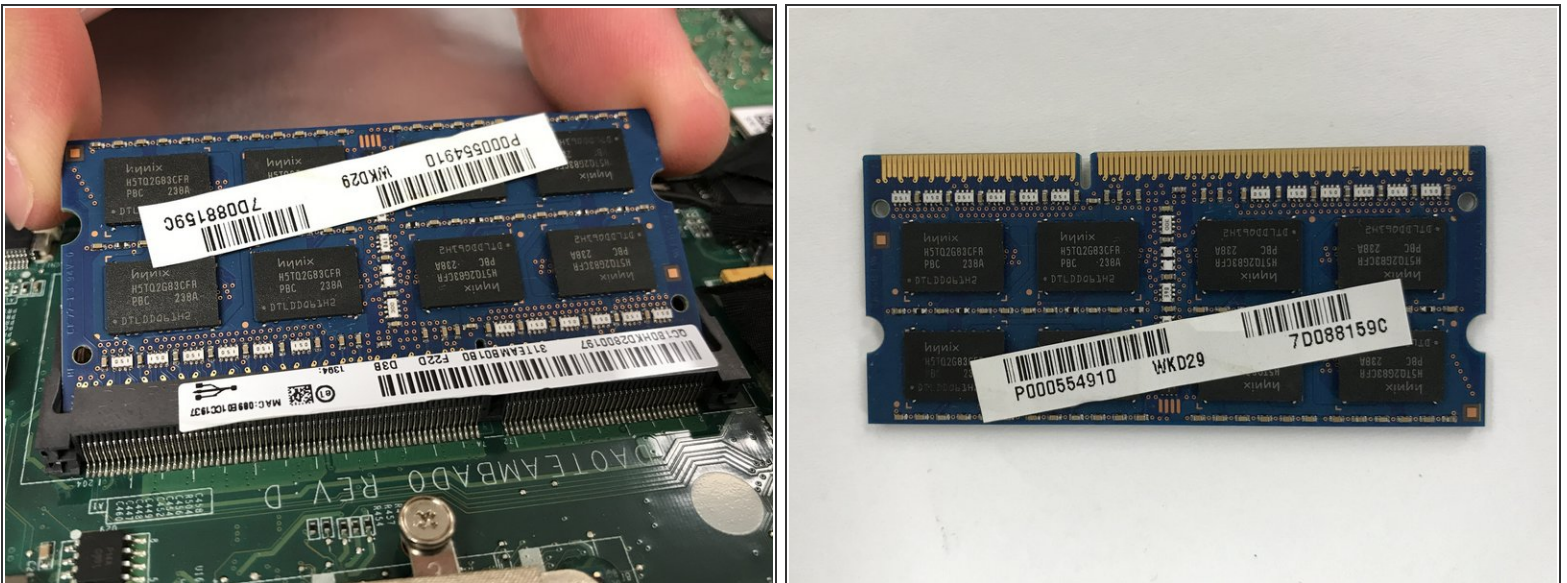
Step 6 — RAM



- Push each latch arm away from the RAM card until the card lifts up, away from the motherboard.

i The speaker wire may get in the way of the card while you are pushing the arms away. Push the wire out of the way as well.

Step 7



- Remove the RAM card carefully while holding only the edges.

To reassemble your device, follow these instructions in reverse order.