



Toshiba Satellite U925T-S2120 Battery Replacement

Use this guide to replace the battery of your Toshiba Satellite U925T-S2120.

Written By: Sonia Shah



INTRODUCTION

In this guide you will learn how to remove the battery of your Toshiba Satellite U925T-S2120. If your battery is broken, you may need to replace it. Before beginning this guide you should have all tools that are listed.

TOOLS:

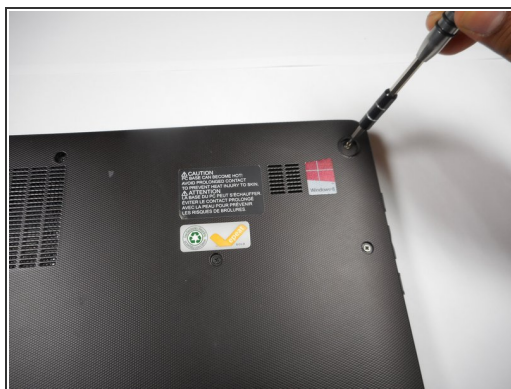
- [Phillips #1 Screwdriver](#) (1)
 - [iFixit Opening Tools](#) (1)
 - [Tweezers](#) (1)
-

Step 1 — Battery



- Use tweezers to remove the nine rubber grip pads on the back panel of the laptop.

Step 2



- Use a Philips #1 screwdriver to remove the nine 5.8 mm screws highlighted.
- Remove the two 6.8 mm screws. Set aside.

Step 3



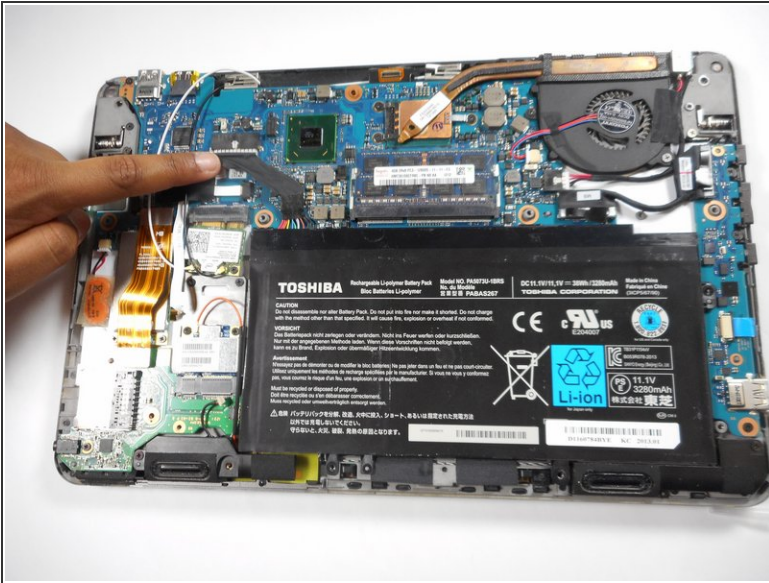
- Remove the back panel by inserting the plastic opening tool into the seam of the laptop and pushing downwards.

Step 4



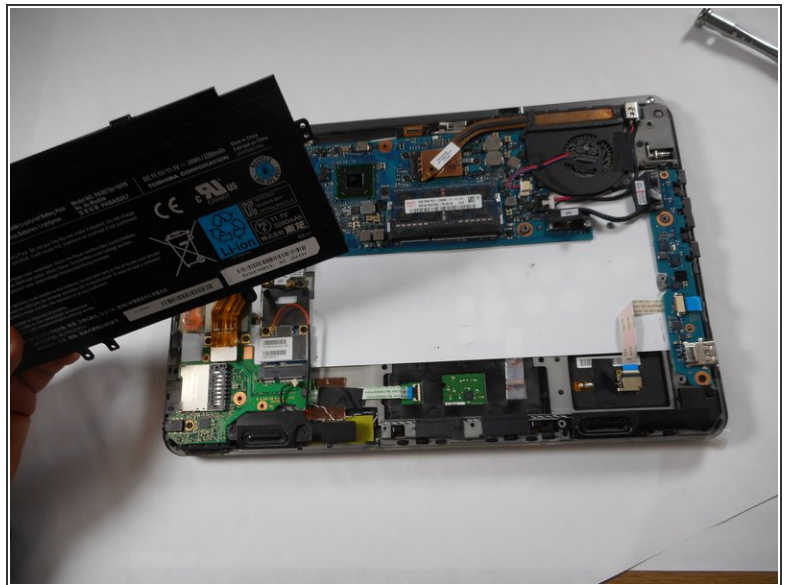
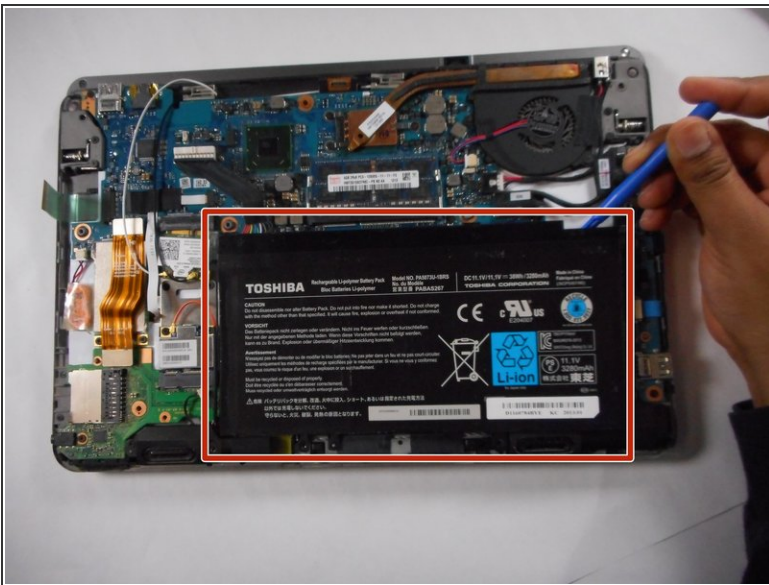
- Use the screwdriver to remove the two 3.4 mm screws highlighted.

Step 5



- Remove the black cable from the connector. Pull in the same direction as the black wiring runs.
⚠ Excessive force in this step may damage the wires and/or your device.

Step 6



- Lift and remove the battery from the device with the iFixit opening tool.

To reassemble your device, follow these instructions in reverse order.