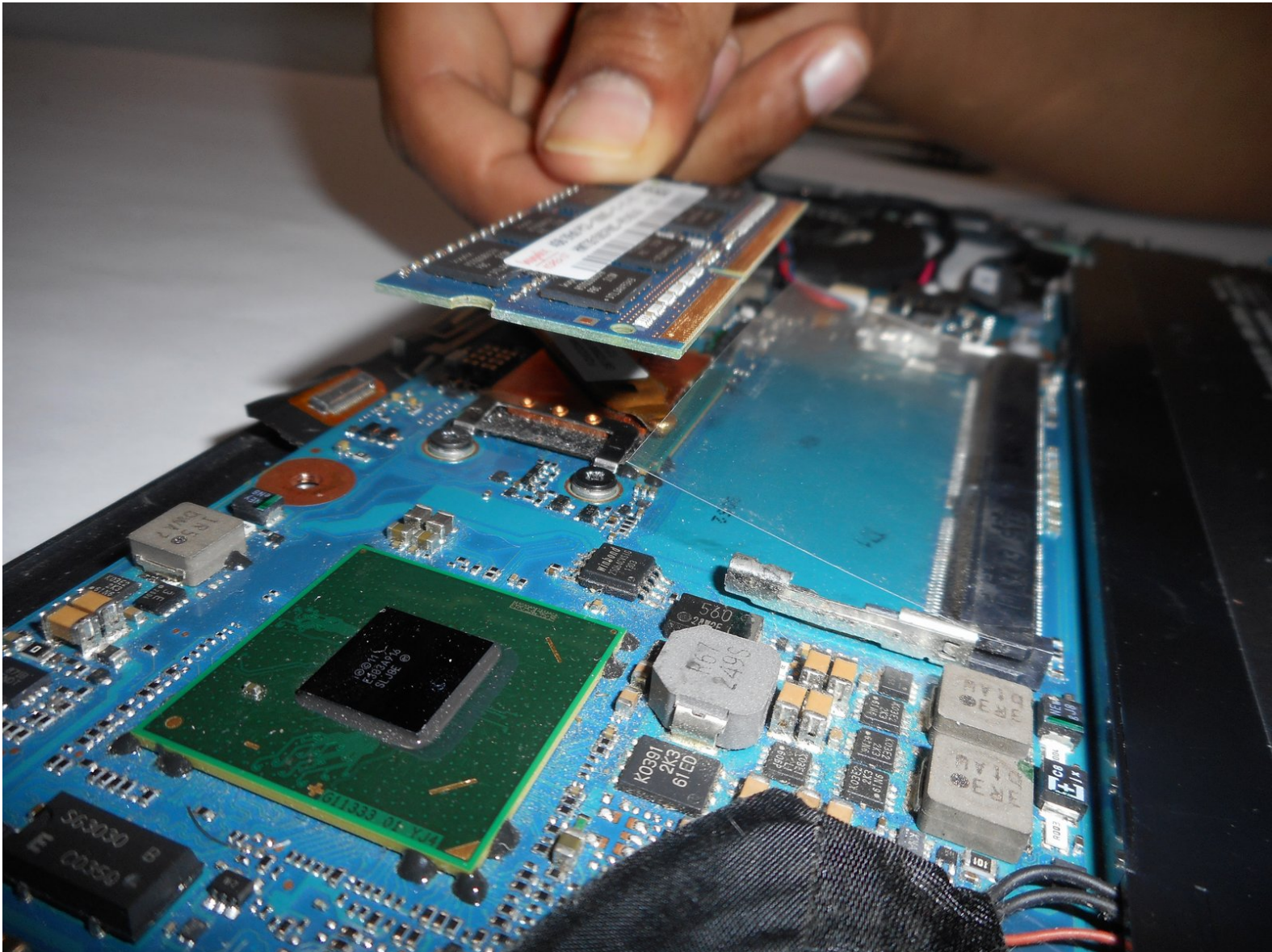




# Toshiba Satellite U925T-S2120 Hard Drive Replacement

Use this guide to replace the hard drive of a Toshiba Satellite U925T-S2120.

Written By: Terry



## INTRODUCTION

Your hard drive stores and retrieves all memory on your laptop. In this guide you will learn how to remove the hard drive of your Toshiba Satellite U925T-S2120. If your hard drive is broken, you may need to replace it. Prior to beginning this guide you should have all required tools that are listed.



### TOOLS:

- [Phillips #1 Screwdriver](#) (1)
  - [iFixit Opening Tools](#) (1)
  - [Tweezers](#) (1)
-

## Step 1 — Hard Drive



- Use tweezers to pinch and pull out and remove the nine rubber gripper pads on the back panel of the laptop. Set aside.

## Step 2



- Unscrew nine 5.8 mm screws using a PH1 screwdriver and turning clockwise.
- Use the same screwdriver to remove the two 6.8 mm screws.

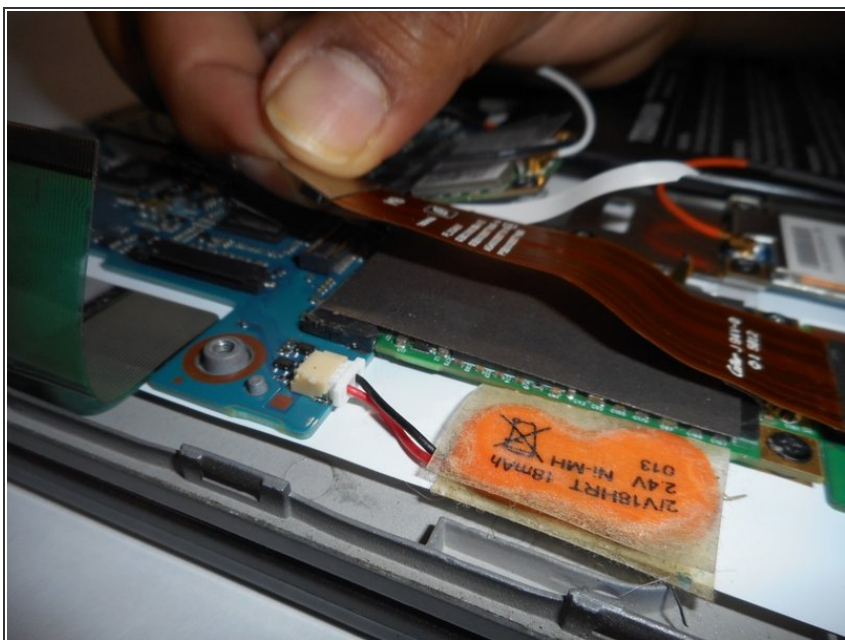


### Step 3



- Remove the back panel open by inserting the plastic opening tool into the seam of the laptop and pushing downwards. Repeat the motion around the perimeter of the device.

### Step 4



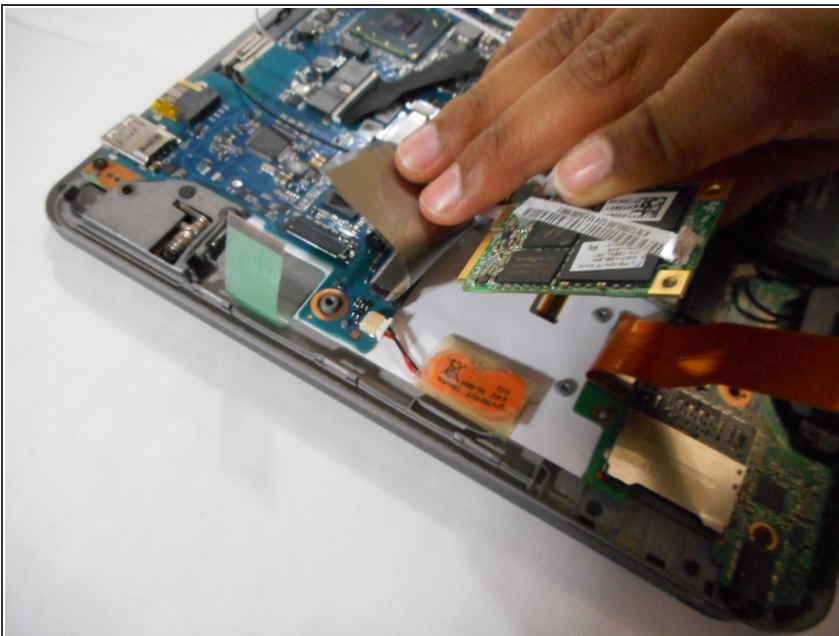
- Gently pop out the tab connected to the orange plastic strip.

## Step 5



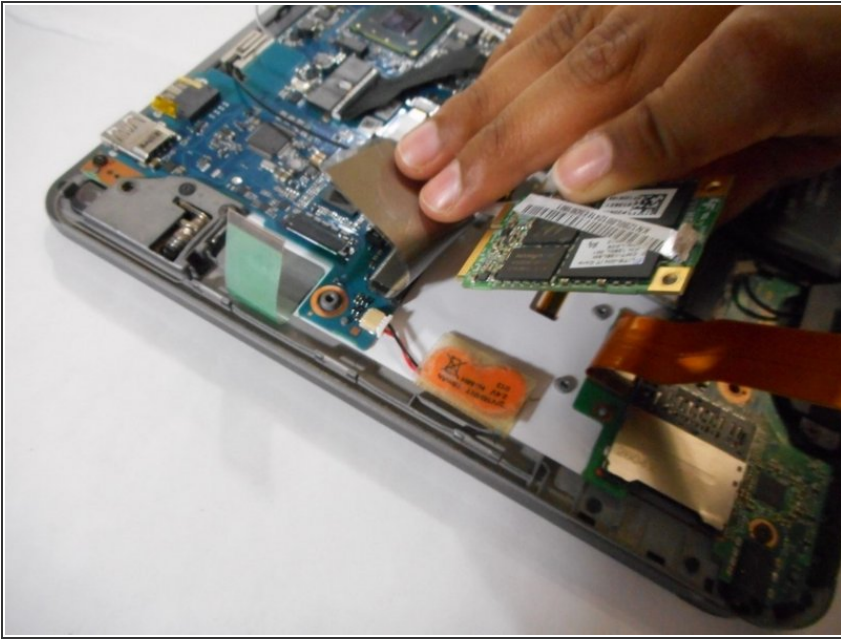
- Hold back the orange plastic strip with one hand
- Use a PH1 screwdriver to unscrew the two 3.4 mm screws by turning clockwise.

## Step 6



- Lift the silver flap away from the hard drive.
- Gently pinch and lift out the hard drive with your thumb and pointer finger.

## Step 7



- Completely remove the hard drive from the device.

To reassemble your device, follow these instructions in reverse order.