



# Toshiba Satellite c650d Hard Drive Replacement

This guide will provide steps for replacing the hard drive of a Toshiba Satellite C650D.

Written By: Brenna Callahan



## INTRODUCTION

After powering the computer up, if it appears that your profile has been deleted or you get messages about the system detecting a 'critical error', then there may be a problem with the hard drive. Following the instructions in this guide will allow you to remedy this problem by replacing the hard drive.



### TOOLS:

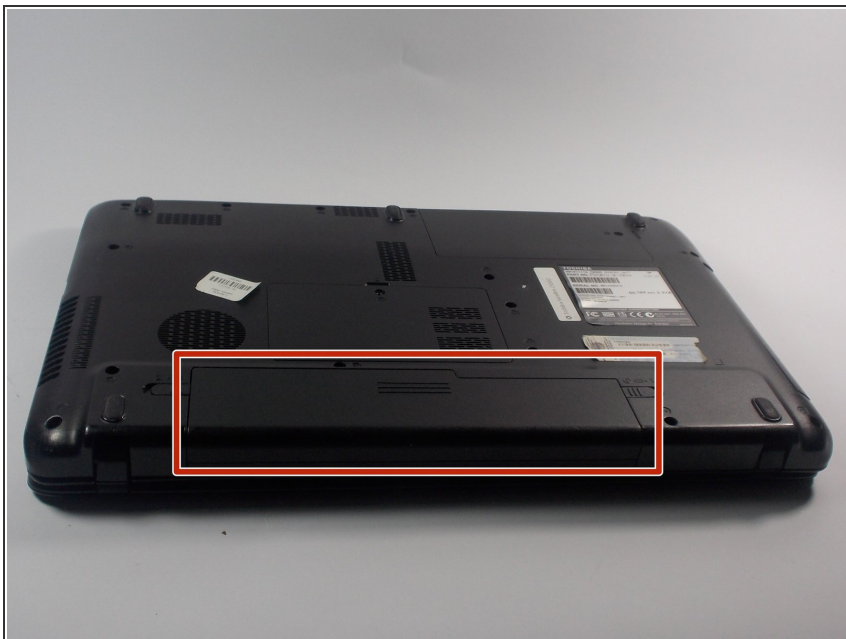
- [Anti-Static Wrist Strap](#) (1)
- [Phillips #0 Screwdriver](#) (1)



### PARTS:

- [Toshiba Satellite C650D Replacement Hard Drive](#) (1)

## Step 1 — Battery



- Unplug the laptop and turn it off.
- Flip the laptop upside down.
- Locate the battery on the underside of the laptop.

## Step 2



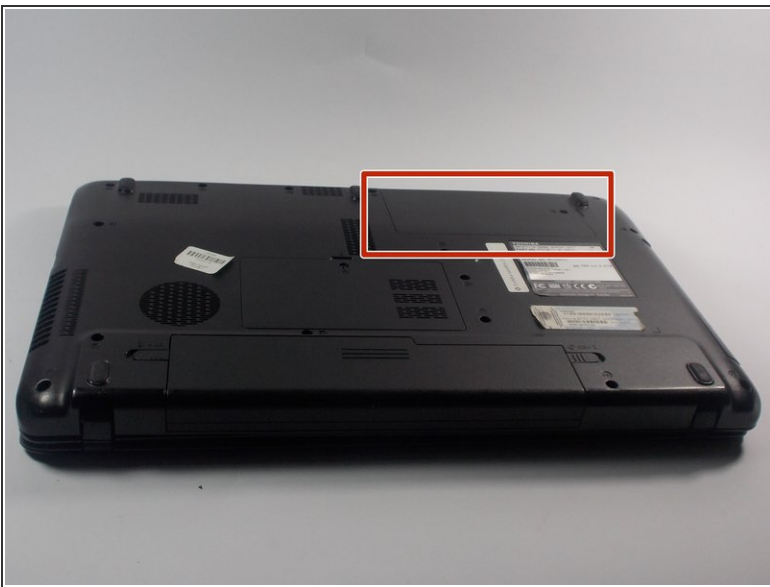
- Push the two latches away from the battery.

### Step 3



- Slide the battery away from the laptop.
- Locate the serial number on the battery to order a replacement.

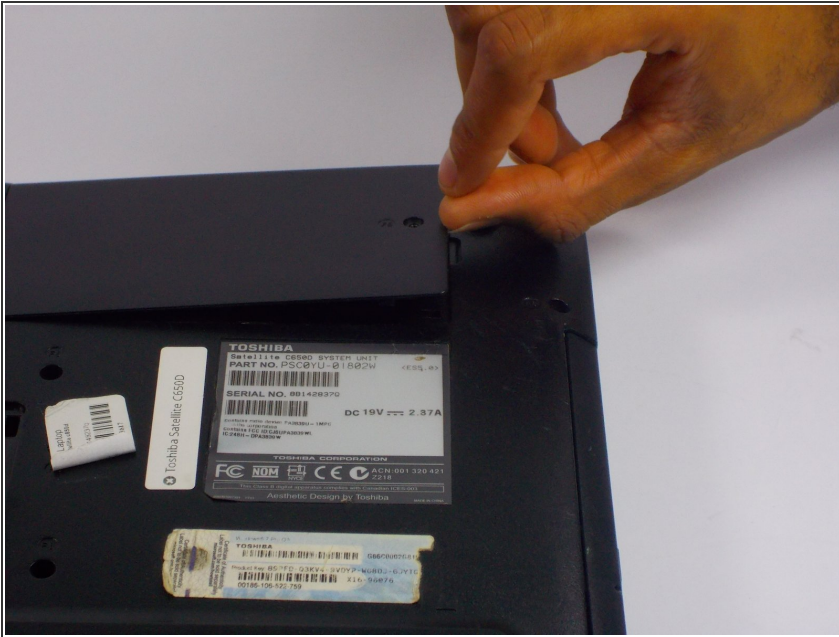
### Step 4 — Hard Drive



- Remove the one 5.0mm Philips #0 screw that holds down the panel covering the hard drive.



## Step 5



- Pull off the panel.

## Step 6



- Remove the one 3.0mm Philip's #0 screw holding the hard drive in place.

## Step 7



- Slide the hard drive out.

To reassemble your device, follow these instructions in reverse order.