



Toshiba Satellite e205 Keyboard Replacement

This guide will help you remove the keyboard.

Written By: Tyler



INTRODUCTION

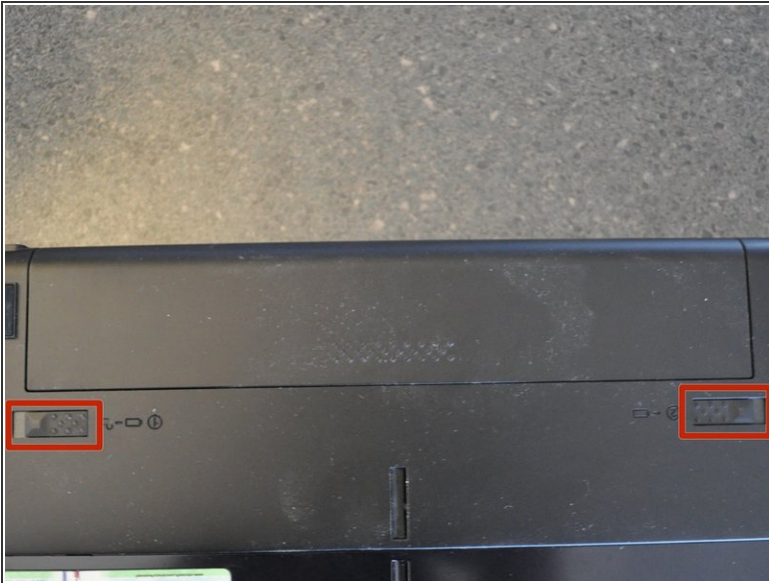
The keyboard needs to be removed to access everything (hard drive, optical drive, RAM, motherboard).



TOOLS:

- [Spudger](#) (1)
 - [Phillips #0 Screwdriver](#) (1)
-

Step 1 — Battery



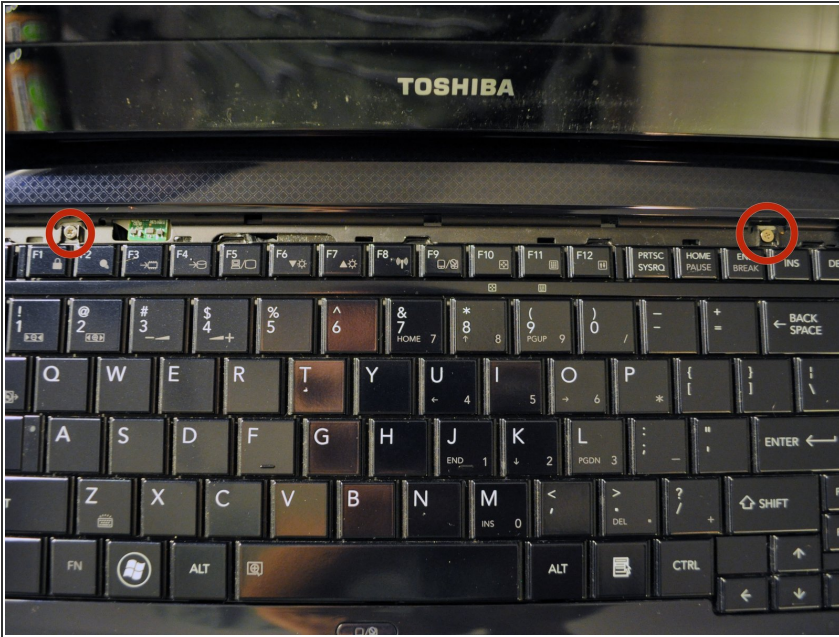
- With the battery away from you, slide the locking clips out.
 - ⓘ The left clip stays, the right clip is spring loaded.
- Slide the battery away from you.

Step 2 — Keyboard



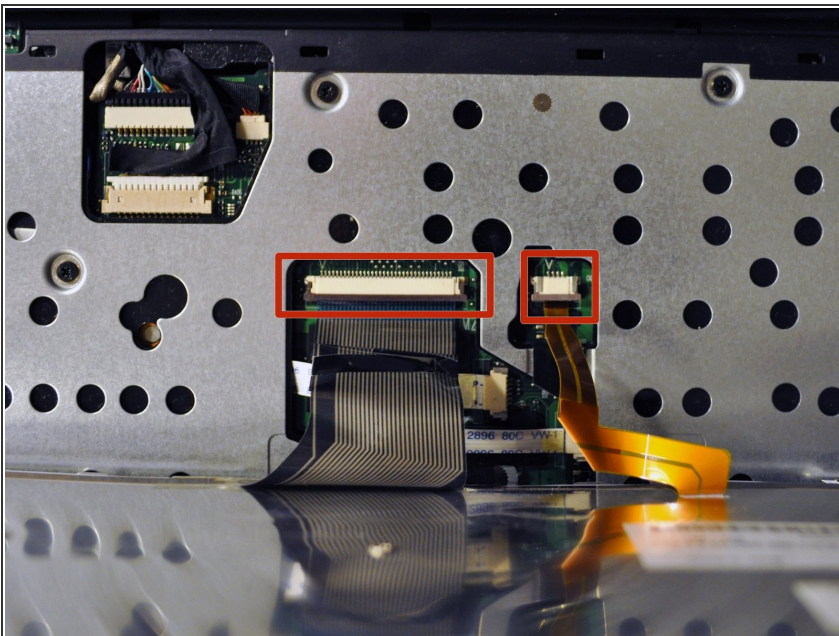
- Use a spudger to carefully pry up the keyboard screw cover.

Step 3



- Remove the two screws securing the keyboard to the chassis.

Step 4



- Carefully tilt the keyboard towards you and release the ribbon cables.
- Use a spudger if needed to release the latch. The latch slides out.
- The keyboard is now free and can be set aside.

To reassemble your device, follow these instructions in reverse order.