

A detailed photograph of a laptop's internal components, showing the motherboard, RAM, hard drive, fan, and various connectors. The components are labeled with part numbers and barcodes. The motherboard is green and populated with various chips, capacitors, and connectors. A large black fan is visible on the right side. A silver hard drive is mounted in the center. Two RAM modules are installed in the memory slots. The laptop is open, and the internal components are clearly visible. The background is a dark, textured surface. The image is oriented horizontally, with the laptop's hinge on the left and the rear panel on the right. The components are arranged in a compact, organized manner. The lighting is even, highlighting the details of the hardware. The overall appearance is that of a well-maintained, professional-grade electronic device. The image is a high-resolution photograph, providing a clear view of the internal components. The labels and barcodes are legible, allowing for identification of the parts. The image is a valuable resource for anyone interested in laptop repair or hardware. It provides a comprehensive view of the internal architecture of a laptop, showing the connection between various components. The image is a testament to the complexity and precision of modern electronics. It is a detailed and informative photograph that provides a clear and accurate representation of a laptop's internal components. The image is a high-quality photograph that is suitable for use in technical documents, repair guides, and other educational materials. It is a valuable resource for anyone working with laptops. The image is a detailed and informative photograph that provides a clear and accurate representation of a laptop's internal components. The image is a high-quality photograph that is suitable for use in technical documents, repair guides, and other educational materials. It is a valuable resource for anyone working with laptops. The image is a detailed and informative photograph that provides a clear and accurate representation of a laptop's internal components. The image is a high-quality photograph that is suitable for use in technical documents, repair guides, and other educational materials. It is a valuable resource for anyone working with laptops.

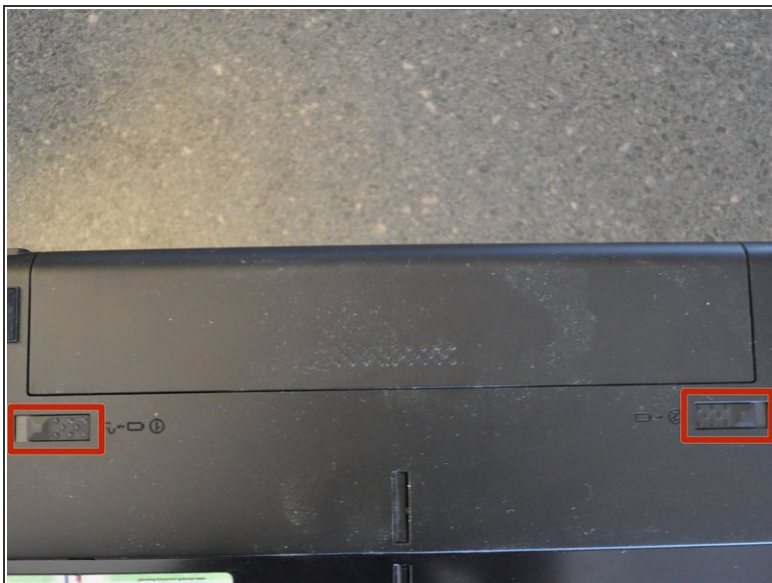
Page 1 of 13



TOOLS:

- [Phillips #0 Screwdriver](#) (1)
 - [Spudger](#) (1)
-

Step 1 — Battery



- With the battery away from you, slide the locking clips out.
 - ⓘ The left clip stays, the right clip is spring loaded.
- Slide the battery away from you.

Step 2 — Keyboard



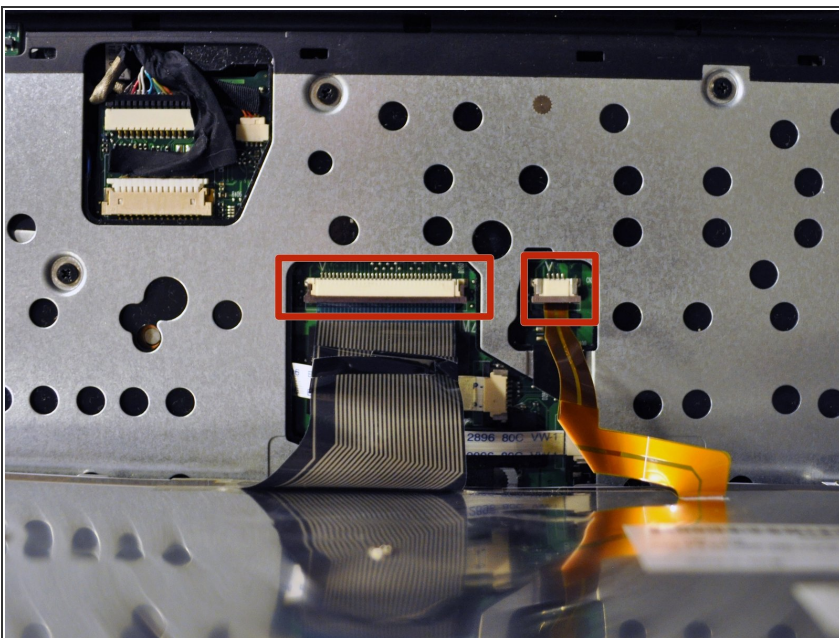
- Use a spudger to carefully pry up the keyboard screw cover.

Step 3



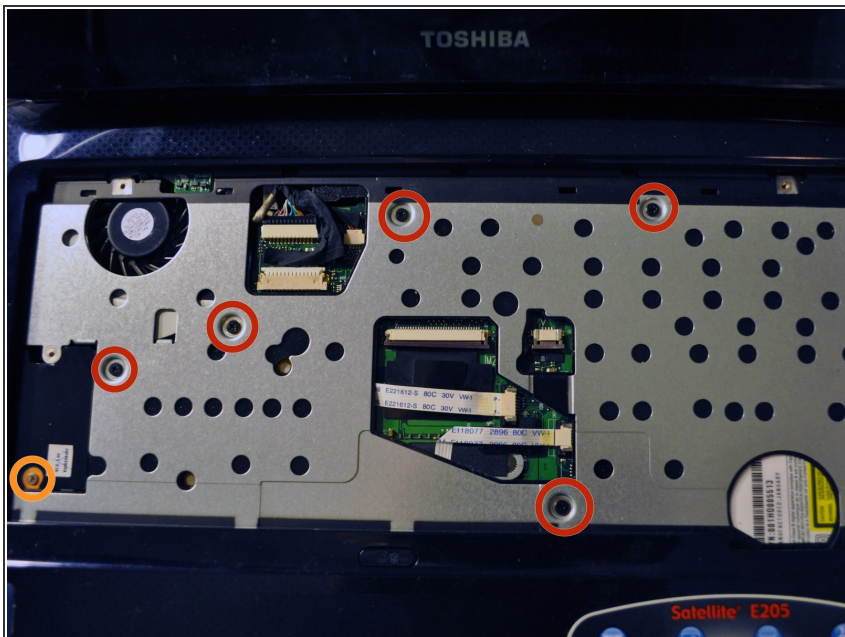
- Remove the two screws securing the keyboard to the chassis.

Step 4



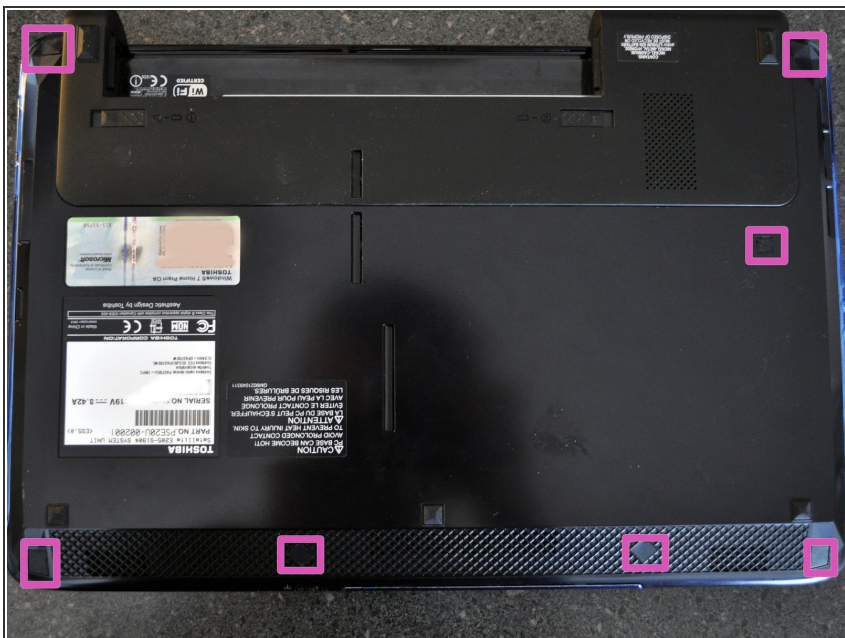
- Carefully tilt the keyboard towards you and release the ribbon cables.
- Use a spudger if needed to release the latch. The latch slides out.
- The keyboard is now free and can be set aside.

Step 5 — Bottom Cover



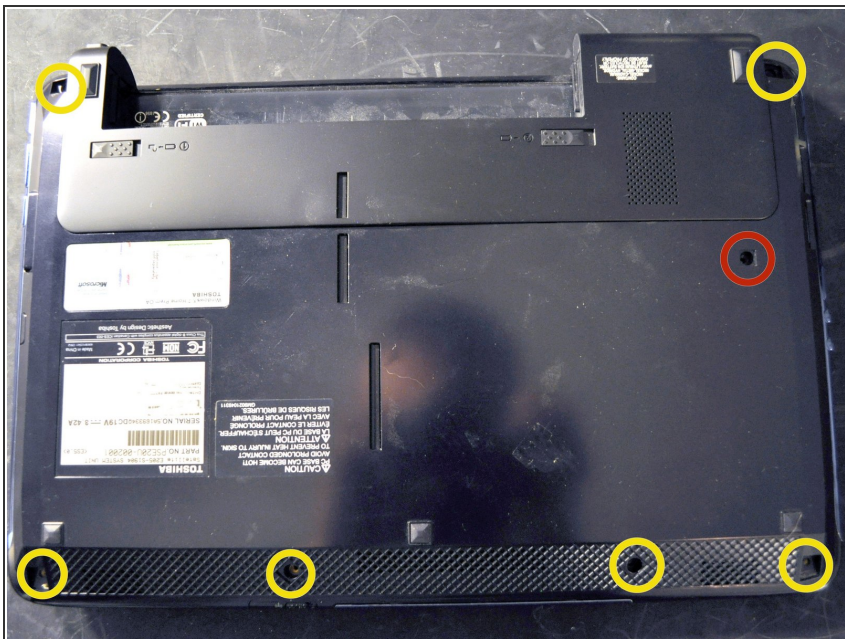
- Remove the five black screws
- Remove the one silver screw

Step 6



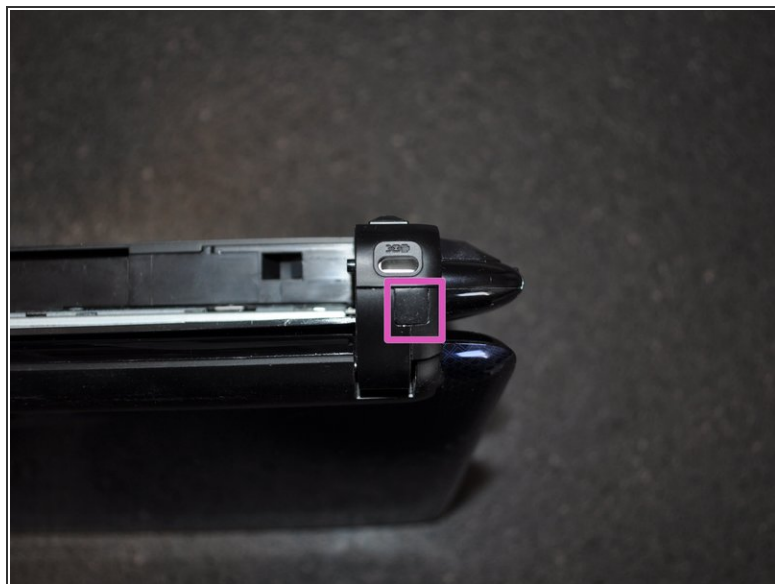
- Flip the laptop over so the bottom is facing up.
- Using a spudger, remove the seven rubber inserts.
- ⓘ The feet only go in one location on the bottom of the laptop, so save yourself some time and track where they go.

Step 7



- Remove the six silver screws.
- Remove the one black screw.

Step 8



- Stand the laptop up on end.
- Remove the two rubber inserts from the back of the laptop. One insert is on each side of the laptop.

Step 9



- Remove the two screws.

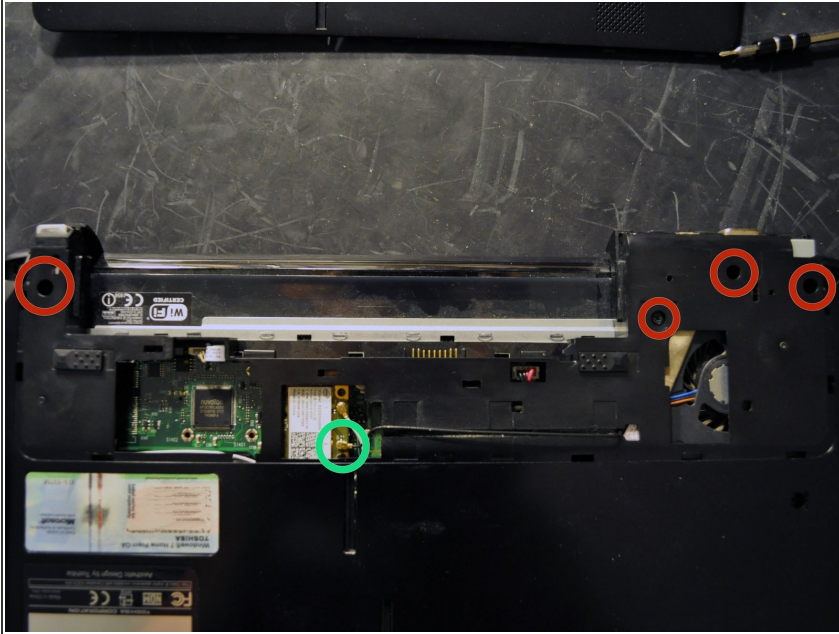
Step 10



- Carefully work a spudger in the crack at the back of the laptop and separate the small rubberized

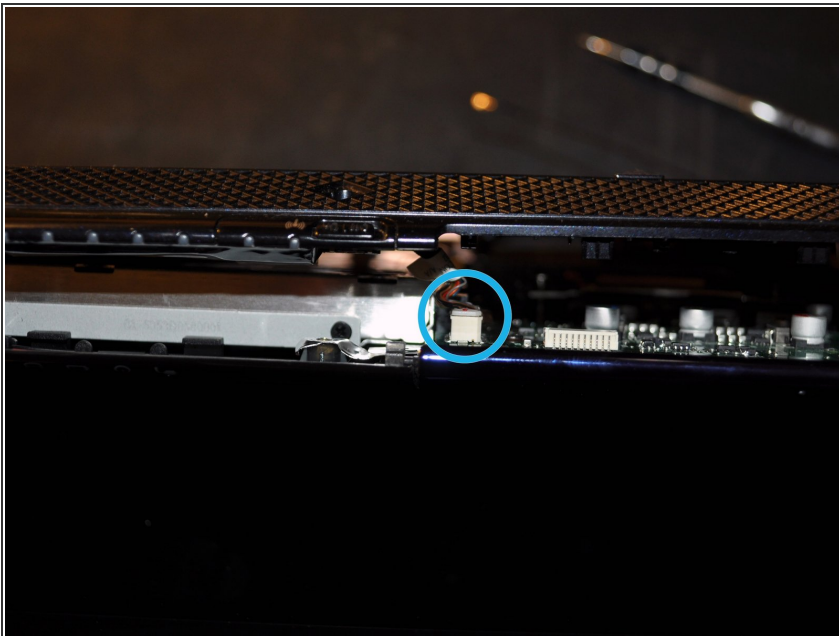
section from the bottom of the laptop.

Step 11



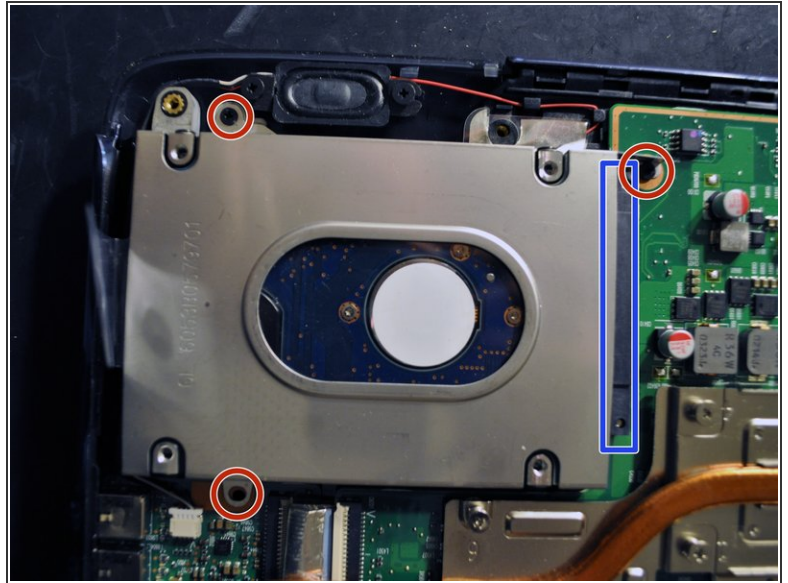
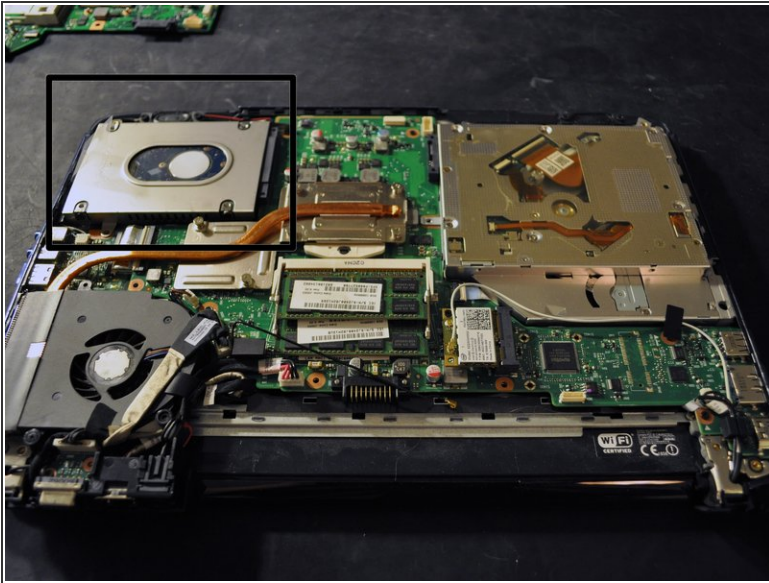
- Remove the four screws.
- Disconnect the black wireless antenna lead.

Step 12



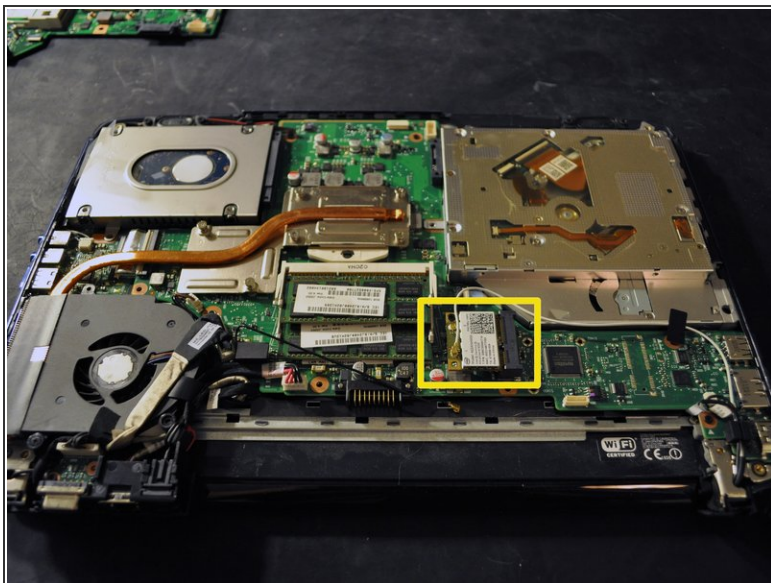
- The bottom of the laptop is now ready to lift off.
- Carefully work a spudger around the seam of the laptop separating the bottom from the rest of the laptop.
- ⚠ There is a data connection at the front of the laptop that needs to be disconnected.
- Use a spudger to carefully disconnect the wire from the motherboard. Once this is free the bottom will come off.

Step 13 — Hard Drive



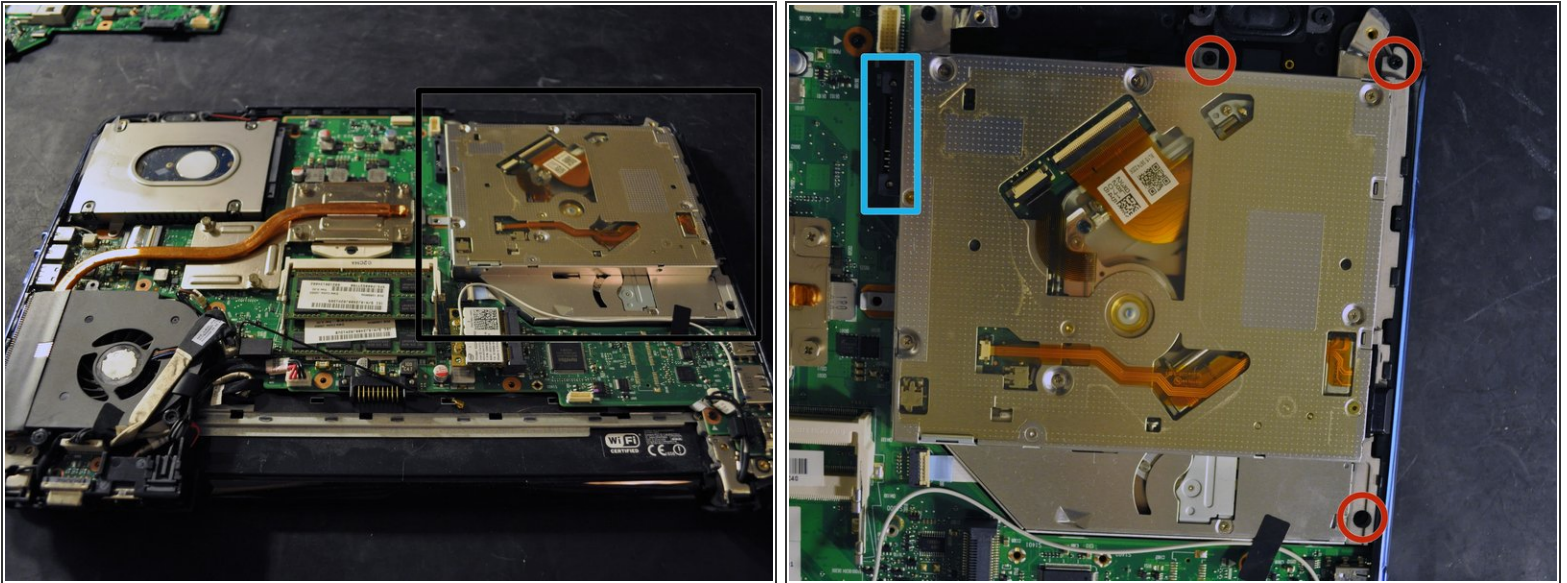
- Locate the hard drive.
- Remove the three screws.
- Slide the hard drive out away from the motherboard connector.
 - Once the hard drive is disconnected it lifts out.

Step 14 — Wireless Card



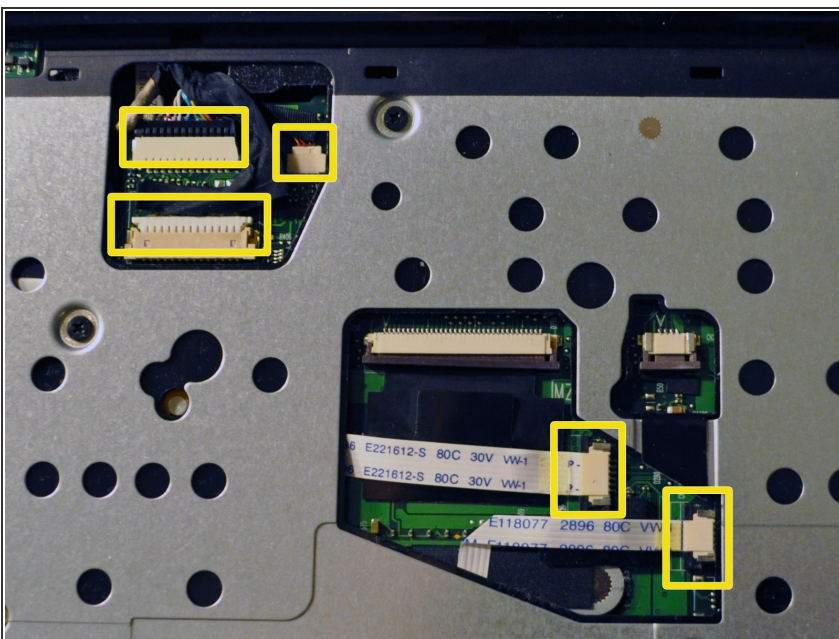
- Locate the wireless card.
- Remove the white antenna lead.
- Remove the single screw.
- Lift the card up from the edge with the screw, and pull out.

Step 15 — Optical Drive



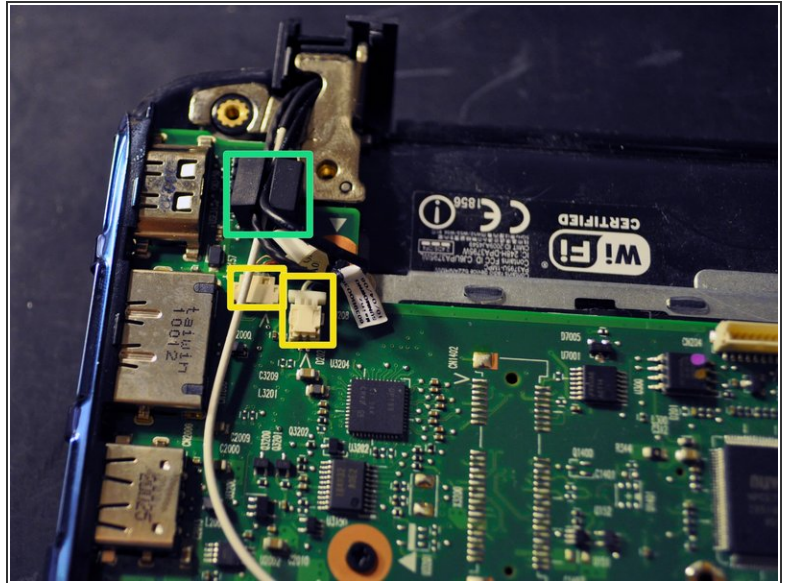
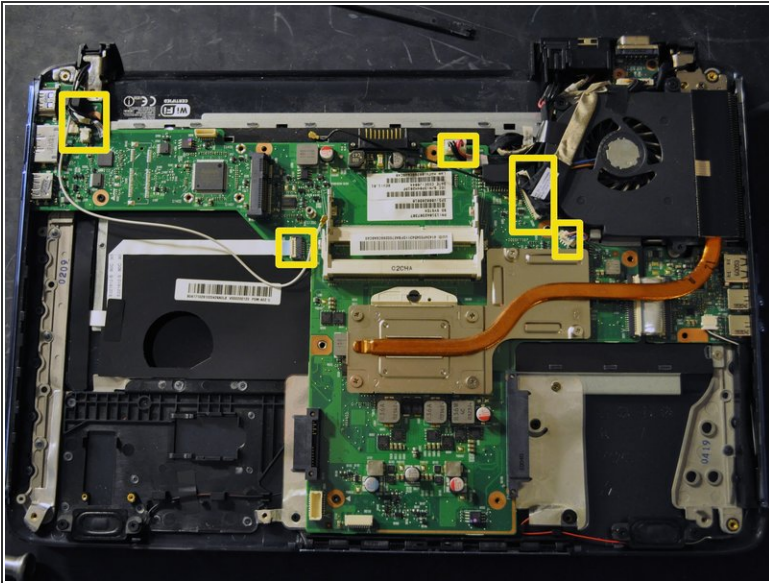
- Locate optical drive
- Remove the three screws securing the optical drive.
- Slide the optical drive away from the motherboard, and carefully lift up.

Step 16 — Motherboard



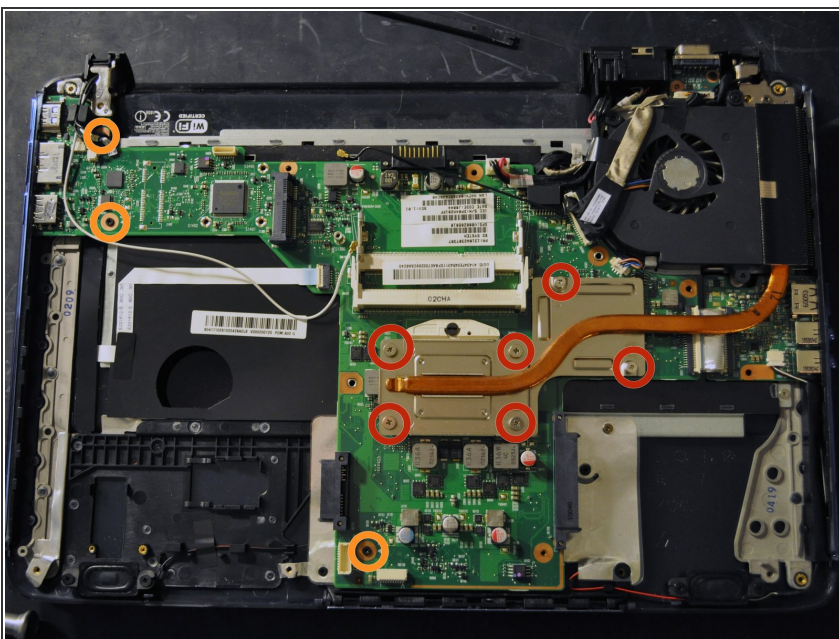
- Carefully flip the laptop rightside up and open the lid.
- Disconnect the cables from the motherboard.

Step 17



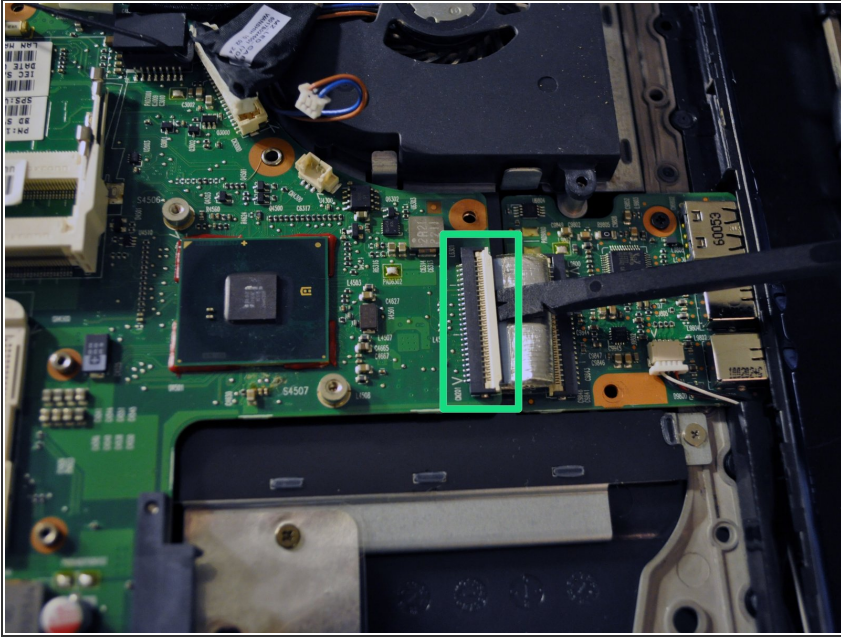
- Close the laptop lid, and flip back over so you see the motherboard.
- Disconnect all cables from the motherboard.
- This wire holder is stuck on with a little glue and should lift right off.

Step 18



- Remove the heatsink screws. And lift up the heatsink.
- ⓘ The screws remain attached to the heatsink.
- Remove the three screws holding the motherboard to the chassis.

Step 19



- Lift up on ribbon cable latch.
- Gently disconnect ribbon cable from motherboard.
- The motherboard should lift out.

To reassemble your device, follow these instructions in reverse order.