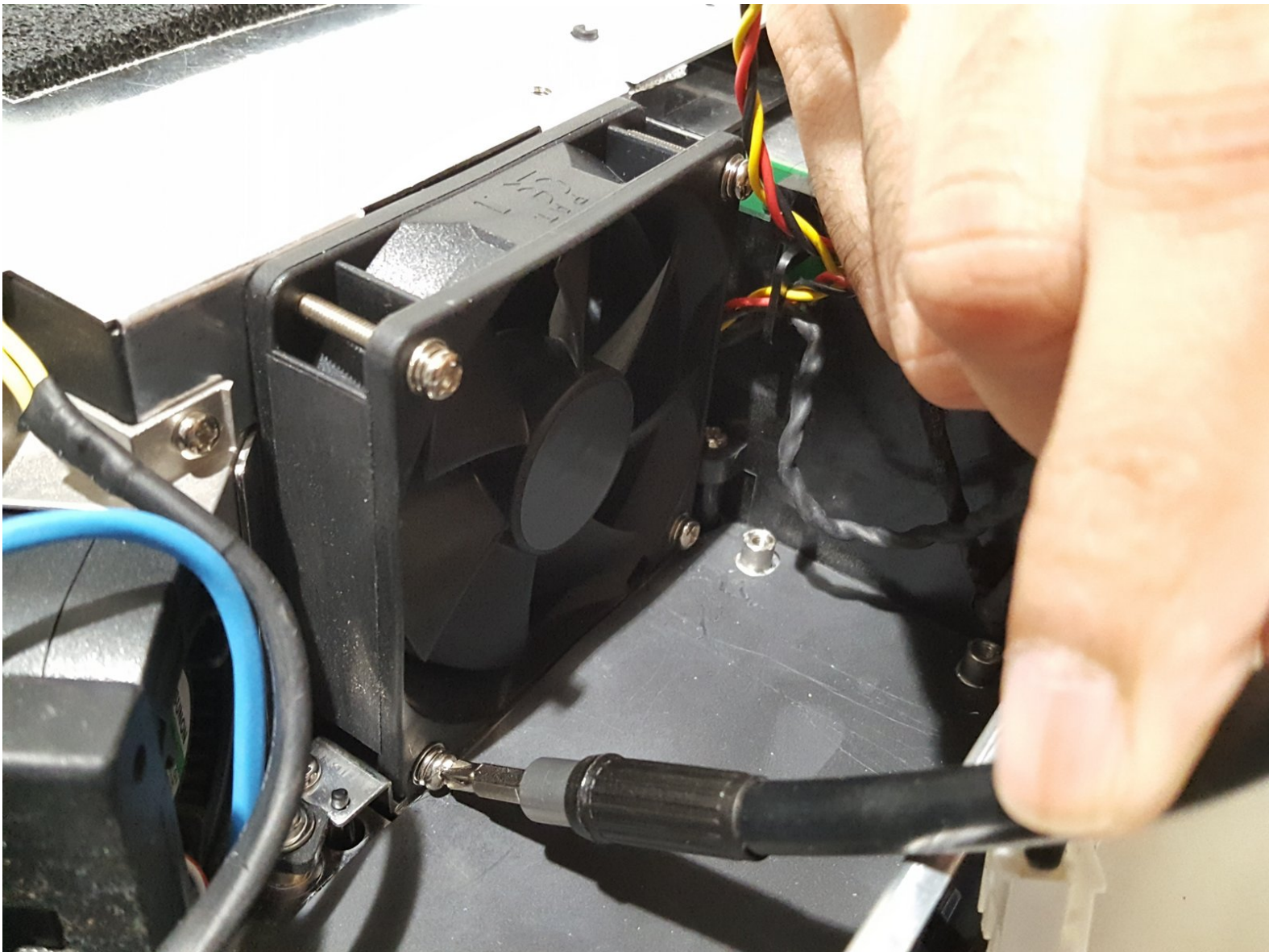




Toshiba TDP-XP2 Fan Replacement

This will show how to replace a fan on a Toshiba XP2 projector.

Written By: Bryan Underwood



INTRODUCTION

If a fan stops working all together on this device, then replacing it can be a good way to save money over buying a new projector. This guide will show how to get to and replace this part.



TOOLS:

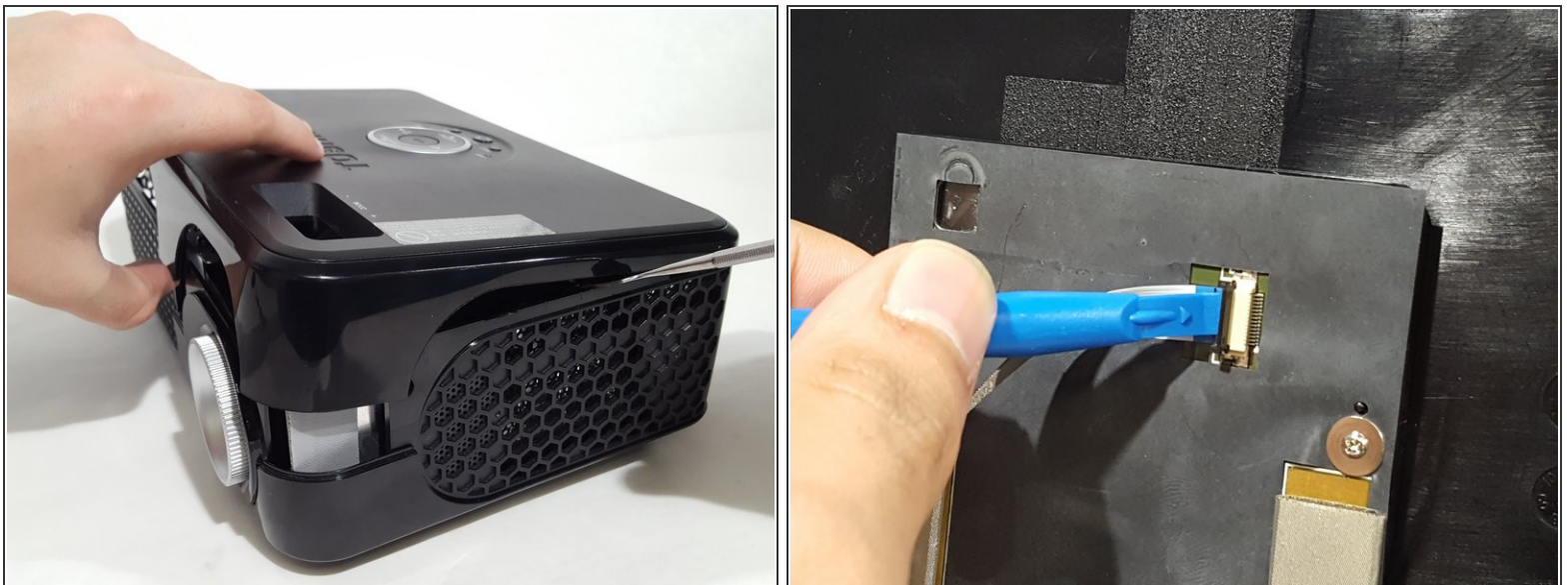
- [5mm Allen Hex Socket](#) (1)
 - [Phillips #2 Screwdriver](#) (1)
 - [Metal Spudger](#) (1)
 - [Phillips #0 Screwdriver](#) (1)
-

Step 1 — Fan



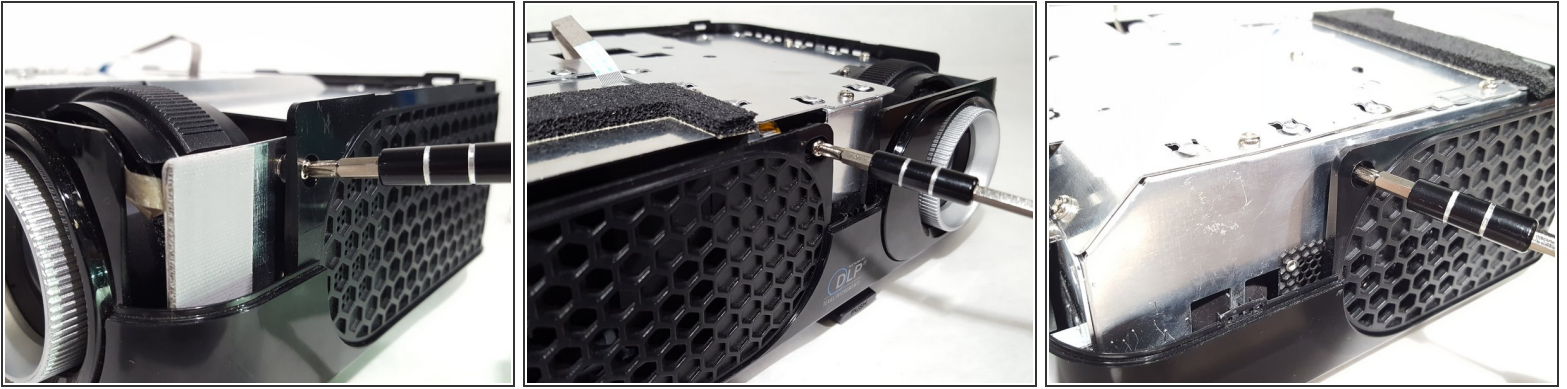
- Start by removing the two screws on the bottom of the device as shown.

Step 2



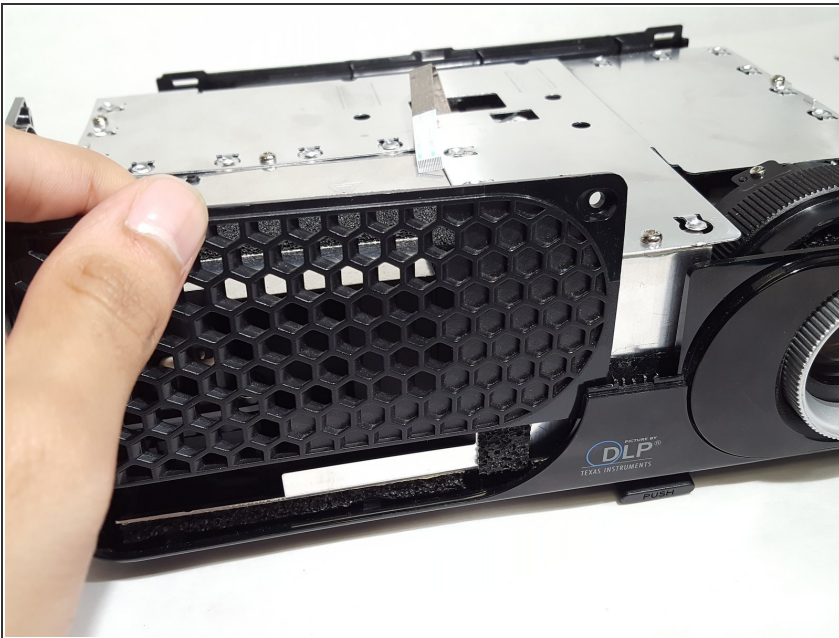
- Remove the top plastic cover from the device. The back is snapped on so it would help to have leverage from a prying tool.
- Remove the ribbon cable attached to the plastic piece just removed. Remember its orientation for re-assembling later.

Step 3



- Remove the screws from the case located around the device.

Step 4



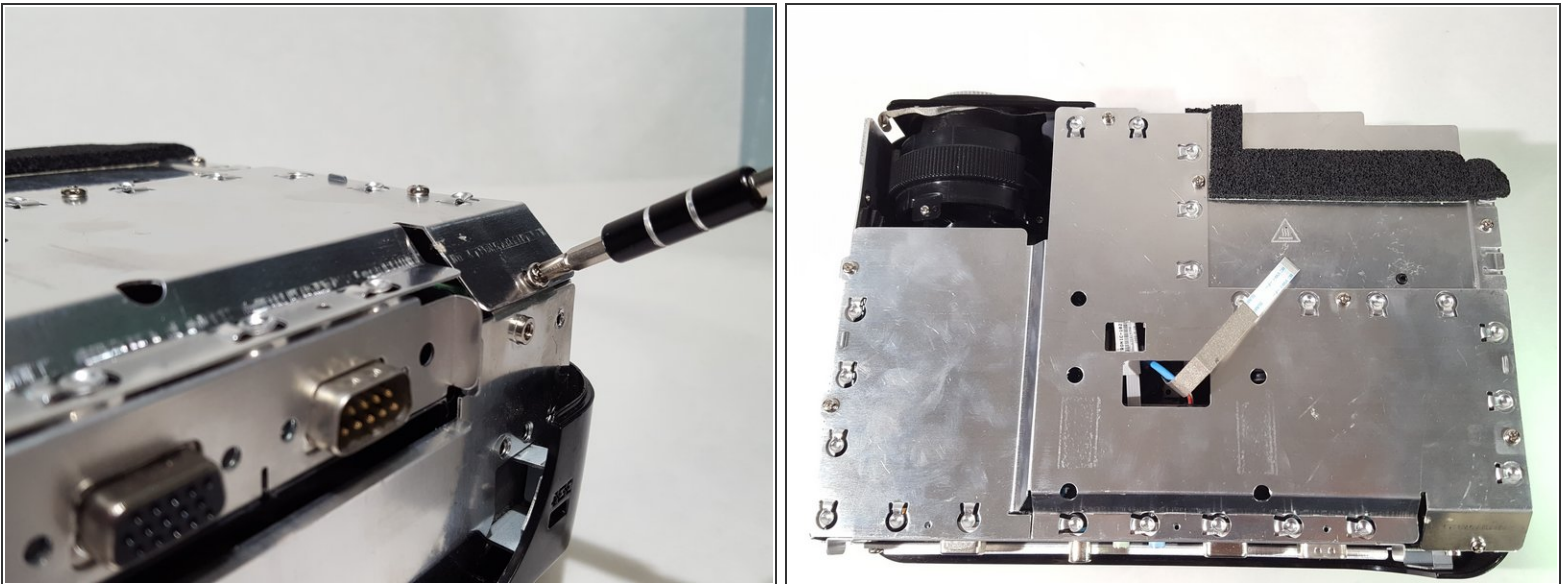
- Remove the plastic panels from the body.

Step 5



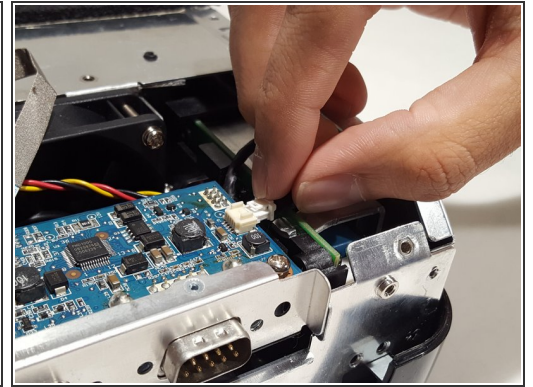
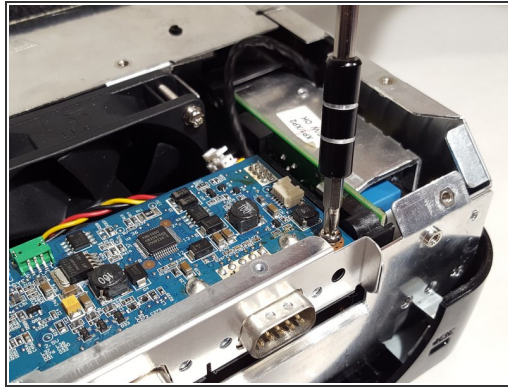
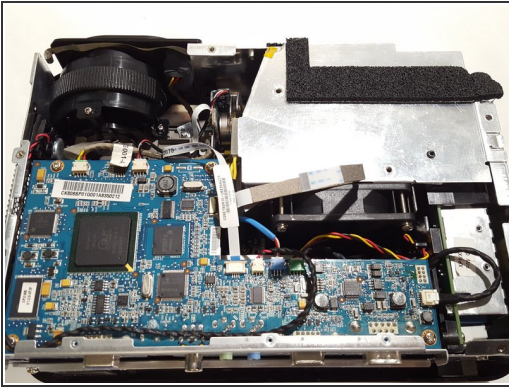
- Remove the screws from the IO panel.
- Pull up on the panel and remove it.

Step 6



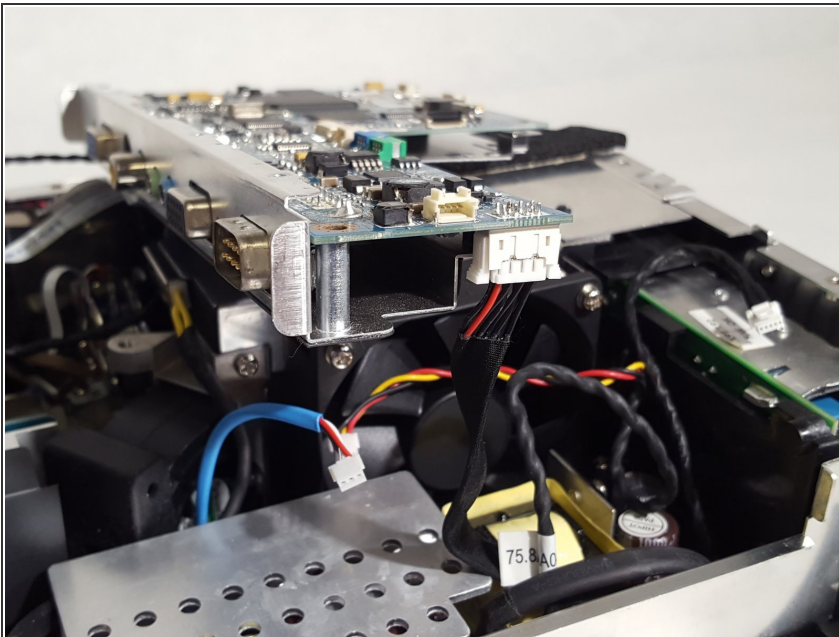
- Unscrew the screws from the metal shielding to remove it.

Step 7



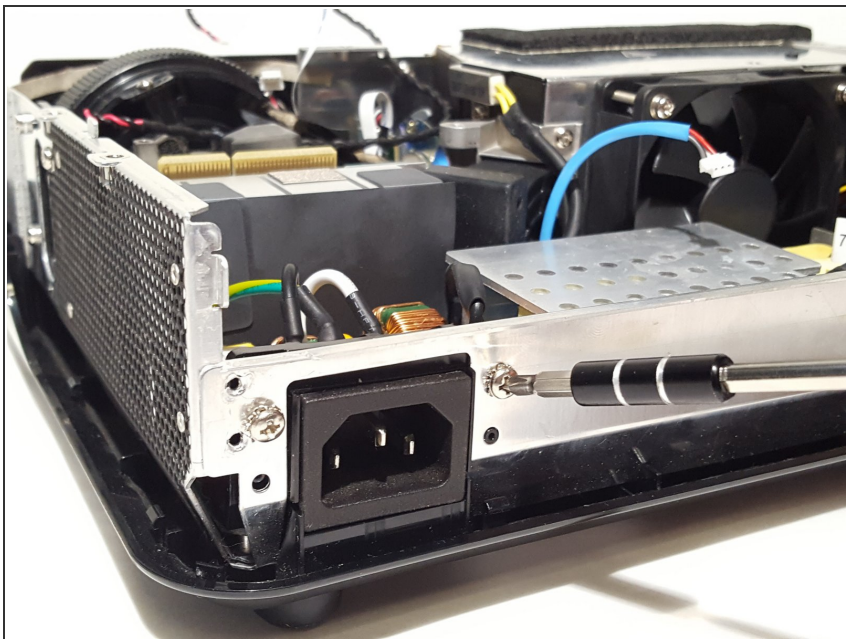
- Remove cables from motherboard.
- Unscrew motherboard and remove from device.

Step 8



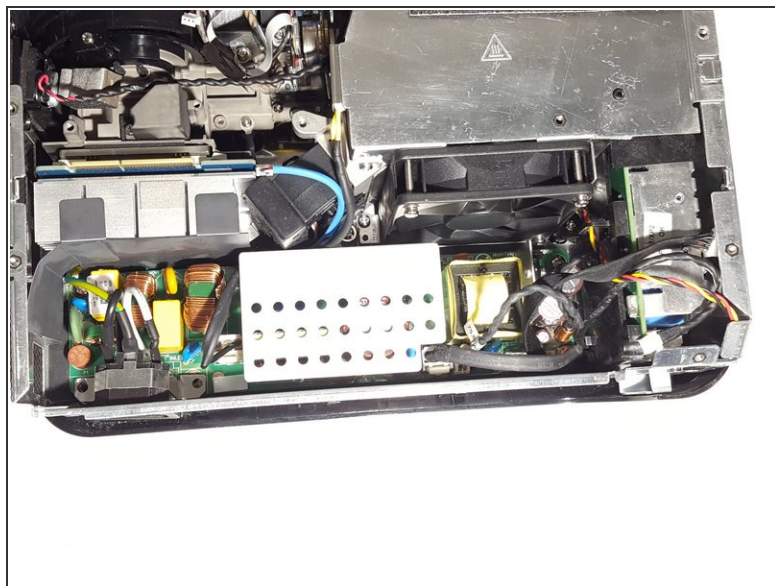
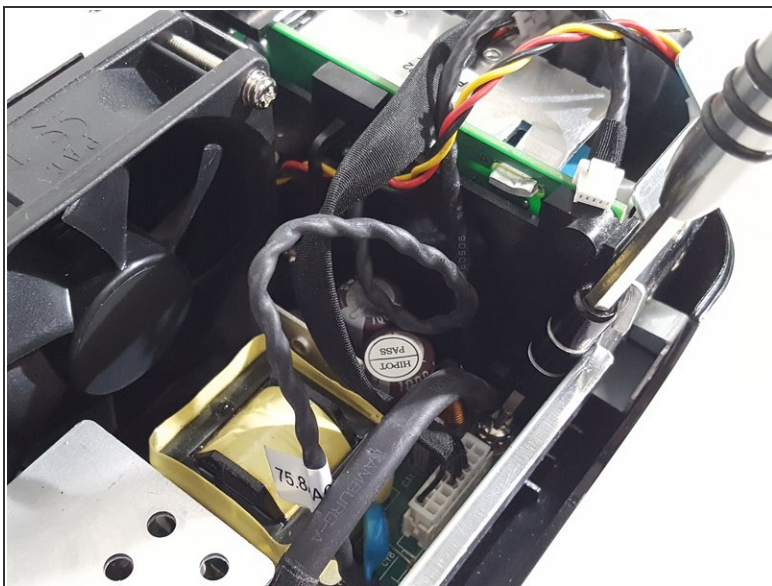
- Remove the cable from the bottom of the motherboard to fully remove it.

Step 9



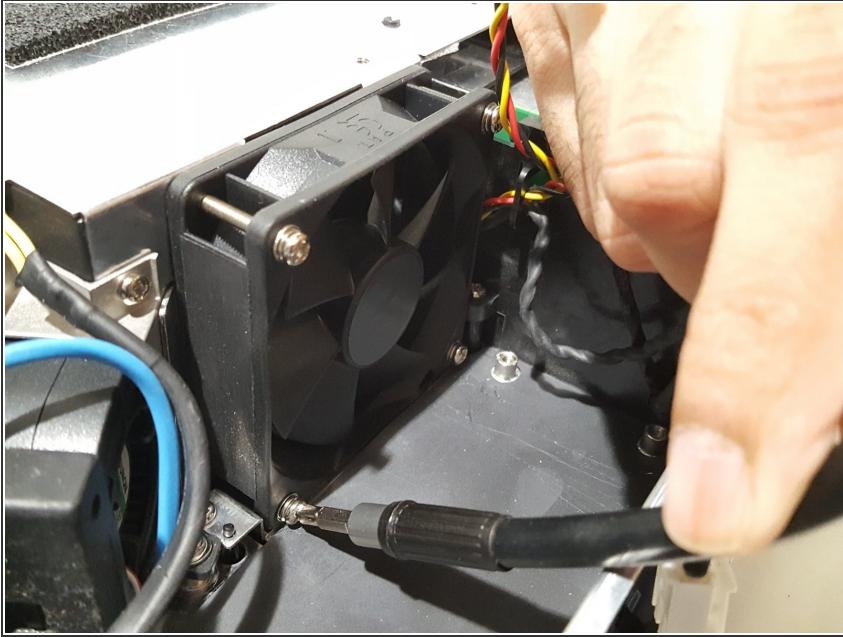
- Unscrew the power adapter on the back.

Step 10



- Remove cables from the power supply board.
- Remove the screws located around the board to un-mount it.

Step 11



- Remove the power board to reveal the bottom two screws to the fan.
- Unscrew the fan and replace it with an equivalent one.

To reassemble your device, follow these instructions in reverse order.