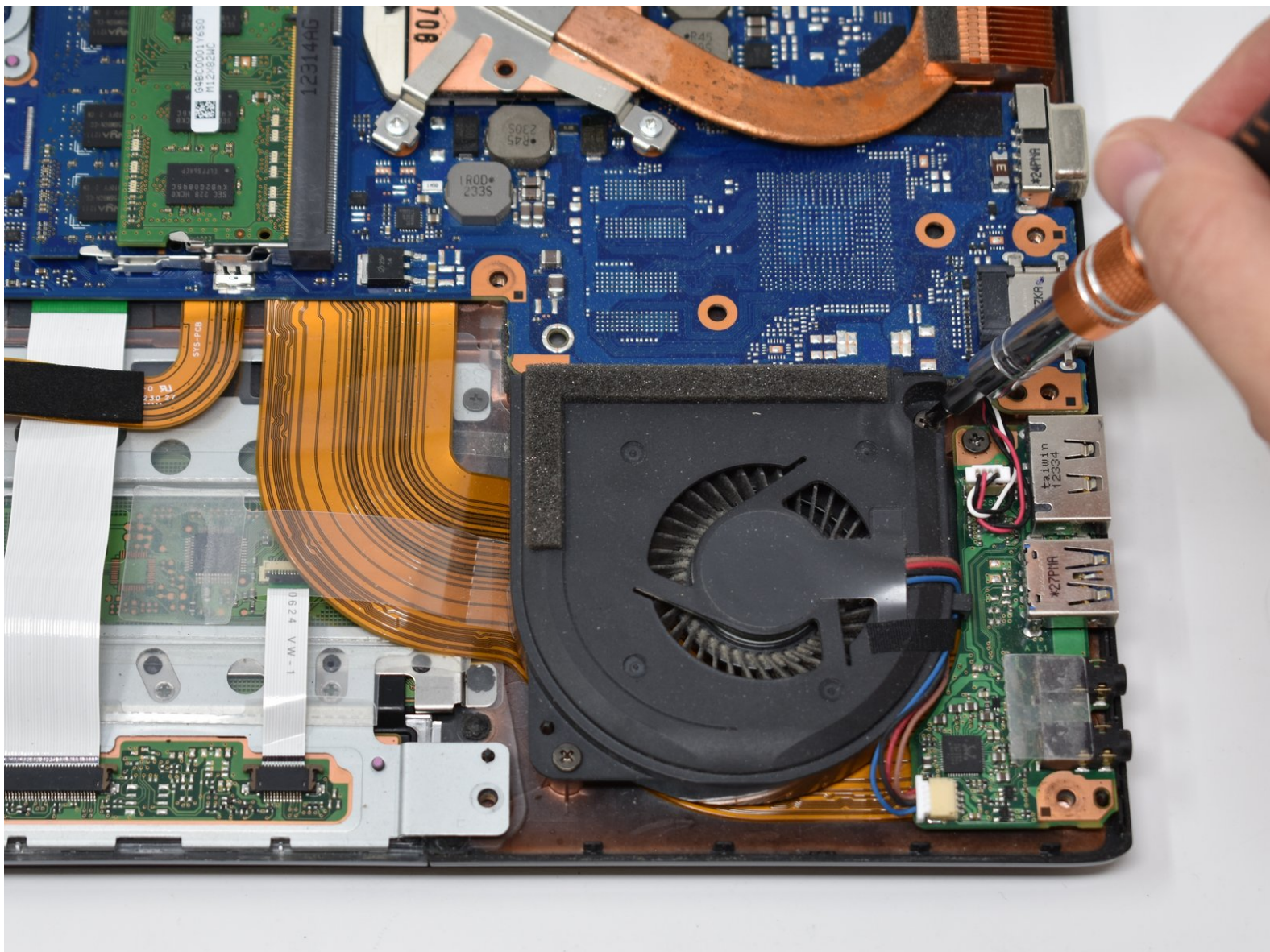




# Toshiba TECRA R940 Fan Replacement

Replace the CPU cooling fan in the Toshiba Tecra R940 S9421.

Written By: Holly Strauch



---

## INTRODUCTION

The CPU cooling fan is simple to replace and may need to be removed if the motherboard is replaced.

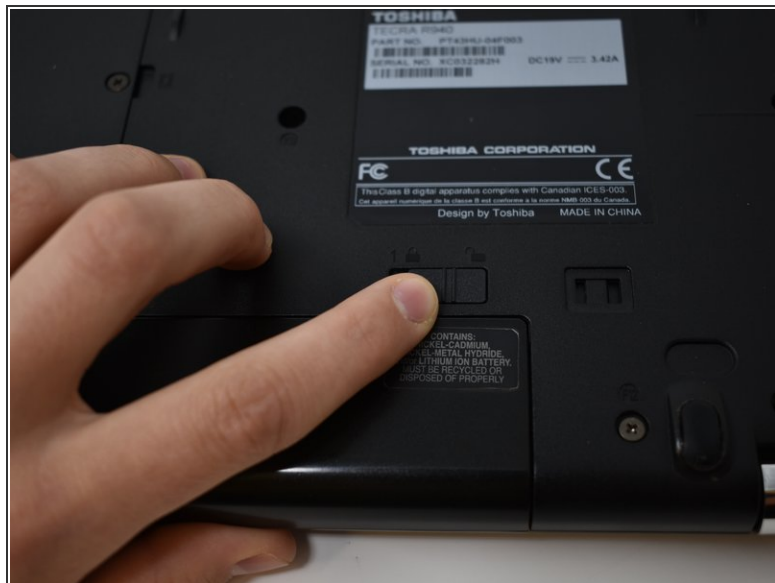
---



### TOOLS:

- [Phillips #0 Screwdriver](#) (1)
  - [iFixit Opening Tools](#) (1)
-

## Step 1 — Battery



- Slide lock 1, located on the right side, to the unlocked position.

## Step 2



- While holding lock 2 (left side) in the unlocked position, pull out the battery pack.

☑ It is not necessary to hold open lock 2 for re-installation.



## Step 3 — Back Panel



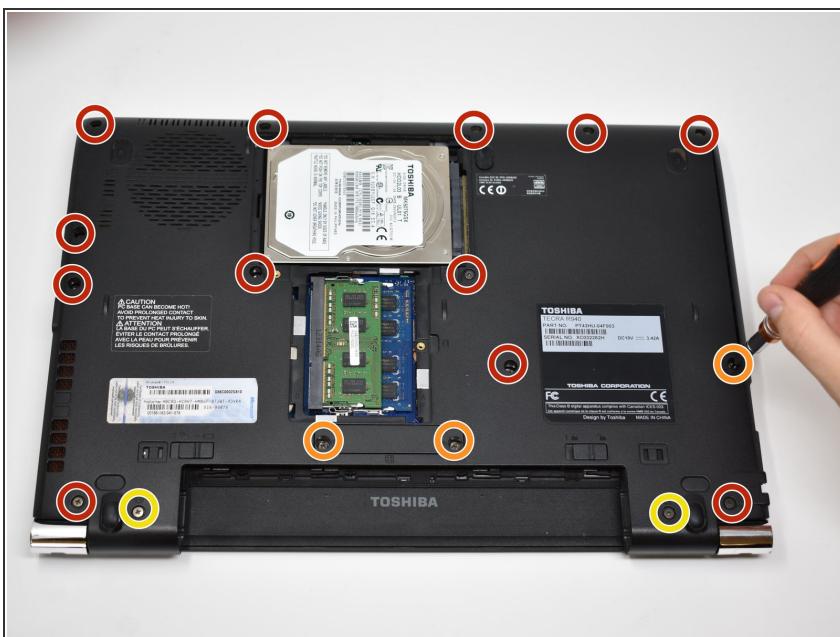
- Unscrew the single screw on the RAM access panel using a Phillips #0 screwdriver.
- ⓘ The screw will not come apart from the panel.
- Use a plastic opening tool to pry off the access panel.

## Step 4



- Remove the 11mm screw from the right side of the Hard Drive access panel using a Phillips #0 screwdriver.
- Remove the 3.5 mm screw from the left side of the access panel using a Phillips #0 screwdriver.
- Use a plastic opening tool to pry off the access panel from the bottom.

## Step 5



- Remove twelve 5.5mm screws from the main back cover using a Phillips #0 screwdriver.
- Remove three 11mm screws from main back cover and mini access panel using a Phillips #0 screwdriver.
- Remove two 9.5mm screws from the main back cover using a Phillips #0 screwdriver.

## Step 6



- Lift the hard drive out of the access panel.
- Disconnect the SATA connector from the hard drive by pulling straight out.

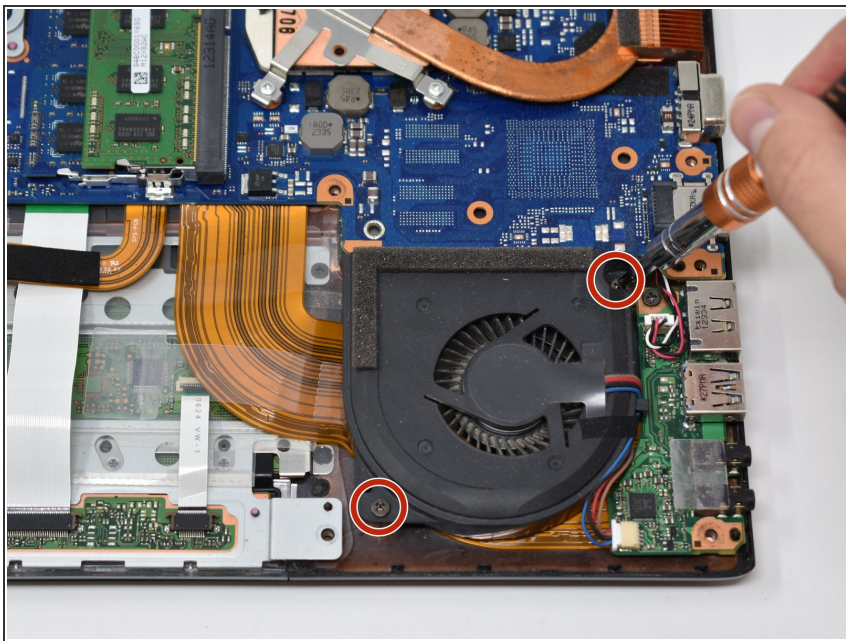
## Step 7



- Insert the plastic opening tool into the edge of the laptop and pry off the back cover.

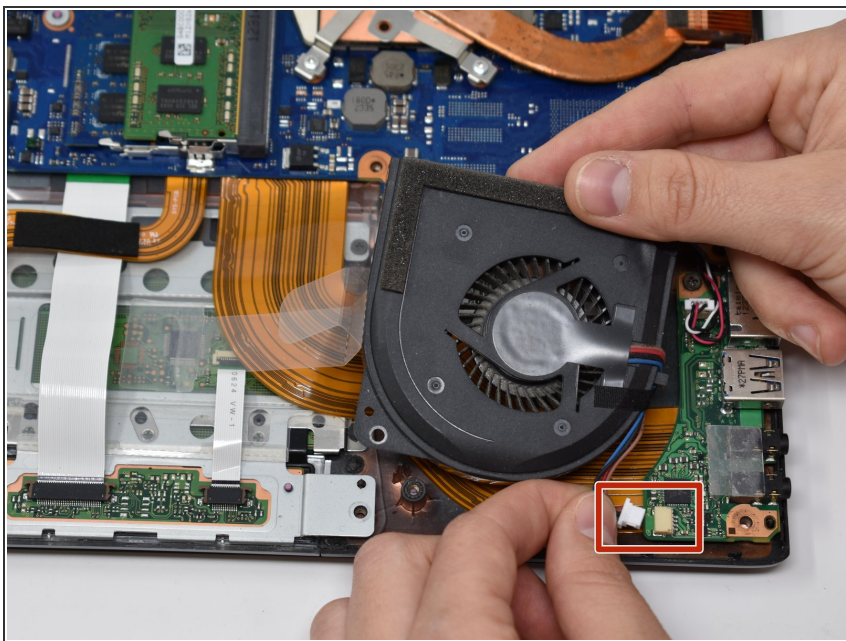


## Step 8 — Fan



- Remove two 3.5 mm screws with a Phillips #0 screwdriver from either side of the fan.

## Step 9



- Disconnect the fan from its port.

To reassemble your device, follow these instructions in reverse order.