



Toshiba TECRA R940 Keyboard Replacement

This is a guide to replacing a Toshiba TECRA R940-S9421 keyboard.

Written By: Jack Dutton



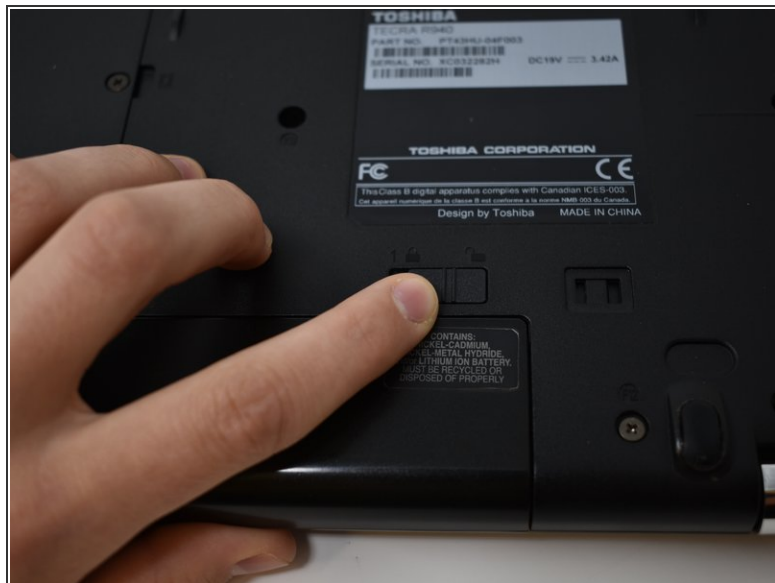
INTRODUCTION

The keyboard requires more disassembly than what may seem obvious, Luckily, this laptops keyboard is one piece and easily replaceable.

TOOLS:

- [Phillips #0 Screwdriver](#) (1)
 - [iFixit Opening Tools](#) (1)
 - [Spudger](#) (1)
-

Step 1 — Battery



- Slide lock 1, located on the right side, to the unlocked position.

Step 2



- While holding lock 2 (left side) in the unlocked position, pull out the battery pack.

☑ It is not necessary to hold open lock 2 for re-installation.

Step 3 — Back Panel



- Unscrew the single screw on the RAM access panel using a Phillips #0 screwdriver.
- ⓘ The screw will not come apart from the panel.
- Use a plastic opening tool to pry off the access panel.

Step 4



- Remove the 11mm screw from the right side of the Hard Drive access panel using a Phillips #0 screwdriver.
- Remove the 3.5 mm screw from the left side of the access panel using a Phillips #0 screwdriver.
- Use a plastic opening tool to pry off the access panel from the bottom.

Step 5



- Remove twelve 5.5mm screws from the main back cover using a Phillips #0 screwdriver.
- Remove three 11mm screws from main back cover and mini access panel using a Phillips #0 screwdriver.
- Remove two 9.5mm screws from the main back cover using a Phillips #0 screwdriver.

Step 6



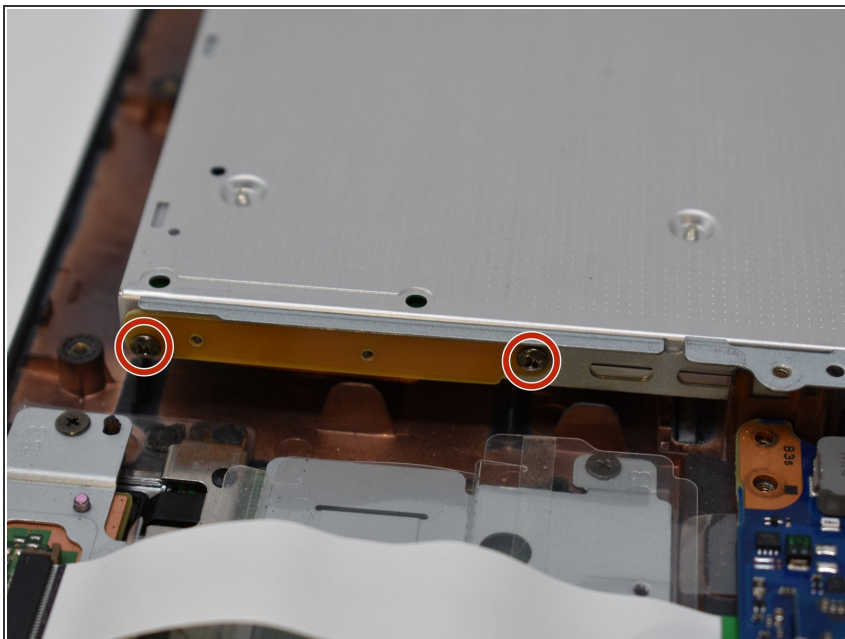
- Lift the hard drive out of the access panel.
- Disconnect the SATA connector from the hard drive by pulling straight out.

Step 7



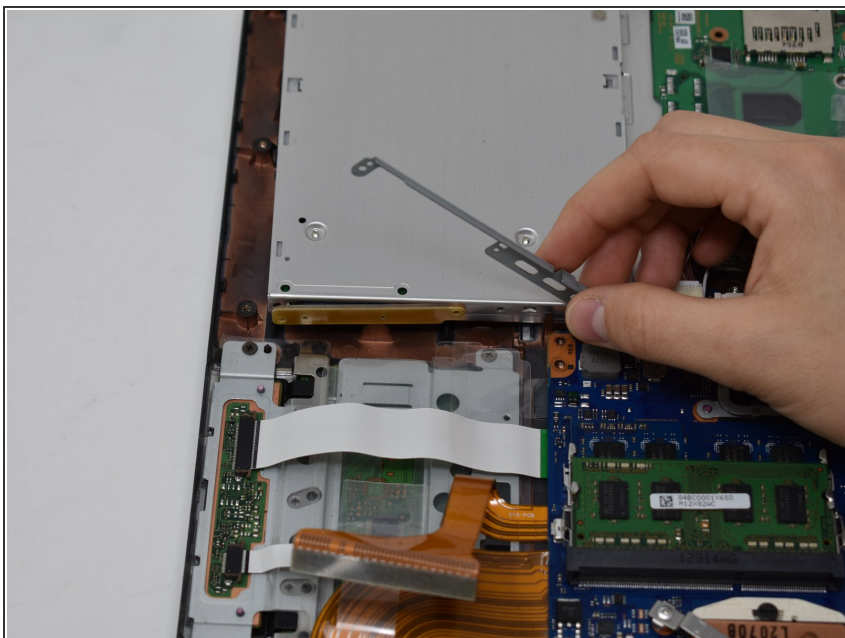
- Insert the plastic opening tool into the edge of the laptop and pry off the back cover.

Step 8 — Optical Drive



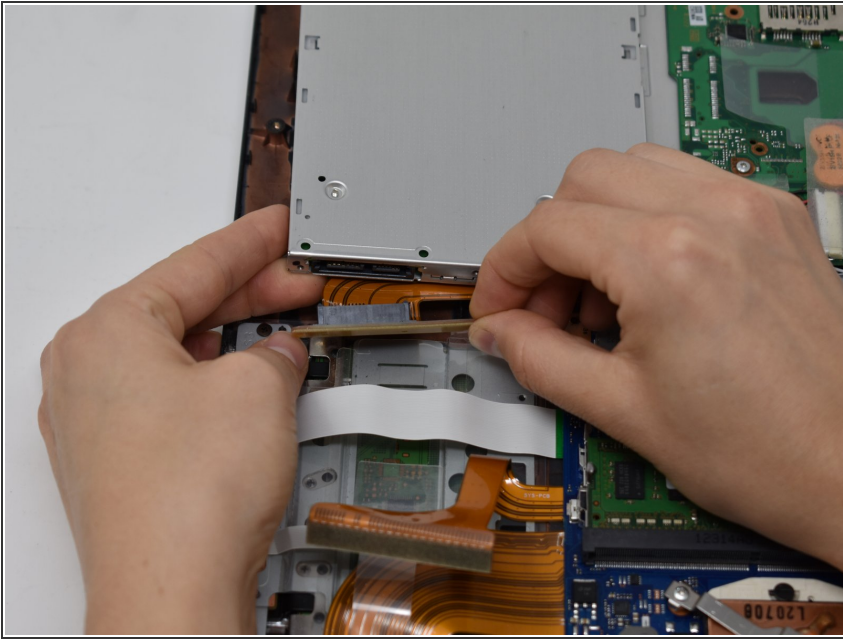
- Remove two 2.5 mm screws from the side of the optical drive using a Phillips #0 screwdriver.

Step 9



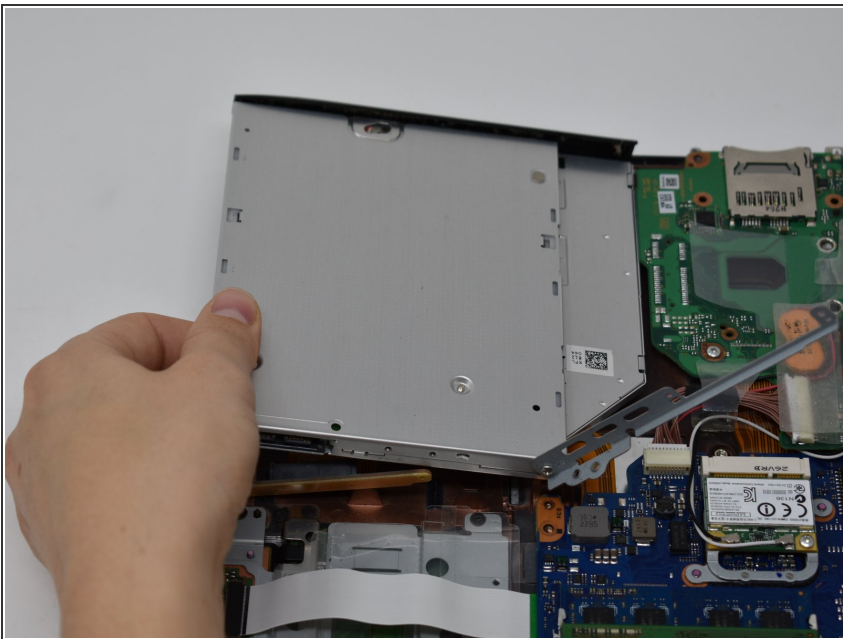
- Lift up the bracket covering the connector.
- ⓘ This bracket should not be fully removed from the optical drive.

Step 10



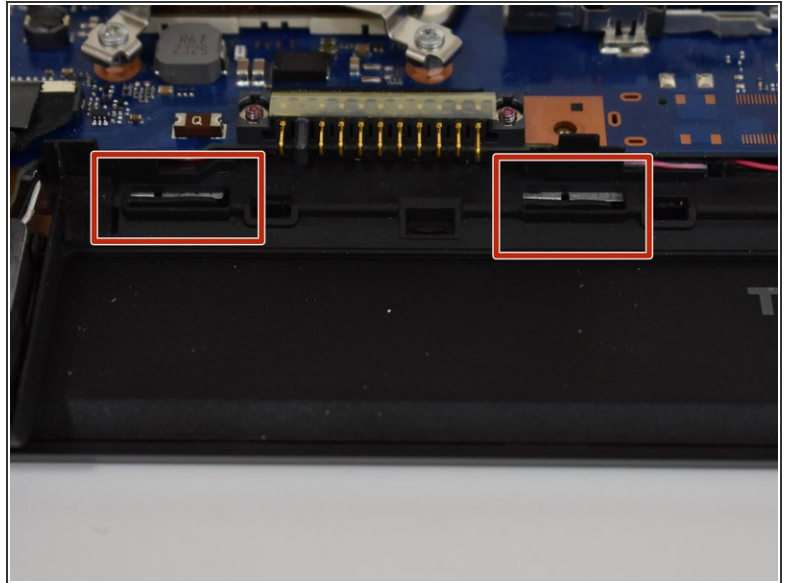
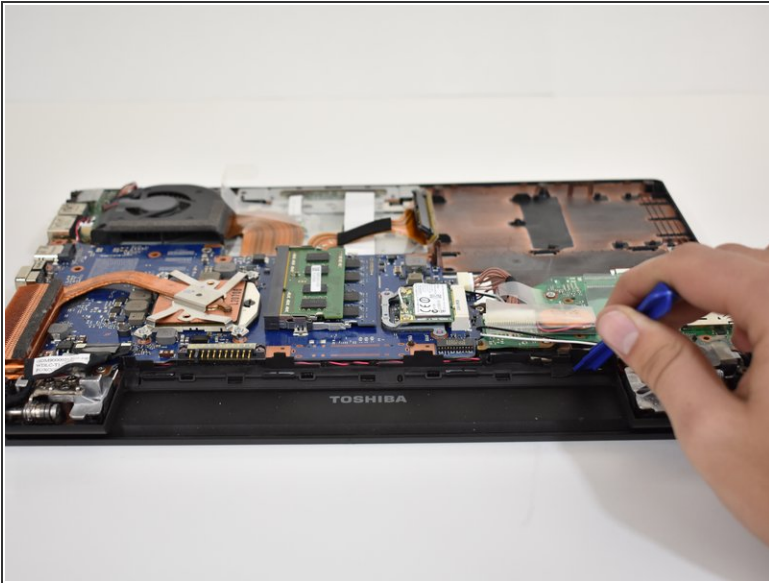
- Gently remove the SATA connector from the port.

Step 11



- Gently lift the optical drive out.

Step 12 — Keyboard



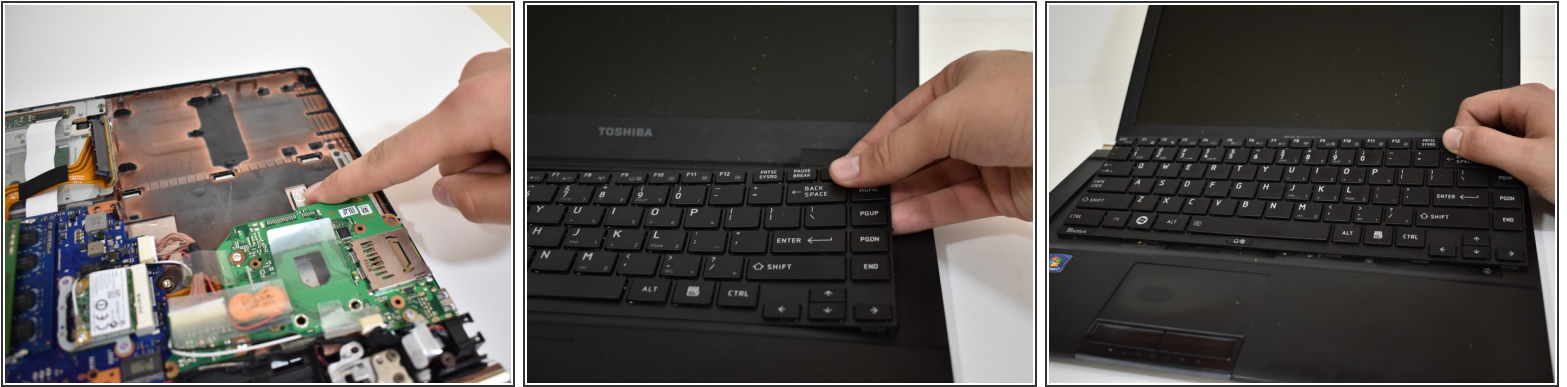
- Move the 4 small tabs, that are placed along the empty battery space, in the direction of where the battery pack would be. They should stay unhooked without having to hold them.

Step 13



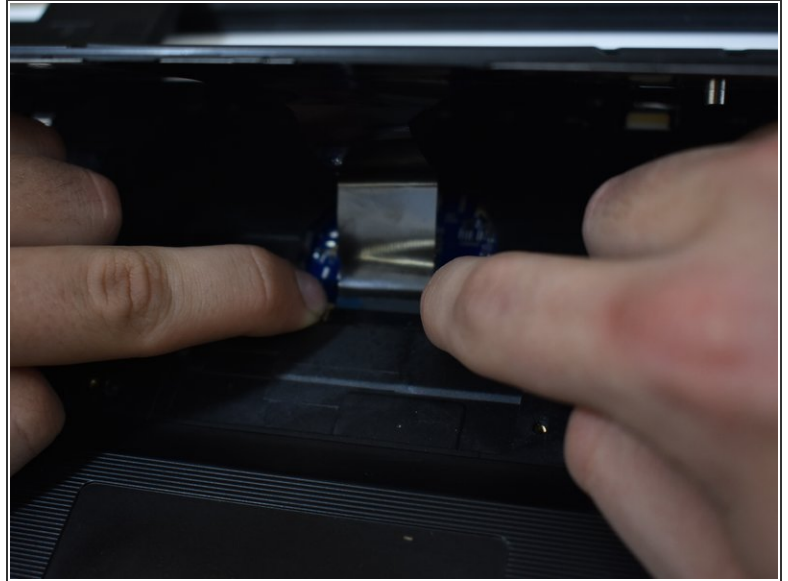
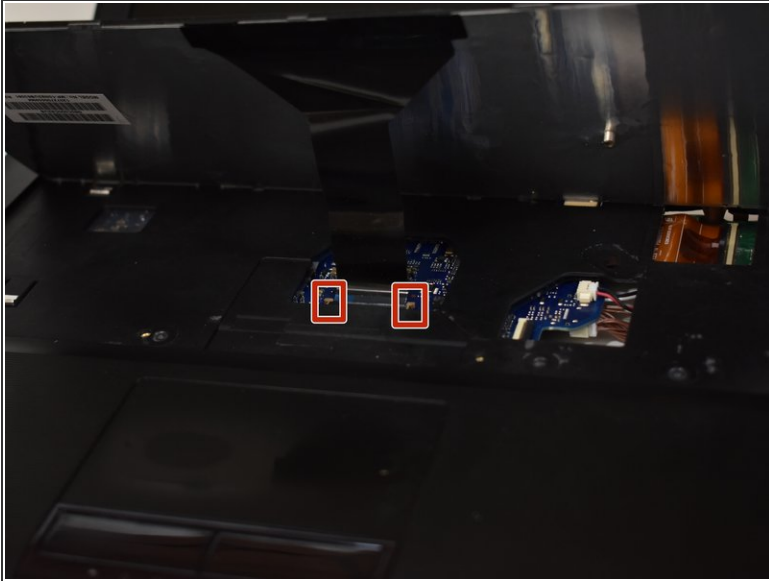
- Flip the computer over and remove the black strip at the top of the keyboard.
- ① If you are having difficulty removing the strip with your hand, try using a spudger to disconnect the strip.

Step 14



- Turn the computer over again and press down on the metal notch. This will push the keyboard out of its place.
- Once you can get a firm grasp on the keyboard make small motions side to side and pull it out of place.
- ⓘ The top and right side of the keyboard should be out when you grab it, so to slide it out pull in the direction away from the lower left corner.
- ⚠ Make sure not to pull to hard as there is one last connection under the keyboard that could be severed.

Step 15



- Push the two tan brackets towards the back of the computer, and safely pull out the connector ribbon.

To reassemble your device, follow these instructions in reverse order.