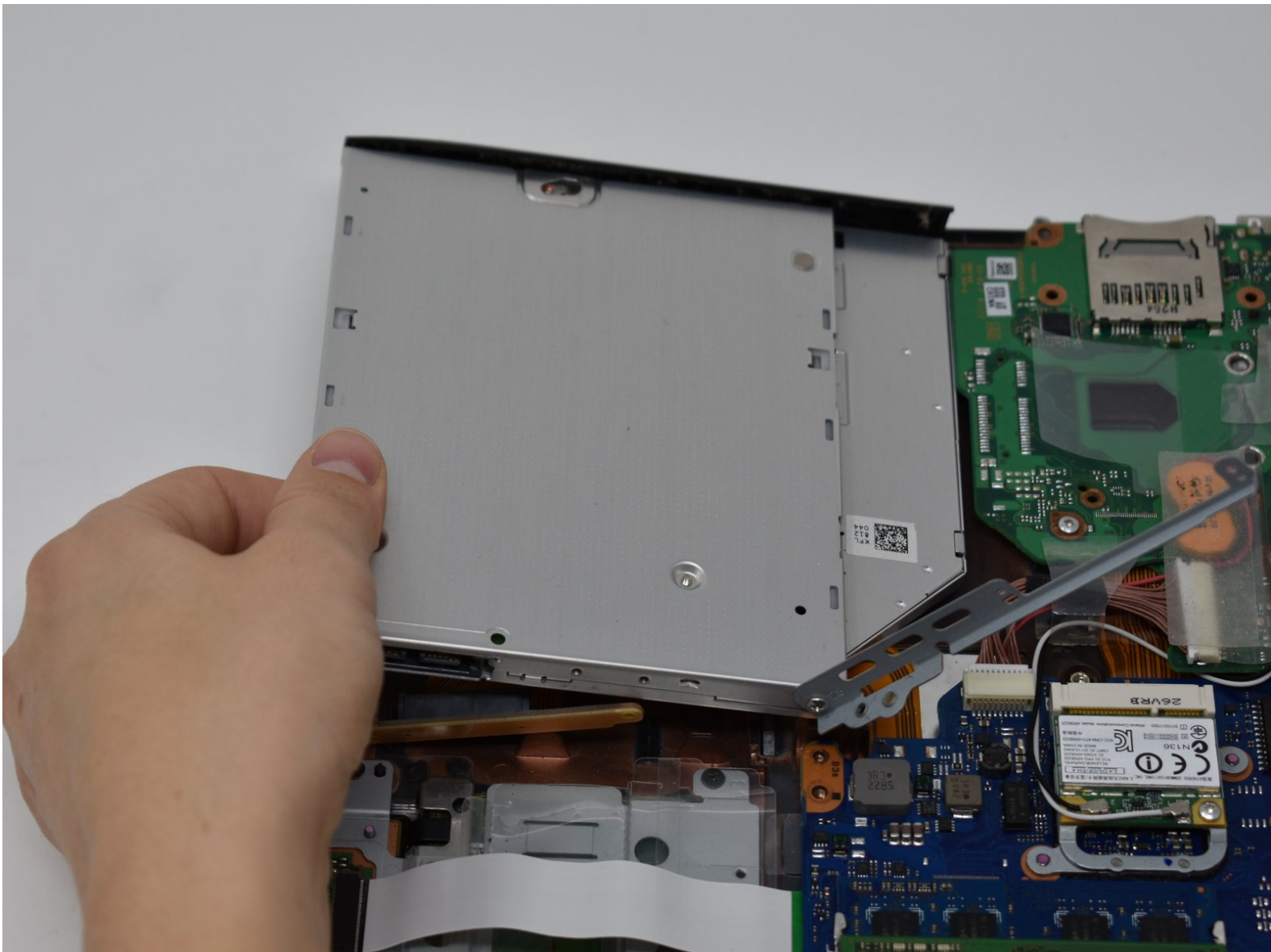




# Toshiba TECRA R940 Optical Drive Replacement

This Guide will outline the steps required to replace The CD Drive in a Toshiba Tecra R940-S9421.

Written By: Holly Strauch



This document was generated on 2019-11-12 06:44:41 PM (MST).

---

## INTRODUCTION

The optical drive is a relatively simple replacement. It must also be removed to access the keyboard.

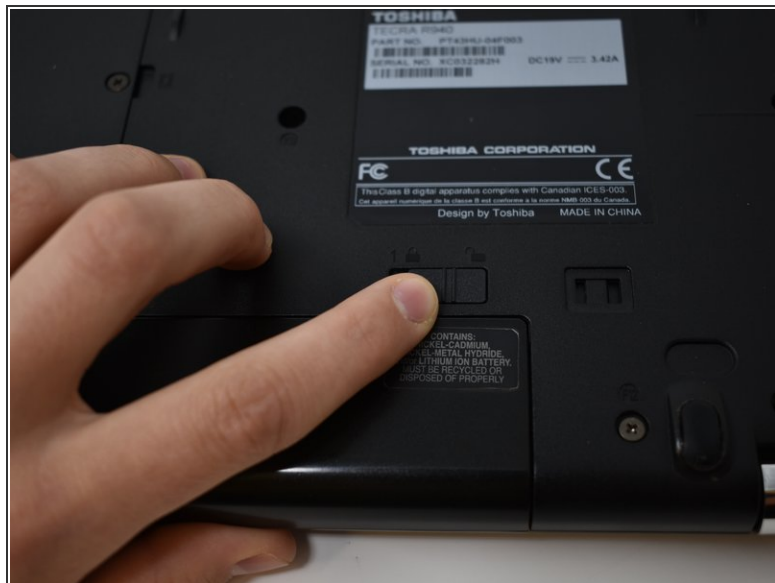
---



### TOOLS:

- [Phillips #0 Screwdriver](#) (1)
  - [iFixit Opening Tools](#) (1)
-

## Step 1 — Battery



- Slide lock 1, located on the right side, to the unlocked position.

## Step 2



- While holding lock 2 (left side) in the unlocked position, pull out the battery pack.

☑ It is not necessary to hold open lock 2 for re-installation.

## Step 3 — Back Panel



- Unscrew the single screw on the RAM access panel using a Phillips #0 screwdriver.
- ⓘ The screw will not come apart from the panel.
- Use a plastic opening tool to pry off the access panel.



## Step 4



- Remove the 11mm screw from the right side of the Hard Drive access panel using a Phillips #0 screwdriver.
- Remove the 3.5 mm screw from the left side of the access panel using a Phillips #0 screwdriver.
- Use a plastic opening tool to pry off the access panel from the bottom.

## Step 5



- Remove twelve 5.5mm screws from the main back cover using a Phillips #0 screwdriver.
- Remove three 11mm screws from main back cover and mini access panel using a Phillips #0 screwdriver.
- Remove two 9.5mm screws from the main back cover using a Phillips #0 screwdriver.

## Step 6



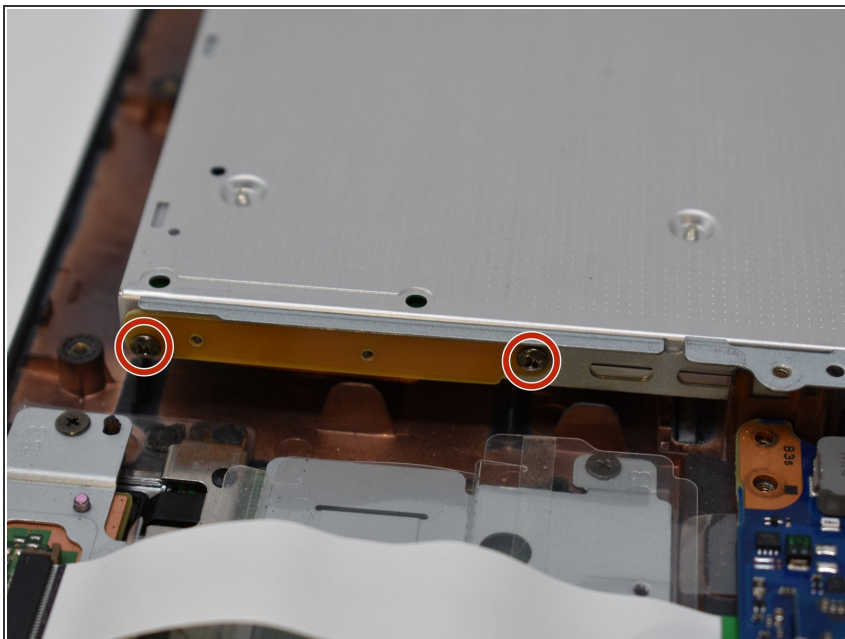
- Lift the hard drive out of the access panel.
- Disconnect the SATA connector from the hard drive by pulling straight out.

## Step 7



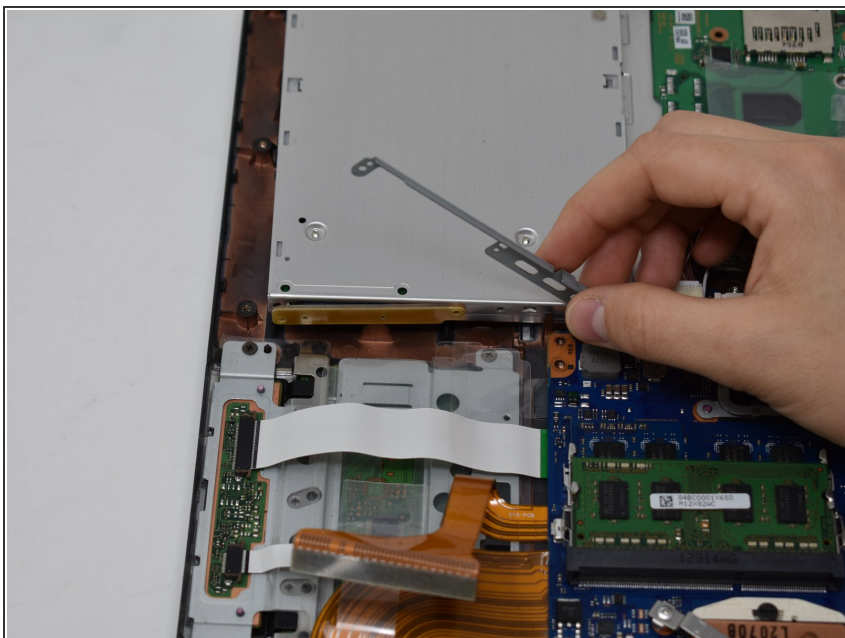
- Insert the plastic opening tool into the edge of the laptop and pry off the back cover.

## Step 8 — Optical Drive



- Remove two 2.5 mm screws from the side of the optical drive using a Phillips #0 screwdriver.

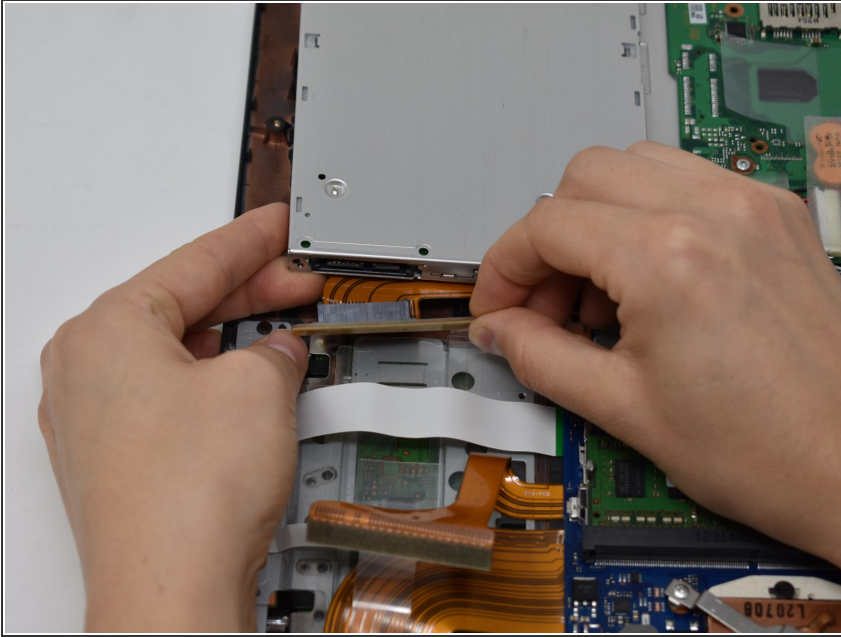
## Step 9



- Lift up the bracket covering the connector.
- ⓘ This bracket should not be fully removed from the optical drive.

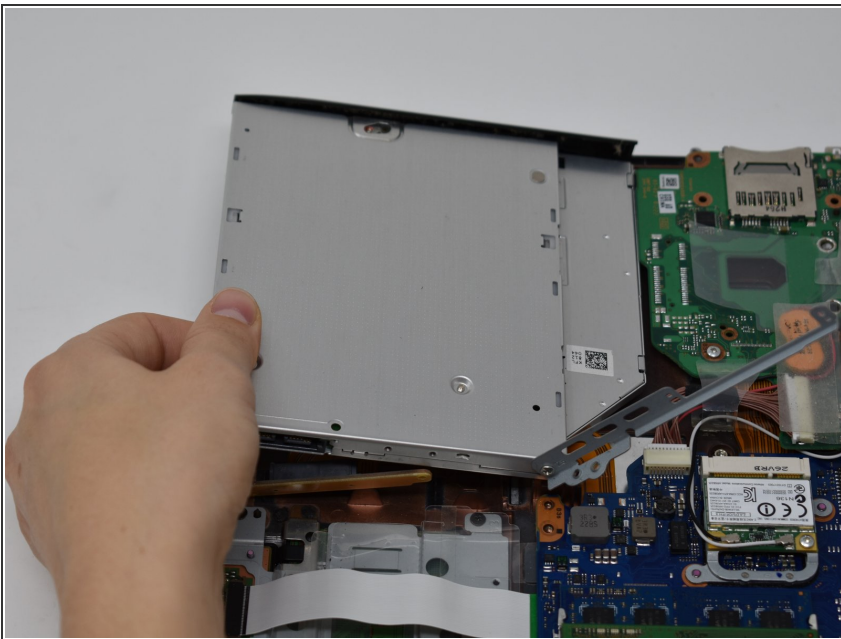


## Step 10



- Gently remove the SATA connector from the port.

## Step 11



- Gently lift the optical drive out.

To reassemble your device, follow these instructions in reverse order.