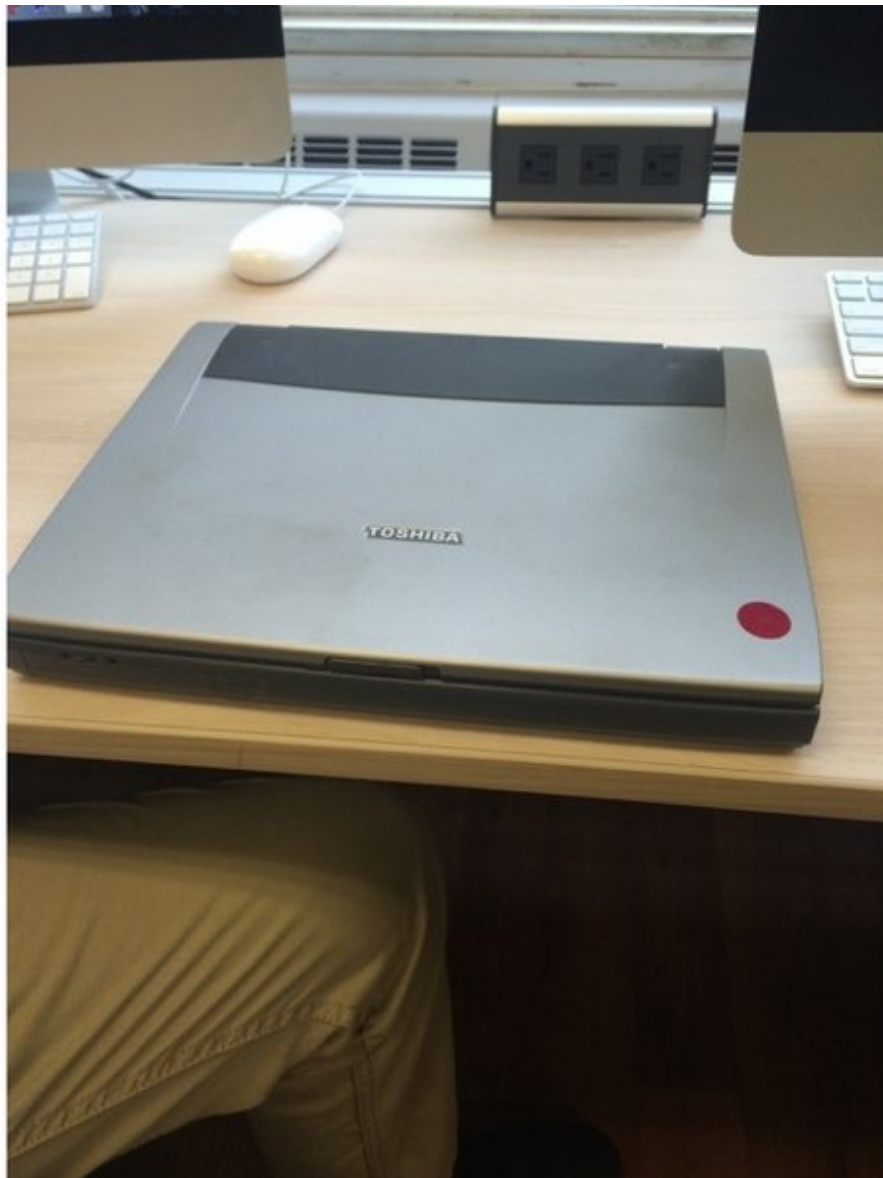




# Toshiba Tecra 8100 Keyboard Replacement

This guide will explain how to replace the keyboard of the Toshiba Tecra 8100 laptop.

Written By: Elaine

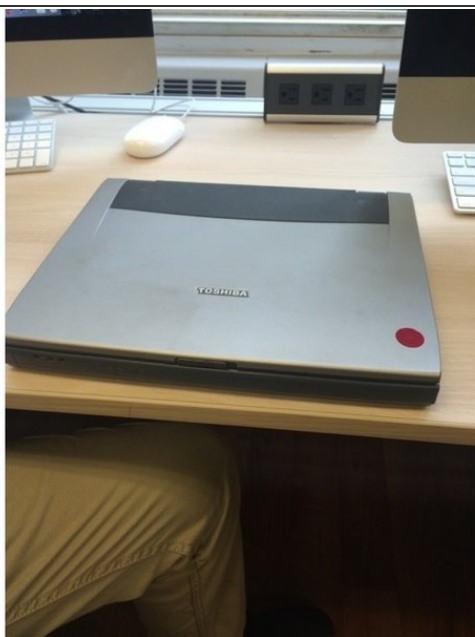




## TOOLS:

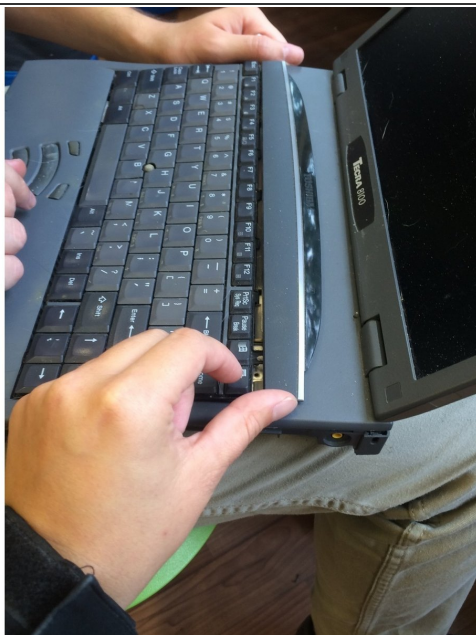
- [Spudger](#) (1)
-

## Step 1 — Keyboard



- Open the laptop.

## Step 2



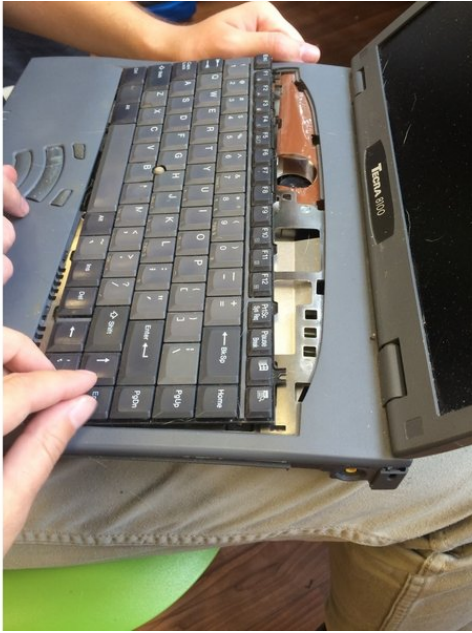
- Locate the long, thin plastic panel above the keyboard. This panel is positioned between the top of the keyboard and the screen of the laptop.

## Step 3



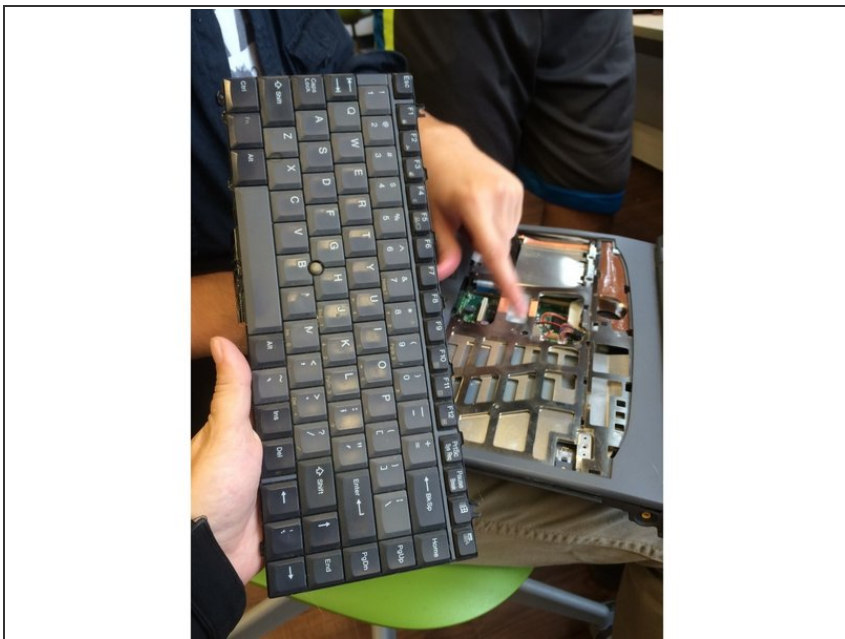
- Use the flathead screwdriver to gently pry the panel away from the laptop.

## Step 4



- Removing the panel will reveal a plug that connects the keyboard to the motherboard. Disconnect this plug.

## Step 5



- Once the keyboard is unplugged, gently pull it off. It should easily remove from the laptop. Replace this with the new keyboard. Plug the new keyboard in and replace the plastic panel.

To reassemble your device, follow these instructions in reverse order.