



Toshiba Tecra 8200 RAM Replacement

Follow this guide to replace the RAM of the Toshiba Tecra 8200.

Written By: Sally



INTRODUCTION

This guide demonstrates how to properly remove and replace a Toshiba Tecra 8200 RAM in order to preserve the function of the device.




TOOLS:

- [iFixit Opening Tools](#) (1)
 - [Phillips #00 Screwdriver](#) (1)
-

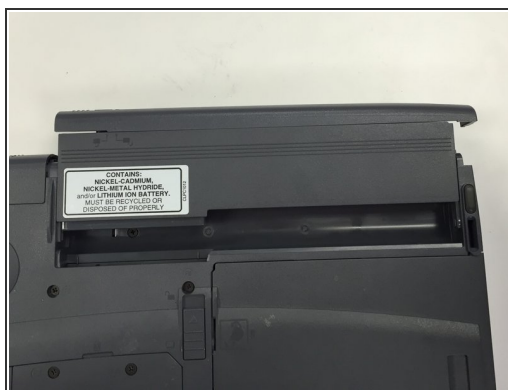
Step 1 — Battery



 Turn off the device and unplug the power cord.

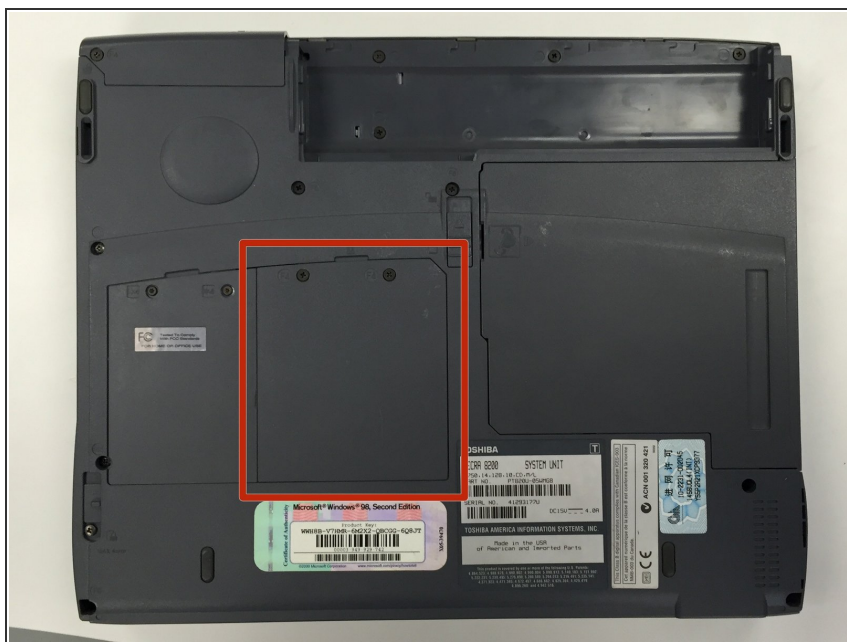
- To remove the battery, flip the device, so that the bottom is facing upward.

Step 2



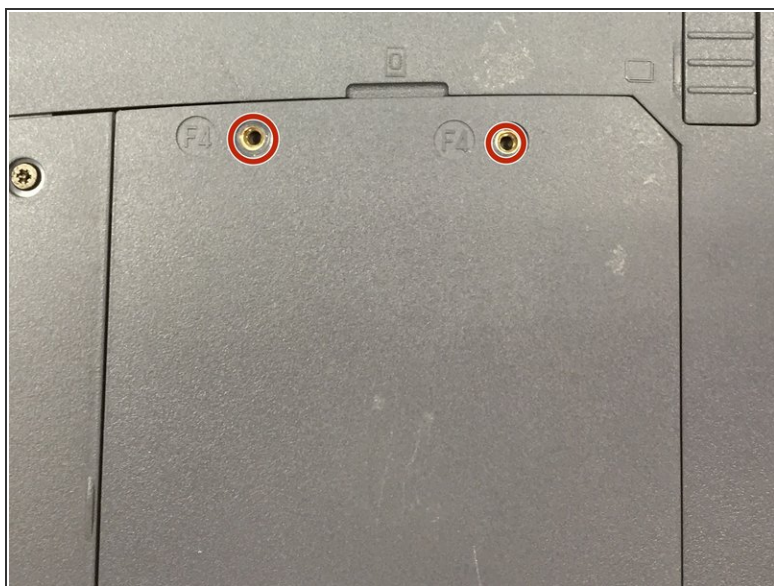
- Slide the battery to the right side until you hear a click.
- Carefully remove the battery from its compartment.

Step 3 — RAM



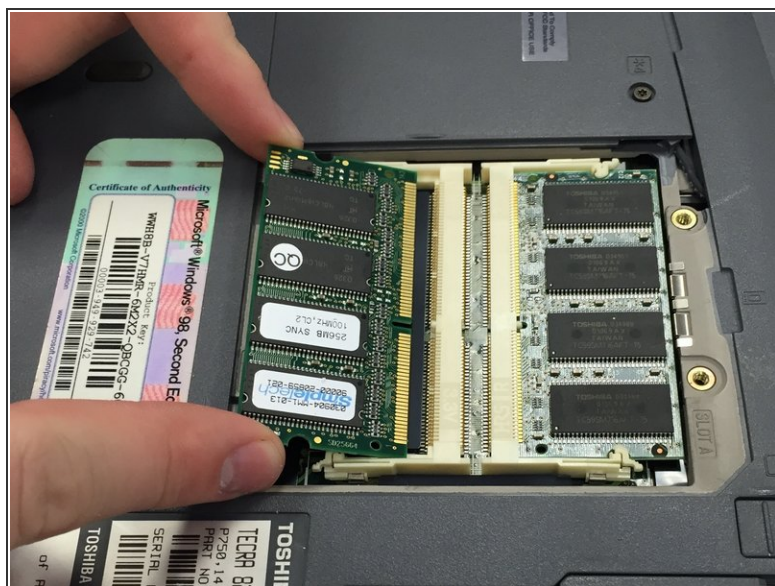
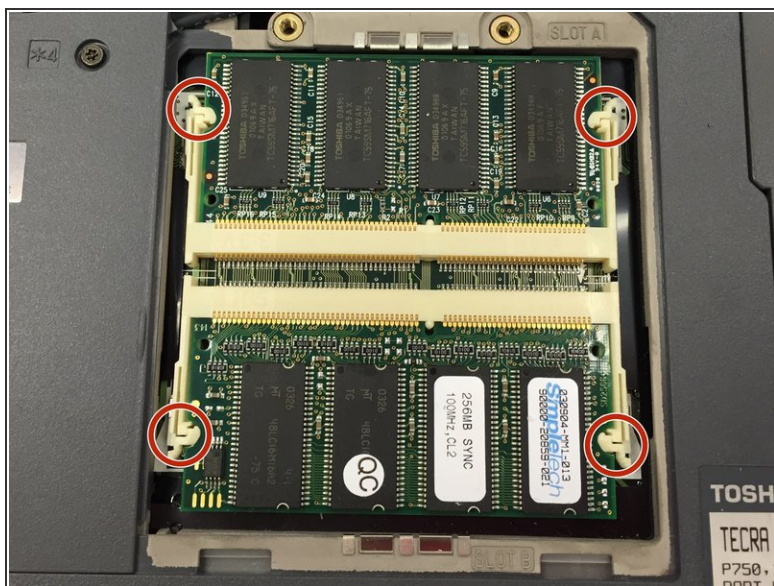
- Position device so the screen is face down.
- Locate RAM Panel.

Step 4



- Remove two Phillips #00 screws labeled F4.
- Remove panel.

Step 5



- Pinch clips on each side of RAM chips to release.
- Gently remove RAM chips at a 45 degree angle. Use a plastic opening tool if RAM chips do not pop open.

To reassemble your device, follow these instructions in reverse order.