



# Toshiba Thrive 4G Battery Replacement

If your computer will not turn on, or your batter does not hold a charge, your battery may need to be replaced.

Written By: Courtney Campbell





## TOOLS:

- [Spudger](#) (1)
-

## Step 1 — Removing Outer Shell



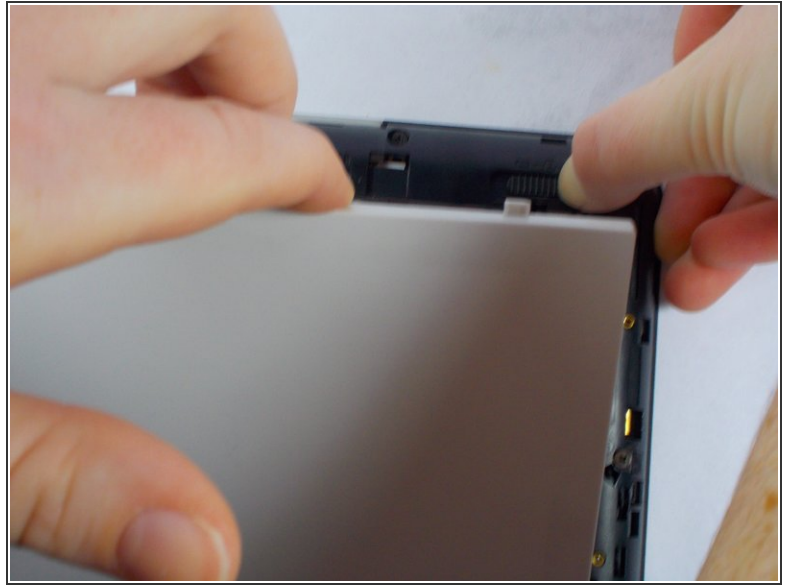
- To remove the outer casing, wedge the pry tool in between the front and back panel, and pull them apart.

## Step 2 — Unlock the Battery



- Locate the lock switch, at the top left corner of the device, and adjust to the unlocked position. (from left to right)

### Step 3 — Take Battery Out



- Use your fingers to push the release switch, which is located at the top right corner of the device to the right.
- While pushing the release switch to the right, use your other hand to pull the battery away from the inner casing.



## Step 4 — Replace Battery



- To replace the battery, take your replacement piece and flip it upside down, revealing the warnings and specifications of that specific battery.
- Locate the crevice at the bottom of the battery, which has black openings in it.
- Line up the black openings with the golden prongs located on the inner casing, and slide the battery into place.
- Move the lock/unlock switch to the locked position

To reassemble your device, follow these instructions in reverse order.