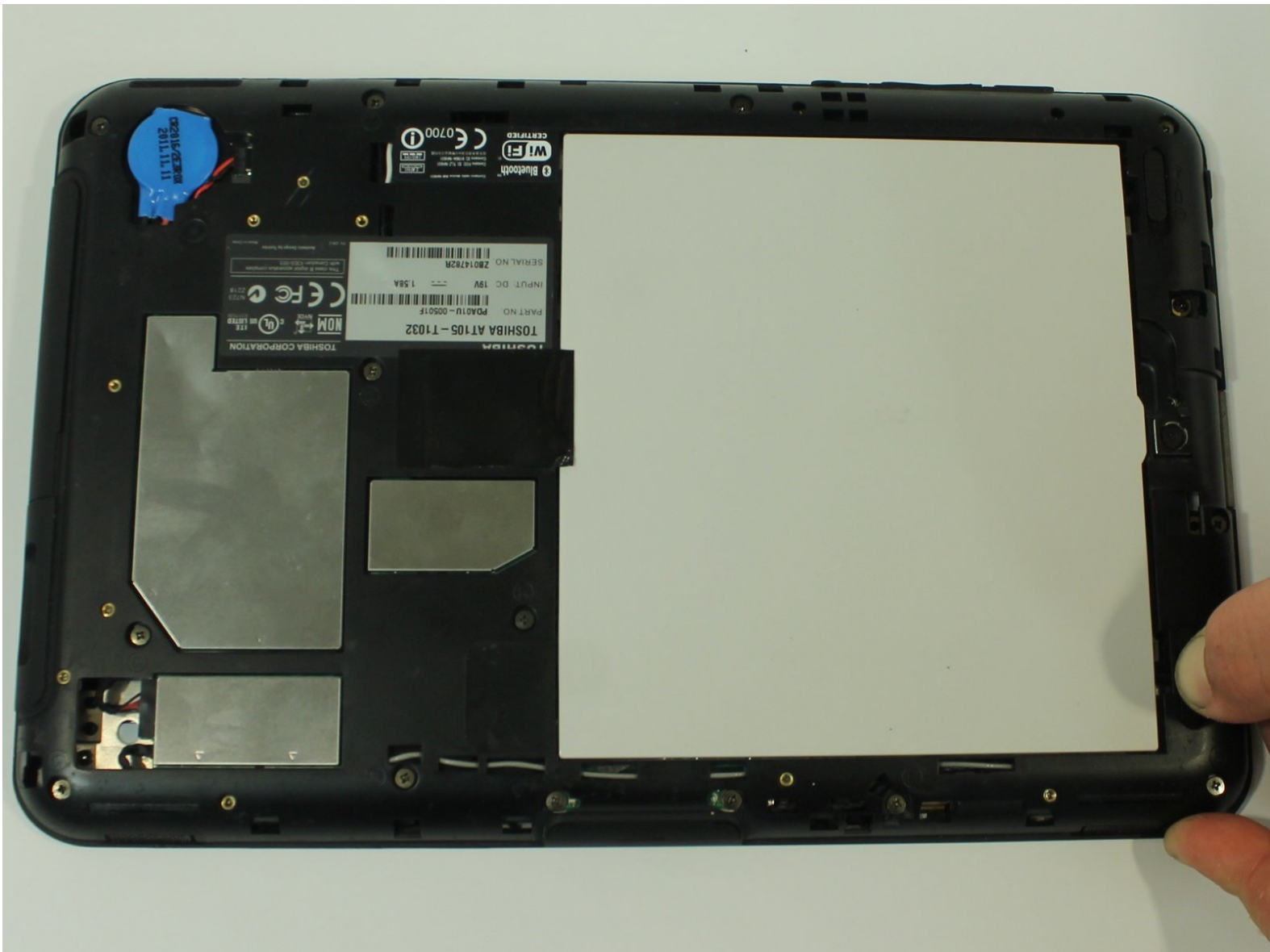




# Toshiba Thrive Battery Replacement

If the battery is damaged or swollen, it can easily be removed for replacement.

Written By: Kason



# INTRODUCTION

This guide will show you how to replace your Thrive's battery.

## Step 1 — Back Cover



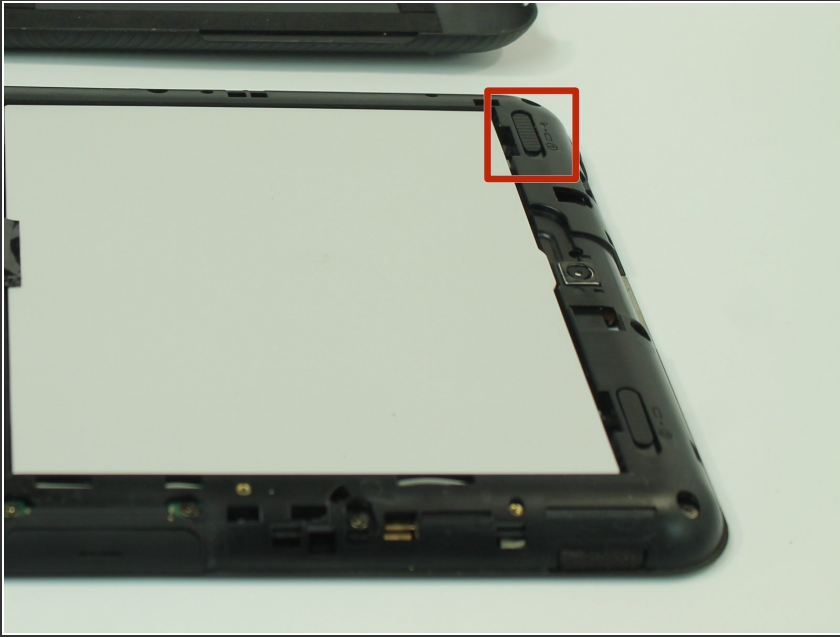
- Make sure the lock switch for the back cover is unlocked.
- The cover is unlocked when the switch is slid in the direction of the 'unlock' icon.

## Step 2



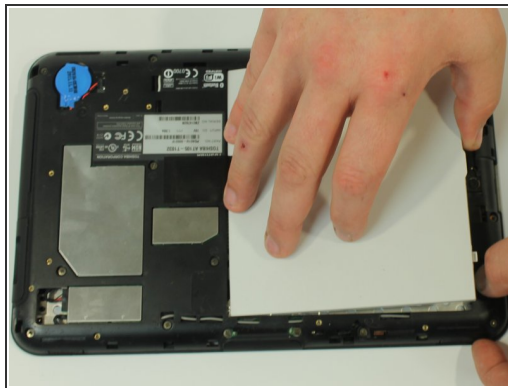
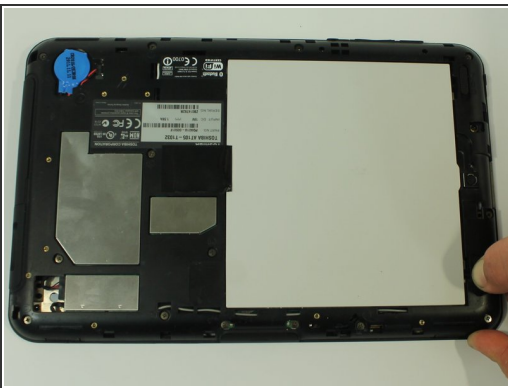
- Remove back cover by prying away from the Thrive.
- The easiest place to pry from is one of the two speakers.

## Step 3



- To remove the battery, make sure the lock switch is in the unlocked position.
- The battery is unlocked when the switch is slid to the unlocked position.

## Step 4



- Slide the battery switch release to the right.
- While holding the switch in place, lift up the battery.

To reassemble your device, follow these instructions in reverse order.