



Toyota Yaris (Echo) 1999-2005 headlight optical unit replacement

Lustreless headlights, not waterproof any more? Replace the entire optical unit by a brand new one. (Thanks, Bruno!)

Written By: pierre yves Marie



INTRODUCTION

Your headlights are worn, opaque ?

Water starts to seep in and you get droplets on the inside ?

I'll show you how to replace those old headlights with new ones. Your Yaris will look like it's new !



TOOLS:

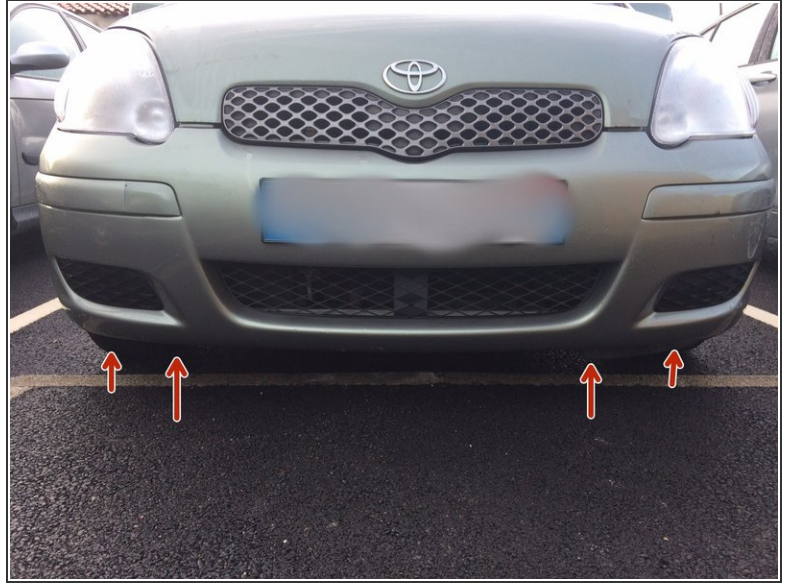
- [New Item](#) (1)



PARTS:

- [New Item](#) (1)
Projecteur principal droit
- [New Item](#) (1)
Projecteur principal gauche

Step 1 — Unscrew the front bumper



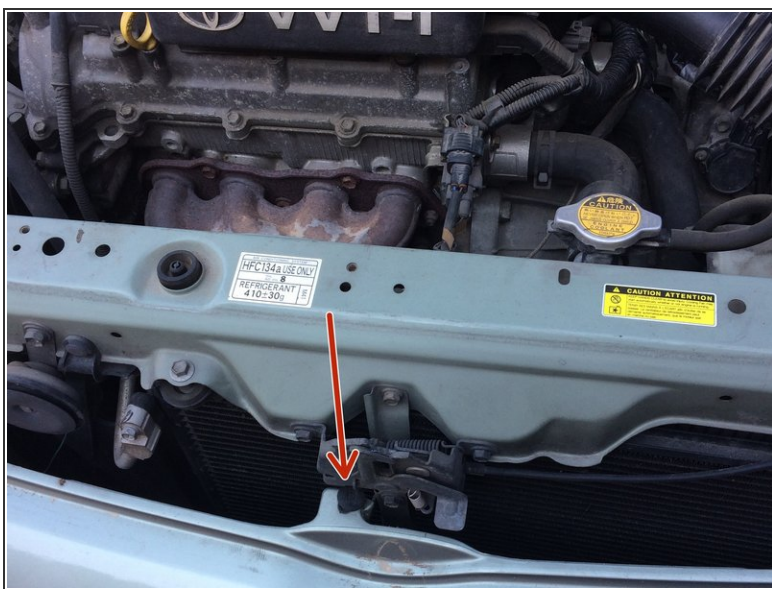
- Unscrew the cross-head screws which attach the front bumper to the car.
 - ⓘ There are several (4) screws to undo.
- ⓘ If you're only changing one headlight you need only unscrew one side. But for your peace of mind I'd advise you to remove them all.

Step 2 — Wheel arch screw



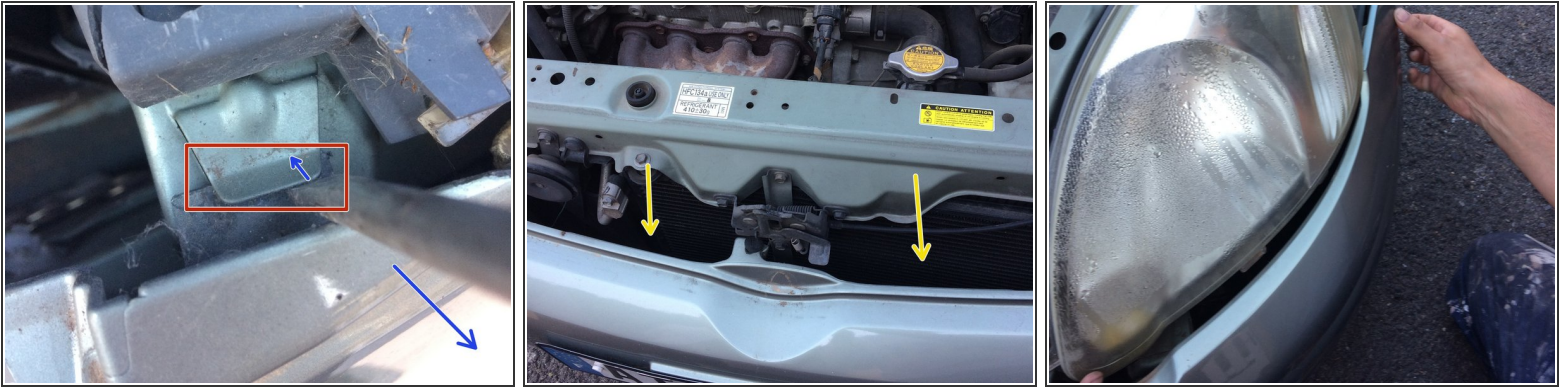
- Unscrew the cross-head screw in the wheel arch.
- ① You can use either a spanner or a cross-head screwdriver.

Step 3 — Bumper central attachment



- Release the plastic clip which attaches the top of the bumper to the middle of the radiator grill.

Step 4 — Bumper withdrawal



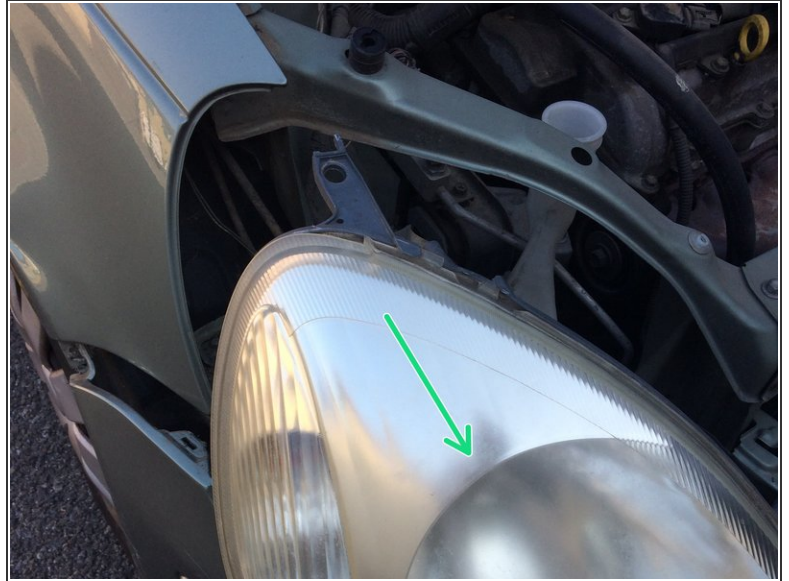
- Disengage the the bumper attachment.
 - Using a large screwdriver or a small iron bar, lever it as shown until it detaches.
 - There are 2 attachments to release either side of the bonnet lock.
- ⓘ If you're only changing one headlight you only need to detach one side.
- Completely disengage the bumper from around the headlight, pulling it gently outwards.

Step 5



- Remove the cross-head screw on the side of the headlight (at the front).
- Remove the cross-head screw from the top of the headlight.

Step 6



- Lift the top attachment of the headlight.
 - Disengage the headlamp, pulling it forwards.
- ⚠ Be careful - the bulbs are still connected. Don't pull the headlight too far forward.

Step 7 — Indicator bulb



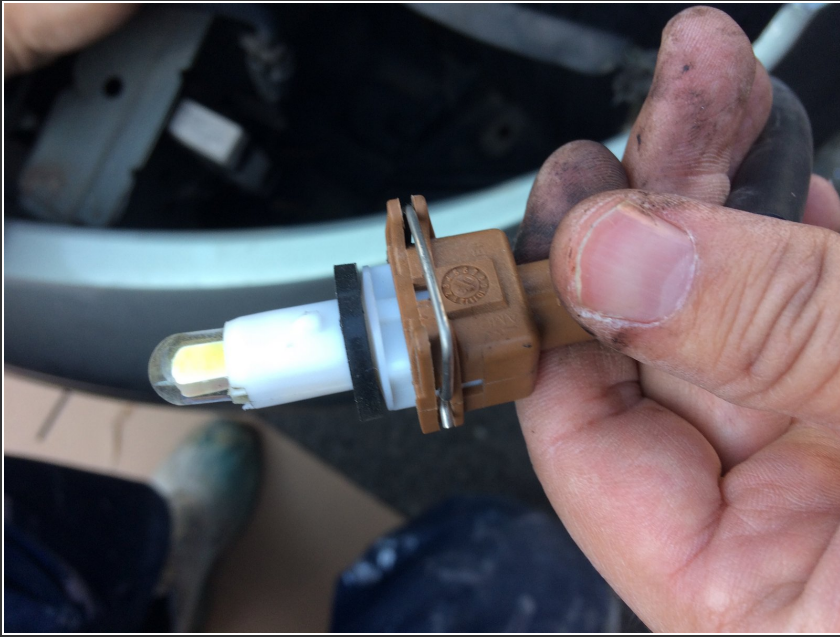
- Twist the indicator connector a quarter turn anticlockwise.
- Withdraw the indicator bulb.

Step 8 — Main beam bulb



- Withdraw the rubber boot on the back of the main beam bulb.
- Unclip the clip which retains the main beam bulb.

Step 9 — Side light



- Twist the side light connector a quarter turn anticlockwise.
- Withdraw the side light.

Step 10 — Dip motor



- Twist headlight dip motor a quarter turn anticlockwise.
 - Withdraw the dip motor.
- ⚠ On reassembly, take care to secure the motor properly in position. An adjustment may prove necessary to ensure the position of the dashboard control corresponds to the correct level of dip.

Step 11 — Spanking new!



- To reassemble your headlight, take care to correctly position it before replacing the bulbs, the dip motor and the screws.
- Make sure the plastic pin on the side of the headlamp is properly inserted into the bodywork.

To reassemble your device, follow the steps in reverse order.