



Trek 820 Spokes Replacement

This guide will show you how to remove the spokes from the rim of your tire.

Written By: Kaveh Karimiyanha





TOOLS:

- [Flathead Screwdriver](#) (1)
-

Step 1 — Front Wheel



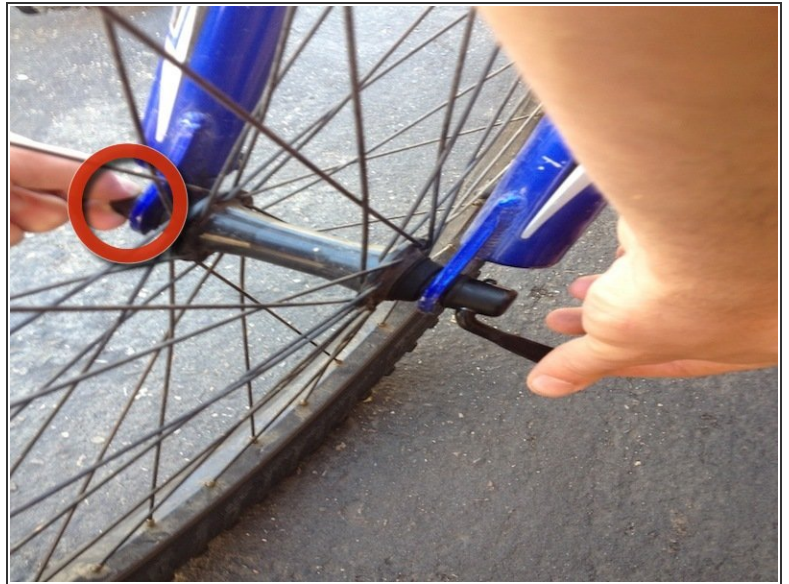
- Facing your bike, straddle your front wheel between your knees.
- Locate the front brake at the top of the fork. It will more than likely look like the picture on your left.
- Since the tire is normally wider than the space between the brake pads, you must first release the tension in the brake wire. To do this, run your right hand under both brake calipers and push them inwards towards one another.

Step 2



- With the brake wire sufficiently loosened, unhook the metal tube that contains the brake wire (called the noodle) from the brake wire holder using your left hand.
- The brake will now be open wide enough to permit removal of the wheel.

Step 3



- Find the quick release lever on the outside of the bike's fork on the right hand side. Turn the level counter clockwise loosening the lever until it comes off.

Step 4



- After the quick release lever is removed, the wheel can be separated from the front fork.

Step 5



- In reassembling the wheel to the bike, perform the steps in reverse order.
- With the axle all the way into the fork slots, tighten the quick release lever into the fork end securely. It should take a modest amount of force applied to tighten the axle to the fork.
- Squeeze the brake calipers together and return the cable noodle back into the holder.
- Make sure you go back, and check to make sure its snug so that the wheel has no way of coming back off.

Step 6 — Disassembling Trek 820 Tire Removal from Wheel



- Locate the tire pressure valve.

Step 7



- First, you must release the air.
- To release the air from the tire, press the center spoke in the middle of the air pressure valve.
- Release air until no more air is being released.

Step 8



- Use a sturdy, long object, such as a screwdriver or the back of a spoon, to wedge in between the tire and the wheel

Step 9



- Now you may separate the tire from the wheel.

⚠ Be careful pulling the tire from the wheel around the air pressure valve.

Step 10



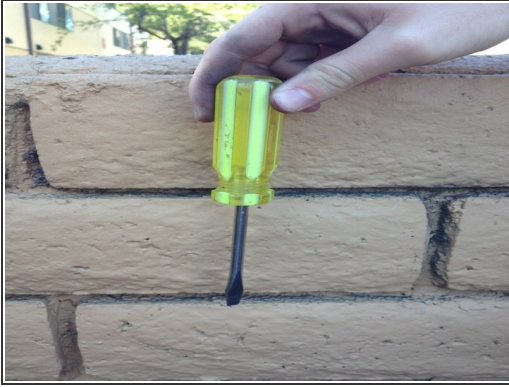
- To remove the tube, all you need to do is pull the tube from the inner lining of the tire.


Step 11 — Spokes




- ⓘ Make sure you have removed the tires as shown in the prerequisite guides.
- Slowly peel back the layer of rubber that covers the 32 screws on the tire .


Step 12



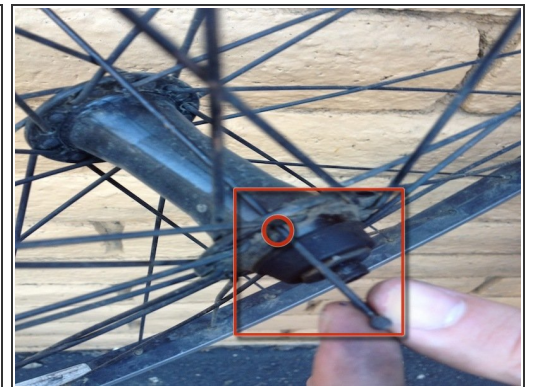
 You will need a flathead screwdriver

 You will need to alternate between steps #2 and #3 because the spokes have to be removed one at a time.

- Remove the screw using the flathead.
- All screws will be the same size.

 Only remove the screws of the spokes you are replacing.

Step 13



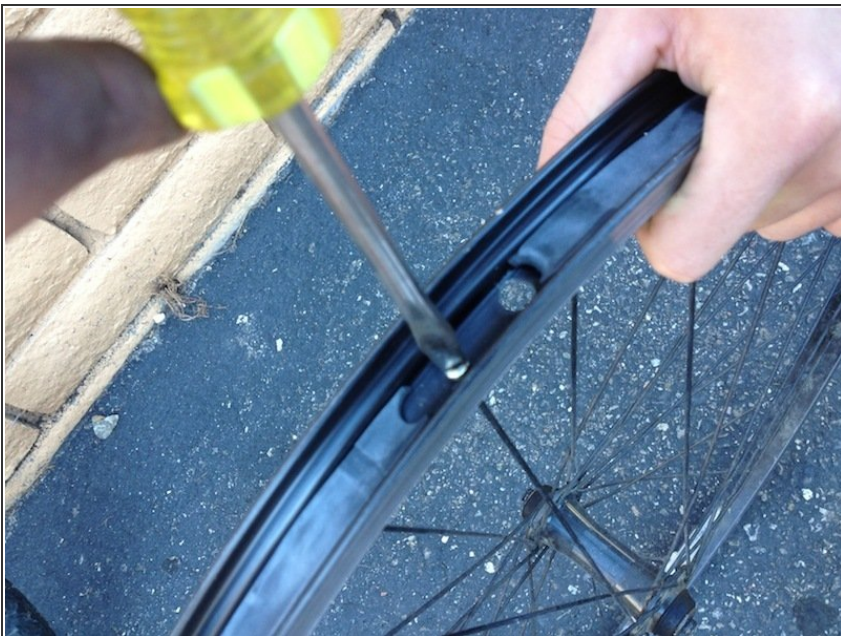
- Once a screw is removed gently remove the spoke from the rim of the tire if it did not fall out.
- Maneuver the spoke so that it is perpendicular then slide the spoke out.

Step 14



- Insert the new spoke into the missing hole.
- ⚠ If you are replacing multiple spoke , you will need to alternate between steps #4, and #5 . The spokes must be replaced one at a time.

Step 15



- Use the flat head screw driver to insert a screw to stop the spoke from falling out.

To reassemble your wheel after following steps #4, and #5 simply reattach the rubber tire.