



# Trio AXS 3G Motherboard Replacement

This guide will show you how to replace your tablet's motherboard.

Written By: Michaela Causey



---

## INTRODUCTION

if your tablet suffered water damage and/or no longer functions properly, replacing the motherboard might be necessary.

---

### TOOLS:

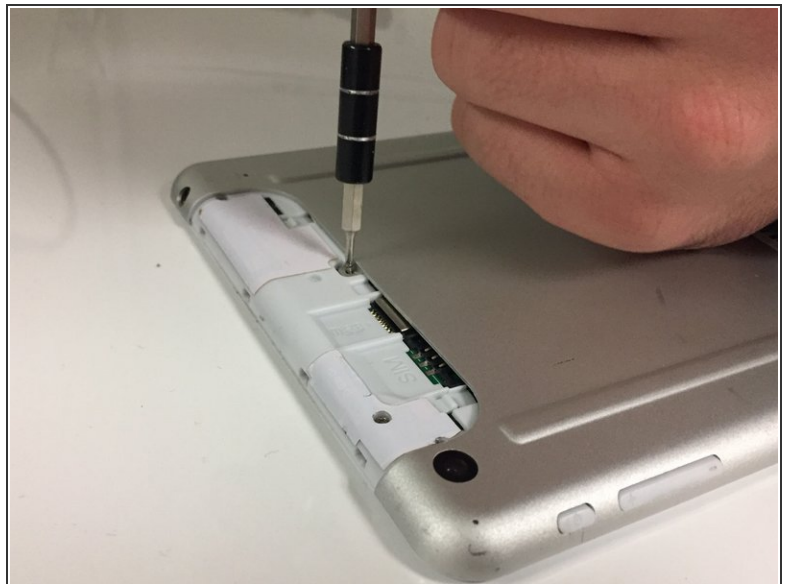
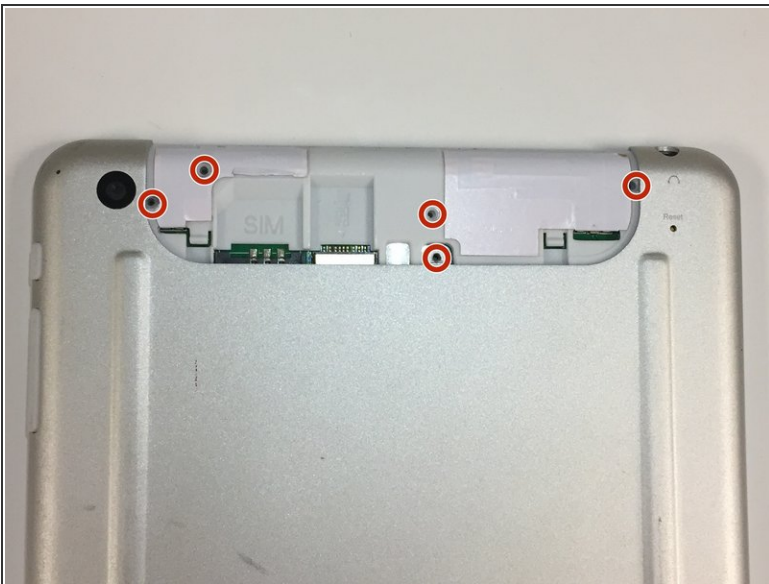
- [Phillips #000 Screwdriver](#) (1)
  - [iFixit Opening Tools](#) (1)
-

## Step 1 — Back Case



- ❗ On the back of the device there is a white SD card case that shelters the screws that attach the back panel to the tablet.
- Use your thumbs to slide up and off the small SD card case.

## Step 2



- Using the Phillips Head #000, unscrew the 5 4mm and 3mm screws at the top.

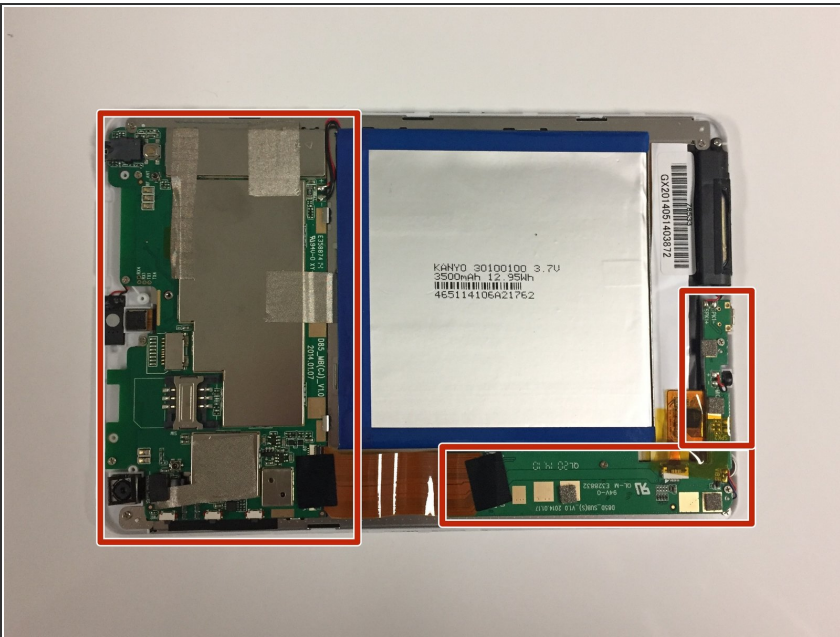


## Step 3



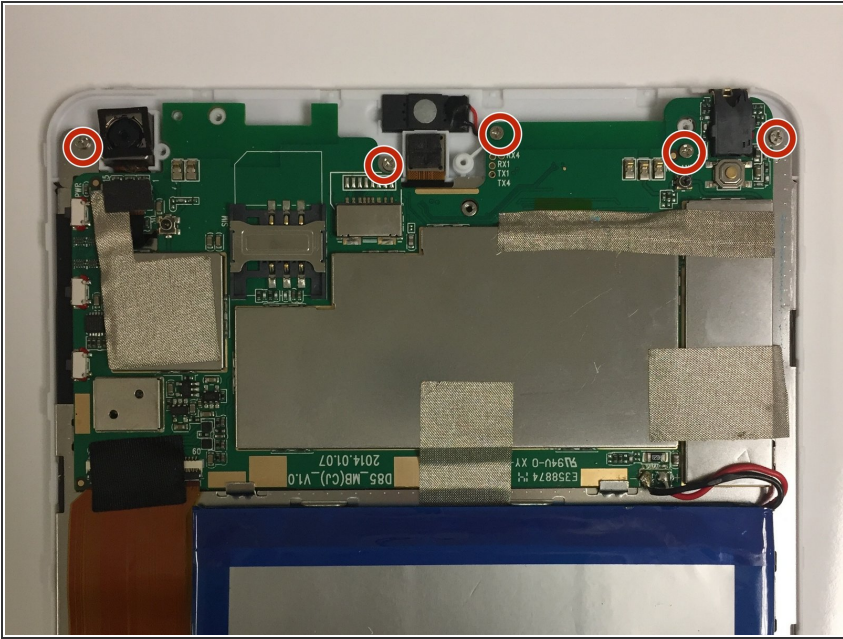
- Insert a plastic opening tool between the back panel and the front of the tablet, and gently pry it away from the tablet.
- ⚠ Do not pry too hard as the screen is fragile and might crack.
- ⓘ It is best to start at the bottom of the tablet when prying the back panel off.
- ⓘ The volume piece will also dislodge when the back panel is removed.

## Step 4 — Motherboard



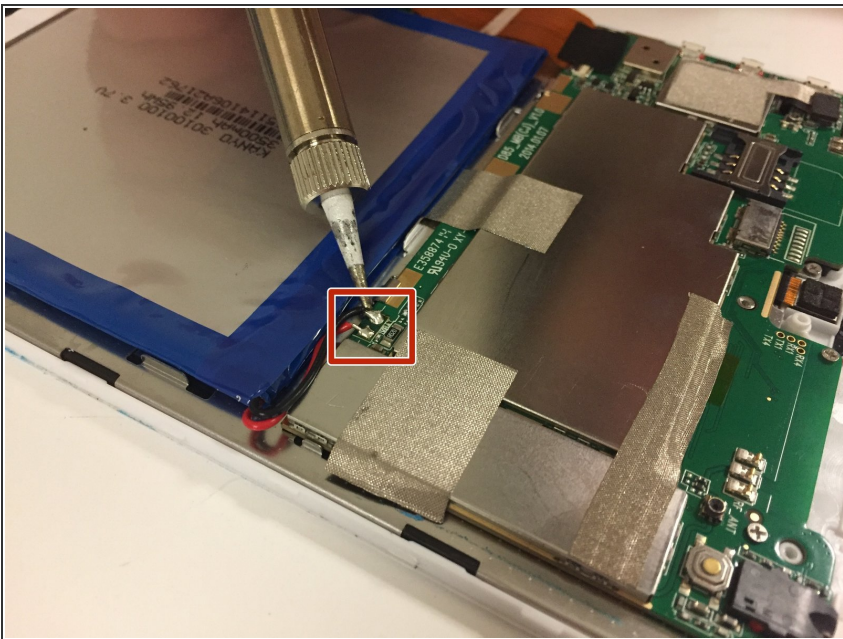
- ⓘ The motherboard is a series of green panels. The larger portion is located above the battery and supports the camera. The smaller portion is located towards the bottom and supports the speakers. There are several connections that will need to be detached using a soldering tool.

## Step 5



- Using a #000 screwdriver, unscrew the 5 screws connecting the motherboard to the device.

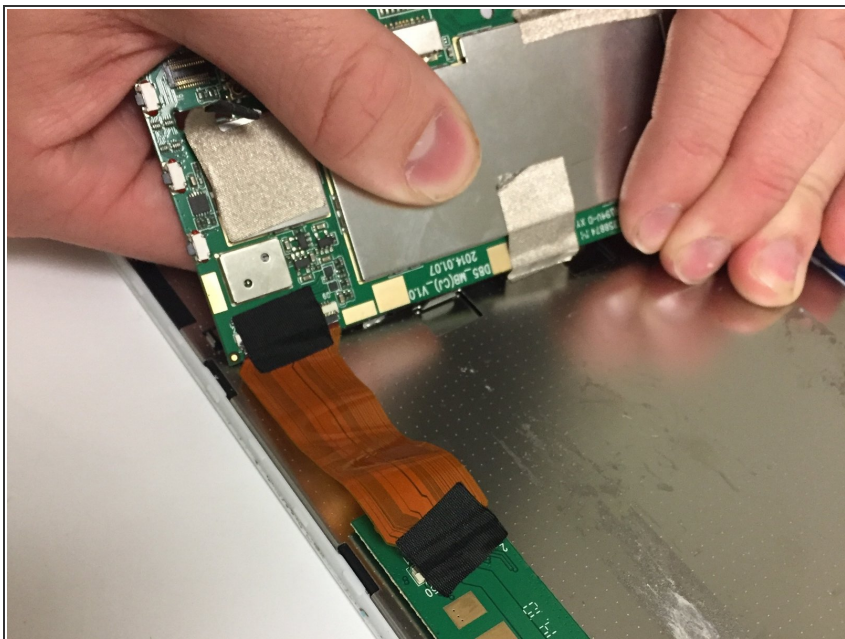
## Step 6



- ⓘ The battery will need to be disconnected from the motherboard.
- Using a soldering tool, melt the two metal parts connecting the battery wires to the motherboard.
- ⓘ You have the option of removing the battery completely at this point. It will make the next step easier, but it is not required.

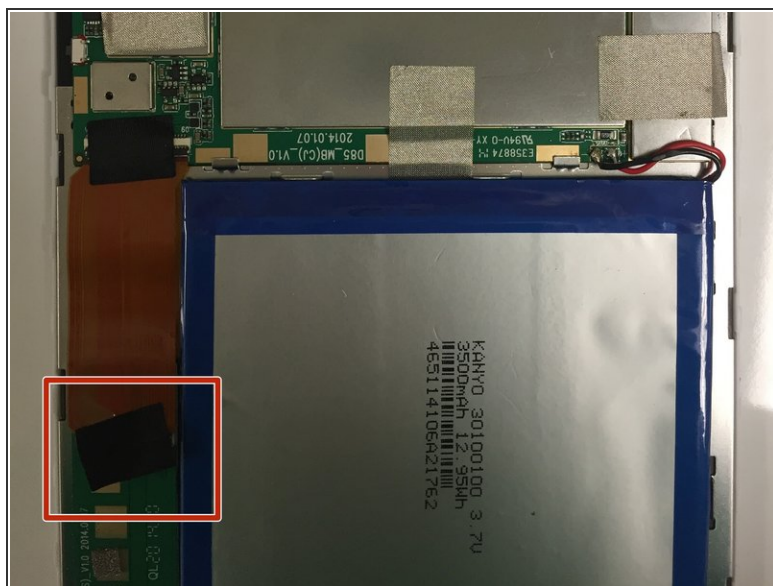
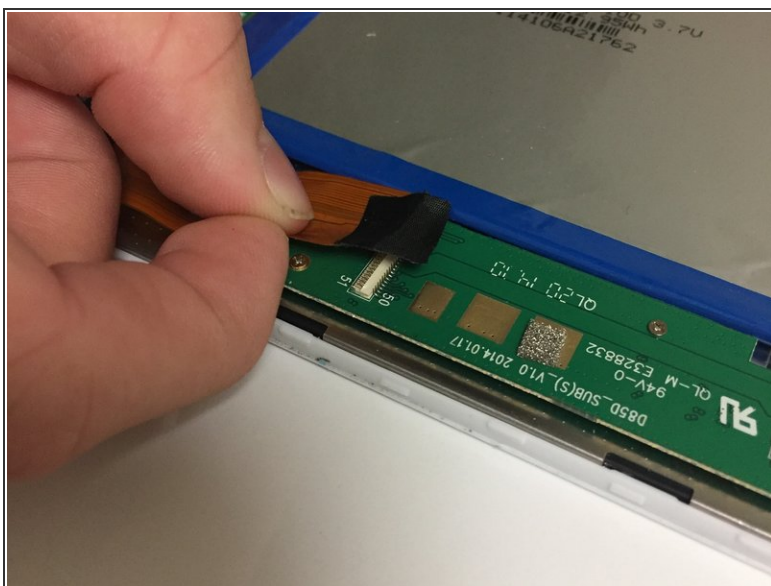


## Step 7



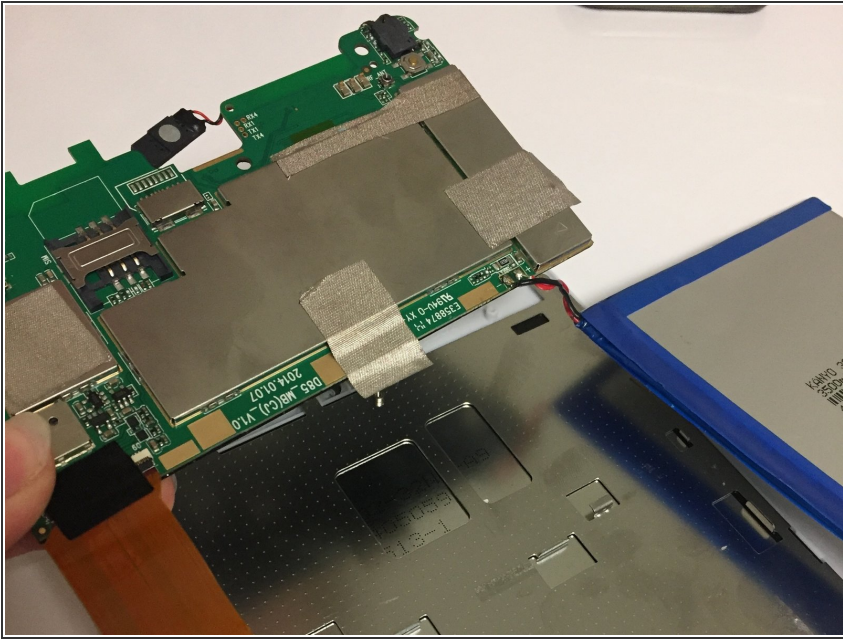
- Disconnect the silver tape that attaches the motherboard to the metal panel.

## Step 8



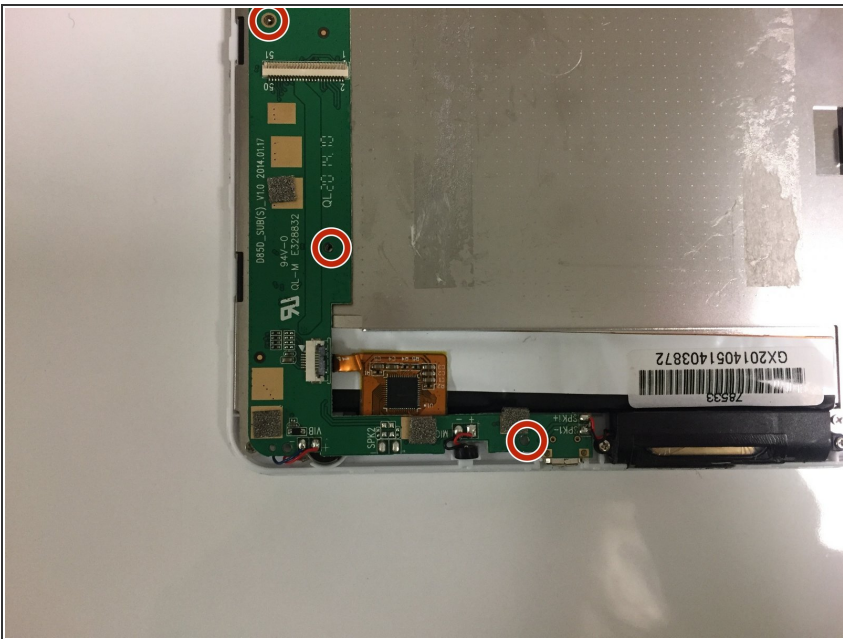
- Disconnect the ribbon from the bottom portion of the motherboard.

## Step 9



- Remove the motherboard and set aside.

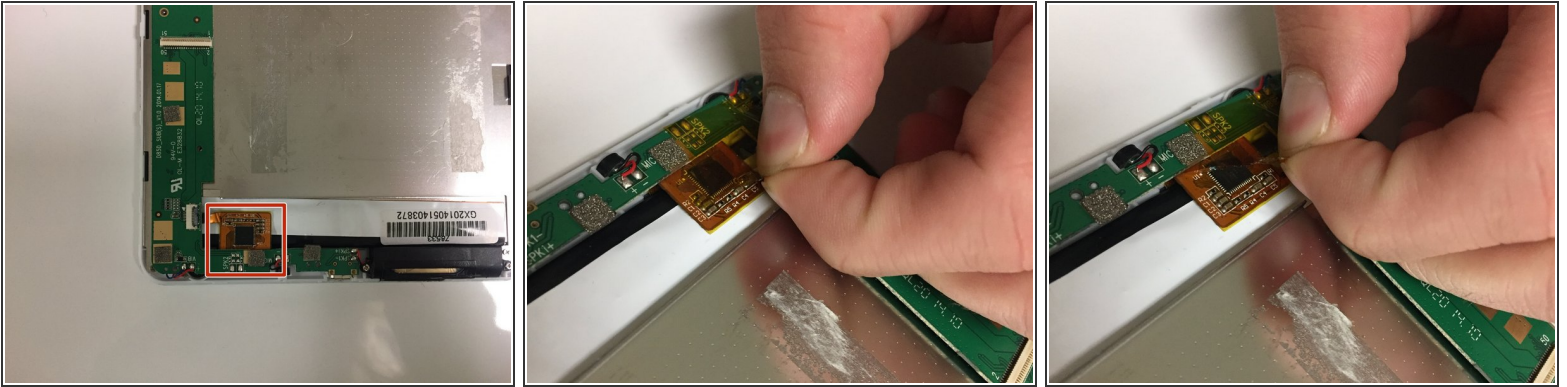
## Step 10



- ★ The smaller portion of the motherboard is located at the bottom with the speaker.
- Using a #000 screwdriver, unscrew the three 3 mm screws that fasten the smaller segment of the motherboard to the tablet.

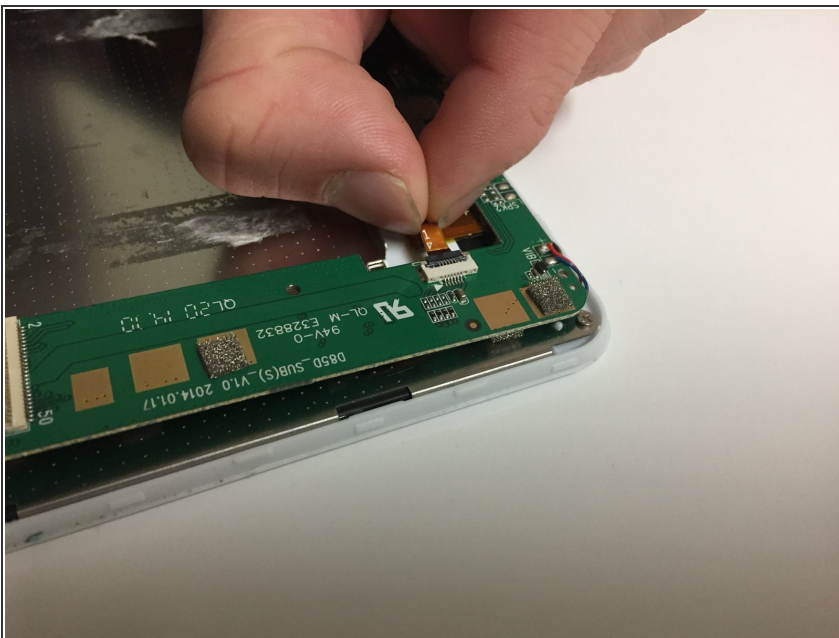


## Step 11



- Located toward the bottom, carefully remove the yellow film.

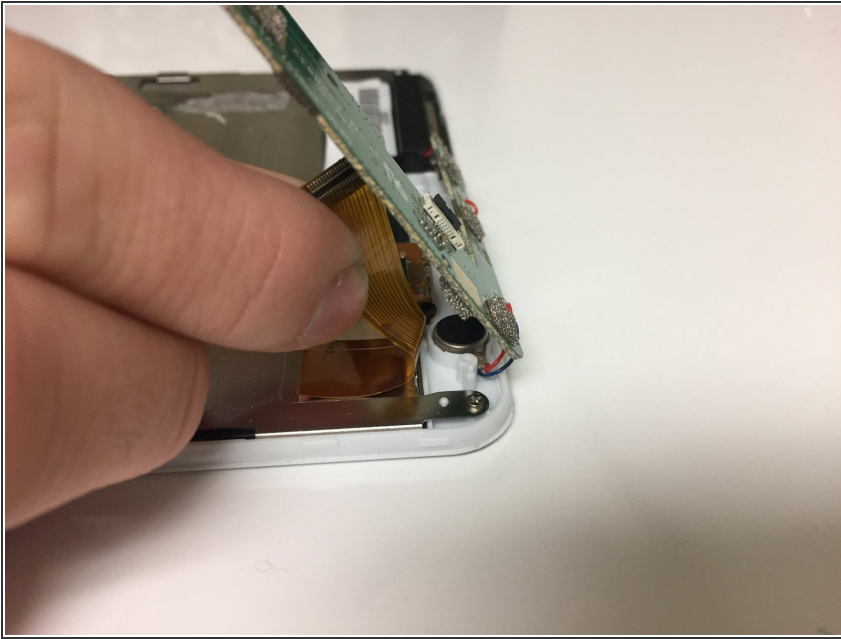
## Step 12



- Gently disconnect the small ribbon found underneath the film.

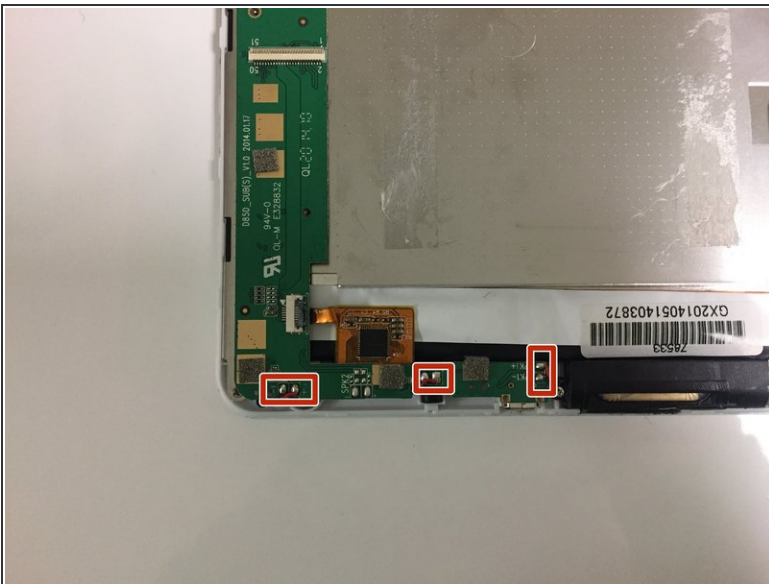


## Step 13



- ⓘ There is another connection found underneath this portion of the motherboard.
- Lifting up the motherboard, disconnect the second ribbon found underneath.

## Step 14



- Using a soldering tool, melt the six metal connections located towards the bottom of the tablet.

⚠ Do not melt the wires.

- ⓘ Once the connections are melted, the rest of the motherboard can be removed from the tablet.

To reassemble your device, follow these instructions in reverse order.