



Trio Stealth G4 Battery Replacement

This guide will show step by step instructions on how to replace a broken or faulty battery in your Trio Stealth G4.

Written By: Matt Arnold



INTRODUCTION

The battery provides the device with the power necessary to operate. The replacement of the battery may be necessary in cases where the device will not turn on or hold a charge.

The disassembly is relatively simple, but will require the use of a soldering iron to disconnect a couple of wires. Be sure to review the [iFixit soldering guide](#) if you do not have experience with soldering. It is also important that you do not bend the battery at any time during the disassembly, as this can cause a fire.



TOOLS:

- [iFixit Opening Tools](#) (1)
 - [Spudger](#) (1)
 - [Soldering Iron](#) (1)
-

- Flip your tablet over so that the back panel is facing up.

A close-up photograph showing a person's hands holding a black smartphone. The phone is held horizontally, and the back of the device is visible. The word "trio" is printed in white on the back. A blue stylus is being used to mark the back of the phone, specifically near the top edge. The person's left hand is supporting the phone from underneath, while the right hand holds the stylus. The background is a plain, light-colored surface.



- Use a plastic opening tool to gently pry the back panel assembly apart from the front casing.
- Start on one edge of the device by inserting the plastic opening tool between the back panel and the front casing using a gentle rocking motion.

Step 3



- Once you have successfully separated one edge of the back panel from the front casing, slide the plastic opening tool along the other edges to detach them as well.
- ❗ The latches keeping the back panel attached to the front casing can sometimes be a little difficult to separate, so don't be afraid to use some force.

Step 4



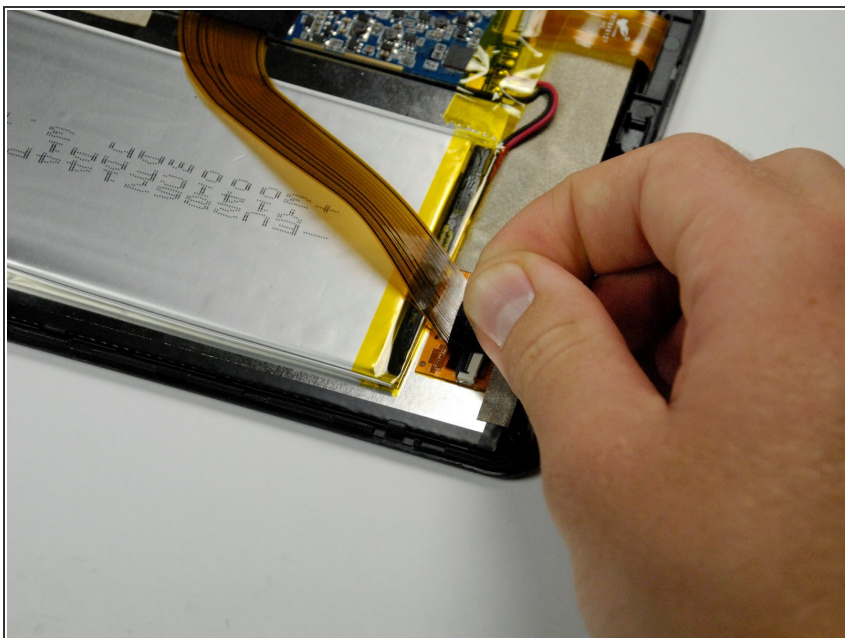
- Remove the back panel from the rest of the tablet and set it aside.

Step 5



- The plastic volume button cover may fall out when you remove the back panel. Set it aside.

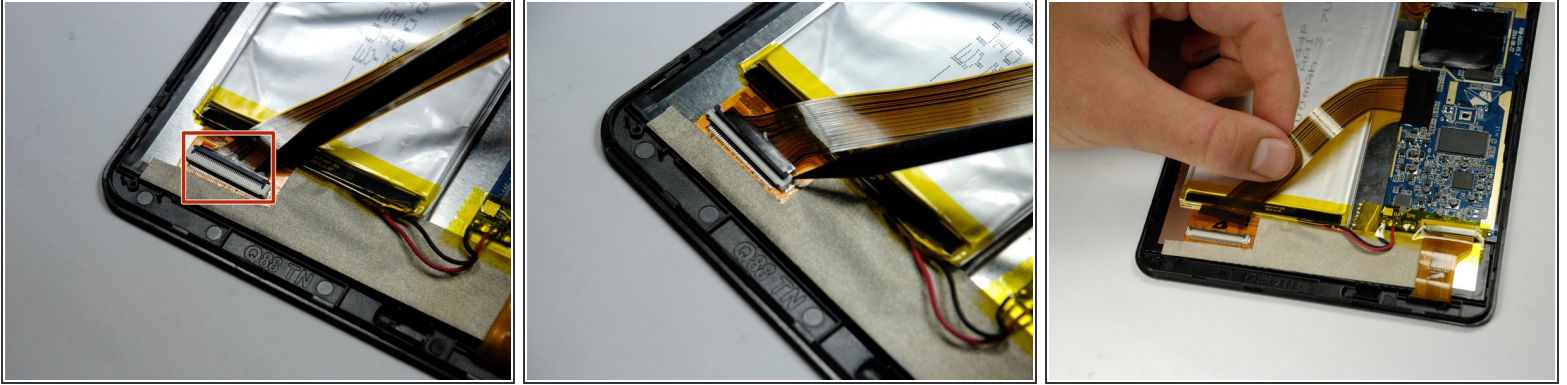
Step 6 — Battery



- Remove the black tape covering the zero insertion force (ZIF) connector that holds down the end of the

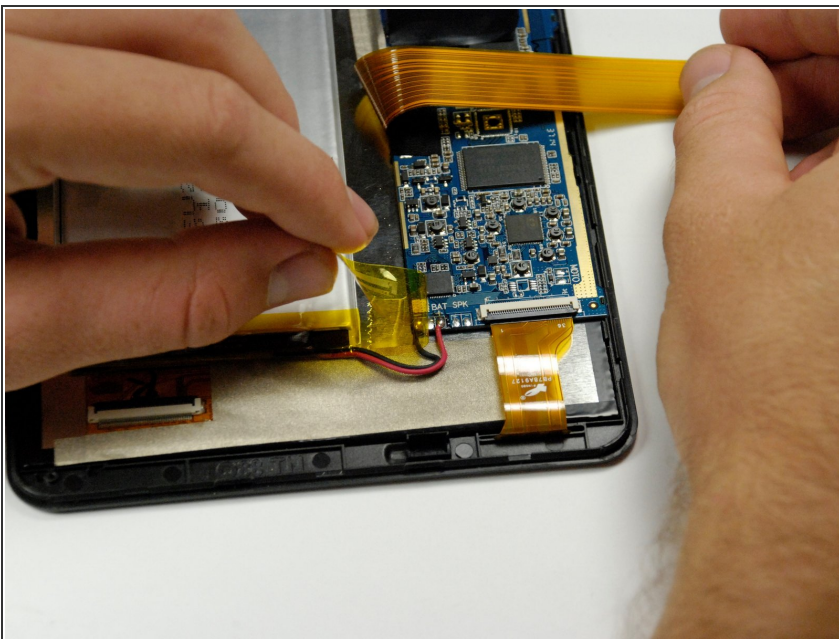
yellow colored ribbon wire that lies across the battery.

Step 7



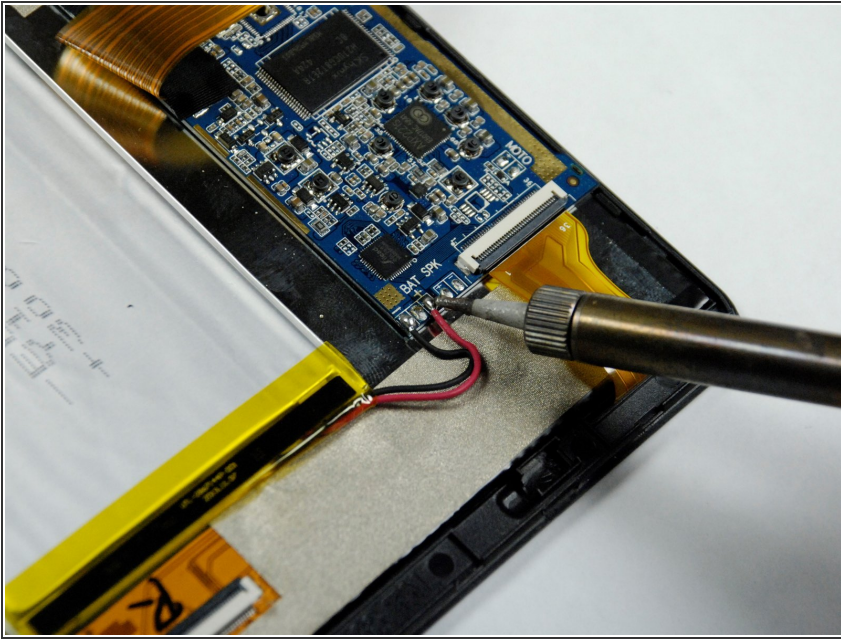
- Wedge a spudger underneath the black flap on the ZIF connector and flip it up.
- Once the flap is up, use your fingers to disconnect the end of the ribbon wire from the connector.

Step 8



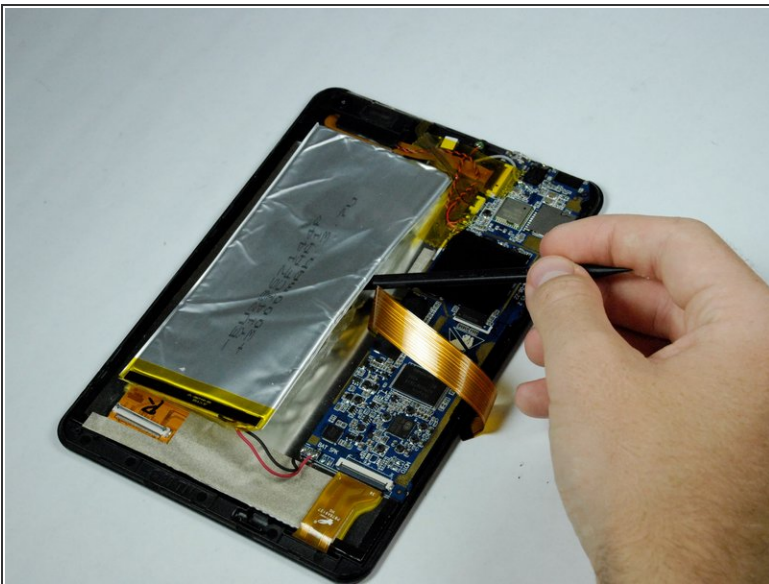
- Carefully remove the yellow tape from the red and black wires connecting the battery to the motherboard.

Step 9




- Use the soldering iron to [melt away the solder](#) from the motherboard connections.
- Once the solder is completely removed, pull the wires away from the motherboard.

Step 10



- Use the spudger to gently dislodge the battery from the tablet.

 Do not bend the lithium-ion battery. This can cause a fire.

To reassemble your device, follow these instructions in reverse order.