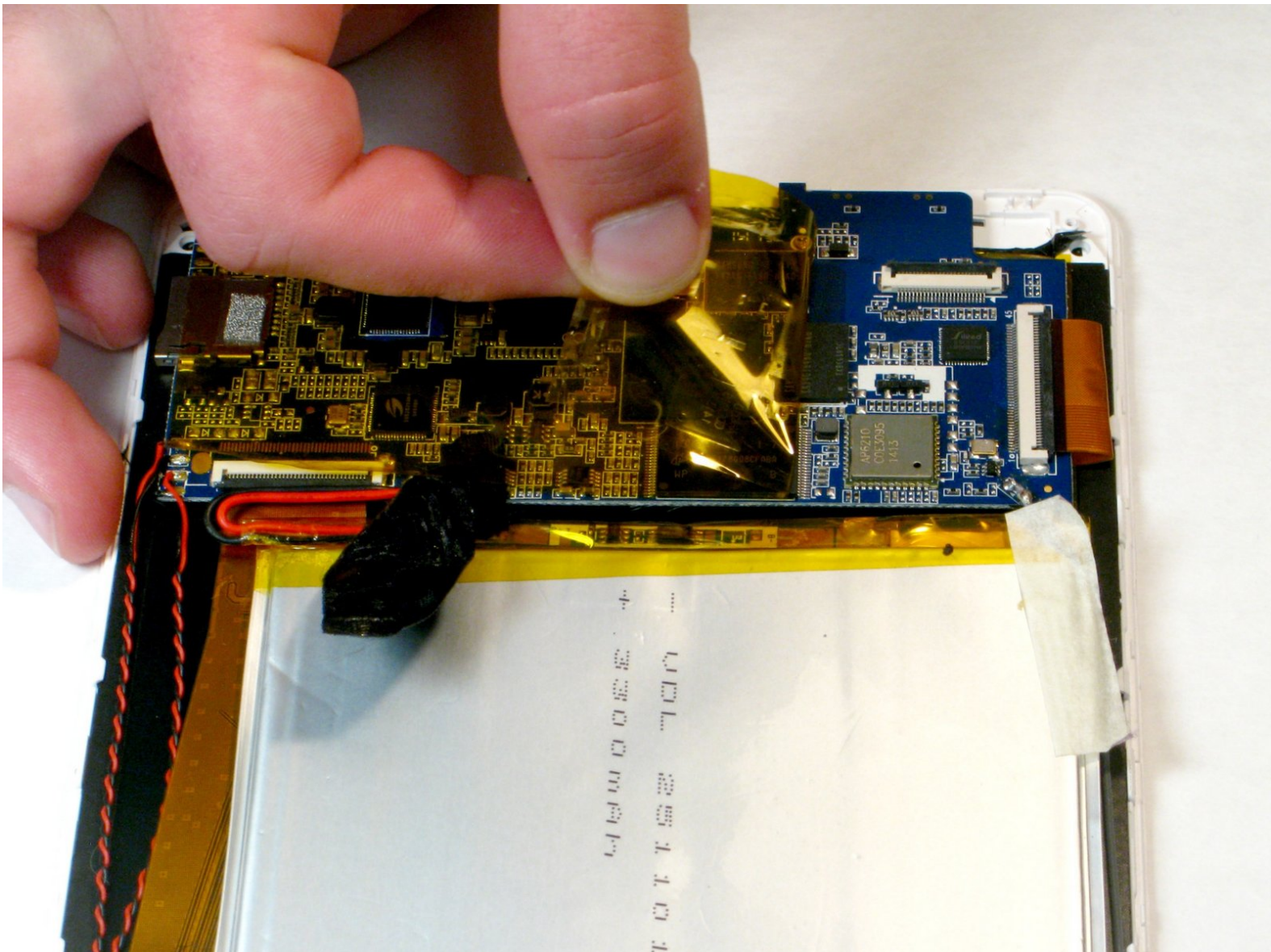




Trio Stealth-G4X Screen Replacement

Replace the screen in your Trio Stealth-G4X tablet when it is malfunctioning.

Written By: Emily Dorsey



INTRODUCTION

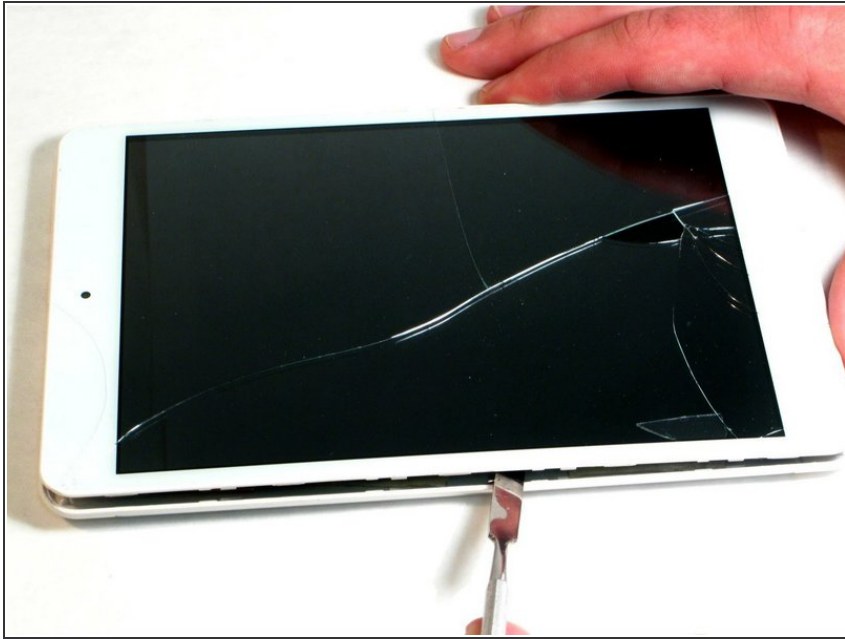
This guide will explain how to replace the screen on your Trio Stealth-G4X tablet. Before attempting this guide, make sure your screen needs replaced. To do this, check for any cracks in the screen. If there are cracks in the screen, they can only be fixed by screen replacement. If there are no cracks in the screen but the tablet is unresponsive, then your digitizer might be damaged. You may be able to replace the digitizer without replacing the LCD screen depending on the amount of damage to the screen. If the image is distorted or unresponsive, the LCD display screen may be damaged and full replacement is needed. For more information about common issues you may have with your tablet before attempting this replacement, visit the [Trio Stealth-G4X Troubleshooting Page](#).



TOOLS:

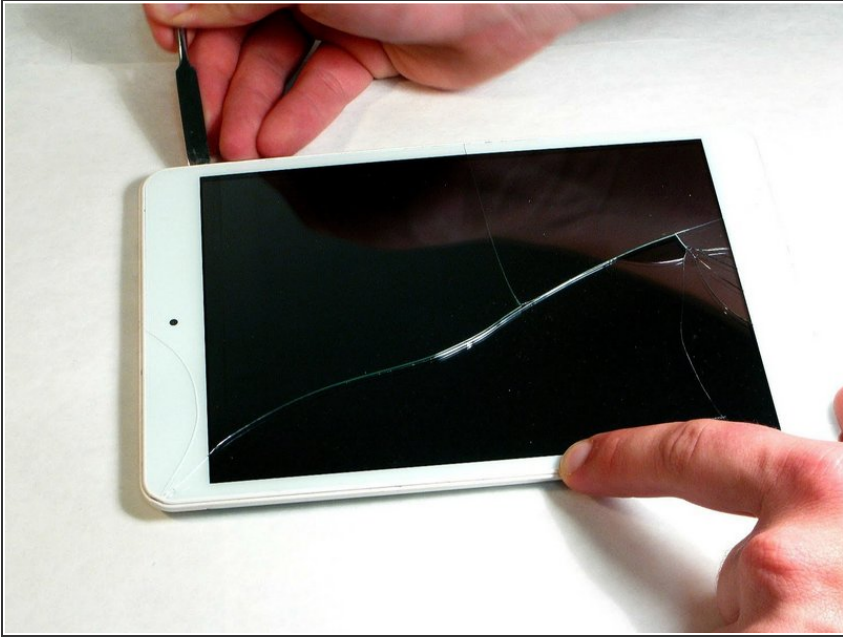
- [64 Bit Driver Kit](#) (1)
 - [iFixit Opening Picks set of 6](#) (1)
 - [Spudger](#) (1)
-

Step 1 — Camera



- Starting near the middle edge of the Trio Stealth-G4X tablet, gently work an opening pick or spudger in between the seams of one side of the tablet.

Step 2



- Work your way around all four corners of the tablet, unlocking all of the retaining tabs that hold the tablet together. This will allow you to separate the two halves of the tablet and access the motherboard.

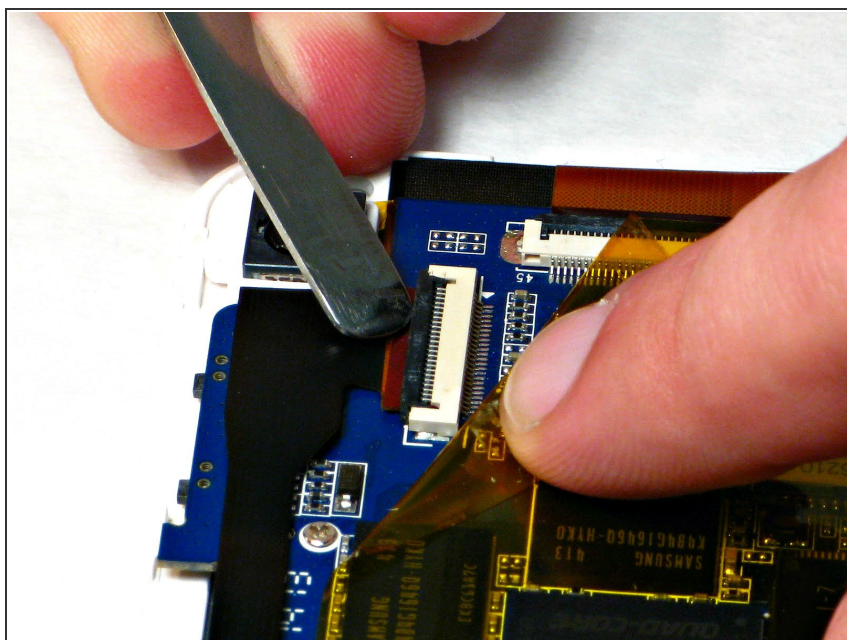
⚠ Be sure not to over penetrate while separating the two halves as you may damage the tablet's internal hardware.

Step 3



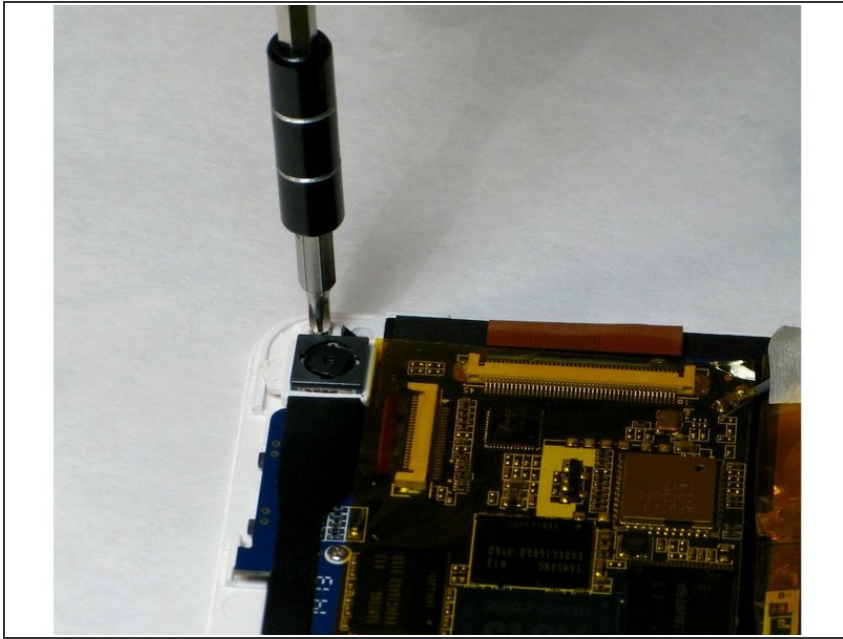
- Once the two halves are separated, set aside the back cover of the tablet as you will not need it until reassembly. Now locate the camera on the motherboard of the tablet.

Step 4



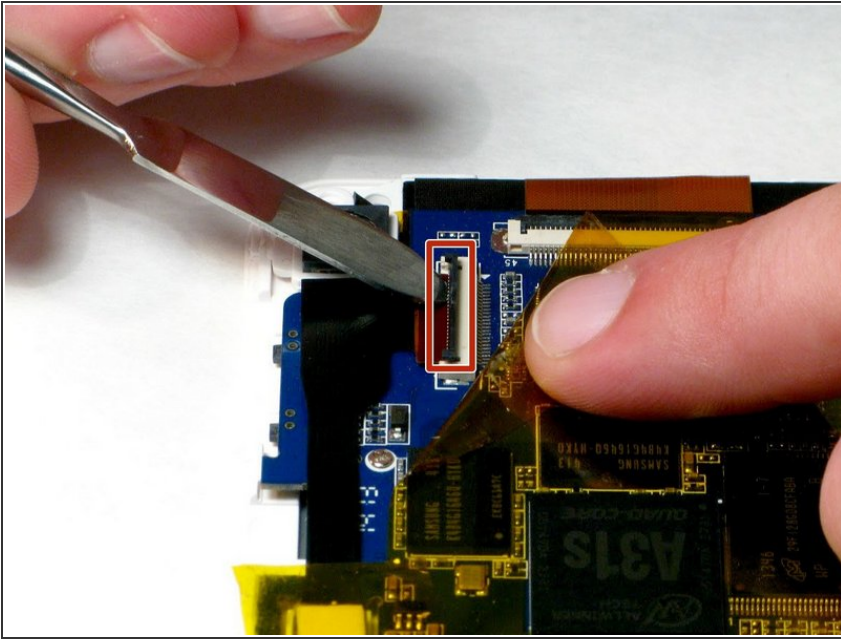
- Peel back the yellow protective film on the motherboard to access the camera's ribbon cable.

Step 5



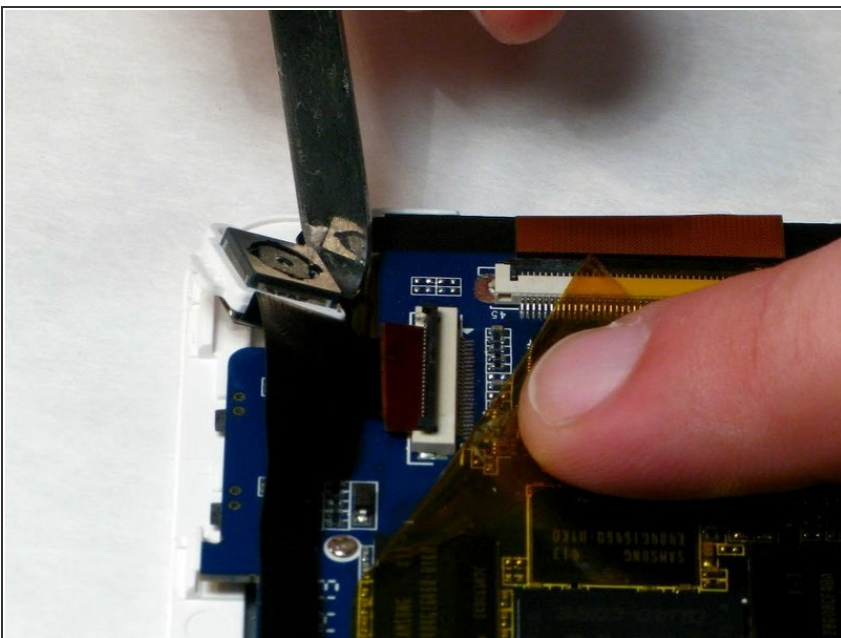
- Take the Phillips head screwdriver and unscrew the 3mm screw right above the camera assembly. Place the screw aside so you do not lose it.

Step 6



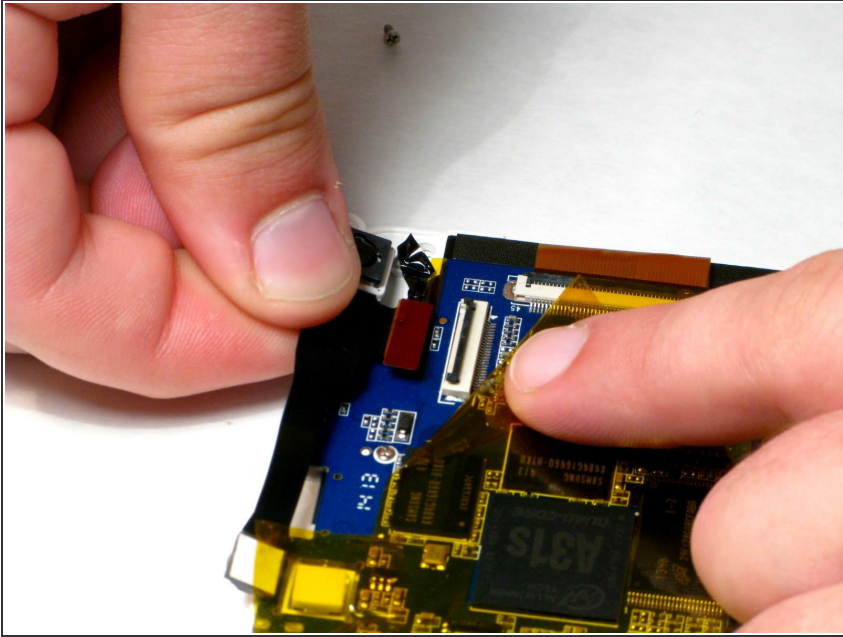
- Use a spudger to pry the black tab on this connection point upwards. This will unlock the ribbon cable that connects the camera to the motherboard.
 - Once unlocked, very carefully pull the cable out of the socket to disconnect it.
- ⚠ Be very delicate with the ribbon cable because it can tear easily.

Step 7



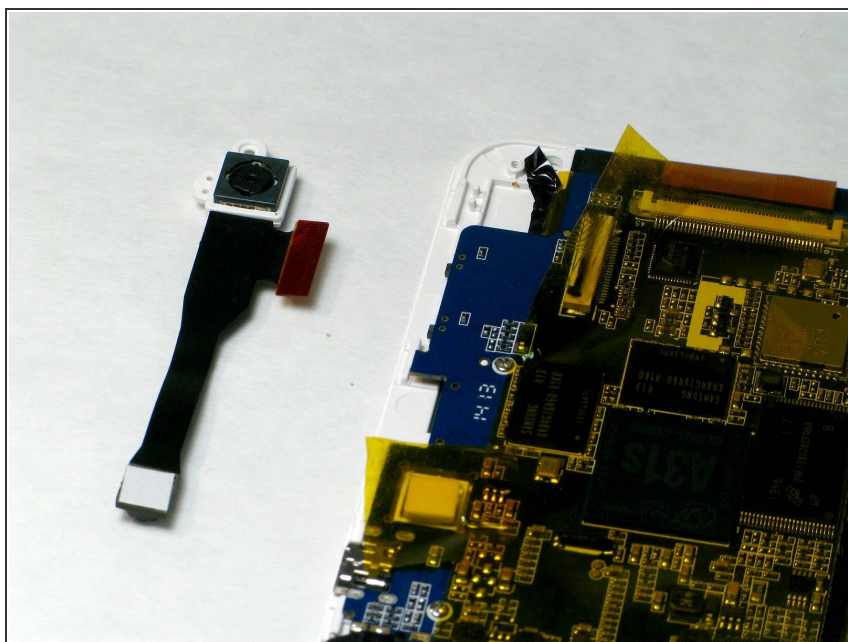
- Now you can remove the camera assembly. Use a spudger to gently loosen the camera out of place.

Step 8



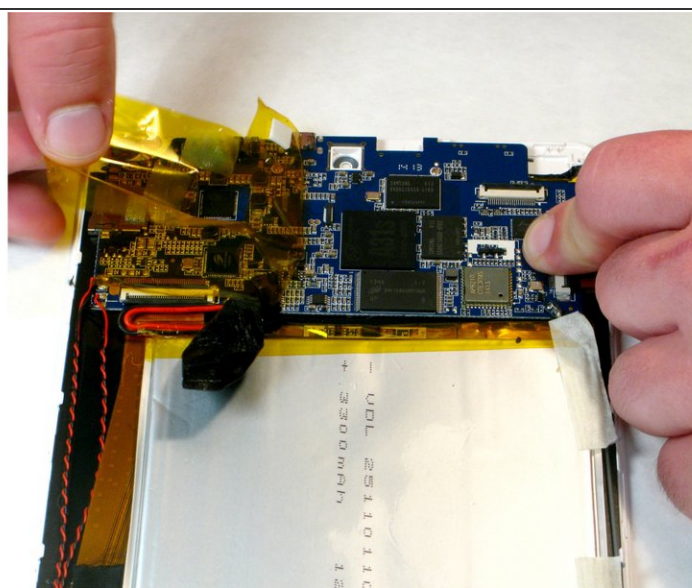
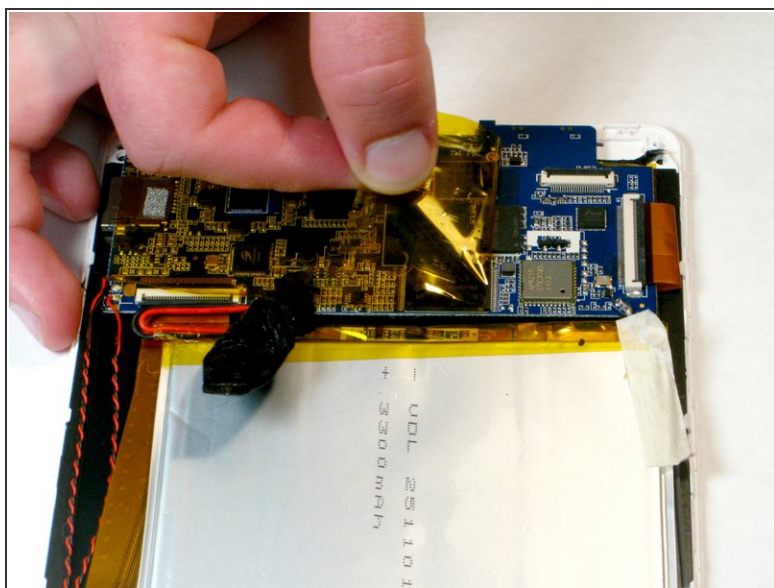
- Grab the camera assembly with your fingers and gently lift it out of the tablet.

Step 9



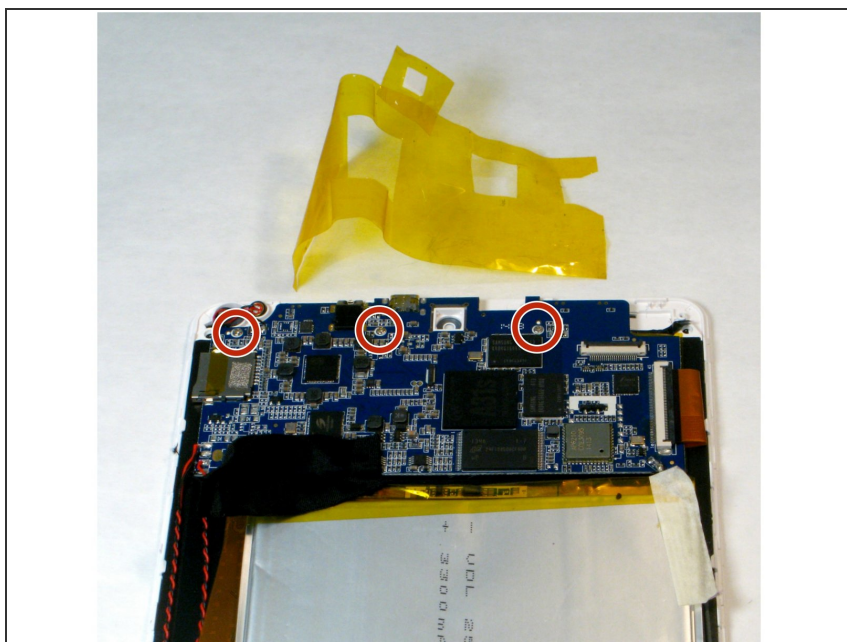
- You have now removed the camera assembly and can set it aside. Insert replacement camera by following the steps in reverse. Then reassemble the tablet the same way.

Step 10 — Screen



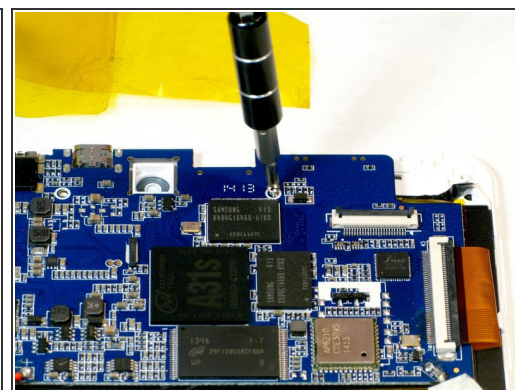
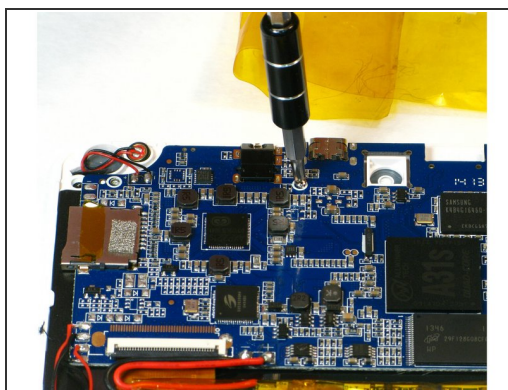
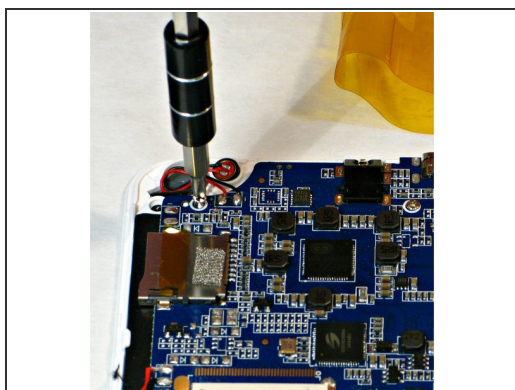
- Slowly remove the yellow film covering the motherboard.

Step 11



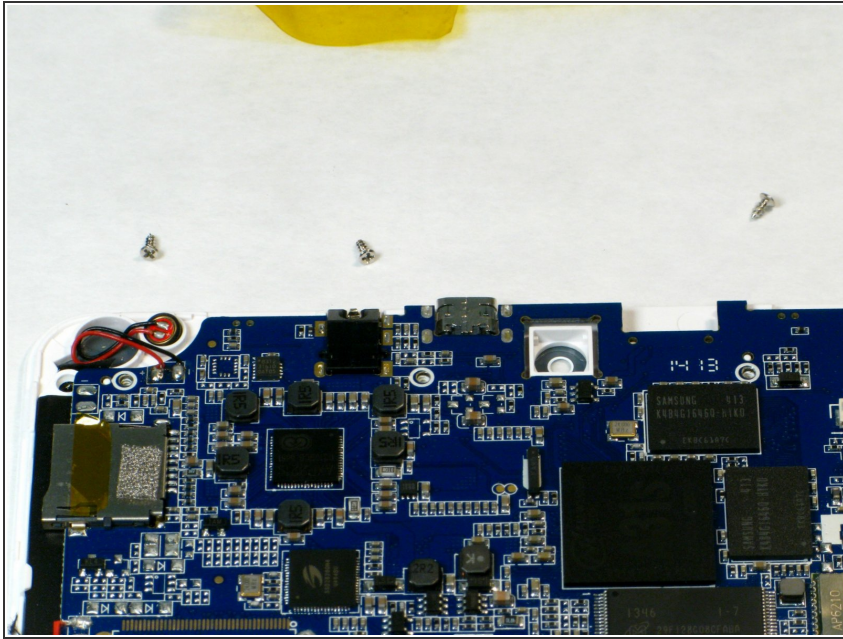
- Locate the three remaining 3mm screws retaining the motherboard.

Step 12



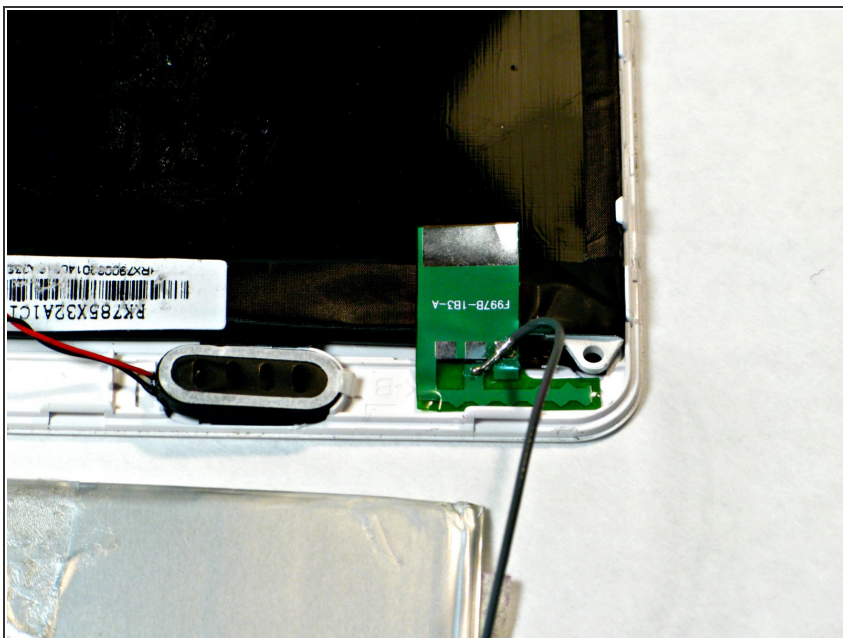
- Use the Phillips Head Screwdriver to remove the three remaining screws.

Step 13



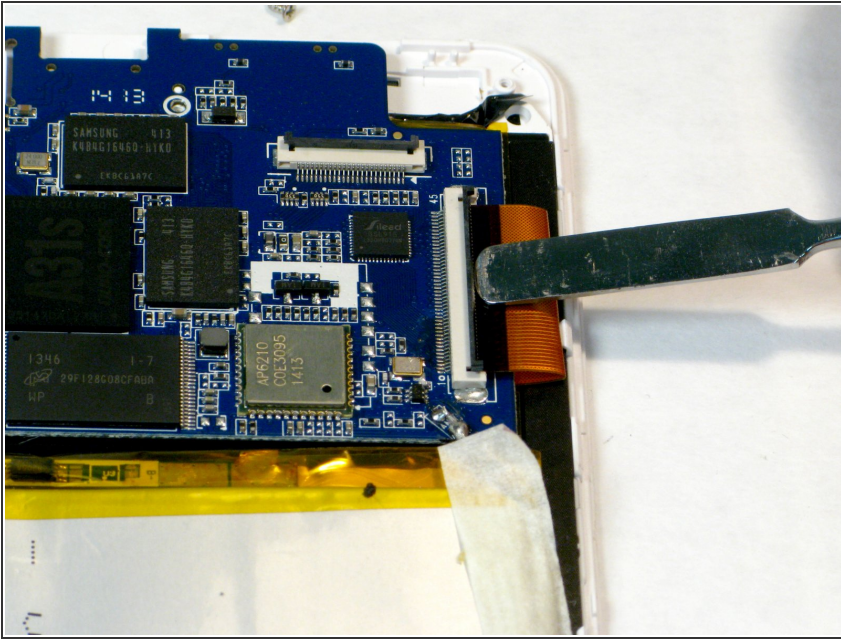
- Set the small screws aside so that you do not lose them.

Step 14



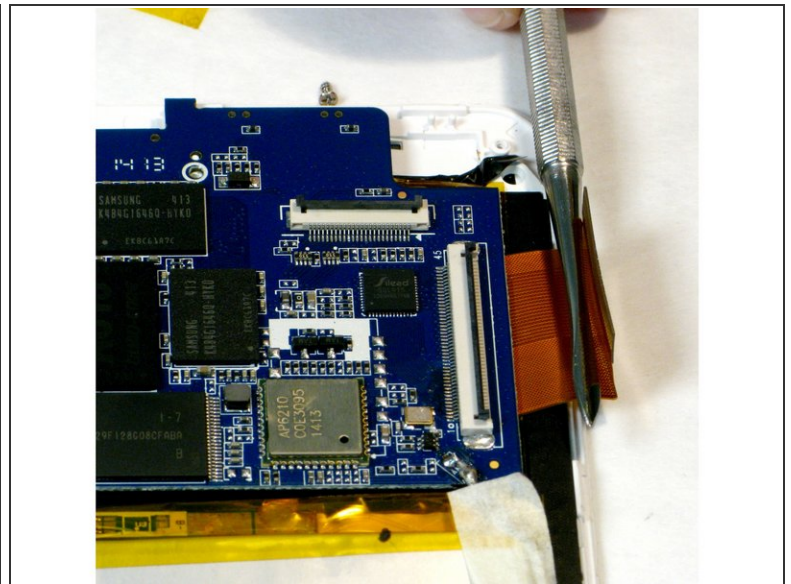
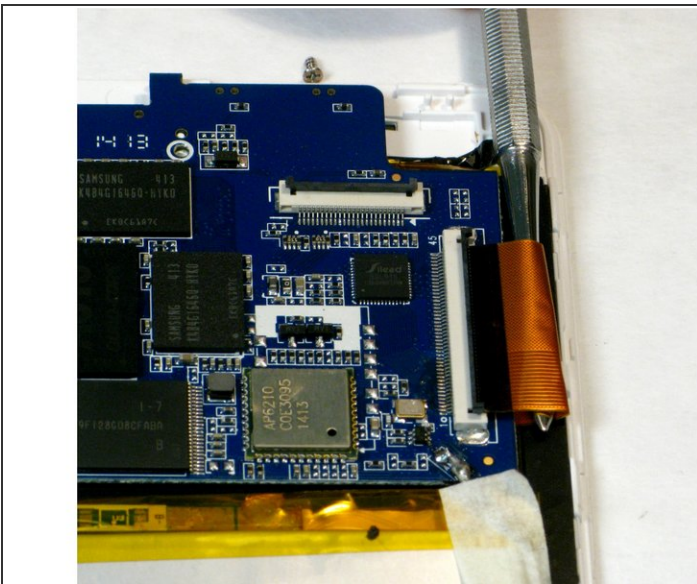
- Next, locate the green wiring band at the bottom of the battery. Although it has soldering points, you will not need to desolder the band for this replacement. Very carefully use a spudger to peel the wiring band off of the battery pack.

Step 15



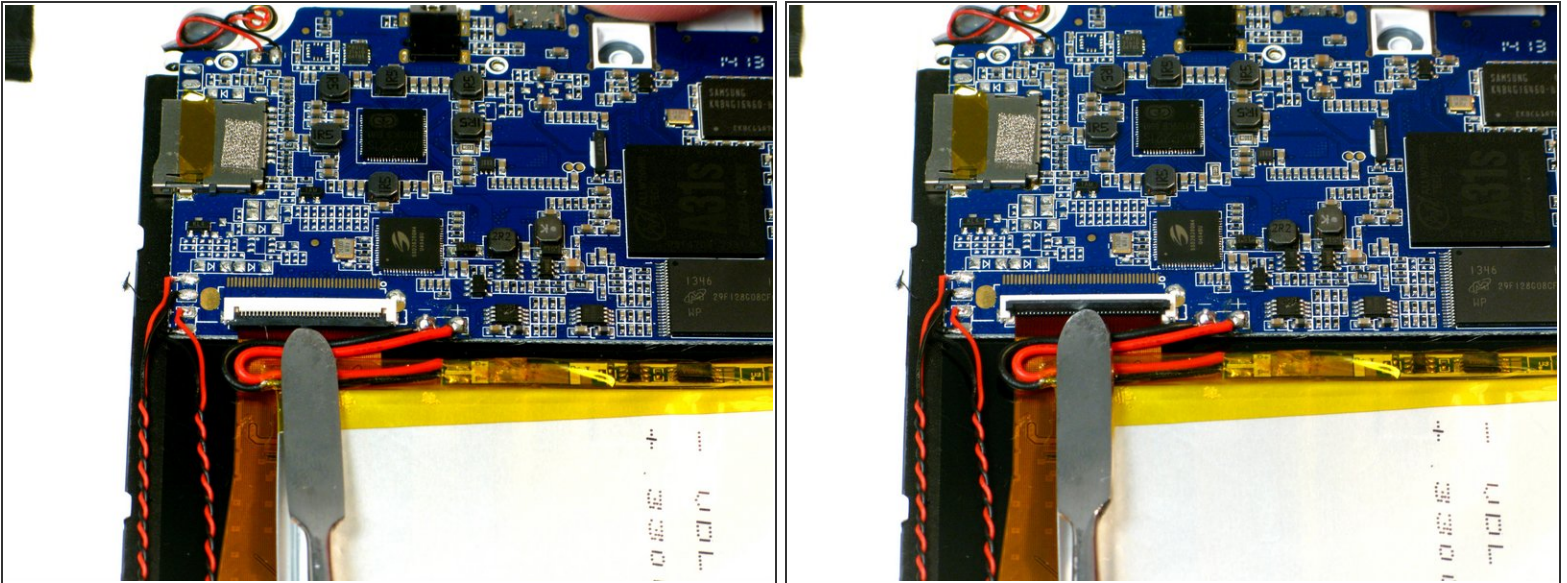
- Find the ribbon cable in the top right corner of the tablet. This connects the digitizer to the motherboard. Use a spudger to pry the black tab upwards, unlocking the ribbon cable connector.

Step 16



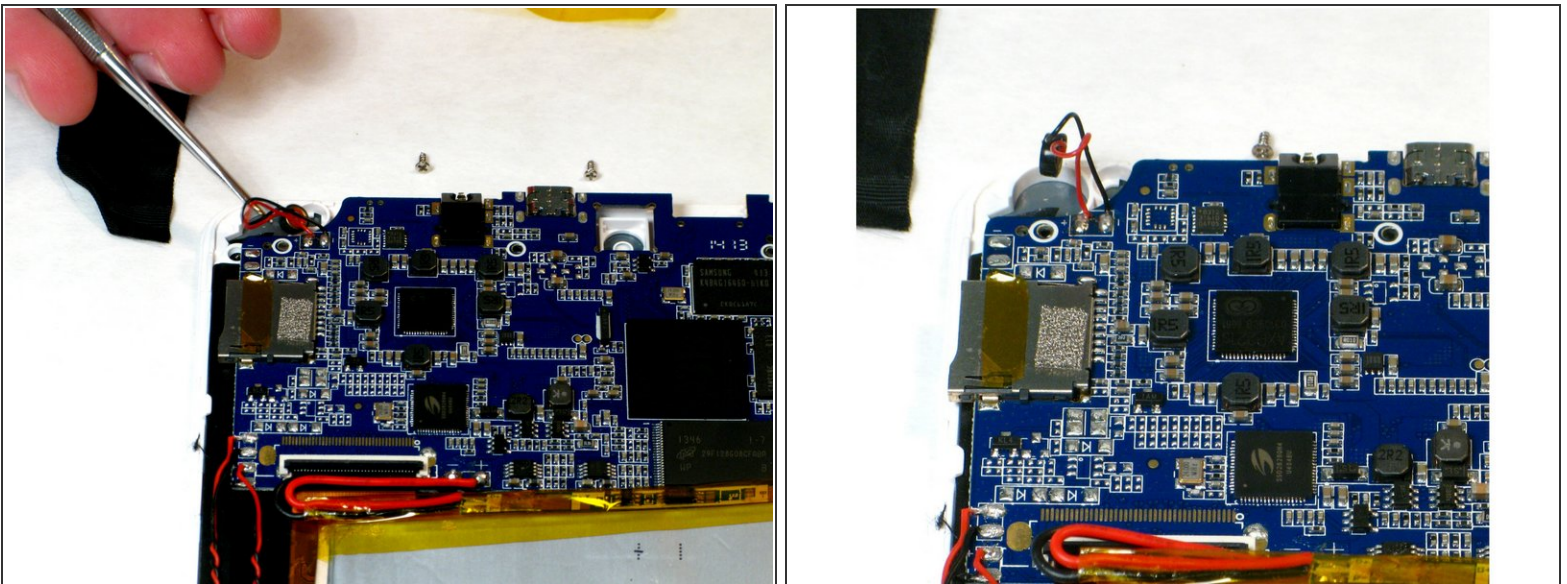
- Use a spudger to lift the right side of the ribbon cable and disconnect it from the motherboard.

Step 17



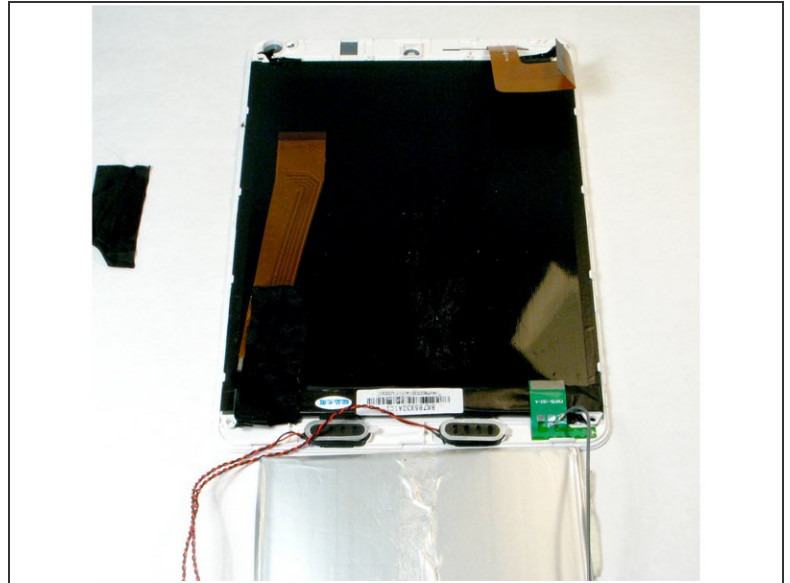
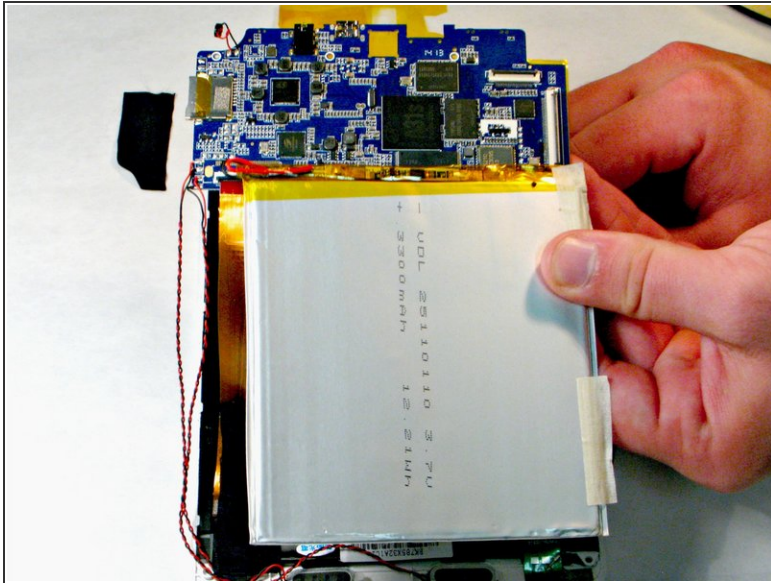
- Find the second ribbon cable near the top left corner of the tablet. This connects the LED screen display to the motherboard.
- Use a spudger to pry the black tab upwards, disconnecting the ribbon cable.

Step 18



- Locate the microphone in the top left corner of the tablet. This piece easily pops out of the hole it is sitting in with the help of a spudger.

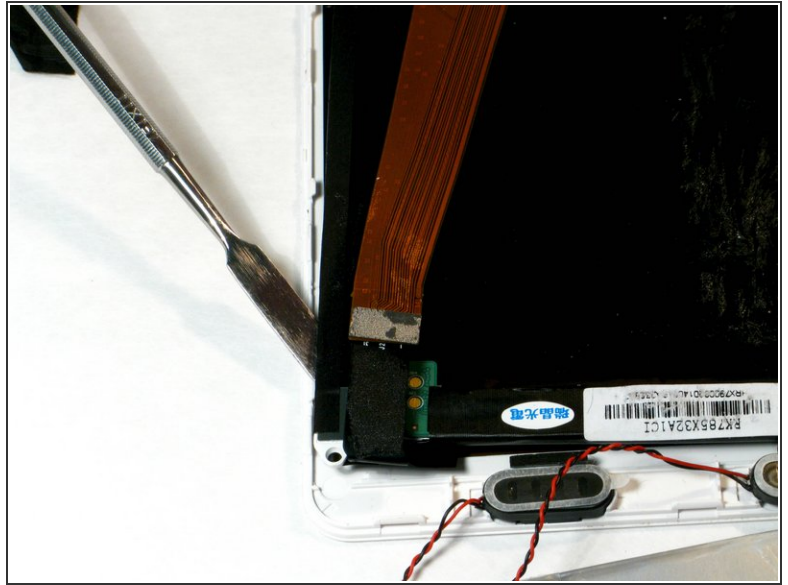
Step 19



- After all of these steps, the motherboard, speakers, and battery should all be able to be removed as one piece. The battery may have adhesive retaining it. To remove it work a pry tool underneath carefully separating it from the back of LCD screen.

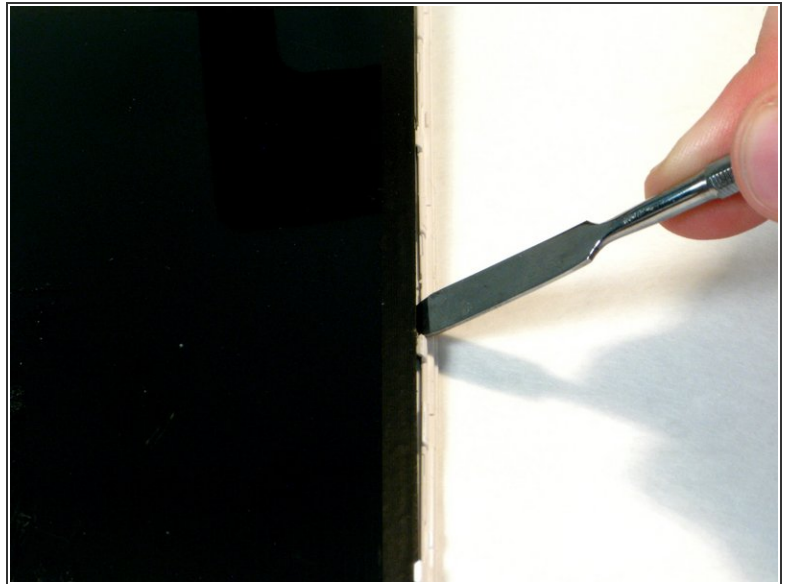
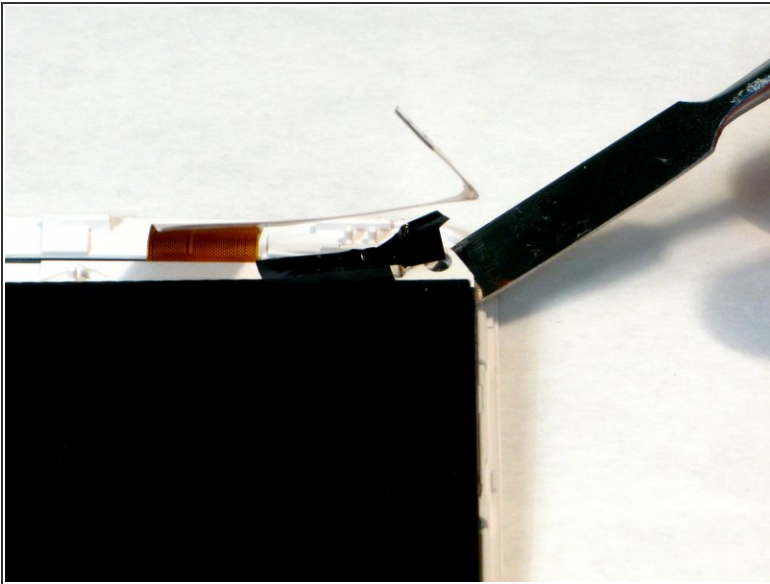
⚠ Be careful when lifting all of these components out of the tablet.

Step 20



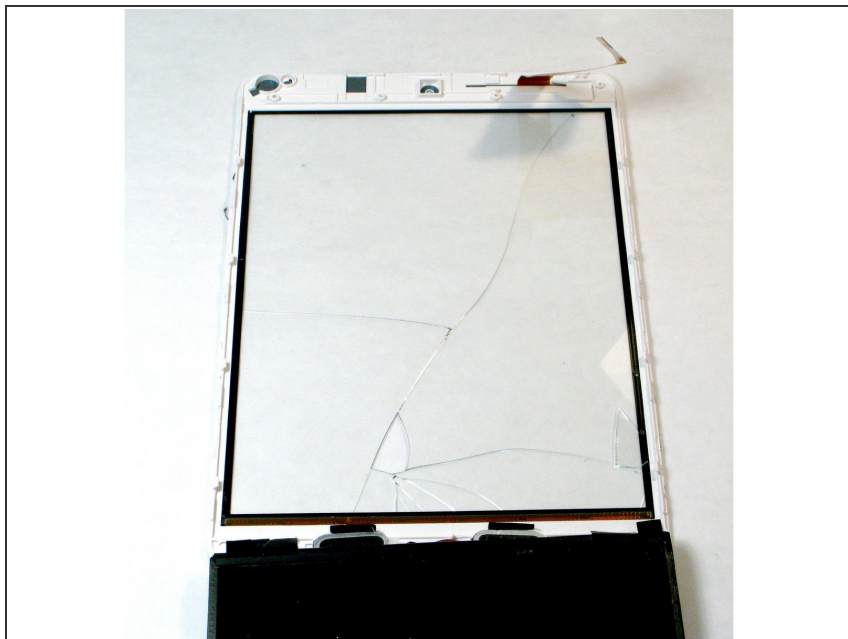
- Next, gently work a spudger in between the screen and tablet in the top left corner. This starts to separate the adhesive holding the screen and tablet together.
- Work your way down the left side of the tablet.

Step 21



- Start in the top right corner of the tablet and use a spudger to work your way down the right side, further separating the screen and the tablet.

Step 22



- The screen should now be able to be removed from the tablet.
- Be sure to clean off any leftover adhesive from the tablet before installing the new screen. Re-installation and assembly can be done by following these steps in reverse order.

To reassemble your device, follow these instructions in reverse order.