



# Tune-up A Rancilio Silvia Espresso Machine

Learn how to replace the grouphead gasket and screen. Deep clean the machine.

Written By: Samuel Kanenwisher



## INTRODUCTION

This guide is for the DIY'er who wants to do a basic repair on the Rancilio Silvia espresso machine. We take you step-by-step with a visual guide through the process of replacing the grouphead gasket and screen. Learn how to conduct a deep cleaning of your machine.

Make sure you do not rush the process. The parts are not readily available at the local hardware store. If you damage the parts it may take several days to get new parts.

If you have doubts about your ability to do the repairs yourself give your machine to a professional to do the repairs. These machines are not inexpensive to replace if damaged.

On the other hand, this may be your last effort to fix your old machine before you buy a new one. If so, give it a try. Your efforts may save you the cost of a new machine.



### TOOLS:

- [Craftsman 5/16" x 1 3/4" slotted screwdriver](#) (1)
- [1 Awl](#) (1)
- [Small Flathead Screwdriver, hammer, fire](#) (1)
- [Small Wire Brush](#) (1)
- [Canned Air](#) (1)
- [3/16" Punch](#) (1)
- [Hook & Pick Set](#) (1)



### PARTS:

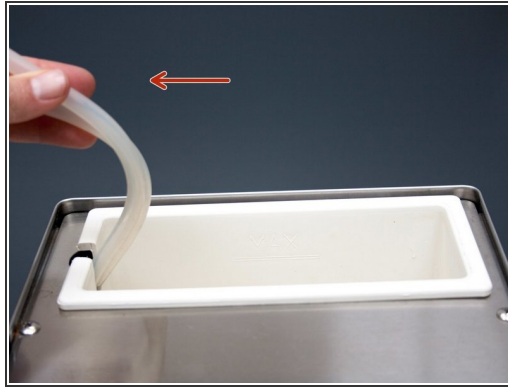
- [Coffee Detergent \(We like Joe Glo\)](#) (1)
- [Rancilio Silvia Grouphead Gasket and Screen](#) (1)

## Step 1 — Identify Version of Machine



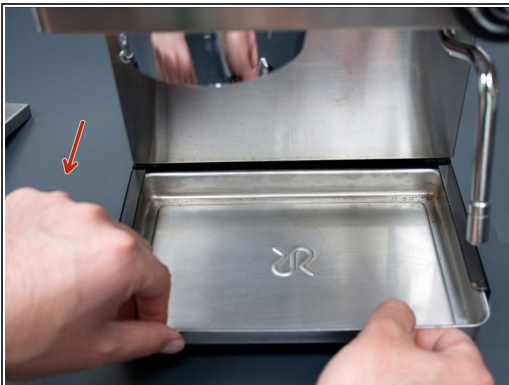
- i** This section assists in identifying the version of machine you are repairing. The version matters because there are slight variations in the way the repairs are performed.
- This is the version 3. It is identified by the ergonomic handle, the larger steam handle with a silver cap on it, and a steam wand that is mounted on a ball joint.
  - i** Version M has the same group head configuration as Version 3. In appearance, Version M has two lights on the front of the machine and no light on the power switch. Version M is the newest version.
  - This is the version 2. It is identified by the smooth handle, the steam knob with ridges, and the plastic Rancilio logo.
  - This is version 1. The handle has ridges on it. The logo is silk screened on the machine.

## Step 2 — Remove Water Tank



- Lift the water tank cover and put it aside.
  - Lift hoses from the tank and pull to the side.
  - Pull tank straight out of machine.
- i** Make sure to tuck both hoses inside machine.

## Step 3 — Remove Tray & Flip



- Remove Drip Tray
  - Flip machine upside down.
- !** Make sure hoses stay tucked in machine. They could get cut by the case laying on them.
- Remove screw with flathead screwdriver.
- i** The new parts kit comes with a 8mm hex head screw.

## Step 4 — Removing Screen and Diffuser



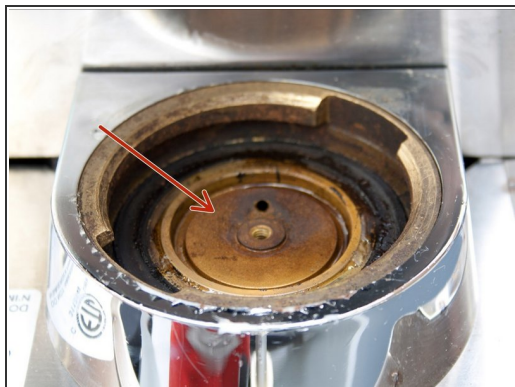
- Our favorite screwdriver for extracting difficult to remove screws. It has a big handle for a good grip. The screwdriver cannot be too long or it will hit the drip tray and won't fit. This is a Craftsman 5/16" x 1 3/4" slotted screwdriver.
- Remove the screen. It may take some prying. If it is really stuck you can use a channel lock pliers.
- ⚠ It is okay to damage the old screen. Just be careful not to damage the brass housing.
- Remove the small stainless steel diffuser.

## Step 5 — Deep Clean Grouphead Part A



- Soak this dirty little guy in coffee detergent with hot water. Then clean it again with a wire brush if needed.
- ⓘ Make sure to clean out all the water channels on the back side of the diffuser.
- On Version 3 you will need to remove the brass disc. Just lift it out. If it is stuck you can use a channel lock pliers to get it loose. Be gentle! Careful not to damage the brass. You cannot remove the brass disc on Version 1 & 2
- This is the brass disc after it is been removed. Soak it in coffee cleaner with hot water for about 10 minutes. Then, scrub both sides with a steel brush. Get leftover coffee residue off disc.

## Step 6 — Deep Clean Grouphead Part B



- Picture of grouphead with brass disc removed on Version 3.
- An awl works great for removing grouphead gaskets from espresso machines.
- Pry the gasket up with the sharp tip of the awl.

⚠ Patience! You don't want to stab or poke yourself.

## Step 7 — Deep Cleaning Group Head Part C



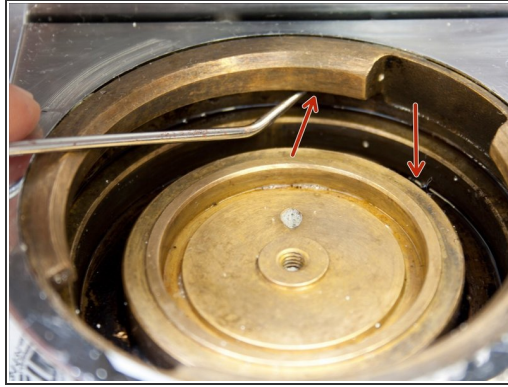
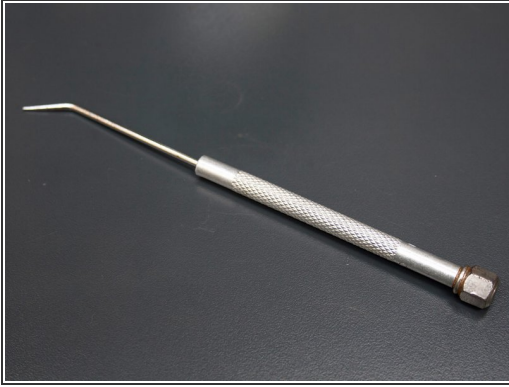
- If you are lucky the gasket will still be intact after you remove it. However the gasket may be hard as a rock and difficult to remove.
- ⓘ You may need to use the awl and a hammer to split the gasket into pieces before removal.
- ⚠ Careful not to damage the brass grouphead when splitting the gasket.
- It's time to clean the bottom of the grouphead.
- We like to pour about a 1/2 tsp of coffee cleaner on the bottom of the grouphead.

## Step 8 — Soaking Grouphead with Coffee Cleaner



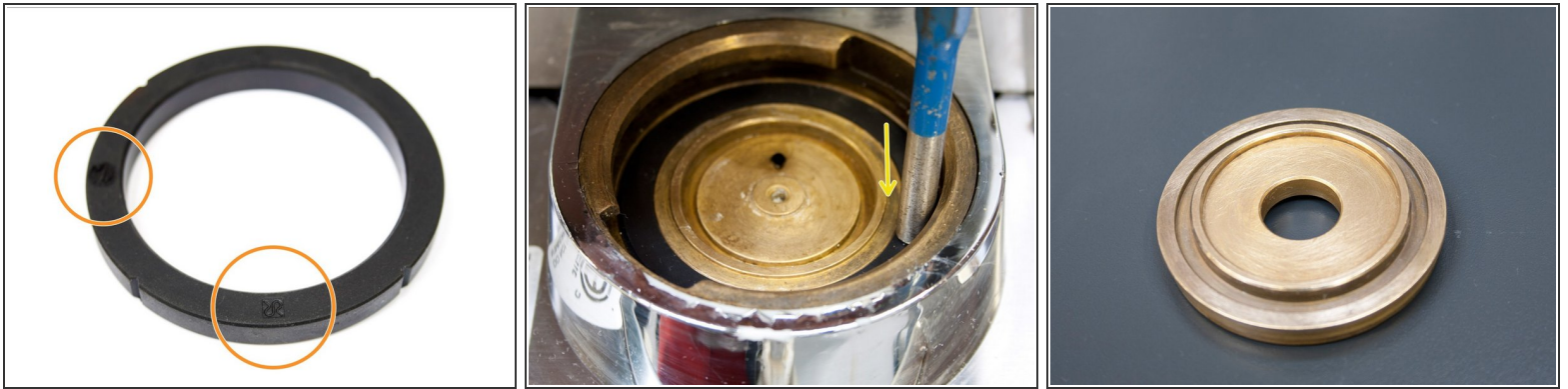
- Pour boiling hot water on the grouphead and let it soak for about 10 minutes.
- Take a wire brush like the one in the picture. Scrub the top of the grouphead clean.
- ⓘ Take some paper towel and soak up the liquid in the grouphead. The grouphead doesn't need to be perfectly dry at this point.

## Step 9 — Scrape Grouphead of Excess Coffee Debris.



- Get a pick like the one in the image. Clean the inside edges of the grouphead.
- ⓘ Clean all surfaces. First, focus specifically on the top rim that comes in contact with the portafilter. This helps the portafilter to seat correctly.
- ⓘ Focus on the bottom surface. Cleaning this surface helps the gasket to seat correctly.
- Use compressed air to remove all excess debris from the grouphead.
- ⚠ If you have Version 3 do not install the brass disk until you are finished installing the new gasket.

## Step 10 — Insert New Grouphead Gasket



- Get the New grouphead gasket.
- ⓘ Make sure it is a Rancilio Brand gasket. if it is an imitation it may not be exactly the right size. This could cause many problems.
- Next with the lettering down insert the gasket into the grouphead. We use a 3/16" punch to gently push the gasket into place. Make sure the gasket is level on the entire surface.
- ⓘ If you have difficulty getting the gasket in or getting it level you may need to do a deeper cleaning of the grouphead.
- if you have version 3 insert the brass disk you scrubbed earlier.

## Step 11 — Replace Screen and Diffuser



- Then insert the stainless steel diffuser that you cleaned earlier.
- ⓘ The slotted side with the water channels should be facing down. Therefore, you will not be able to see the water channels when the diffuser is installed correctly.
- Install the new screen.
- ⓘ We highly recommend against using the old screen. It can be almost impossible to get perfectly clean because it has two layers.
- Now put the screw in nice and tight. Use a 8mm socket wrench to do so. The screen should flex downward toward the grouphead when tightening the screw.
- ⓘ Congratulations! You have finished the repair.
- ★ We will be happy to hear about your experience! Please share it with us on our Facebook page <https://www.facebook.com/pages/Kanen-Cof...> Thank you!

You are almost done. Turn your machine over. Pull the hoses out. Install the water tank with the slot on the left side for the hoses. Put the hoses in the tank. Add water, put the lid on. Install the drip tray and grate.

Now, pour a shot of espresso and see how your machine works.