



Turnigy Evolution Mode 2 to Mode 1 Conversion

The Turnigy Evolution is a transmitter designed for drone Pilots. This guide will show you how to move the throttle from the left stick to the right stick.

Written By: Tarun Thiruma



INTRODUCTION

The Turnigy Evolution is a highly capable RC transmitter designed especially for drone Pilots. This guide will show you how to convert a Turnigy Evolution from Mode 2 (with the throttle on the left and pitch on the right) to Mode 1 (with the throttle on the right and the pitch on the left).



TOOLS:

- [Phillips #1 Screwdriver](#) (1)
-

Step 1 — Turnigy Evolution Mode 2 to Mode 1 Conversion



- The Turnigy Evolution comes out of the package in Mode 2, as shown.
- Notice how the right stick is centered both horizontally and vertically, while the left stick is only centered horizontally.

Step 2



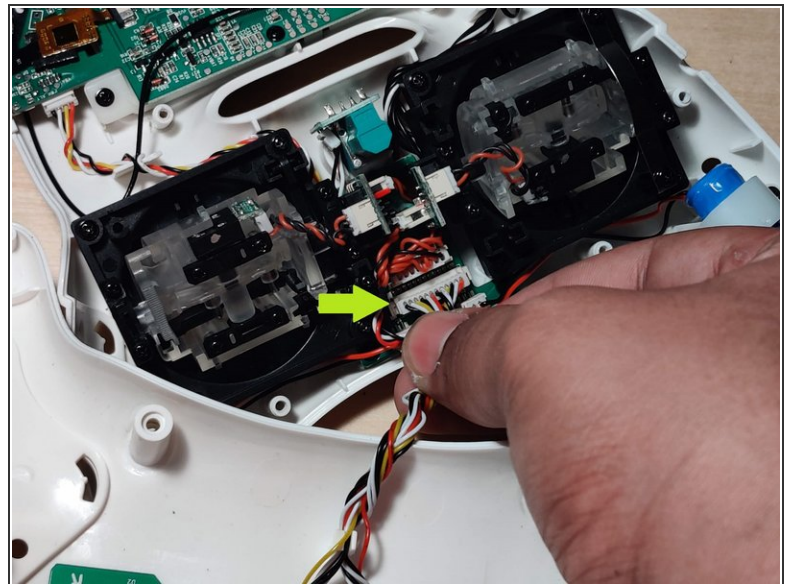
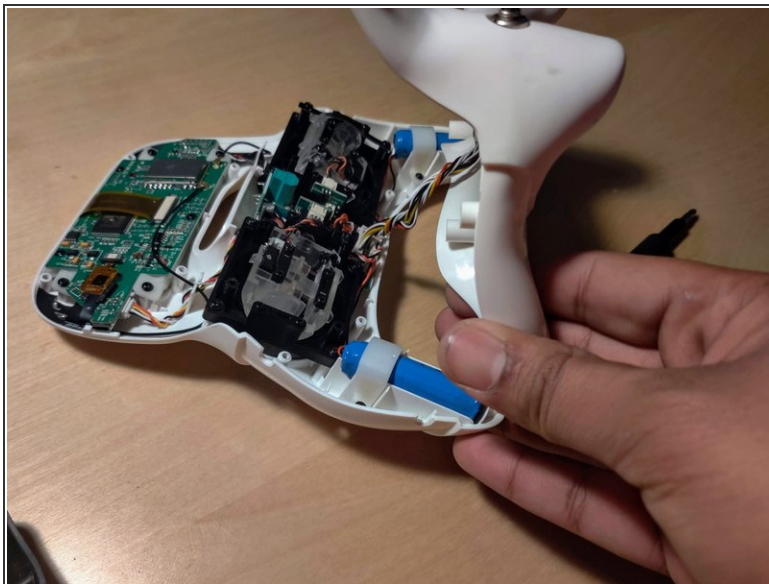
- To begin disassembly, remove the black rubber grips from the sides of the radio.
- A flat pry tool may help to get underneath the grips, but they will come off quite easily, only held in by rubber tabs.

Step 3



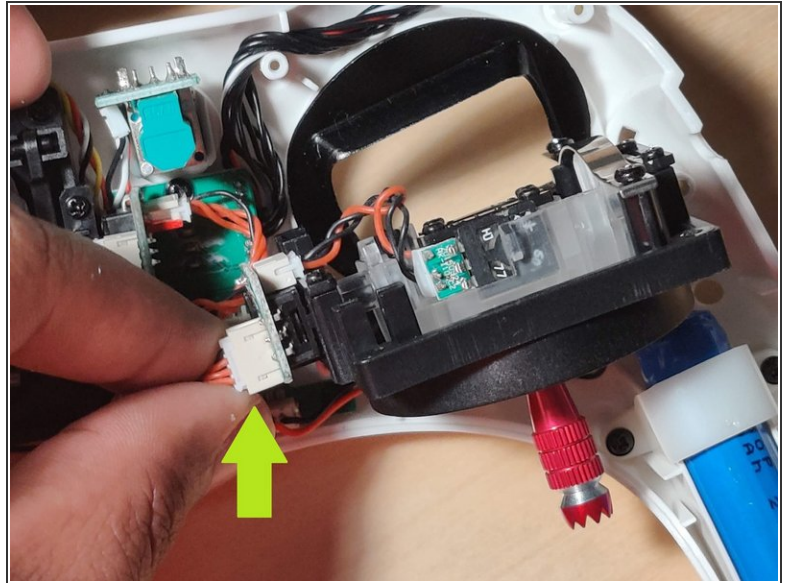
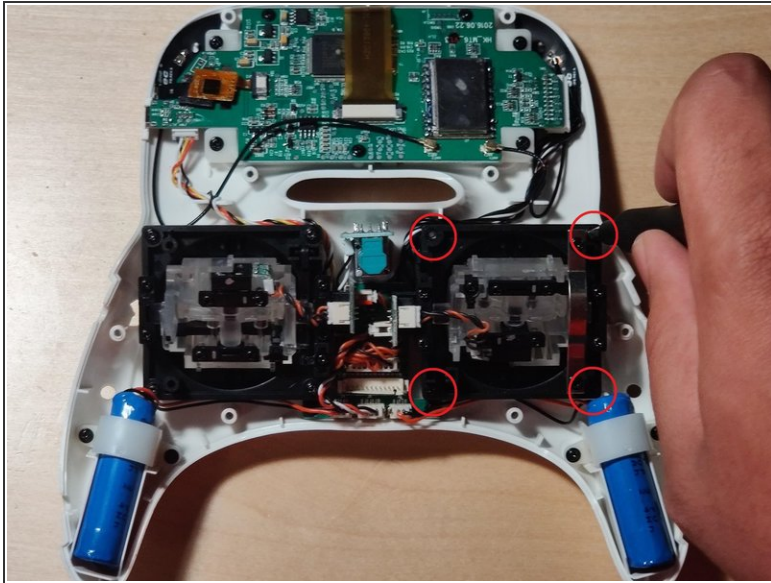
- Use a #1 Phillips head screwdriver to remove the 8 screws from the back of the case.

Step 4



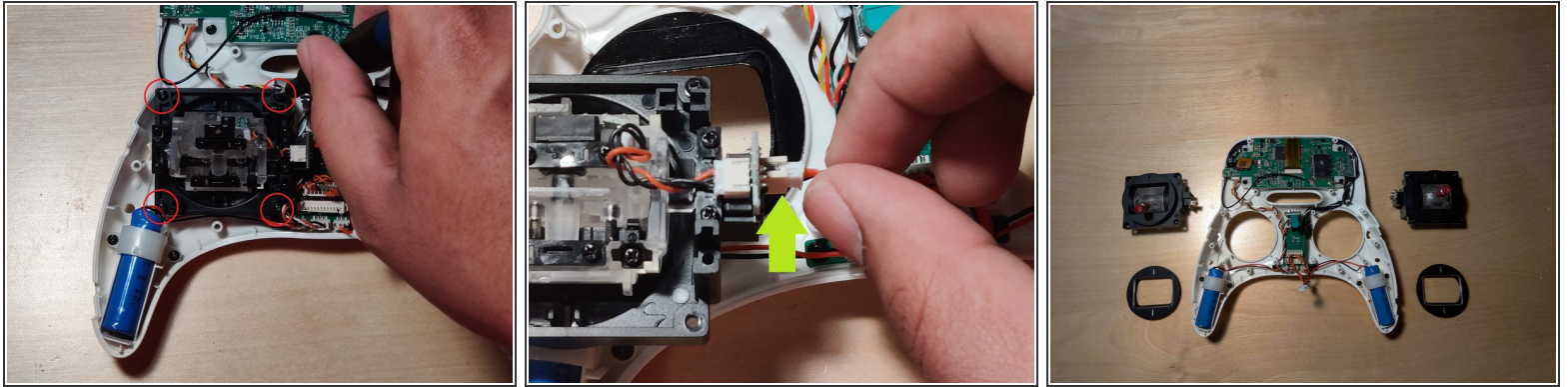
- Split the case into its two halves, taking care to not strain the cable connecting them.
- Disconnect the cable connecting the back switches and LEDs from the rest of the radio.

Step 5 — Throttle Gimbal Removal



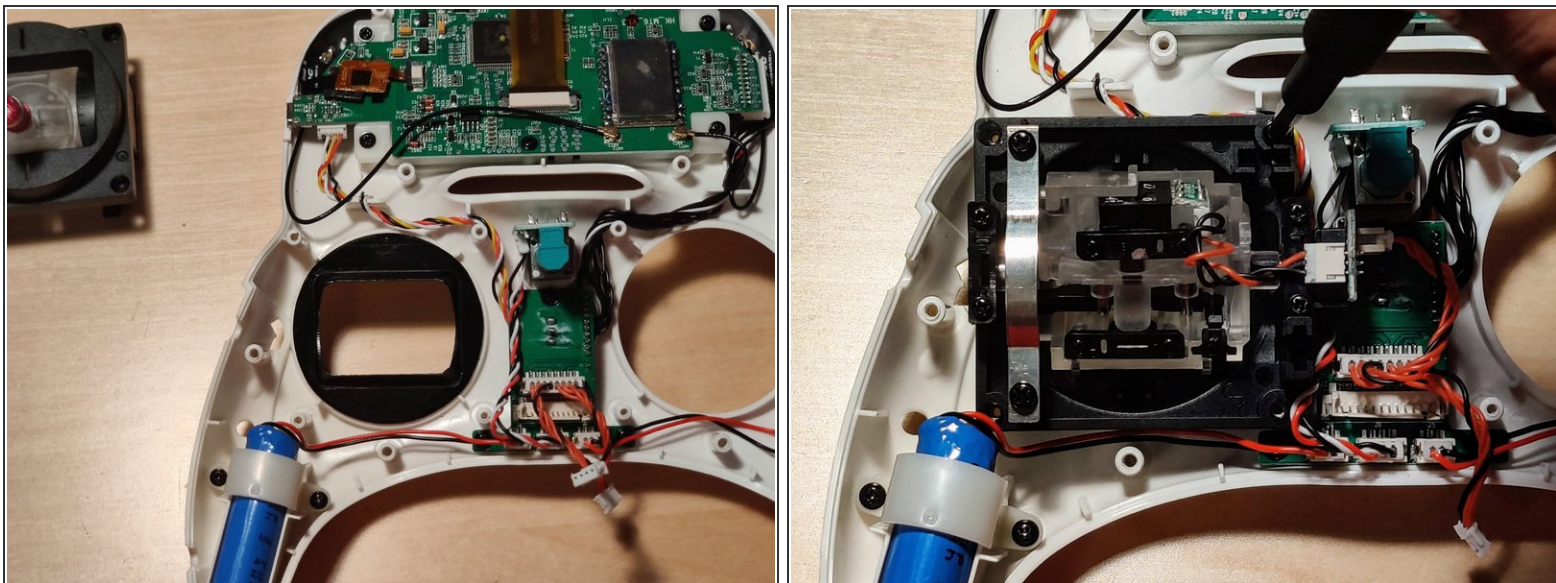
- Remove the 4 screws mounting the gimbal on the right using a #1 Phillips head screwdriver.
**Note that these screws are smaller than the back case screws removed previously
- Disconnect the cable shown from the rest of the gimbal assembly
- Remove the metal insert, and set the assembly aside, noting that this is the throttle gimbal.

Step 6 — Removing Pitch Gimbal



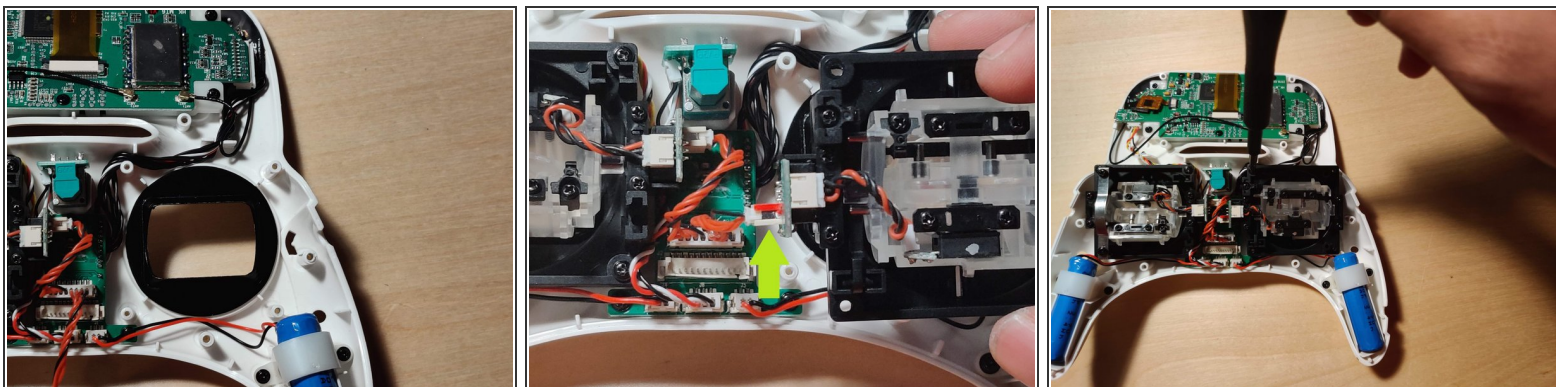
- Remove the same 4 screws from the gimbal on the left with a #1 Phillips head screwdriver.
- Disconnect the cable shown from the rest of the gimbal assembly.
- Remove the other metal insert, and set the assembly aside, noting that this is the pitch gimbal.
- You should now have two sets of gimbals and metal inserts, along with the rest of the radio.

Step 7 — Reassembling Throttle Gimbal



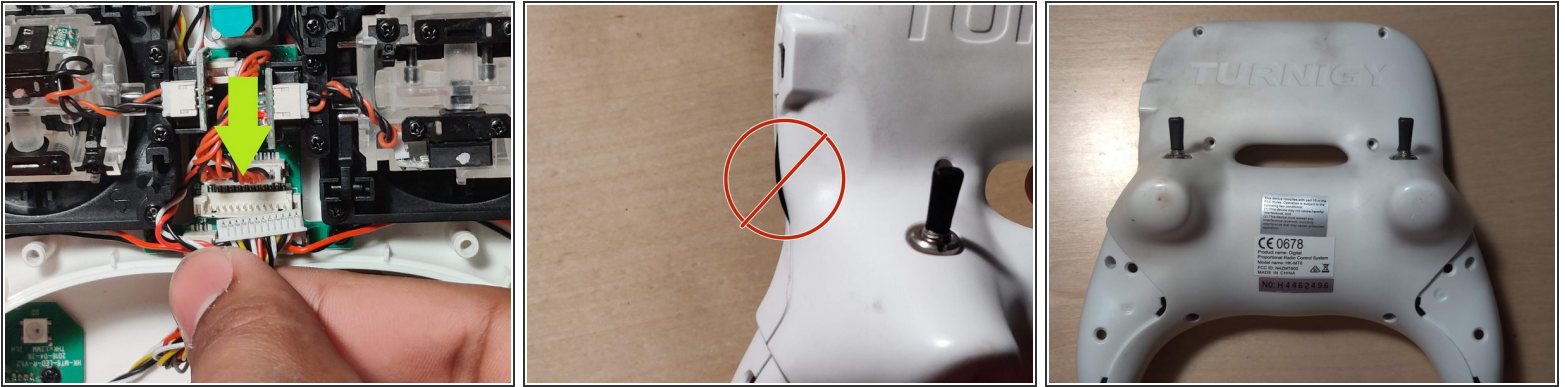
- Align the metal insert with the plastic tabs on the inside of the case's left hole, as shown.
- Connect the throttle gimbal to the cable on the left side of the radio.
- Mount the throttle gimbal into the metal insert, using 4 of the smaller screws you removed in steps 5 & 6.

Step 8



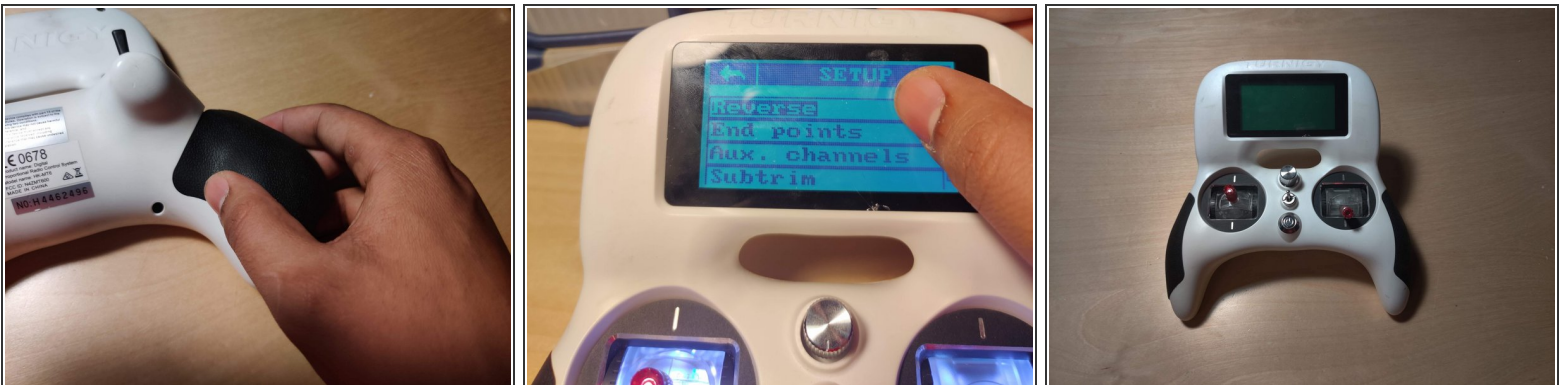
- Align the metal insert with the plastic tabs on the inside of the case's right hole, as shown.
- Connect the pitch gimbal to the cable on the right side of the radio, as shown.
- Mount the pitch gimbal to the remaining hole, using the last 4 smaller screws.

Step 9



- Reconnect the cable from the other half of the case, making sure the connector is the right way around and securely seated.
- Close the case back up, and check around the seam to ensure no cables are being pinched like the one shown.
- Use a #1 Phillips head screwdriver to replace the 8 case screws on the back of the radio.

Step 10



- Reattach the black grips, starting from the back corner, ensuring all the rubber pegs and tabs are properly seated.
- Go into your radio's firmware and reverse the first 4 channels accordingly so the radio operates normally.
- Your Turnigy Evolution's hardware has now successfully been converted from Mode 2 to Mode 1.

Before flying, ensure that all 4 stick channels are responding properly within the radio's firmware!