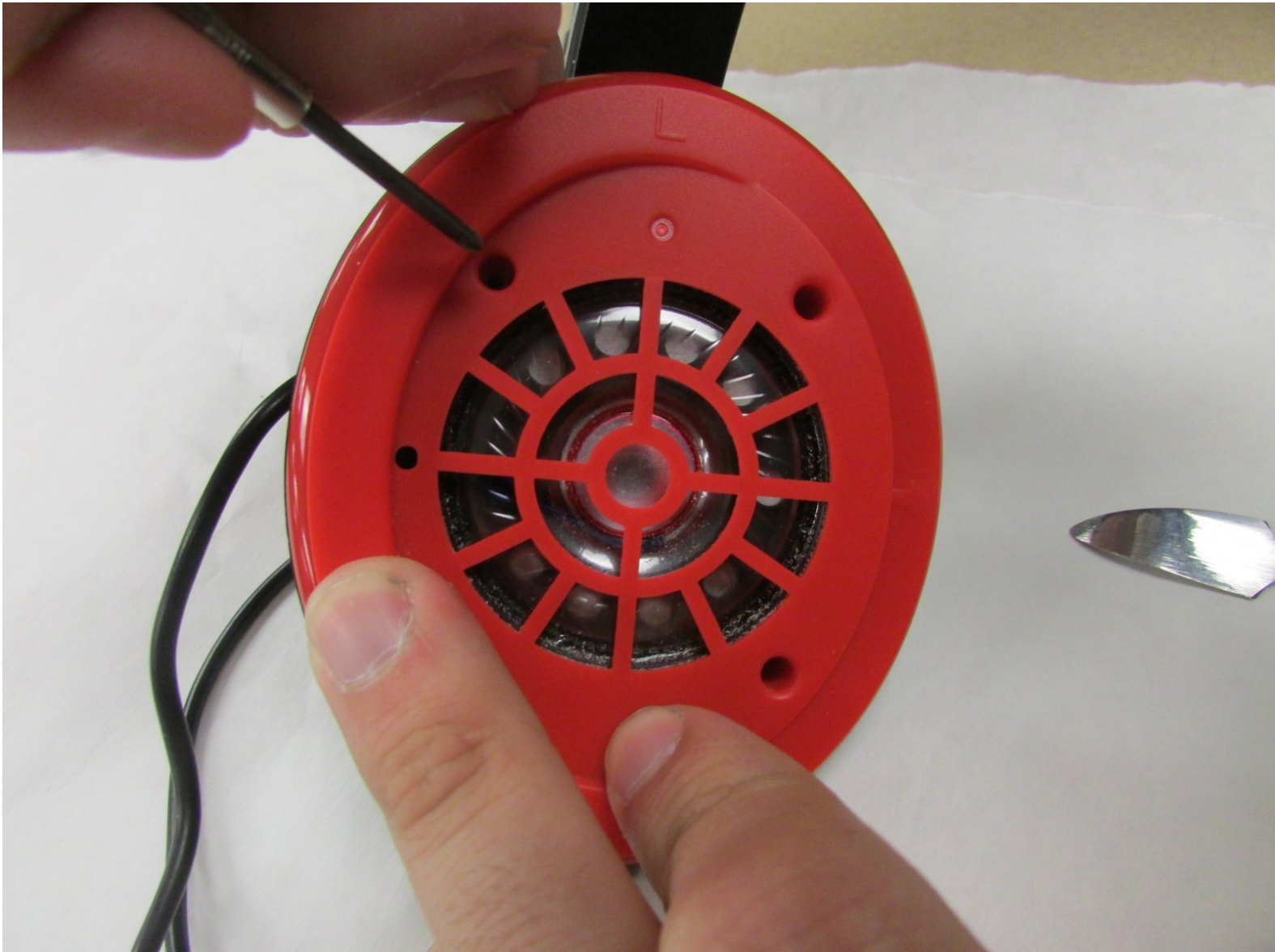




Turtle Beach Ear Force P11 Speakers Replacement

The Turtle Beach P11 has a pair of 50 mm speakers on each side which might need replacement.

Written By: Bhavesh Gandhi



INTRODUCTION

The Turtle Beach P11 headset is equipped with two 50 mm diameter speakers with a frequency response between 20 Hz to 20 kHz which is same as the audible frequency range of the human ear. They have a bass boost fixed at +6 dB range at 50 Hz. There could be problems with the speaker such as inaudibility, crackling voice, distorted sounds etc. which cannot be fixed by suggested technical methods and thus require replacement of the speakers.



TOOLS:

- [Soldering Iron](#) (1)
 - [Phillips #000 Screwdriver](#) (1)
-

Step 1 — Ear Cushion



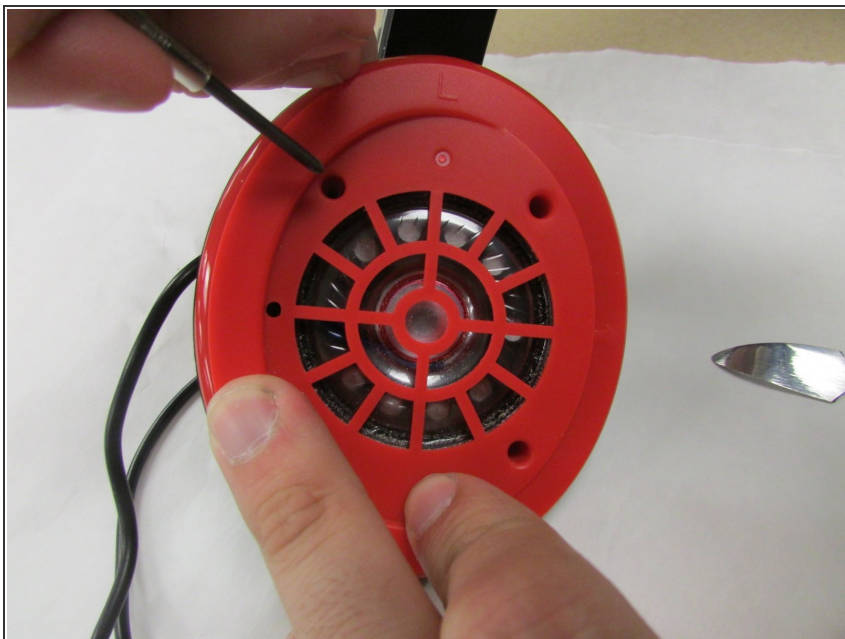
- Pinch the inner edge of the ear cushion from the bottom.

Step 2



- Now slowly pull down the ear cushion as it completely separates from the speaker.
- ⓘ Carry out the pulling down action as slowly as possible or you might risk tearing the ear cushion otherwise

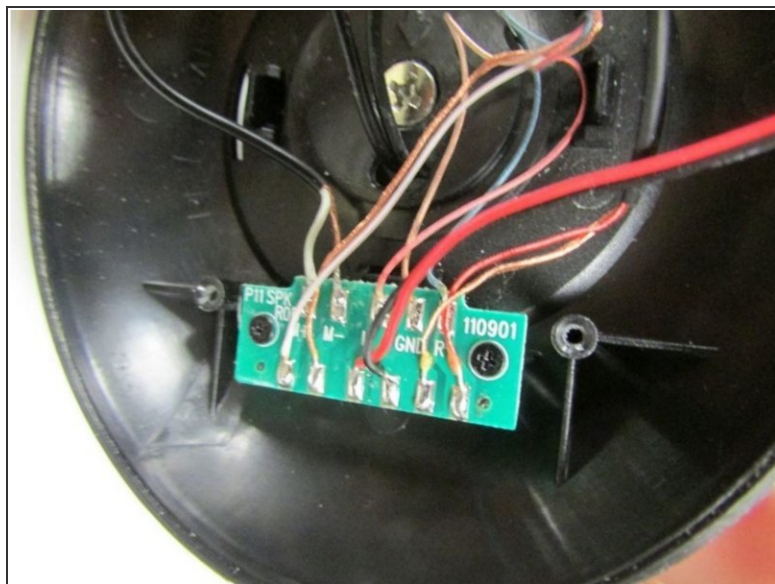
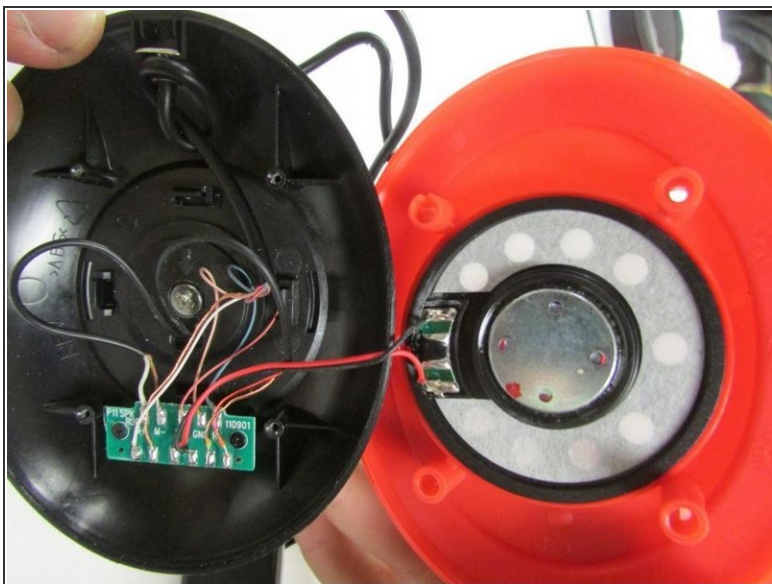
Step 3 — Speakers



- Remove the 4 screws on the red speaker cover.

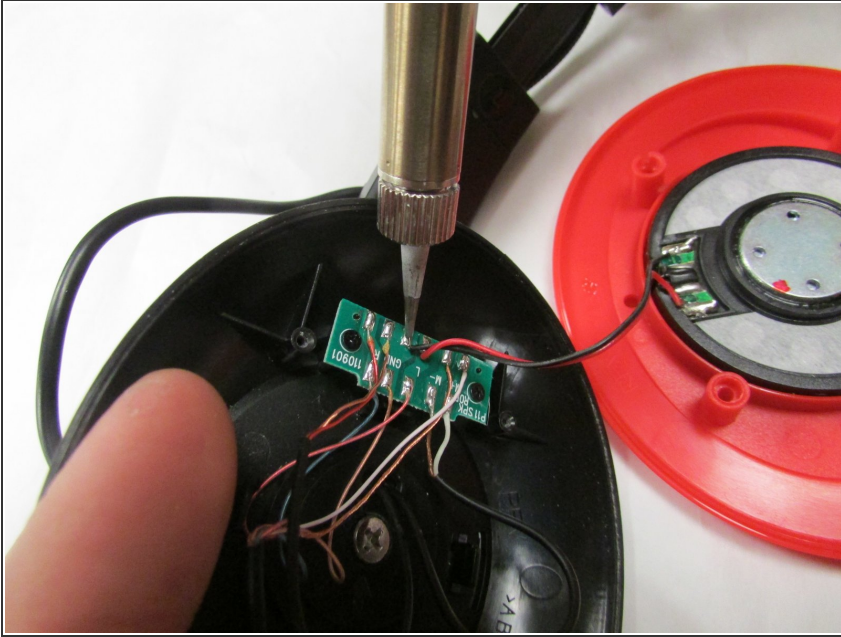
ⓘ It is recommended to use a #000 Philips Screw Driver

Step 4



- Inspect the wires for damage as illustrated

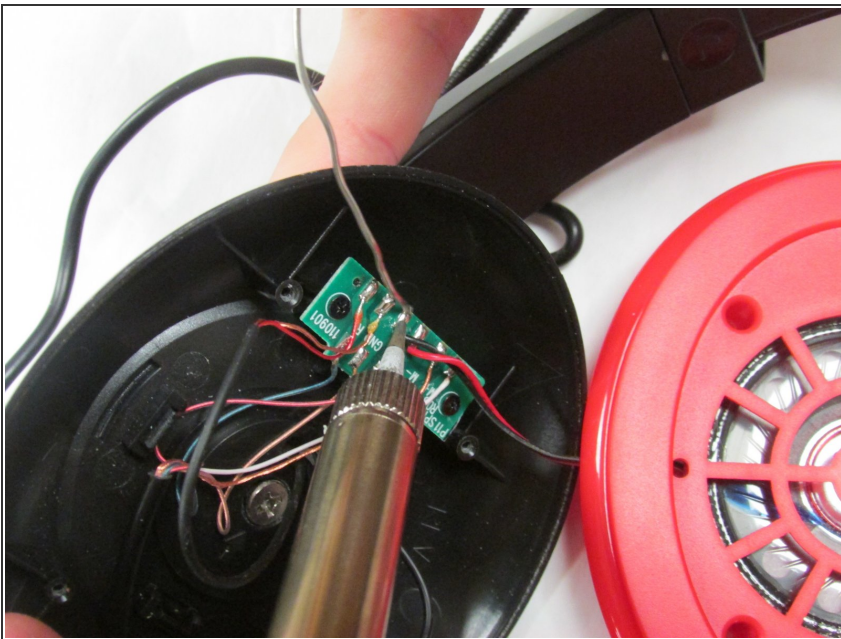
Step 5



- De-solder the speaker wires and remove the speaker.

⚠ Use low heat for de - soldering

Step 6



- Solder the new speaker wires in the same position as the old one.

☑ It is advisable to use a lead free solder

ⓘ Use a small amount of solder to not mix up the connections and prevent short circuiting.

ⓘ In case you use a large amount of solder, use a solder wick to absorb the excess solder.

ⓘ You can find more information on "How To Solder" here: [How To Solder and Desolder Connections](#)

To reassemble your device, follow these instructions in reverse order.