



# Turtle Beach Ear Force X12 Speaker Cone Replacement

Replacement guide for Turtle Beach Ear Force X12's speaker cone.

Written By: Victoria Carlos



## INTRODUCTION

*This is a replacement guide for Turtle Beach Ear Force X12's speaker cone.*




### TOOLS:

- [Soldering Iron](#) (1)
  - [T3 Torx Screwdriver](#) (1)
-

## Step 1 — Speaker Cone



- Gently pull on the pad from the side by the leathery material until it comes loose from slot.

 *Be careful not to rip the fabric.*

## Step 2



- Carefully pull on cushion until it is separated from plastic.

 *The speaker cone is shown like the second image.*

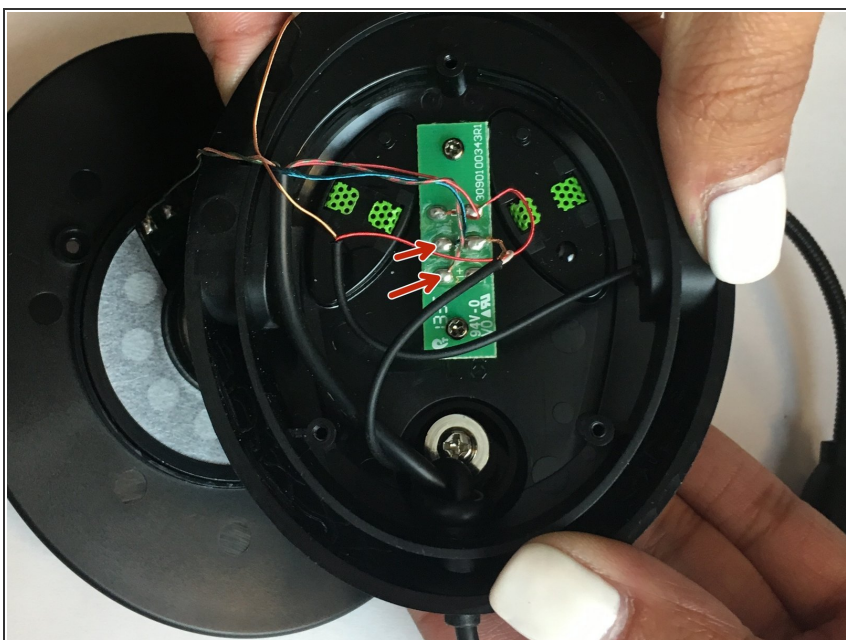




### Step 3



- Unscrew the 1.10 screws with T3 size screws that hold the front plate.

### Step 4



-  Inspect the wires for damage.
-  [Desolder](#) indicated wires.
- Replace the speaker core by soldering the new cables, and then reassemble the headset.

To reassemble your device, follow these instructions in reverse order.