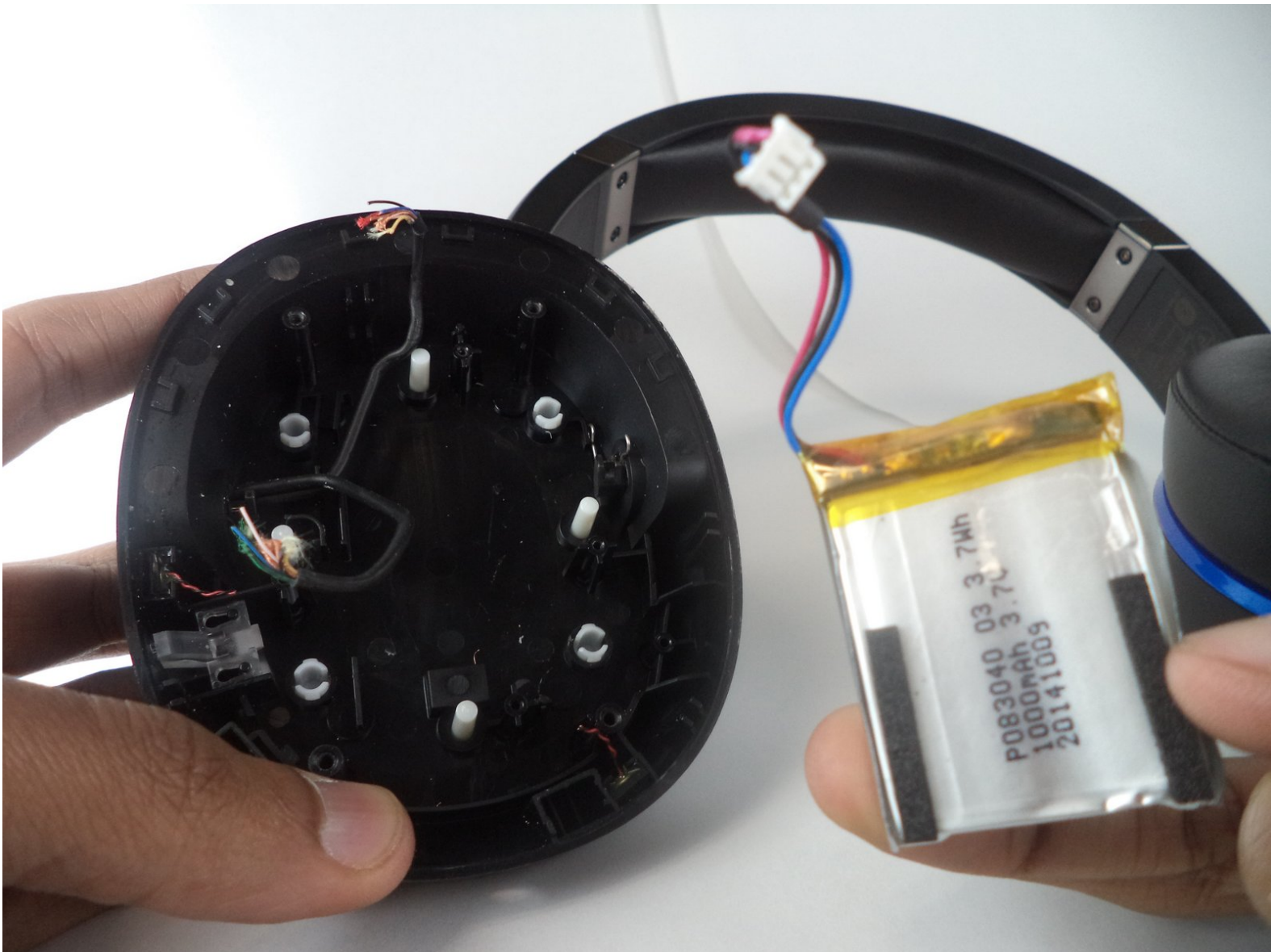




Turtle Beach Elite 800 Battery Replacement

Replacing the internal headset battery.

Written By: Johnny Lofton





TOOLS:

- [Phillips #0 Screwdriver](#) (1)
 - [Soldering Iron](#) (1)
-

Step 1 — Ear Cushion



- Remove previous ear cushion by rotating the clockwise and pulling it off.

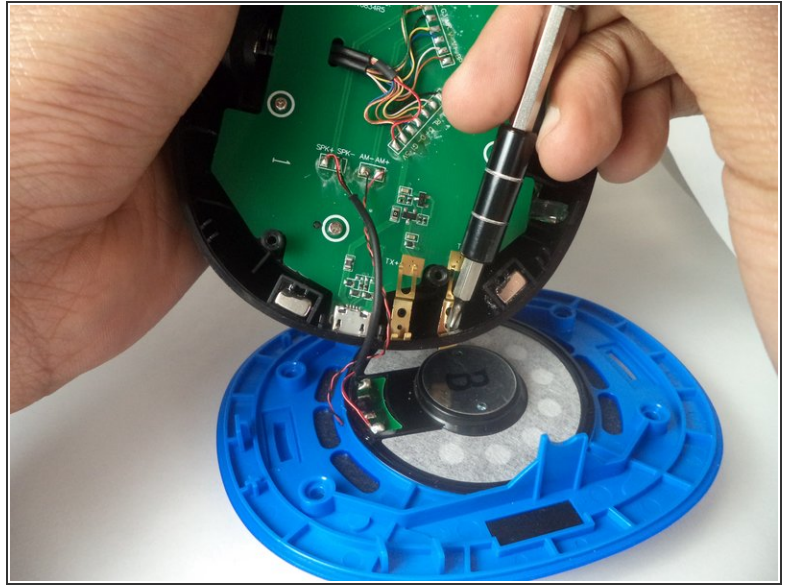
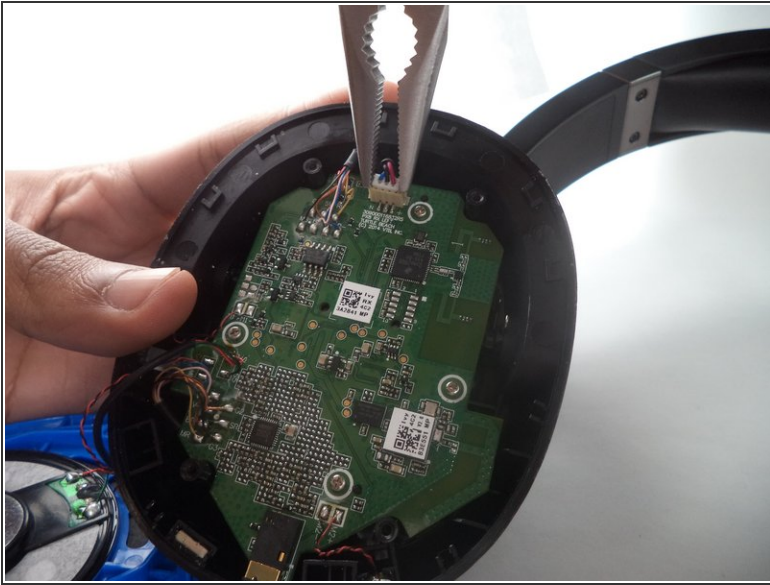
i When reassembling, be sure to line up the locking plates.

Step 2 — Audio Board



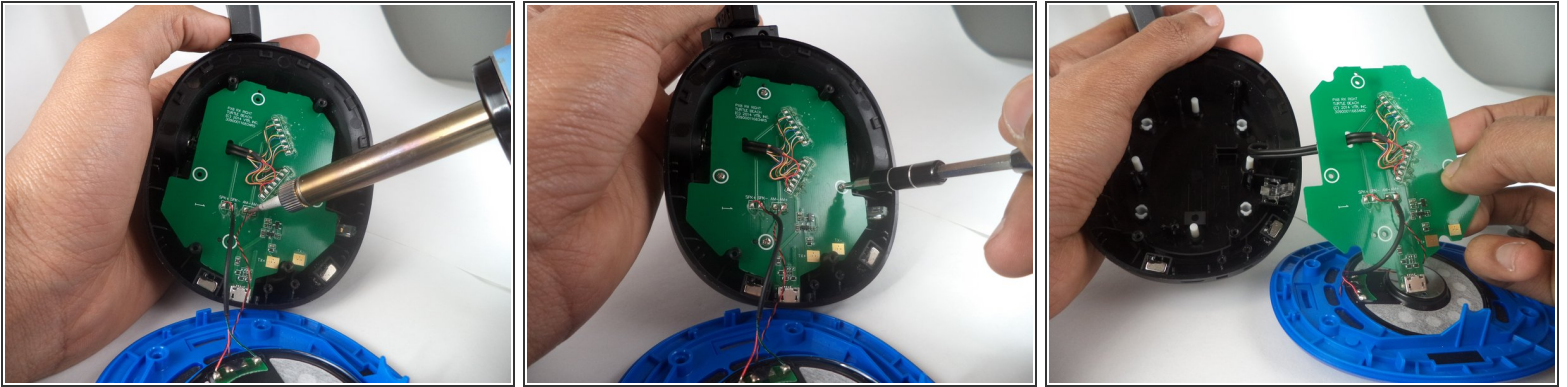
- Remove the screws (9.47 mm Phillips head) from the blue plating on the headset to reveal the inside.

Step 3




- If you are working on the LEFT side ear, you will first have to detach the battery by gently unplugging the white plug on the top of the board.
- ⚠ Make sure when unplugging the battery to not pull the manilla colored part which is attached to the board, but the white plug instead.
- If you are working on the RIGHT side ear, you will first have to remove the charging contacts (2 7.92 mm Phillips screws).

Step 4



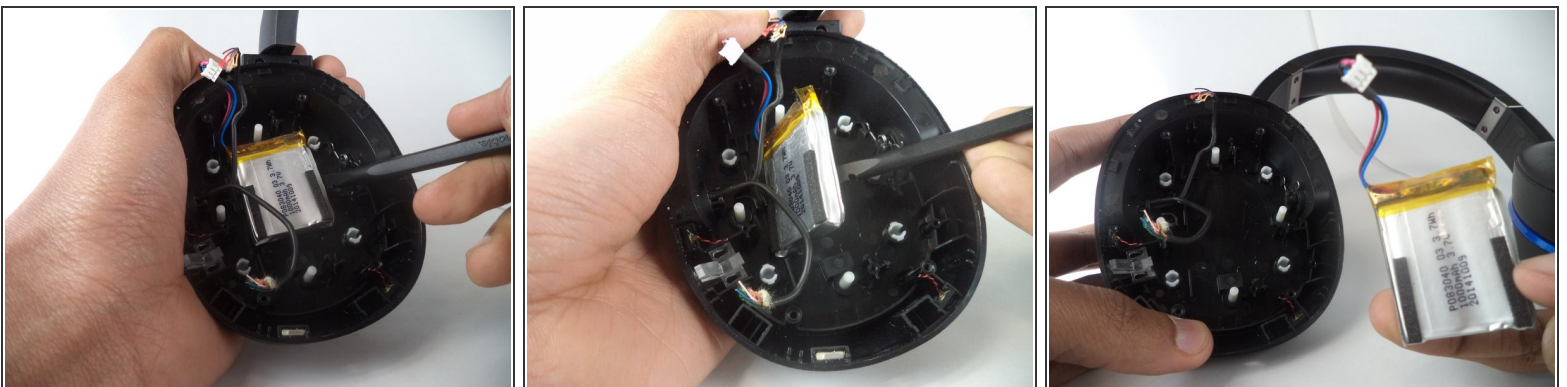
- Desolder the necessary wires. (Each side will be slightly different.)

 Be careful when using a soldering iron. Refer to the [desoldering guide](#) for tips.

 For the purpose of this guide we clipped the wires connected to the board.

- Remove the 4 screws (7.71mm Phillips head) using the #0 screw bit, that are holding the board in place.
- Finally, remove the audio board.

Step 5 — Battery



- Remove the battery by carefully prying it from the headset.

To reassemble your device, follow these instructions in reverse order.