



Turtle Beach Elite Pro Left Speaker Replacement

The purpose of this guide will be to aid user in repairing their left speaker.

Written By: Alexis Uribe



INTRODUCTION

This guide will assist users in repairing the left speaker. It will help users repair a left speaker that is either producing no sound or inaudible sound.



TOOLS:

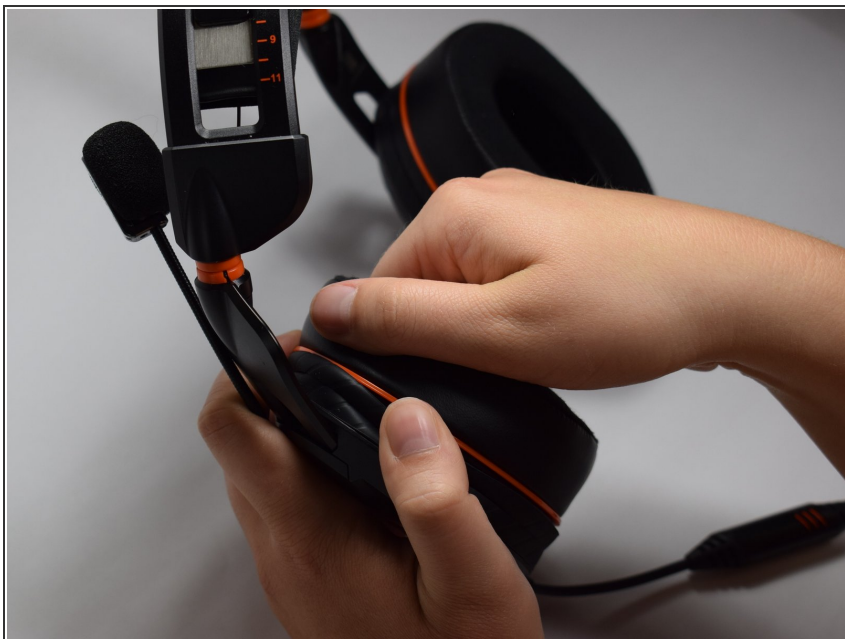
- [iFixit Opening Tools](#) (1)
- [Flush Wire Cutters](#) (1)
- [Phillips #0 Screwdriver](#) (1)
- [Soldering Iron](#) (1)



PARTS:

- [Speaker](#) (1)

Step 1 — Ear Cushions



- Firmly pinch ear cushion between thumb and forefinger.
- Using the hand not holding the ear cushion, grasp the orange plate that is below the ear cushion.

⚠ If the black rubber lining on the orange plate is grasped, then the rubber lining on the ear piece may tear.

Step 2



- Rotate ear cushion counter-clockwise about half an inch.
- ⓘ The ear cushion should audibly snap out of place.
- After it has audibly snapped out of place, lift the ear cushion off of the device.
- ✦ During reassembly, rotate the ear cushion clockwise.

Step 3



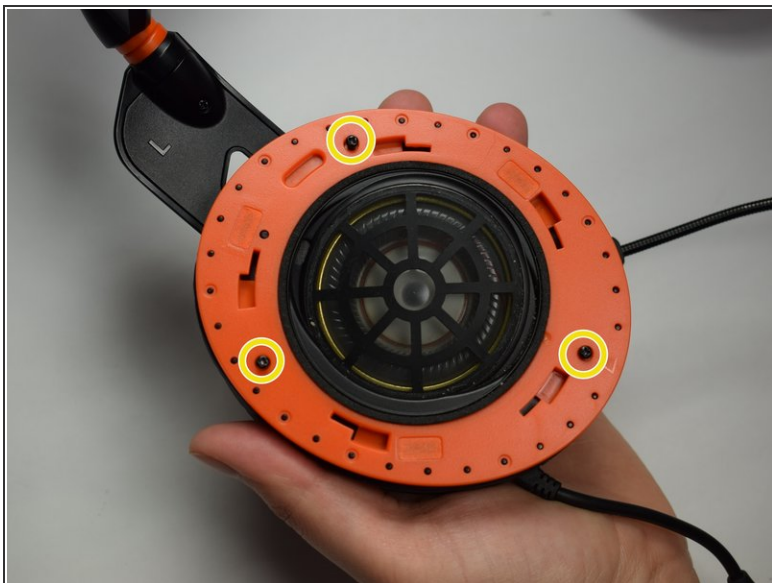
- Using the new cushion, align the pegs located on both the orange plate and ear cushion.
- ☑ Make sure that both the ear cushion and the orange plate have the same designation.
- Once the pegs are aligned, push the new ear cushion in place.

Step 4 — Left Speaker



- Remove the left ear cushion completely from the headset.
- ⓘ The left ear cushion will be on the side of the headset where the microphone and audio control is attached.

Step 5



- Using the Phillips #0 screwdriver, remove the 6.0 mm screws on the orange plate.

Step 6



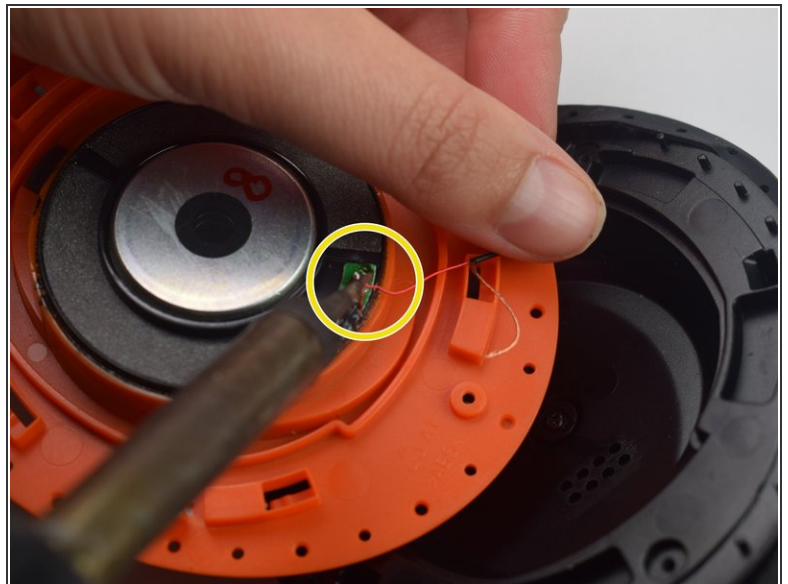
- Use the opening tool to separate the orange plate from the black base plate.
- Focus on the wires that are connected to the speaker.

Step 7



- Using wire cutters, cut the two wires that are attached to the speaker.
- ⓘ Make sure to cut the wires as close to the speaker as possible, because these wires will be used in the next step.

Step 8



- Replace the old speaker with the new speaker.
- Using the soldering iron, solder the wires to the new speaker.
- ⓘ Make sure to solder the wires to their original locations on the speaker.

To reassemble your device, follow these instructions in reverse order.