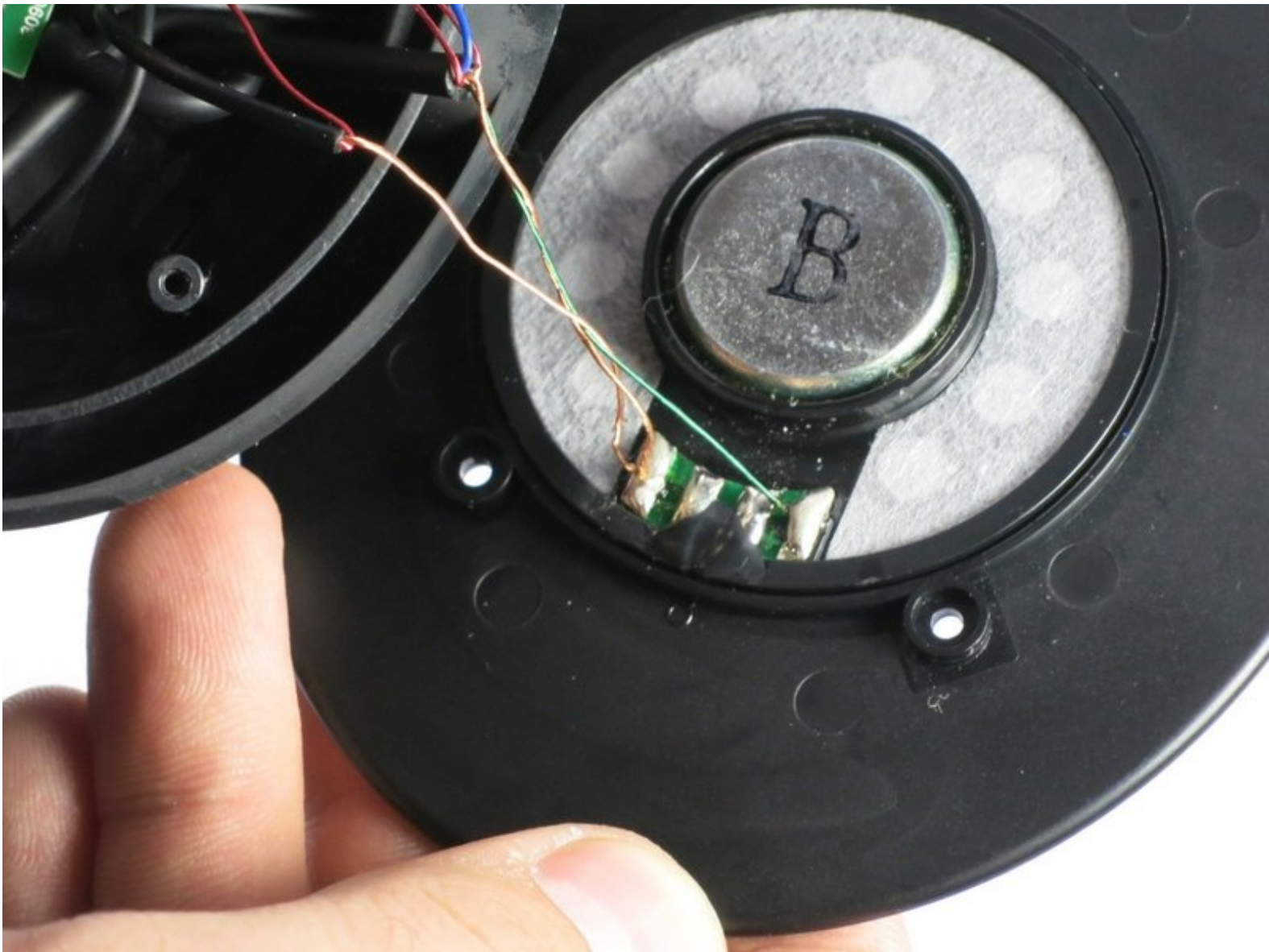




Turtle Beach PX22 Speaker Replacement

How to replace a Turtle Beach PX22 speaker.

Written By: James de Iturrondo



INTRODUCTION

This guide shows how to replace an ineffective or broken speaker in a Turtle Beach PX22 headset. Soldering skills are needed for this job.



TOOLS:

- [Phillips #00 Screwdriver](#) (1)
- [Soldering Iron](#) (1)



PARTS:

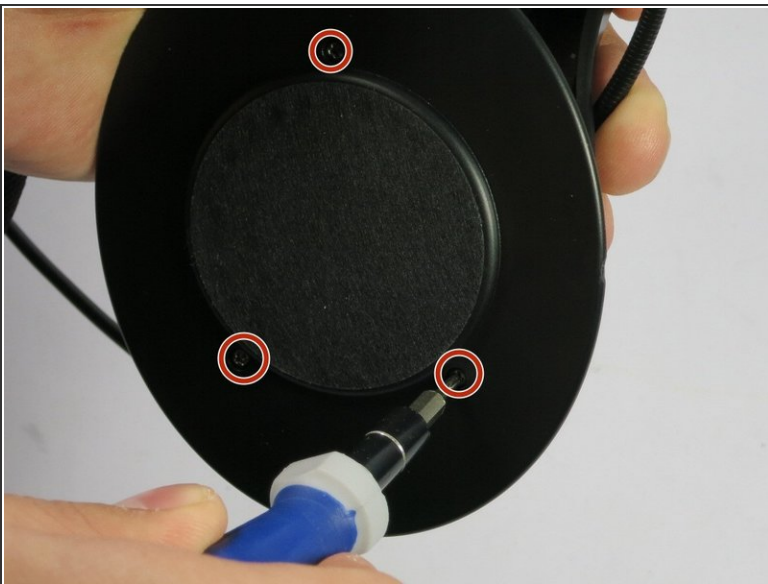
- [Replacement speaker](#) (1)

Step 1 — Speaker



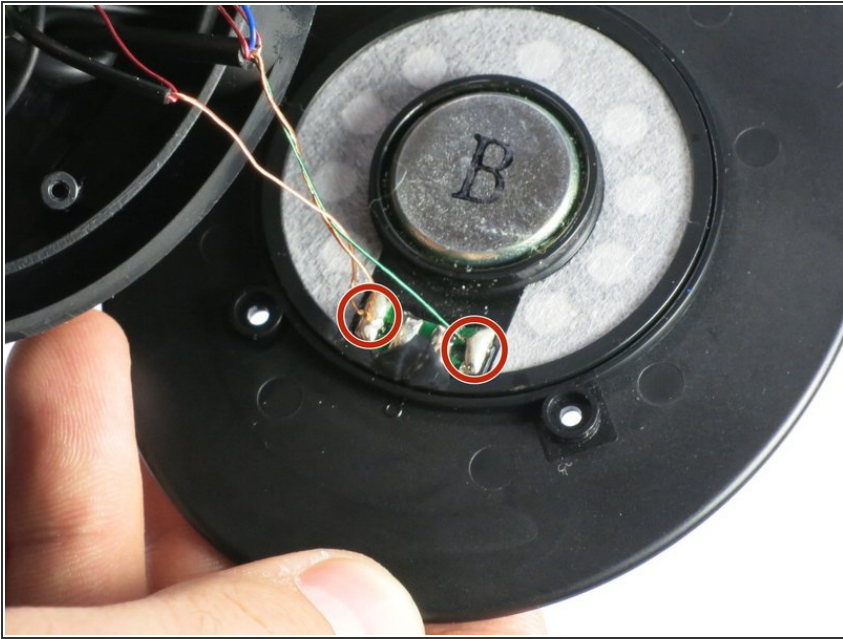
- Use your fingers to peel off ear cushion by pinching and pulling off the leather.

Step 2



- Use a Phillips #00 head screwdriver to remove the three screws located around the speaker (9/32 in length, 1/8 inch head).
- The housing will come loose. Take note of the position of the wires connected to the speaker.

Step 3



- Desolder the colored wire and copper wires.