



Twentieth Anniversary Mac Teardown

Teardown of TAM to remove the Logic Board.

Written By: Dylan

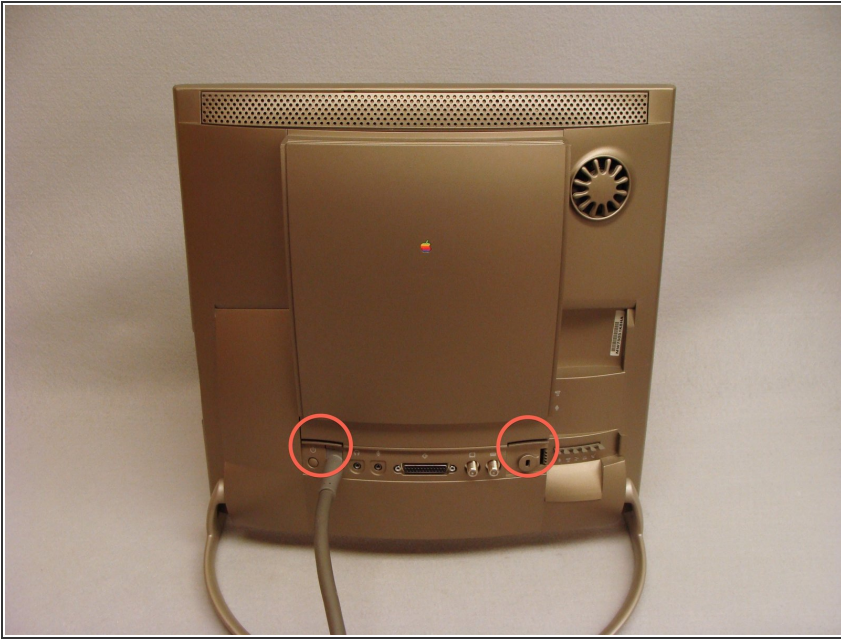




TOOLS:

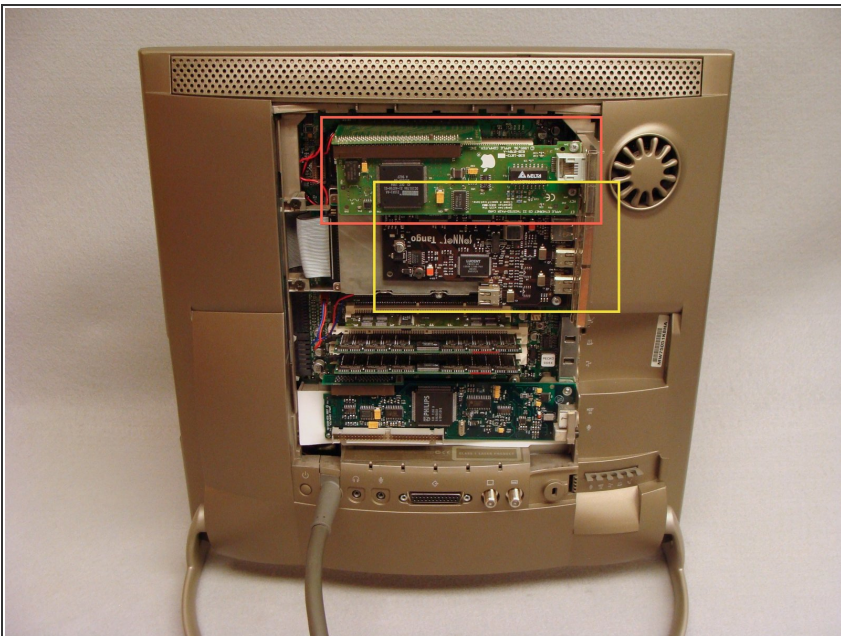
- [Phillips #0 Screwdriver](#) (1)
- [Spudger](#) (1)
- [T6 Torx Screwdriver](#) (1)
- [T8 Torx Screwdriver](#) (1)
- [T10 Torx Screwdriver](#) (1)

Step 1 — Logic Board



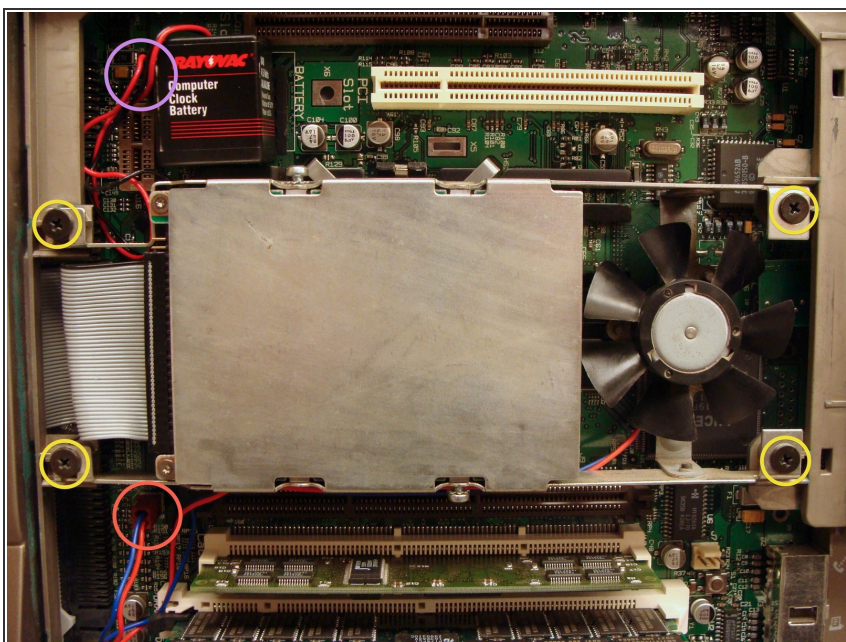
- Use the release tabs to remove the rear cover

Step 2



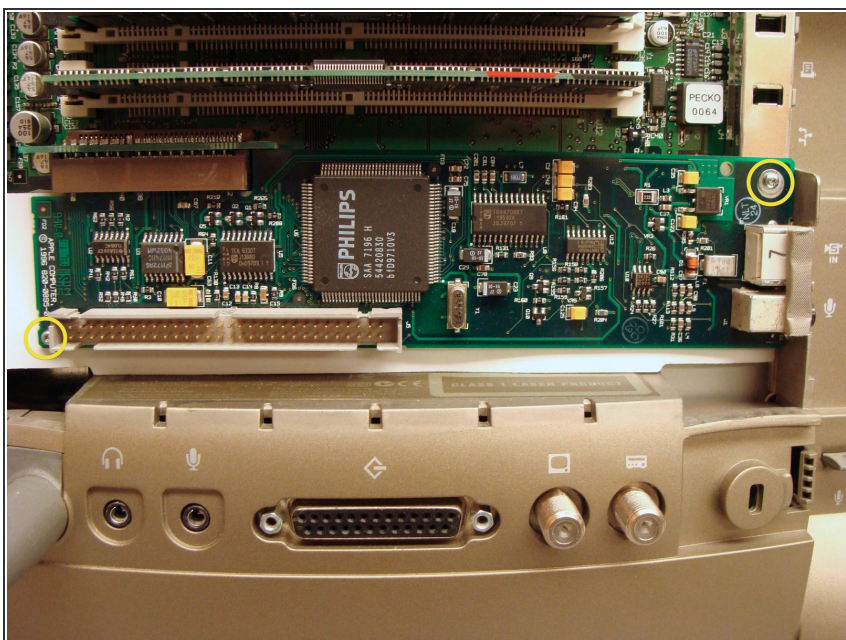
- Remove any ComSlot II or PCI cards that may be installed and their risers.

Step 3



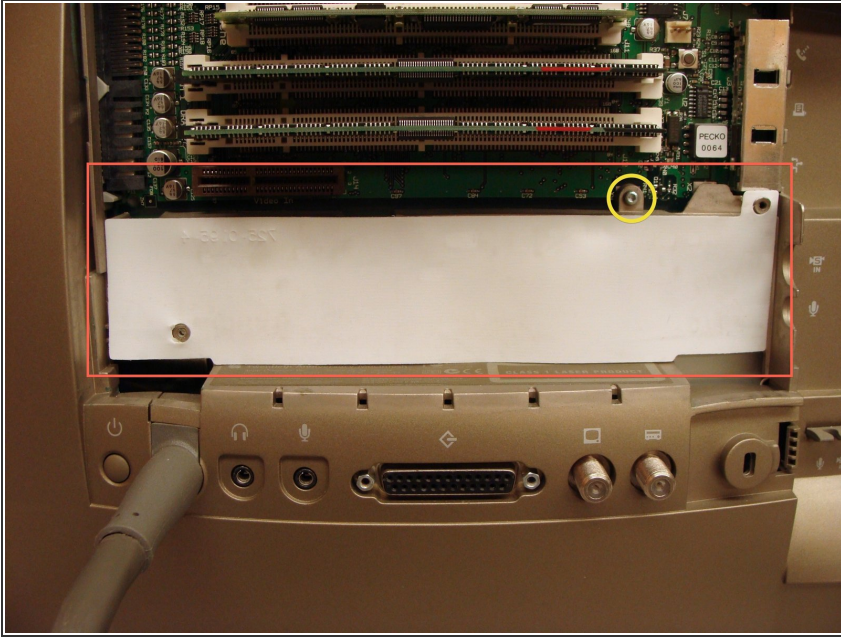
- Unplug the logic board connections to the PRAM battery and fan.
- Remove the PRAM battery from it's Velcro mounting.
- Remove the four #0 Philips screws securing the hard drive and processor fan assembly.
- Remove the hard drive and processor fan assembly.

Step 4



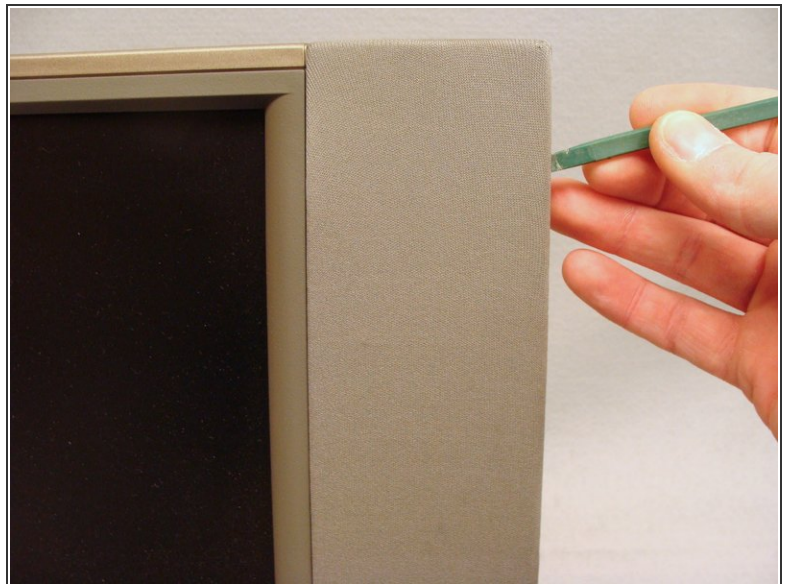
- Remove the two T6 Torx screws securing the A/V input board.
- Remove the A/V Input board

Step 5



- Remove the white plastic shield
- Remove the T6 torx screw securing the logic board to the frame.

Step 6



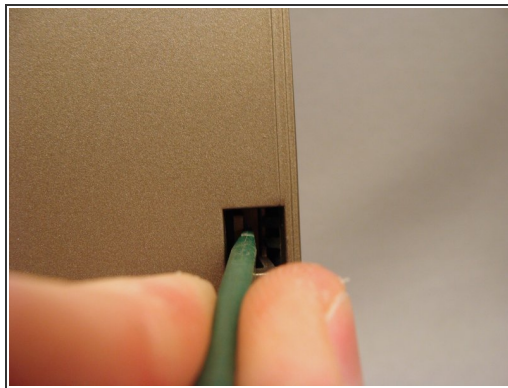
- Turn the TAM around with the front facing you.
- Use a spudger to gently loosen the speaker covers from their press-fit snaps. Remove the speaker covers.

Step 7



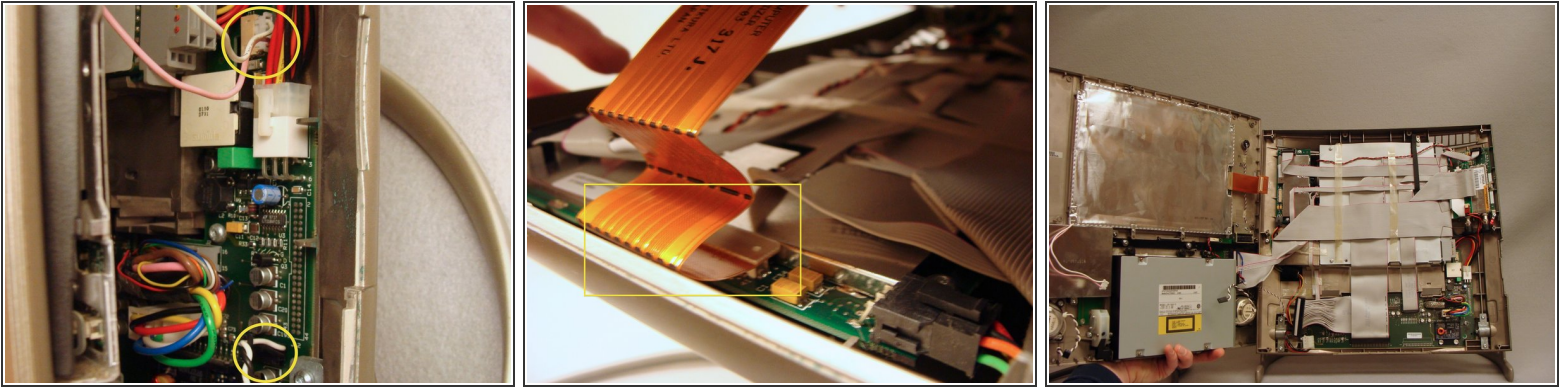
- Remove the six T6 torx screws securing the front case to the rear case.

Step 8



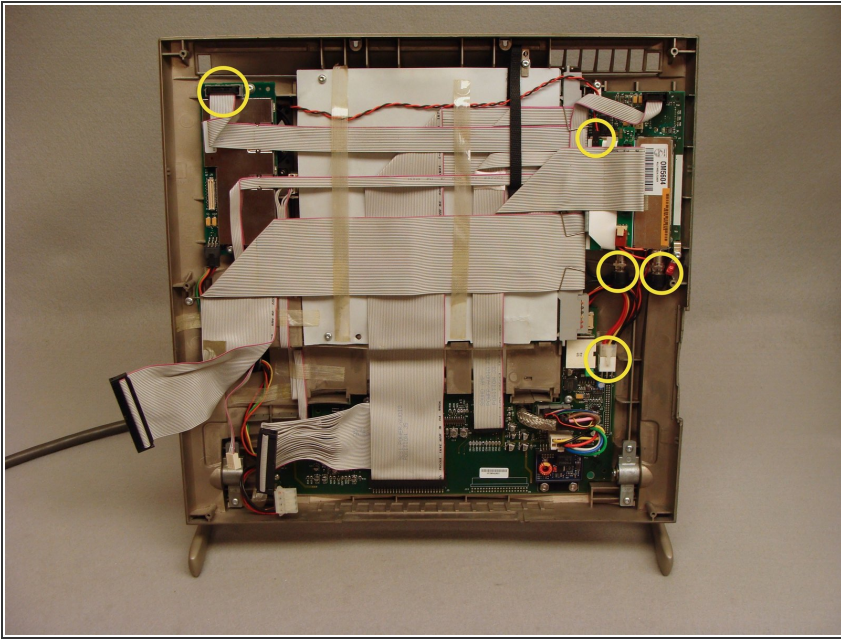
- Gently pull the tabs toward the center to release the latches hold the front and back together. These tabs are fragile but release easily. Use caution.
- Lean the top forward and lift up to pull the front case from it's bottom latches.
- DO NOT TRY TO REMOVE THE FRONT CASE. It is still connected to the back case by several wires and cables.

Step 9



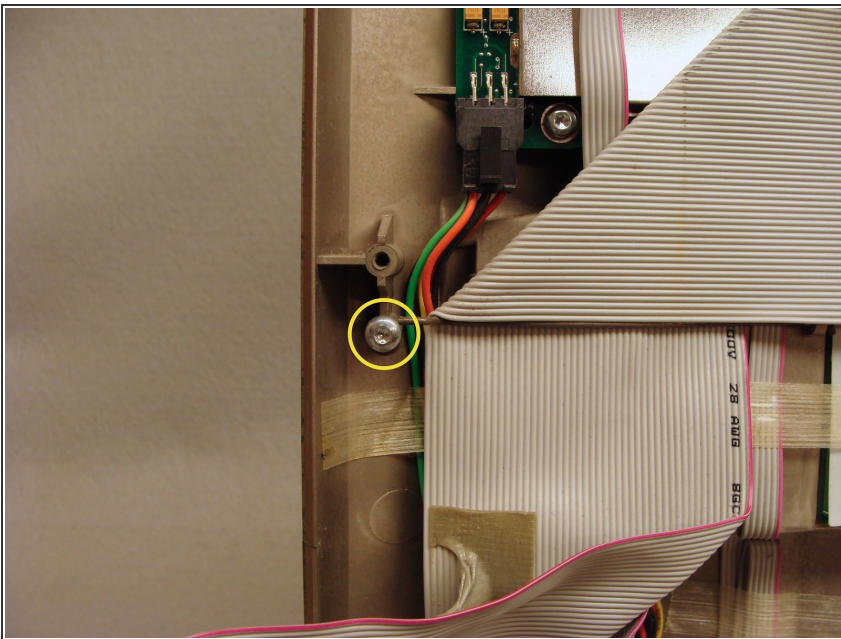
- Disconnect the pink and white backlight inverter cable and the black and white right speaker cable from behind the floppy disk drive on the right side.
- On the left side, disconnect the 50-pin SCSI ribbon cable, analog audio cable and power cable from the CD-ROM drive.
- Disconnect the black and white left speaker cable.
- Disconnect the flat, orange display data cable.
- Open the top case to the left like a book. There will be one more 50-pin cable to disconnect from the front control panel board.

Step 10



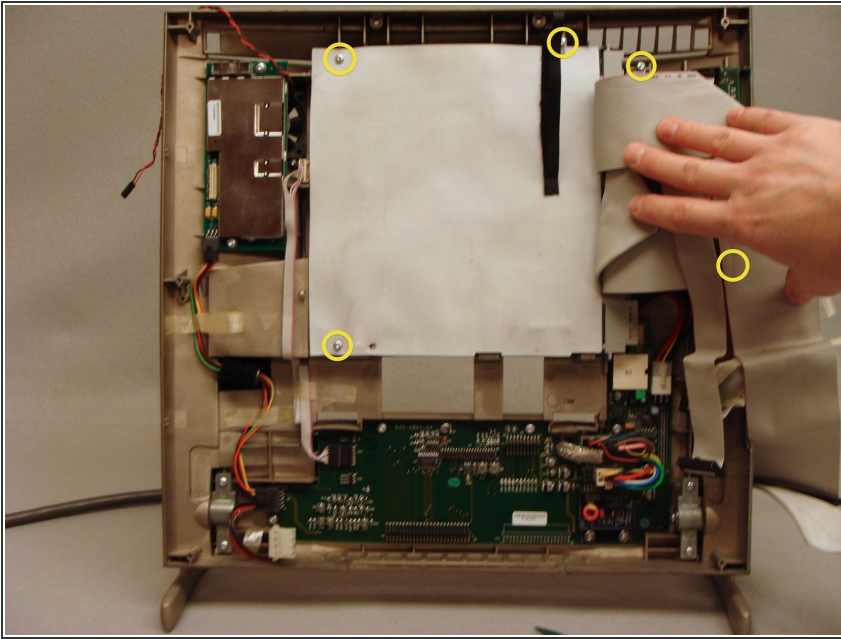
- The easiest method to remove the logic board is to remove it with the tuner card and cabling.
- Disconnect the five cables illustrated.

Step 11



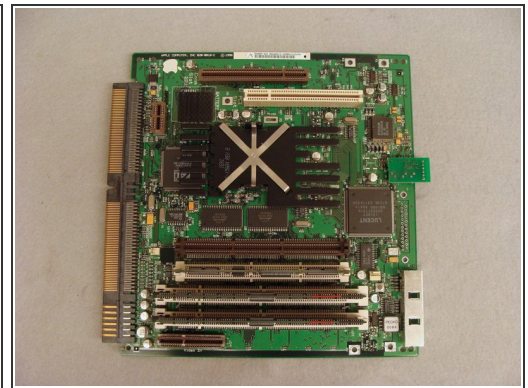
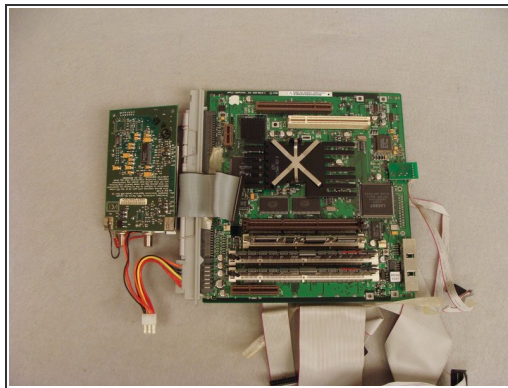
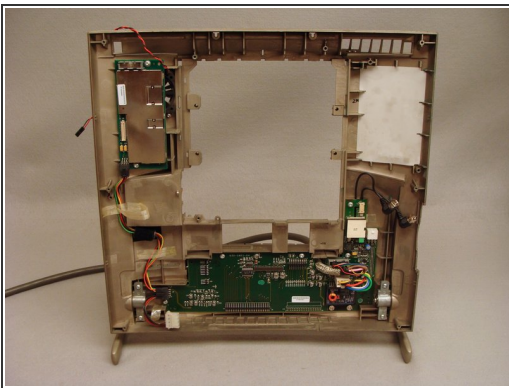
- Remove the T10 torx screw and extract the stiff wire cable brace from the left side

Step 12



- Carefully peel back the tape securing the cables to the white, plastic logic board cover. Pull the cables back to reveal the back side of the logic board.
- Remove the five T10 screws holding the logic and tuner boards to the back case.

Step 13



- Lift the logic board from the left edge then straight up to remove it from the rear case.
- The logic board slides out of the cabling connector.

To reassemble your device, follow these instructions in reverse order.