



# Ubee DVW23C Power Supply Unit Replacement

How to replace the power supply unit in the UBEE DVW32C(B).

Written By: Levi G



**TOOLS:**

- [T10 Torx Screwdriver](#) (1)

**PARTS:**

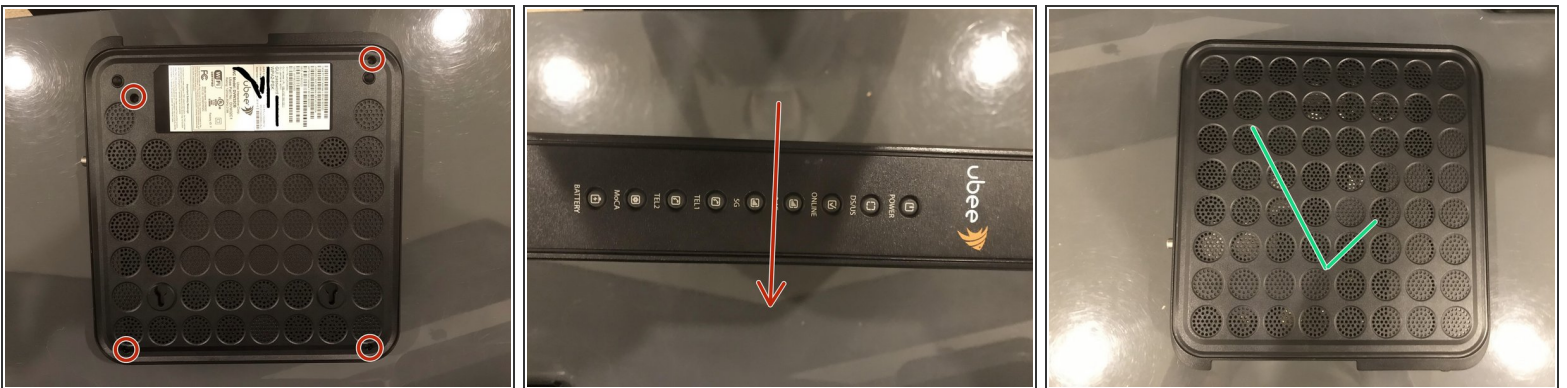
- [N12-035N1A](#) (1)

## Step 1 — Power Supply Unit



- The DVW32C(B) (The B is only present when provided by certain ISPs) is an easily user-serviceable device
- It won't turn on and you want to replace the PSU? This guide will show you how.
- Let's get started. You need a T10 Torx Screwdriver for this guide.

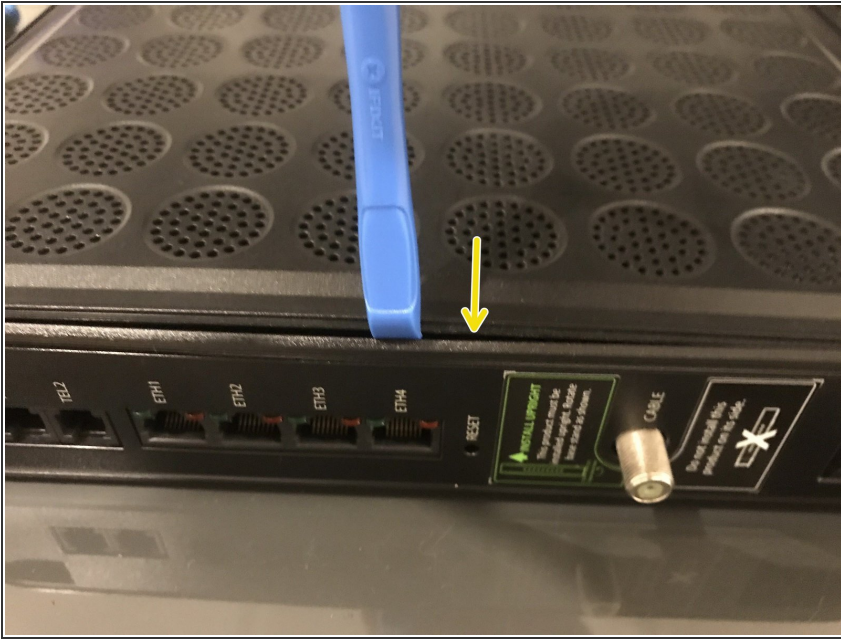
## Step 2



- Unscrew these 4 screws. All screws on this device are T10.
- Then, flip over the device

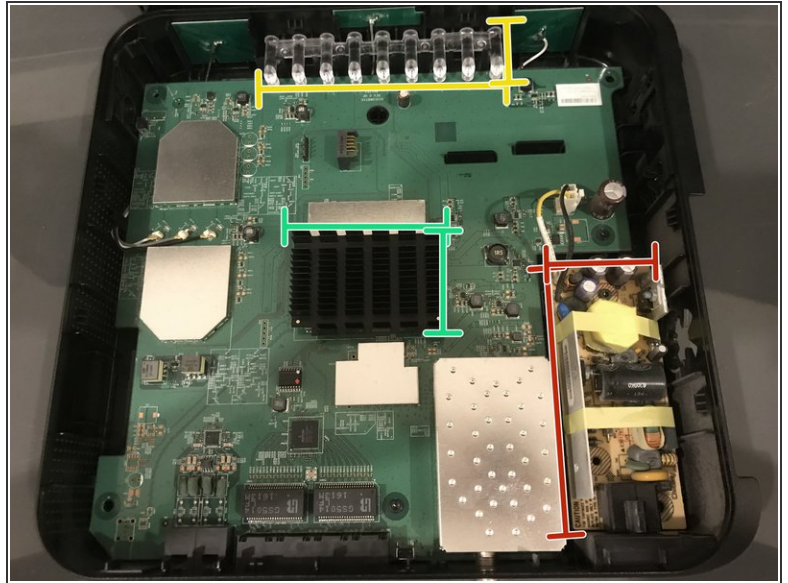
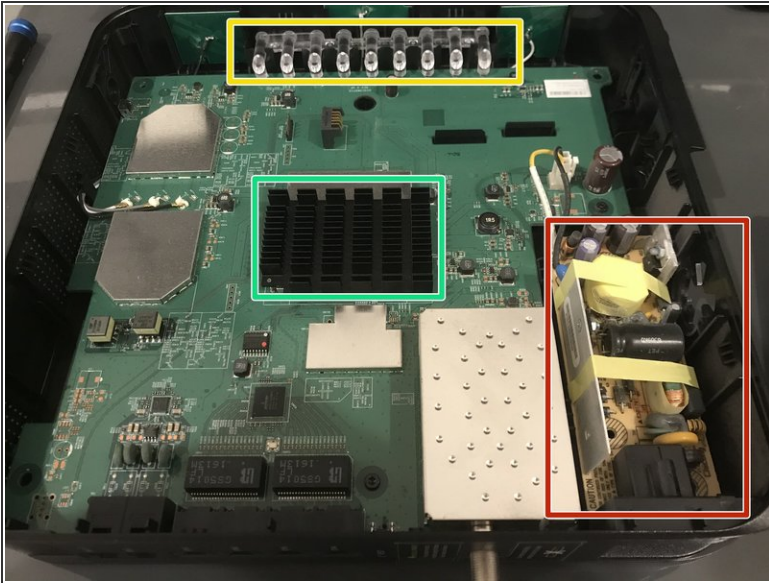


### Step 3



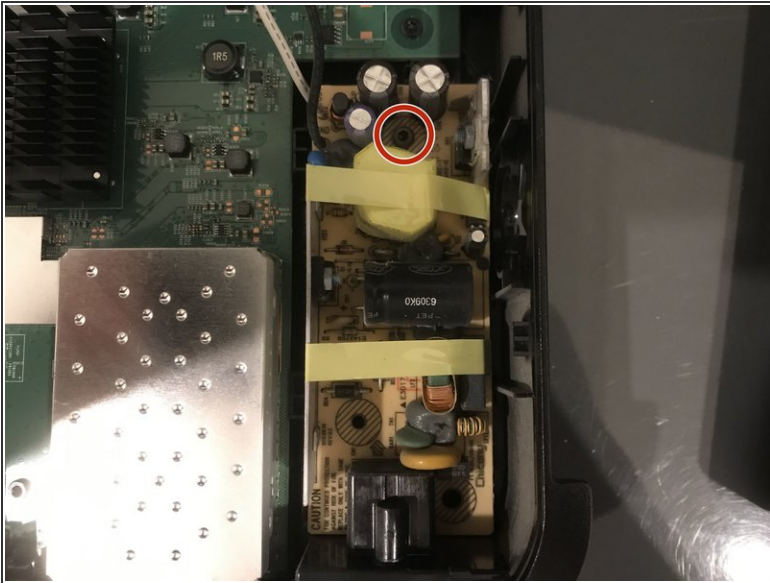
- Take a pry tool and pull the cover off, on the side facing up from the last step. This is the side **without** the label.

## Step 4



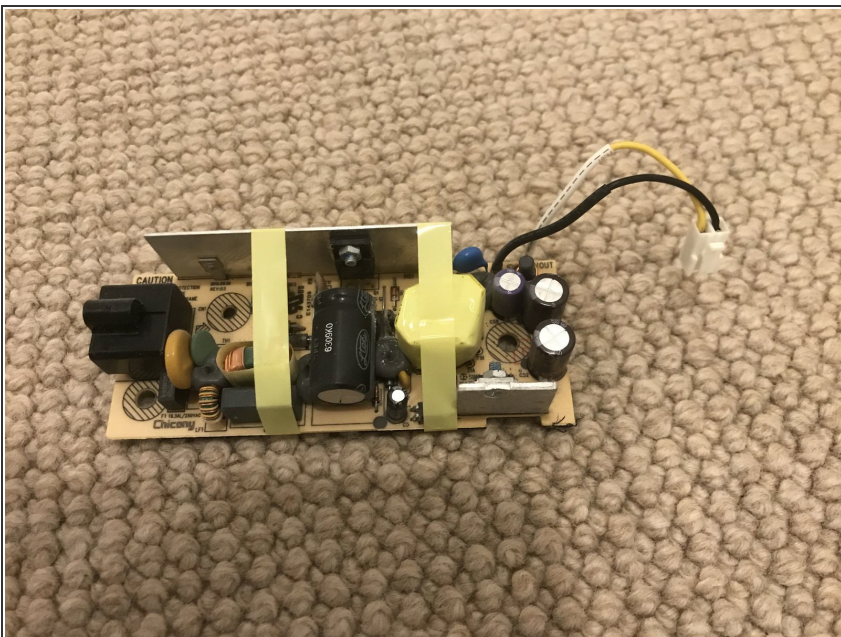
- You can now see inside.
- The PSU is marked in red
- The lights are marked in yellow
- The Broadcom Chip is marked in green

## Step 5



- Unscrew the 2 screws marked in red.
- **WARNING:** The screw by the connector is a different size than the chassis screw. Keep PSU screws and chassis screws separate.
- Disconnect the PSU Cable from the motherboard.

## Step 6



- You can now remove the PSU.
- Great job! Make sure you properly reconnect the cable connecting the motherboard and PSU after replacement.

To reassemble your device, follow these instructions in reverse order, and plug in the PSU into the motherboard.