



Ubee DVW23C Teardown

A teardown of the DVW32C(B)

Written By: Levi G



**TOOLS:**

- [T10 Torx Screwdriver](#) (1)

**PARTS:**

- [N12-035N1A](#) (1)

Step 1 — Ubee DVW23C Teardown



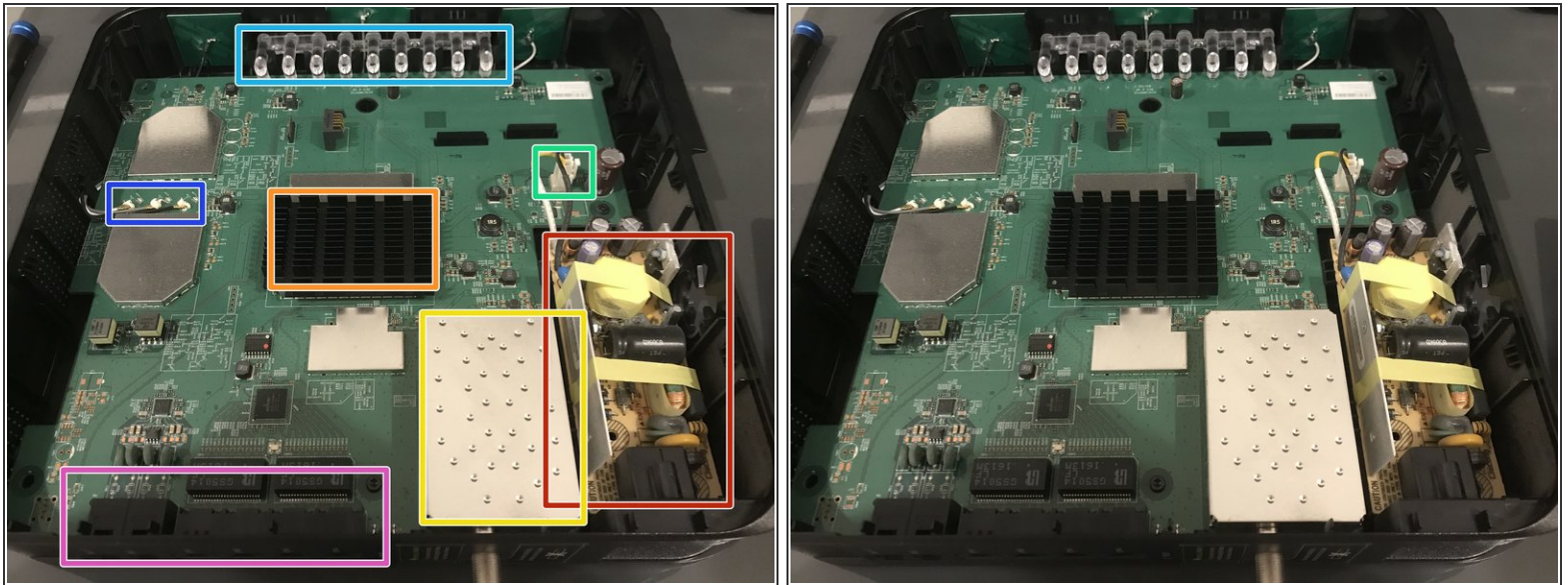
- As we look around the device, the only visible screws are 4 on the back, and one by the power connector.
- All the screws so far are T10 Torx.

Step 2



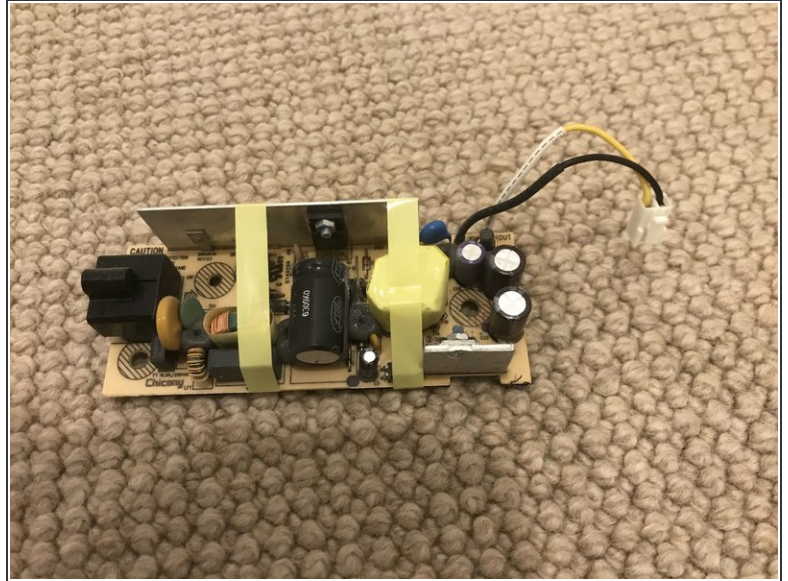
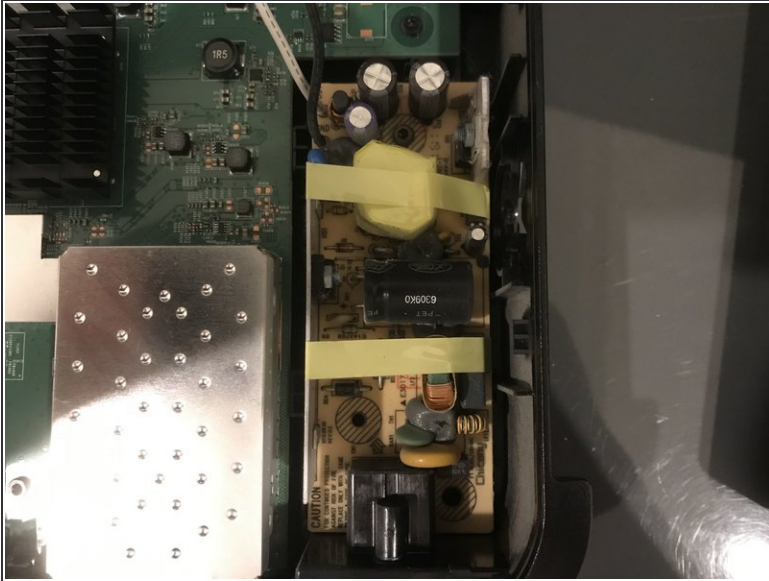
- Prying away the front panel reveals the inside.

Step 3



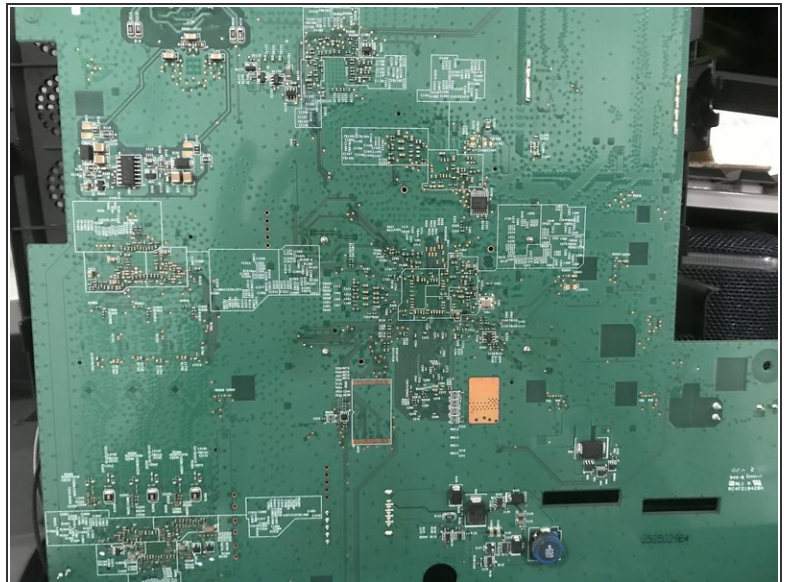
- The PSU is red
- The Broadcom chip is orange.
- The DOCSIS Cable connector is yellow
- The PSU Connector is green
- The Antenna connectors are blue
- The lights and diffusers are light blue
- The ethernet and telephone jacks are magenta

Step 4



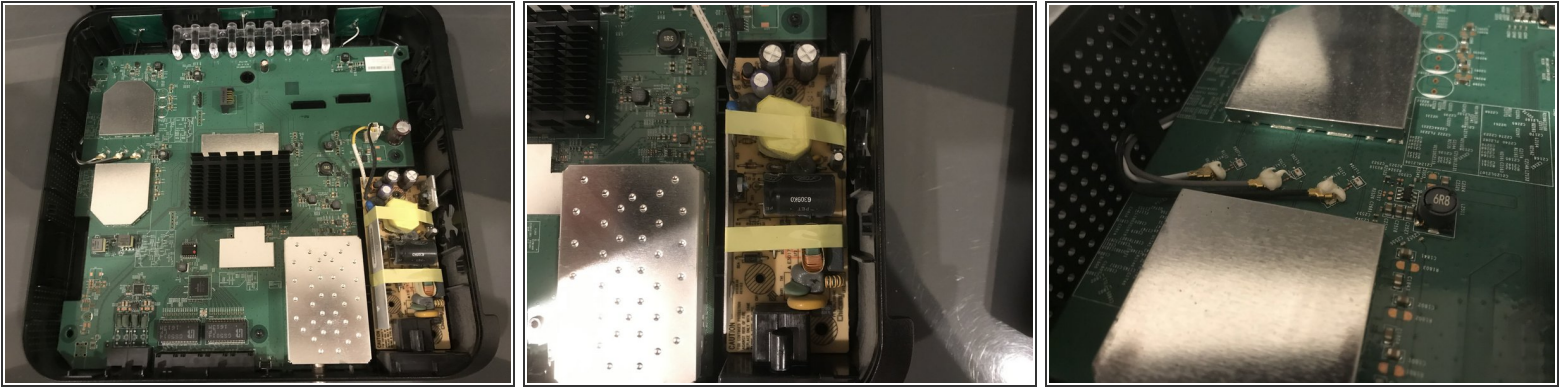
- The PSU comes out with one screw, and the power connector screw.
- It is the N12-035N1A Power Supply from Chicony Power.

Step 5



- Finally, removing the motherboard shows what it looks like on the back.

Step 6 — Conclusion



- In conclusion, this is one of the more repairable modem/router combos, especially since it's from an ISP.
- All the screws are the same, and while the T10 isn't user-friendly, it's easy to find online and in stores, and having a unified screw simplifies the repair process.
- The PSU is completely easily replaceable, but is unfortunately custom made for this model, and not found online.
- So while it's easy to open, it isn't easy to find replacement parts.
- Backups are also downloaded unencrypted, unfortunately, and with no way to update the firmware, it won't get fixed. The backups contain both your password, and the technician password (Username: technician / Password: C0nf1gur3Ubee#) inside the file.